



# Gypsy Violet

by Sheena Pike



Quilt size: 58" x 70" (1.47m x 1.78m)

Skill Level: Advanced Beginner

## The MultiVerse Quilt

Designed and sold by Leigh Headington - The Sweet Tea Girls Patterns

[www.thesweetteagirls.com](http://www.thesweetteagirls.com)

## The Multiverse Quilt Ordering Guide

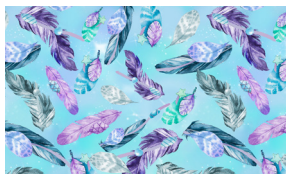
SKU	Yards	Meters	6 Kits	12 Kits
3652-50	1/4 yds	0.23m	1 bolt	1 bolt
3654-60	1/4 yds	0.23m	1 bolt	1 bolt
3655-11	1/2 yds	0.46m	1 bolt	1 bolt
3656-11	1/2 yds	0.46m	1 bolt	1 bolt
3657-55*	1 3/4 yds	1.60m	1 bolt	2 bolts
3661P-11	2/3 yds	0.61m	1 bolt	1 bolt
9570-76	5/8 yds	0.57m	1 bolt	1 bolt
1178-55	1 yd	0.91m	1 bolt	1 bolt
1178-75	1/2 yds	0.46m	1 bolt	1 bolt
<b>Backing Fabric Option</b>				
3658-01	4 yds	3.66m	2 bolts	4 bolts
* Indicates binding fabric. FQ = 18" x 22" (0.45m x 0.55m) All fabric quantities are based on 15yd bolts unless otherwise indicated.				



3652-50\*  
Feathers  
Lilac



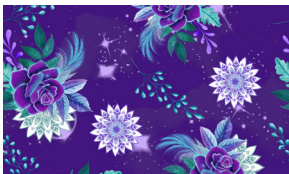
3654-60  
Leaves  
Mint



3655-11  
Tossed Feathers  
Lt. Blue



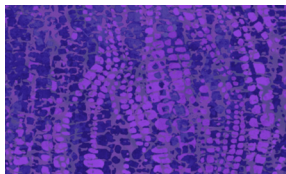
3656-11  
Flowers  
Lt. Blue



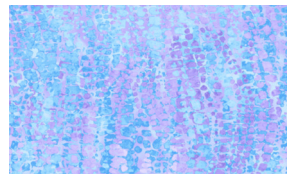
3657-55  
Flowers & Medallions  
Purple



9570-76  
Jot Dot  
Teal



1178-55  
Chameleon  
Purple



1178-75  
Chameleon  
Lt. Blue



3661P-11  
Horse Panel  
Lt. Blue