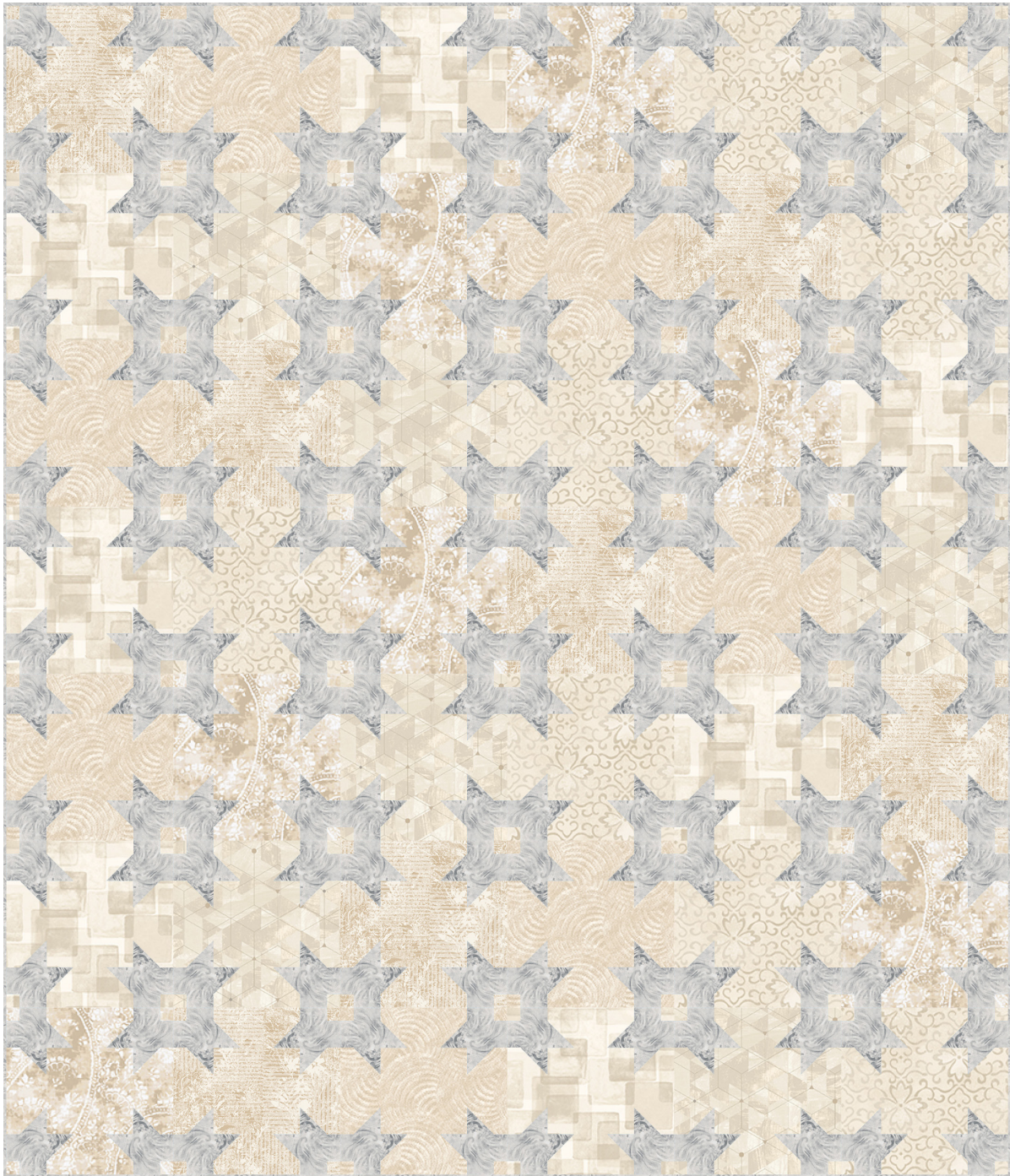




Purely Neutral

by Satin Moon Designs



Quilt size: 78 1/2" x 91 1/2" (1.99m x 2.32m)

Skill Level: Advanced Beginner

Farmer's Prairie Quilt - Ivory

Designed and sold by Farmer's Daughters Quilts

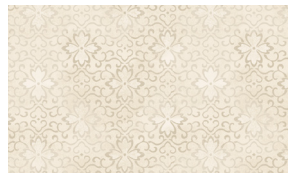
www.fdquilts.com

Farmer's Prairie Quilt - Ivory Ordering Guide

SKU		Yards	Meters	6 Kits	12 Kits
	3507-41	1 1/4 yds	1.14m	1 bolt	2 bolts
	3510-41	1 1/4 yds	1.14m	1 bolt	2 bolts
	3511-41	1 1/4 yds	1.14m	1 bolt	2 bolts
	3512-41	1 1/4 yds	1.14m	1 bolt	2 bolts
	3513-41	1 1/4 yds	1.14m	1 bolt	2 bolts
	3514-41	1 1/4 yds	1.14m	1 bolt	2 bolts
	3522-90*	3 1/2 yds	3.20m	2 bolts	3 bolts
Backing Fabric Option					
	3509-41	5 3/8 yds	4.91m	3 bolts	5 bolts
<p>* Indicates binding fabric. FQ = 18" x 22" (0.45m x 0.55m) All fabric quantities are based on 15yd bolts unless otherwise indicated.</p>					



3507-41
Abstract Geo with Leaves
Ivory



3510-41
Floral with Scroll
Ivory



3511-41
Paisley
Ivory



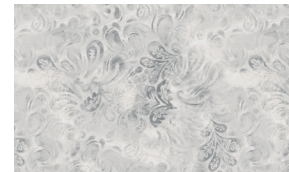
3512-41
Texture with Geo Linework
Ivory



3513-41
Circular Abstract
Ivory



3514-41
Textured Squares
Ivory



3522-90*
Abstract Paisley
Grey