



**Free Project
NOT FOR RESALE**

Western Boho

by Erica Billups



Way of Life Quilt

Designed by Denise Russell of Pieced Brain

Quilt size: 46" x 55"

Skill Level: Beginner

Blank Quilting Corporation

49 West 37th Street ♦ New York, NY 10018 - Tel: 800-294-9495 ♦ Fax: 212-679-4578

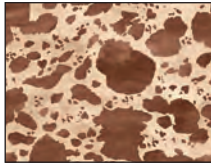
www.blankquilting.net

facebook

Western Boho - Fabrics in the Collection



3581-30 Western Toille
Tan



3582-32 Cow Hide
Sand



3583-32 Horse Heads
Sand



3584-90 Longhorns
Grey



3585-30 Cowboy Boots
Tan



3586-32 Cowboy
Hats - Sand



3587-01 Horses
White

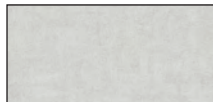


3588-90 Tossed
Cowboy Motifs - Grey



3589-30 Border Cowboy Stripe
Tan

Selected fabrics from the
Mélange Collection

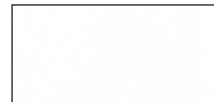


4509-105
Ice



4509-302
Dk. Gray

Selected fabric from the
Eclipse Solids Collection



3955 White

Way of Life Quilt

MATERIALS

Yardages and cutting instructions are based on 42" of usable fabric width.

1/3 yard 3581-30 Western Toile - Tan
 1/3 yard 3583-32 Horse Heads - Sand
 1/3 yard 3584-90 Longhorns - Grey
 1/3 yard 3585-30 Cowboy Boots - Tan
 1/3 yard 3586-32 Cowboy Hats - Sand
 1/3 yard 3587-01 Horses - White
 1/3 yard 3588-90 Tossed Cowboy Motifs - Grey
 1/3 yard 4509-105 Mélange - Ice
 5/8 yard 3589-30 Border Cowboy Stripe - Tan
 2/3 yard 3955 Eclipse Solids - White
 3/4 yard 4509-302 Mélange - Dk. Gray
 3 yards 3588-90 Tossed Cowboy Motifs - Grey for backing
 54" x 63" piece of batting

CUTTING

Note: All strips are cut across the width of the fabric (WOF) from selvage to selvage unless otherwise indicated.

From 3583-32 Horse Heads – Sand, cut:

*(1) 9 1/2" x WOF strip. Sub-cut (1) 9 1/2" square.

From each, cut:

3581-30 Western Toile – Tan

3584-90 Longhorns - Grey

3586-32 Cowboy Hats - Sand

3587-01 Horses – White

*(1) 9 1/2" x WOF strip. Sub-cut (2) 9 1/2" squares.

From each, cut:

3585-30 Cowboy Boots - Tan

3588-90 Tossed Cowboy Motifs – Grey

*(1) 9 1/2" x WOF strip. Sub-cut (3) 9 1/2" squares.

From 4509-105 Mélange – Ice, cut:

*(1) 3 1/2" x WOF strip. Sub-cut (8) 3 1/2" squares.

*(1) 4 1/4" x WOF strip. Sub-cut (8) 4 1/4" squares; cut twice diagonally. (Triangle A)

From 3589-30 Border Cowboy Stripe – Tan, cut:

*(6) 3 1/2" x WOF strips:

- Fussy cut 1 strip into (5) 3 1/2" squares.

- Set aside 5 strips for border 2.

From 3955 Eclipse Solids – White, cut:

*(1) 4 1/4" x WOF strip. Sub-cut (5) 4 1/4" squares; cut twice diagonally. (Triangle B)

*(10) 1 1/2" x WOF strips: 5 for border 1 and 5 for border 3.

From 4509-302 Mélange - Dk. Gray, cut:

*(1) 3 1/2" x WOF strip. Sub-cut (12) 3 1/2" squares.

*(1) 4 1/4" x WOF strip. Sub-cut (7) 4 1/4" squares; cut twice diagonally. (Triangle C)

*(6) 2 1/2" x WOF strips for the binding.

From 3588-90 Tossed Cowboy Motifs – Grey, cut:

*(2) 54" x WOF panels, pieced horizontally.

BLOCK ASSEMBLY

1. Sew a 4509-302 Mélange - Dk. Gray triangle C to a 4509-105 Mélange – Ice triangle A. Press the seam toward the lighter fabric. Sew a 3955 Eclipse Solids – White triangle B to another triangle A. Press the seam toward the darker fabric. Sew the two units together to make a 3 1/2" hourglass block (Figure 1). Repeat to make 12 units.

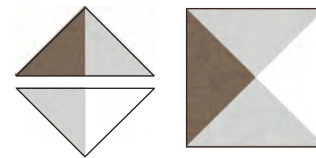


Figure 1 – Make (12) 3 1/2" units.

2. Sew a 4509-105 Mélange – Ice triangle A to a 4509-302 Mélange - Dk. Gray triangle C. Press the seam toward the darker fabric. Sew a 3955 Eclipse Solids – White triangle B to a 4509-302 Mélange - Dk. Gray triangle C. Press the seam toward the darker fabric. Sew the two units together to make a 3 1/2" hourglass block (Figure 2). Repeat to make 8 units.

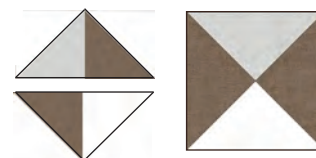


Figure 2 – Make (8) 3 1/2" units.

3. Gather the (12) 3 1/2" Mélange - Dk. Gray squares, (3) 3 1/2" 3589-30 Border Cowboy Stripe – Tan squares, and the Step 1 units. Arrange

Way of Life Quilt

and sew the units in 3 rows of 3 as shown. Press the seams in opposite directions in each row. Sew the rows together to complete (3) $9\frac{1}{2}$ " blocks (*Figure 3*). Press the seams in one direction.



Figure 3 – Make (3) $9\frac{1}{2}$ " blocks.

4. Repeat Step 3 with the (8) $3\frac{1}{2}$ " Mélange – Ice squares, the last (2) $3\frac{1}{2}$ " 3589-30 Border Cowboy Stripe – Tan squares, and the Step 2 units to make (2) $9\frac{1}{2}$ " blocks (*Figure 4*).



Figure 4 – Make (2) $9\frac{1}{2}$ " blocks.

QUILT ASSEMBLY

5. Referring to the quilt photograph for block and fabric placement, lay out 1 block and (3) $9\frac{1}{2}$ " squares in 5 rows. Notice how the blocks alternate from row to row. Join the blocks and squares together in each row. Press the seams in one direction.
6. For border 1, measure the vertical length of the quilt top through the center and trim (2) $1\frac{1}{2}$ " 3955 Eclipse Solids – White border strips

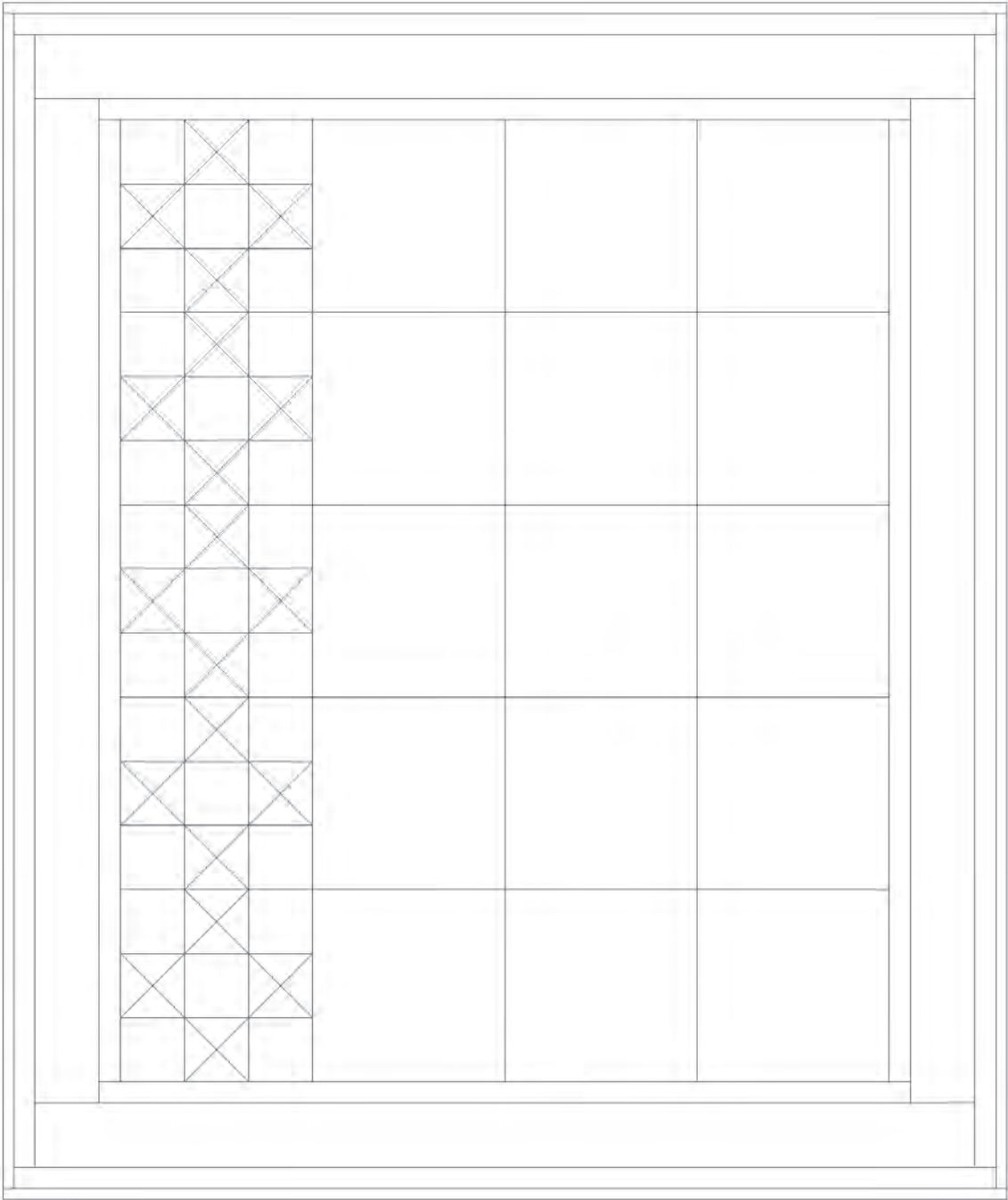
that length. Sew one strip to each side of the quilt top. Sew (3) $1\frac{1}{2}$ " White border strips together end to end using diagonal seams. Measure the width of the quilt top through the center. Cut two border strips that length and sew one to the top and one to the bottom. Press the seams toward the borders.

7. For border 2, sew (5) $3\frac{1}{2}$ " 3589-30 Border Cowboy Stripe – Tan border strips together end to end using diagonal seams. Measure the vertical length of the quilt top through the center and cut two border strips that length. Sew one strip to each side of the quilt top. Measure the width of the quilt top through the center. Cut two border strips that length and sew one to the top and one to the bottom. Press the seams toward the borders.
8. Repeat Step 7 with the remaining $1\frac{1}{2}$ " 3955 Eclipse Solids – White strips to make and add border 3.

FINISHING

9. Create a quilt sandwich with the batting between the quilt top and the backing. Pin or baste layers together, mark the quilting design, and quilt by hand or machine. When the quilting is complete, remove pins or basting, and trim batting and backing even with the raw edges of the quilt top.
10. Join the (6) $2\frac{1}{2}$ " 4509-302 Mélange - Dk. Gray binding strips together end to end using a diagonal seam to make one long strip. Trim seams to $\frac{1}{4}$ " and press them open. With wrong sides together, fold the strip in half lengthwise and press. Sew the binding to the edges of the quilt top, mitering corners and overlapping ends. Fold the binding to the back of the quilt and hand-stitch in place.

Way of Life Quilt



Quilt Diagram

©2024 Blank Quilting Corporation

Every effort has been made to ensure that all projects are error free. All the information is presented in good faith; however, no warranty can be given nor results guaranteed as we have no control over the execution of instructions. Therefore, we assume no responsibility for the use of this information or damages that may occur as a result. When errors are brought to our attention, we make every effort to correct and post a revision as soon as possible. Please make sure to check www.blankquilting.net for pattern updates prior to starting the project. We also recommend that you test the project prior to cutting for kits. Finally, all free projects are intended to remain free to you and are not for resale.