

Night Watch Quilt



Finished Size: **60" x 70" (1.52m x 1.78m)**

Finished Block Size: **10"**

Fabric Collection Name and Fabric Designer: **Winter Whispers by Elsie Ess**

Technique: **Piecing**

Designed by: **Denise Russell of Pieced Brain**

Skill Level: **Advanced Beginner**

Tech Edited by: **Lisa Visel, Mountain View Quilts**

Night Watch Quilt



Fabric Requirements

DESIGN	COLOR	ITEM ID	YARDAGE
(A) Winter Trees	White	4248-01	7/8 yard (0.80m)
(B) Winter Silhouettes	Teal	4249-75	3/4 yard (0.69m)
(C) Snowflakes	Lt. Blue	4250-70*	1 yard (0.91m)
(D) Leaves	Tan	4251-30	1/2 yard (0.46m)
(E) Winter Scenic	Lt. Blue	4252-70	1 yard (0.91m)
(F) Trees Trunks with Birds & Squirrels	Med. Blue	4253-72	1/2 yard (0.46m)
(G) Winter Blocks	Lt. Blue	4256P-70	1 1/3 yards (1.22m)
(H) Lower the Volume	White	1949-01	1 yard (0.91m)

* includes binding



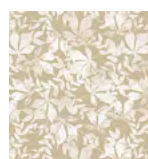
(A)



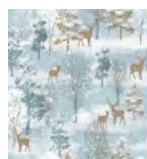
(B)



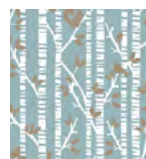
(C)



(D)



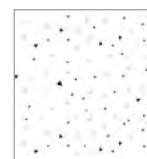
(E)



(F)



(G)



(H)

Backing (Purchased Separately)

44" (1.12m) wide

Snowflakes

Lt. Blue

4250-70

3 7/8 yards (3.54m)

OR

108" (2.74m) wide

2 yards (1.83m)



Backing
44"

Additional Materials:

- 100% cotton thread in colors to match
- Batting: 68" x 78" (172.7cm x 198.1cm)
- Thread and sewing supplies

All possible care has been taken to ensure the accuracy of this pattern. We are not responsible for printing errors or the manner in which individual work varies.

Please read the instructions carefully before starting this project. If kitting it is recommended a sample is made to confirm accuracy.

All free projects are intended to remain free and are not for resale.

Night Watch Quilt



Cutting

Notes:

- Please make sure to check www.blankquilting.net for pattern updates prior to starting the project.
- All strips are cut across the width of fabric (WOF) from selvage to selvage edge unless otherwise noted.

Fabric A, cut:

(3) 8½" x WOF; subcut
(10) 8½" squares

Fabric B, cut:

(1) 6½" x WOF; subcut
(6) 6½" squares
(1) 6" x WOF; subcut
(7) 6" squares
(5) 1½" x WOF for border 1

Fabric C, cut:

(7) 1½" x WOF for border 6
(7) 2½" x WOF for binding

Fabric D, cut:

(1) 6½" x WOF; subcut
(4) 6½" squares
(1) 6" x WOF; subcut
(5) 6" squares

Fabric E, cut:

(7) 4½" x WOF for border 5

Fabric F, cut:

(5) 2½" x WOF for border 3

Fabric G:

Fussy cut (10) 10½" blocks

Fabric H, cut:

(2) 6" x WOF; subcut
(12) 6" squares
(5) 1½" x WOF for border 2
(6) 1½" x WOF for border 4

All possible care has been taken to ensure the accuracy of this pattern. We are not responsible for printing errors or the manner in which individual work varies.

Please read the instructions carefully before starting this project. If kitting it is recommended a sample is made to confirm accuracy.

All free projects are intended to remain free and are not for resale.

Night Watch Quilt



Sewing

Notes:

- All seam allowances are $\frac{1}{4}$ " (0.64cm).
- Sew pieces with right sides together (RST).
- Press seam allowances open unless otherwise indicated.

Blocks 1 and 2

1. Draw a diagonal line twice on the reverse side of each 6" **Fabric H** square. Layer a marked **Fabric H** square on top of a 6" **Fabric D** square, RST. Sew on both sides of each line using a $\frac{1}{4}$ " seam allowance. Cut each set of sewn squares in half vertically and horizontally, then cut on the drawn lines. Press seam toward the darker fabric and trim each unit to $2\frac{1}{2}$ ". Repeat with remaining **Fabric H** and **Fabric D** squares, to make (36) $2\frac{1}{2}$ " half-square triangles (**Fig 1 and 1a**).
2. Repeat step with remaining 6" **Fabric H** squares and (7) 6" **Fabric B** squares to make (54) total $2\frac{1}{2}$ " half-square triangles (**Fig. 1b**).

Fig. 1

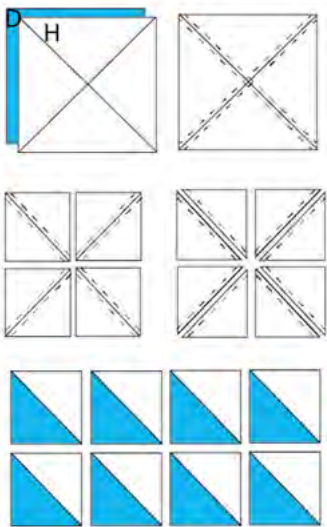


Fig. 1a

Make 36



Fig. 1b

Make 54



3. Gather the $8\frac{1}{2}$ " **Fabric A** squares and notice that the fabric is directional. Follow instructions precisely so the trees will face right side up in every block. Draw a diagonal line on the wrong side of $6\frac{1}{2}$ " **Fabric D** squares. With RST, place a marked **Fabric D** square on the top right corner of an $8\frac{1}{2}$ " **Fabric A** square and stitch on the drawn line. Trim the seam allowance to $\frac{1}{4}$ " and press toward the corner. Repeat to make (3) total $8\frac{1}{2}$ " units (**Fig. 2**).

Fig. 2

Make 3



All possible care has been taken to ensure the accuracy of this pattern. We are not responsible for printing errors or the manner in which individual work varies.

Please read the instructions carefully before starting this project. If kitting it is recommended a sample is made to confirm accuracy.

All free projects are intended to remain free and are not for resale.

Night Watch Quilt



4. Repeat step to sew a 6½" **Fabric D** square to the bottom left corner of an 8½" **Fabric A** square. Trim and press as before to make (1) 8½" unit (**Fig. 2a**).

Fig. 2a
Make 1



5. Repeat with the (6) 8½" **Fabric A** squares and (6) 6½" **Fabric B** squares. Make (2) total 8½" blocks with (4) with the B squares on the bottom left corner (**Figs. 2b - 2c**).

Fig. 2b
Make 2



Fig. 2c
Make 4



6. Gather step 1 **Fabric D** half-square triangle units. Noting fabric orientation, sew (4) half-square triangles in a row pressing the seams in one direction. Then, sew this row to the right side of a matching step 2 unit. Press the seam toward the center. Make (3) total units (**Fig. 3**). Repeat with last matching step 2 unit, sewing the row to the left side of unit (**Fig. 3a**).

Fig. 3
Make 3



Fig. 3a
Make 1



7. Noting fabric orientation, sew the remaining **Fabric D** half-square triangles in rows of (5) and press (**Fig. 4**). Sew rows to the top of (3) step 6 units (**Fig. 4a**) and to the bottom of (1) step 6 unit (**Fig. 4b**) to make (4) total 10½" blocks.

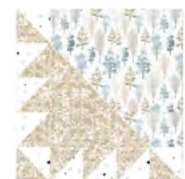
Fig. 4



Fig. 4a
Make 3



Fig. 4b
Make 1



8. Repeat steps 6 and 7 with **Fabric B** step 2 units to make (6) total 10½" blocks (**Figs. 5 - 5a**).

Fig. 5
Make 4



Fig. 5a
Make 2



All possible care has been taken to ensure the accuracy of this pattern. We are not responsible for printing errors or the manner in which individual work varies.

Please read the instructions carefully before starting this project. If kitting it is recommended a sample is made to confirm accuracy.

All free projects are intended to remain free and are not for resale.

Night Watch Quilt



Quilt Top Assembly

Follow the Quilt Layout Diagram (page 7) while assembling the quilt top.

9. Referring to the quilt photo for block placement and color orientation, lay out (5) rows of (4 alternating pieced and **Fabric G** blocks. Sew the blocks together in each row. Press the seams in opposite directions from row to row. Quilt center should measure 40½" x 50½".
10. For border 1, sew (5) 1½" **Fabric B** border strips together end to end using diagonal seams. Measure the vertical length of the quilt through the center and cut (2) border strips that length. Sew (1) strip to each side of the quilt and press the seams toward the borders. Measure the width of the quilt through the center. Cut (2) border strips that length and sew (1) to the top and (1) to the bottom. Press the seams toward the borders.
11. Repeat step 10 with (5) 1½" **Fabric H** strips to make and add border 2.
12. Repeat step 10 with (5) 2½" **Fabric F** strips to make and add border 3.
13. Repeat step 10 with (6) 1½" **Fabric H** strips to make and add border 4.
14. Repeat step 10 with (7) 4½" **Fabric E** strips to make and add border 5.
15. Repeat step 10 with (7) 1½" **Fabric C** strips to make and add border 6.

Finishing

16. Sew together the (7) 2½" **Fabric C** binding strips end to end using diagonal seams. Press the seams open. Press the binding strip in half with the wrong sides together.
17. Layer the backing (wrong side up), batting, and quilt top (right side up). Baste the layers together and quilt as desired. Trim excess batting and backing even with the top of the quilt.
18. Leaving an 8" tail of binding and beginning along an edge of the quilt top, matching the raw edges of the binding to the raw edges of the quilt. Sew the binding to the outside edge around all four sides and miter corners. Stop sewing approximately 12" from where you started and backstitch.
19. Lay both loose ends of the binding flat along the quilt edge. Where these two loose ends meet, fold them back onto themselves and press to form a crease. Using this crease as your stitching line, sew the two open ends of the binding together, with the right sides matching. Trim the seam to ¼" and press it open. Finish sewing the binding to the quilt.
20. Turn the binding over the raw edge to the back of the quilt and hand or machine stitch in place.

All possible care has been taken to ensure the accuracy of this pattern. We are not responsible for printing errors or the manner in which individual work varies.

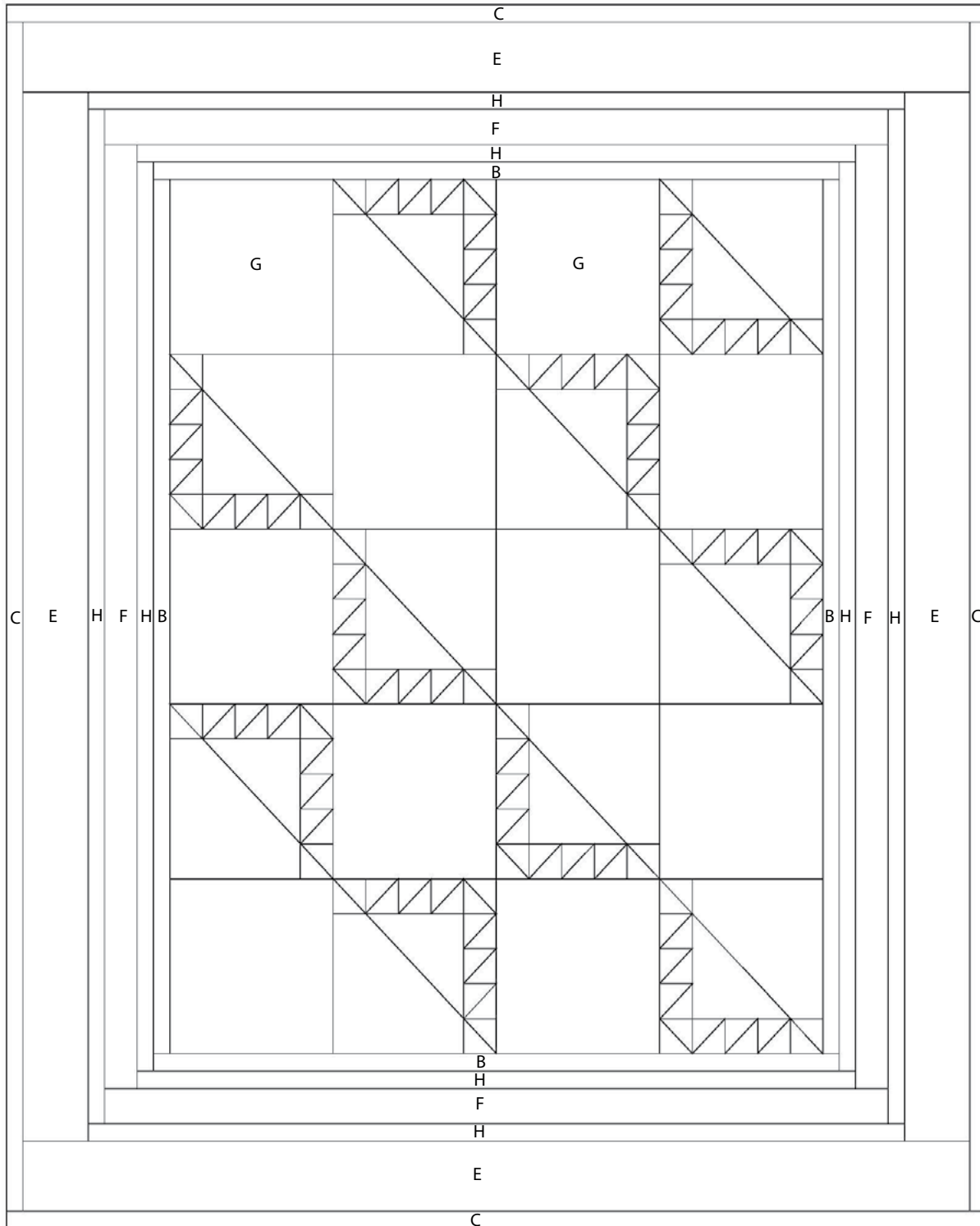
Please read the instructions carefully before starting this project. If kitting it is recommended a sample is made to confirm accuracy.

All free projects are intended to remain free and are not for resale.

Night Watch Quilt



Quilt Layout



All possible care has been taken to ensure the accuracy of this pattern. We are not responsible for printing errors or the manner in which individual work varies.

Please read the instructions carefully before starting this project. If kitting it is recommended a sample is made to confirm accuracy.

All free projects are intended to remain free and are not for resale.