

Nature's Canvas

by Virginia Eleonora











Quilt size: 60" x 72" (1.52m x 1.82m)

Skill Level: Intermediate

Ivy Twist Quilt

Designed by Annette Ornelas
www.southwindquilts.com

Ivy Twist Quilt Ordering Guide

SKU	Yards	Meters	6 Kits	12 Kits
 4996-35	1 3/4 yds	1.60m	1 bolt	2 bolts
 4997-57	1/3 yds	0.30m	1 bolt	1 bolt
 4998-35	1/3 yds	0.30m	1 bolt	1 bolt
 4999-58*	1 1/4 yds	1.14m	1 bolt	2 bolts
 5000-55	1/3 yds	0.30m	1 bolt	1 bolt
 5002-101	1/3 yds	0.30m	1 bolt	1 bolt
 5003-34	1/3 yds	0.30m	1 bolt	1 bolt
 4509-100	2 1/2 yds	2.29m	2 bolts	3 bolts
44" Backing Fabric Option				
5000-55	4 1/2 yds	4.11m	2 bolts	4 bolts

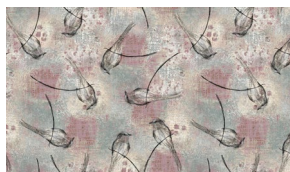
* Indicates binding fabric.

FQ = 18" x 22" (0.45m x 0.55m)

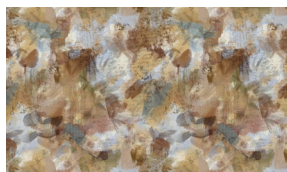
All fabric quantities are based on 15yd bolts unless otherwise indicated.



4996-35
Floral
Brown



4997-57
Sketched Birds Toss
Lt Plum



4998-35
Abstract Floral Texture
Brown



4999-58*
Floral With Words
Plum



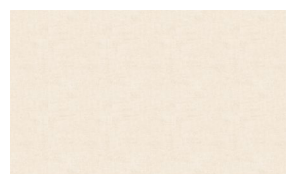
5000-55
Spaced Abstract Floral
Lt Plum



5002-101
Leaves And Writing
Multi



5003-34
Dots With Texture
Tan



4509-100
Melange Basic
Cream