



Quilt size: 49 1/2" x 66" (1.26m x 1.68m)

Skill Level: Advanced Beginner

Phyllis Quilt

Designed by Running Doe for Villa Rosa Designs
www.villarosadesigns.com

Phyllis Quilt Ordering Guide

| SKU | Yards | Meters | 6 Kits | 12 Kits |
|--|-----------|--------|--------|---------|
|  4924-44 | 1 yd | 0.91m | 1 bolt | 1 bolt |
|  4927-01 | 1 yd | 0.91m | 1 bolt | 1 bolt |
|  4928-77 | 1 1/2 yds | 1.37m | 1 bolt | 2 bolts |
|  4929-39* | 1/2 yds | 0.46m | 1 bolt | 1 bolt |
|  4933-77 | 1 yd | 0.91m | 1 bolt | 1 bolt |

44" Backing Fabric Option

| | | | | |
|---------|-----------|-------|---------|---------|
| 4932-44 | 4 1/8 yds | 3.77m | 2 bolts | 4 bolts |
|---------|-----------|-------|---------|---------|

108" Backing Fabric Option

| | | | | |
|---------|-----------|-------|--------|---------|
| 4734-40 | 1 5/8 yds | 1.49m | 1 bolt | 2 bolts |
|---------|-----------|-------|--------|---------|

* Indicates binding fabric.

FQ = 18" x 22" (0.45m x 0.55m)

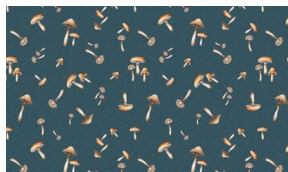
All fabric quantities are based on 15yd bolts unless otherwise indicated.



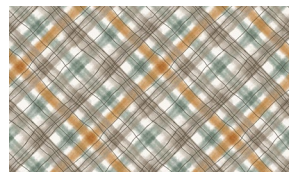
4924-44
Tossed Foxes
Cream



4927-01
Large Floral
Ecru



4928-77
Tossed Mushrooms
Navy



4929-39*
Plaid
Multi



4933-77
Woodland Animals
Navy