

Winter Solstice

by Bridgett Stahlman



Quilt size: 49 1/2" x 66" (1.26m x 1.68m)

Skill Level: Advanced Beginner

Phyllis Quilt

Designed by Running Doe for Villa Rosa
www.villarosadesigns.com

Phyllis Quilt Ordering Guide

| SKU | Yards | Meters | 6 Kits | 12 Kits |
|--|----------|--------|--------|---------|
|  4984-14 | 1 yd | 0.91m | 1 bolt | 1 bolt |
|  4987-46 | 1 yd | 0.91m | 1 bolt | 1 bolt |
|  4988-76* | 1/2 yd | 0.46m | 1 bolt | 1 bolt |
|  4990-76 | 1 yd | 0.91m | 1 bolt | 1 bolt |
|  4991-14 | 1 1/2 yd | 1.37m | 1 bolt | 2 bolts |

44" Backing Fabric Option

| | | | | |
|---------|-----------|-------|---------|---------|
| 4992-76 | 2 3/4 yds | 2.51m | 2 bolts | 3 bolts |
|---------|-----------|-------|---------|---------|

* Indicates binding fabric.

FQ = 18" x 22" (0.45m x 0.55m)

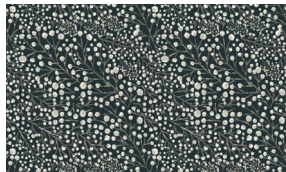
All fabric quantities are based on 15yd bolts unless otherwise indicated.



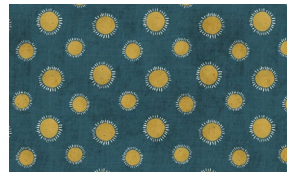
4984-14
Trees and Animals Allover
Cream



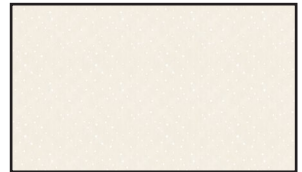
4987-46
Tiny Trees Toss
Gold



4988-76*
Frosted Berries
Dk Teal



4990-76
Suns Toss
Teal



4991-14
Snow Allover
Cream