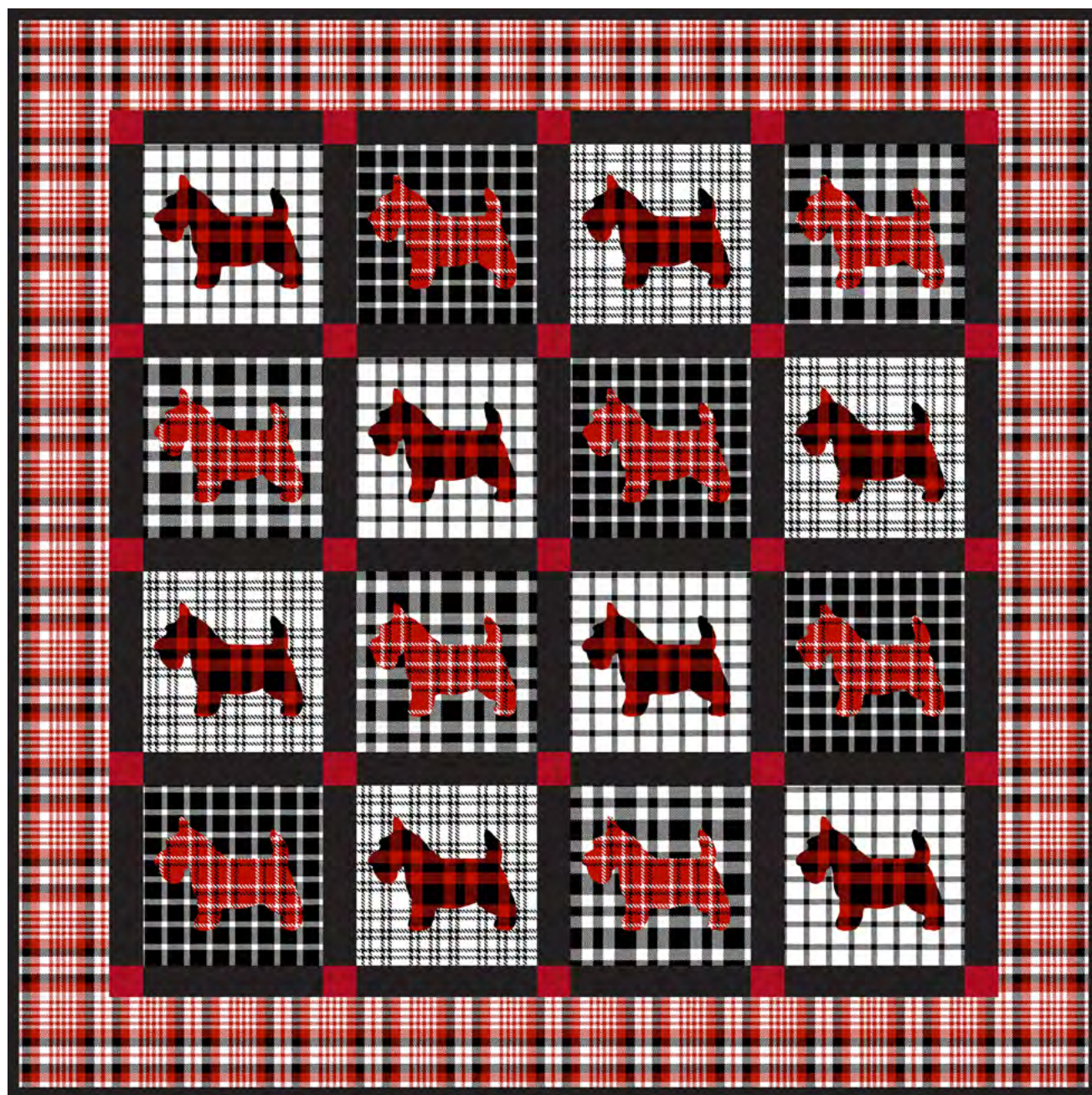


Scottie Plaid Throw



Finished Quilt Size: **47½" x 47½" (1.21m x 1.21m)**

Fabric Collection Name & Fabric Designer: **Plaid Essentials by Pattern Weave Studio**

Technique: **Pieced and Applique**

Designed by: **Lisa Swenson Ruble, Quilty Zest**

Skill Level: **Advanced Beginner**

Tech Edited by: **Julie Kentner**

Scottie Plaid Throw



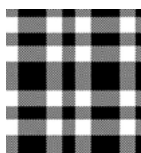
Fabric Requirements

DESIGN	COLOR	ITEM ID	YARDAGE
(A) Buffalo Check	Red	3963-88	½ yard (0.46m)
(B) Buffalo Check	Black	3963-99	¾ yard (0.34m)
(C) Shepherd Plaid	White	3964-19	¾ yard (0.34m)
(D) Shepherd Plaid	Black	3964-99	¾ yard (0.34m)
(E) Tartan Plaid	Red	3965-98	¾ yard (0.69m)
(F) Tattersall Plaid	White	3969-19	¾ yard (0.34m)
(G) Tattersall Plaid	Red	3970-88	½ yard (0.46m)
(H) Eclipse Solids	Jet Black	3955-JET BLACK*	1½ yards (1.03m)
(I) Melange Basic	Raspberry	4509-405	¼ yard (0.23m)

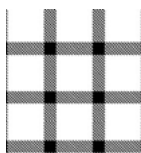
* includes binding



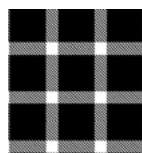
(A)



(B)



(C)



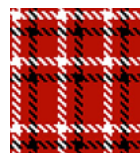
(D)



(E)



(F)



(G)



(H)



(I)

Backing (Purchased Separately)

44" (1.12m) wide

Buffalo Check

Black

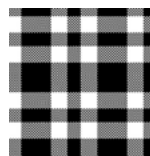
3963-99

3¾ yards (2.86m)

OR

108" (2.74m) wide

1½ yards (1.49m)



Backing
44"

Additional Materials:

- Paper backed fusible web
- 100% cotton thread in neutral or coordinating color
- 55" x 55" (1.40m x 1.40m) batting

All possible care has been taken to ensure the accuracy of this pattern. We are not responsible for printing errors or the manner in which individual work varies.

Please read the instructions carefully before starting this project. If kitting it is recommended a sample is made to confirm accuracy.

All free projects are intended to remain free and are not for resale.

Scottie Plaid Throw



Cutting

Notes:

- Please make sure to check www.blankquilting.net for pattern updates prior to starting the project.
- All strips are cut across the width of fabric (WOF) from selvage to selvage edge unless otherwise noted.

Fabric A, cut:

(8) Scottie Dogs (refer to Step 1 for applique preparation)

Fabric B, cut:

(1) 9" x WOF; subcut
(4) 9" squares

Fabric C, cut:

(1) 9" x WOF; subcut
(4) 9" squares

Fabric D, cut:

(1) 9" x WOF; subcut
(4) 9" squares

Fabric E, cut:

(3) 4½" x WOF; sew strips together end to end with 45-degree diagonal seams and cut
(2) 4½" x 48" strips
(2) 4½" x WOF; subcut
(2) 4½" x 40" strips

Fabric F, cut:

(1) 9" x WOF; subcut
(4) 9" squares

Fabric G, cut:

(8) Scottie Dogs (refer to Step 1 for applique preparation)

Fabric H, cut:

(10) 2" x WOF; subcut
(40) 2" x 8½" rectangles
(6) 2 ½" x WOF for the binding

Fabric I cut:

(2) 2" x WOF; subcut
(25) 2" squares

All possible care has been taken to ensure the accuracy of this pattern. We are not responsible for printing errors or the manner in which individual work varies.

Please read the instructions carefully before starting this project. If kitting it is recommended a sample is made to confirm accuracy.

All free projects are intended to remain free and are not for resale.

Scottie Plaid Throw

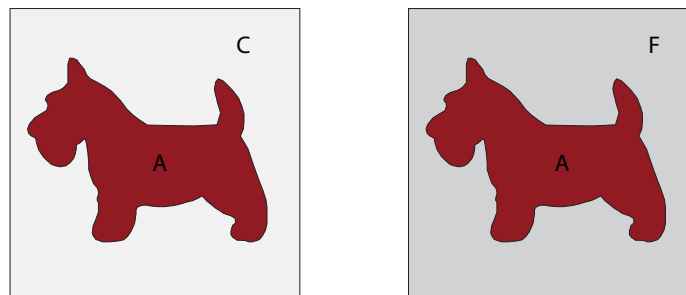


Block Assembly

Note:

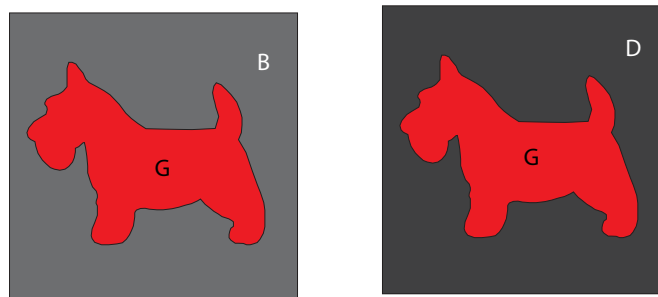
- All seam allowances are $\frac{1}{4}$ " (.64cm) unless otherwise noted.
 - Sew pieces right sides together.
 - Press seam allowances open unless otherwise indicated.
1. Trace (16) Scotty Dog shapes (page 7) onto the paper side of fusible web. Cut out each shape $\frac{1}{2}$ " past the drawn lines. Fuse (8) each Scotty Dogs onto the wrong side of **Fabric A** and **Fabric G**. Cut out each shape on the drawn line.
 2. Following manufacturer's directions, center and fuse (1) **Fabric A** Scotty Dog on (1) 9" **Fabric B** square. Use a decorative stitch to secure Scotty Dog in place. Square up block to measure $8\frac{1}{2}$ " square. Make a total of (4) each **A-C** and **A-F** Scotty Dog blocks (**Fig. 1**).

Fig. 1



3. In the same way, use **Fabric G** Scotty Dogs and 9" **Fabric B** and **Fabric D** squares to make a total of (4) each **G-B** and **G-D** Scotty Dog blocks (**Fig. 2**).

Fig. 2



All possible care has been taken to ensure the accuracy of this pattern. We are not responsible for printing errors or the manner in which individual work varies.

Please read the instructions carefully before starting this project. If kitting it is recommended a sample is made to confirm accuracy.

All free projects are intended to remain free and are not for resale.

Scottie Plaid Throw



Quilt Top Assembly

Follow the Quilt Layout Diagram (page 6) while assembling the quilt top.

4. Lay out one each **A-C**, **A-F**, **G-B** and **G-D** blocks alternating with (5) 2" x 8 ½" **Fabric H** rectangles and sew into a block row. Make (4) block rows.
5. Lay out (4) 2" x 8 ½" **Fabric H** rectangles alternating with (5) 2" **Fabric I** squares and sew into a sashing row. Make (5) sashing rows.
6. Sew the block rows and sashing rows together to make Quilt Center which will measure 40" x 40" square.
7. Sew (1) 4 ½" x 40" **Fabric E** strip to each side of the Quilt Center. Sew (1) 4 ½" x 48" **Fabric E** strip to the top and bottom of the Quilt Center to make the quilt top which measures 48" x 48" square.

Finishing

8. Sew together (6) 2 ½" x WOF **Fabric H** binding strips end to end using diagonal seams. Press the seams open. Press the binding strip in half wrong sides together. Set aside until the quilt is ready for binding.
9. Once the top is complete it is ready for quilting! Quilts can be sent out for longarm quilting or you can quilt it yourself. If you are sending the quilt out, it is important to discuss backing and batting requirements with the quilter to ensure they have everything needed to properly finish the quilt.
10. If quilting yourself and using 44" fabric for backing, choose your favorite method for piecing (taking time to remove selvages), then layer, baste and quilt. Once finished, trim excess batting and backing and bind according to your favorite method.
11. To complete binding by hand, it must first be machine sewn to the quilt top. Leaving an 8" tail of binding, sew binding to top of quilt through all layers, matching raw edges. Miter corners. Stop approximately 12" from where you started. Lay both loose ends of binding flat along quilt edge. Where the two loose ends meet, fold each side back on themselves and press to form a crease. Using this crease as your stitching line, sew the two open ends of the binding together right sides together. Trim seam to ¼" and press seam open. The binding will naturally fold, wrong sides together, and lay along the quilt edge. Finish sewing binding to quilt. Turn and press the binding to the back of the quilt and hand stitch in place.
12. If machine binding, complete the steps above only attach the binding to the BACK of the quilt, turn and press binding to the front of the quilt and machine stitch in place.

All possible care has been taken to ensure the accuracy of this pattern. We are not responsible for printing errors or the manner in which individual work varies.

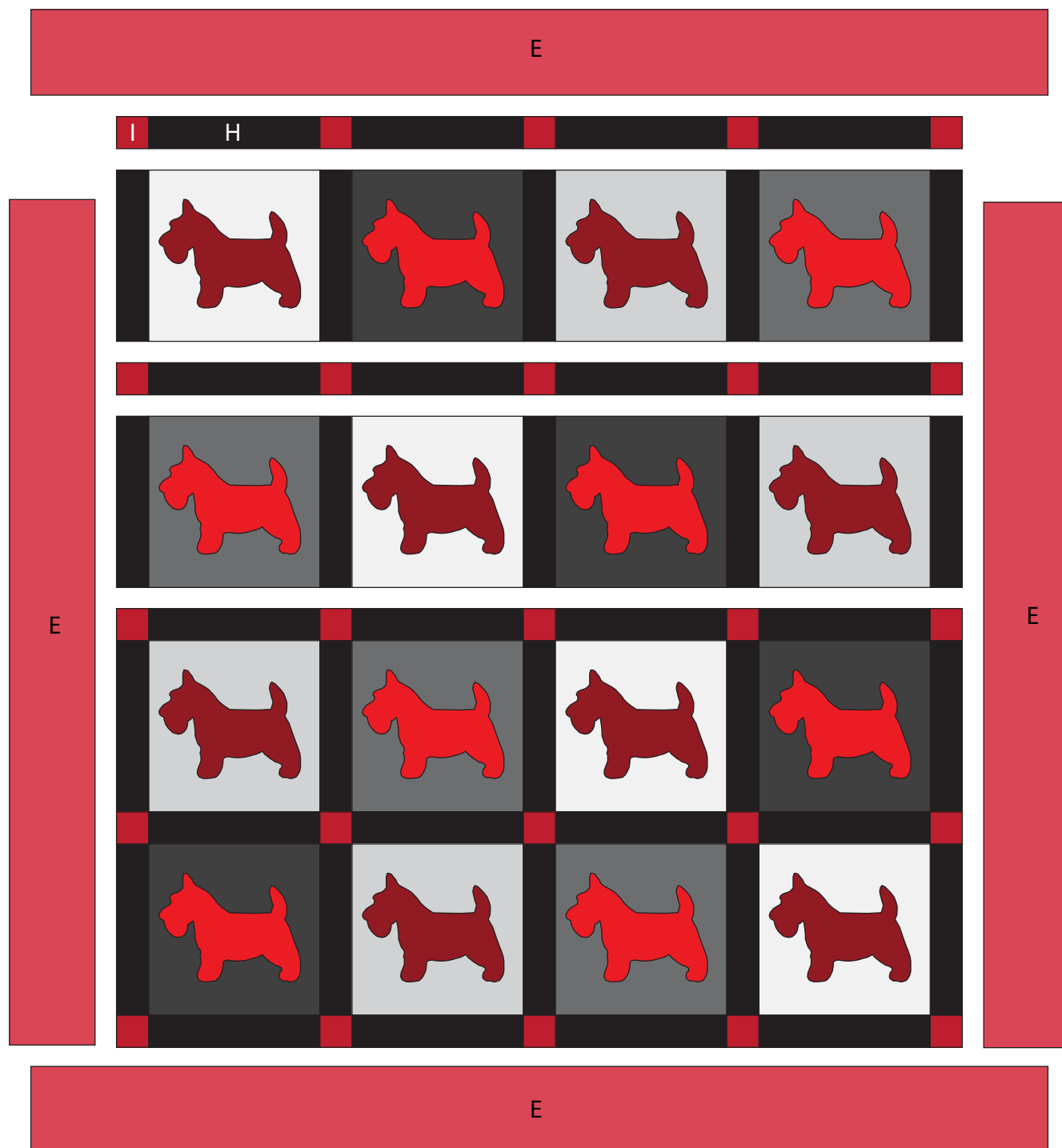
Please read the instructions carefully before starting this project. If kitting it is recommended a sample is made to confirm accuracy.

All free projects are intended to remain free and are not for resale.

Scottie Plaid Throw



Quilt Layout

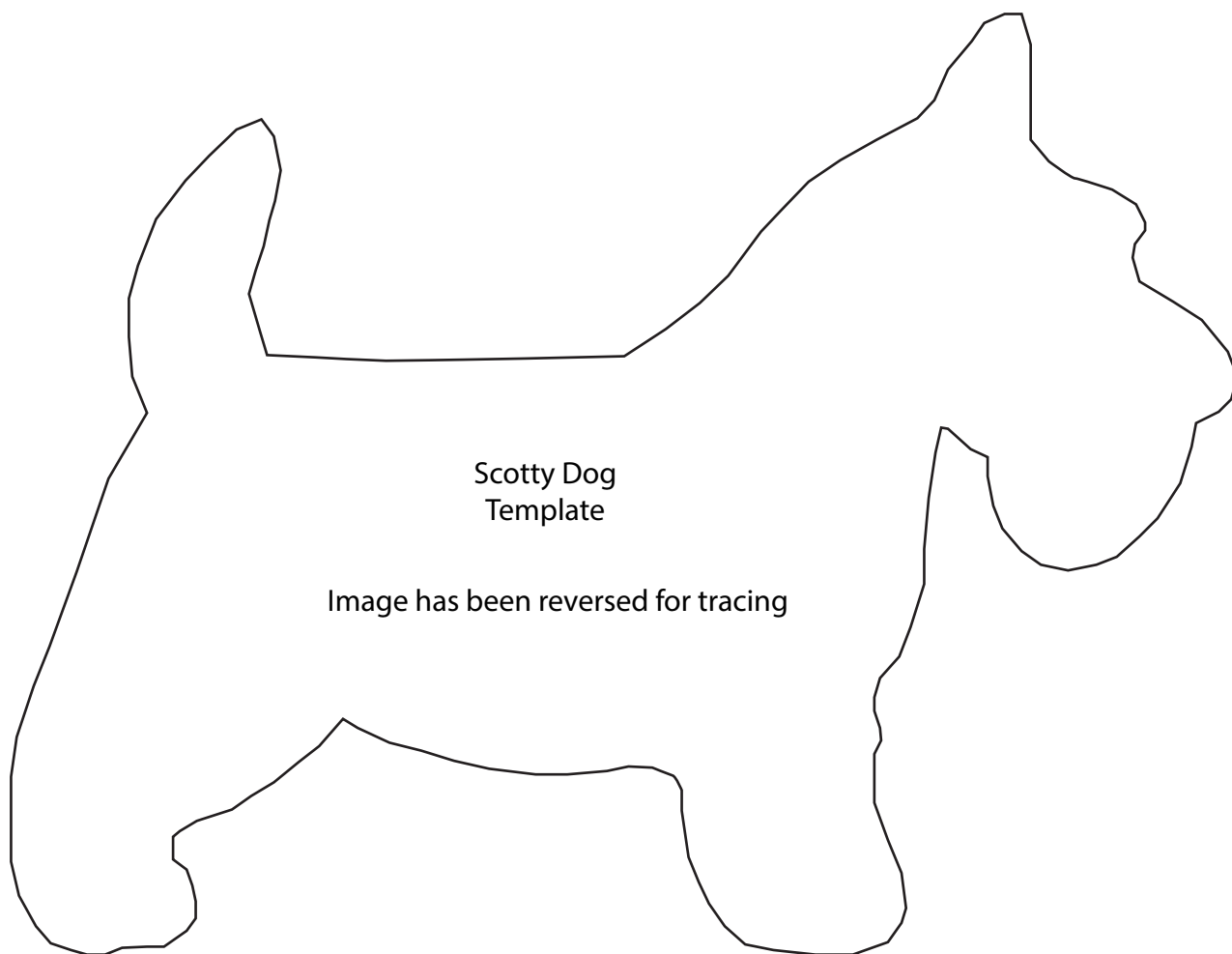


All possible care has been taken to ensure the accuracy of this pattern. We are not responsible for printing errors or the manner in which individual work varies.

Please read the instructions carefully before starting this project. If kitting it is recommended a sample is made to confirm accuracy.

All free projects are intended to remain free and are not for resale.

Scottie Plaid Throw



Scotty Dog
Template

Image has been reversed for tracing

This square should
measure 1" x 1"
(2.54cm x 2.54cm)
when printed.

*** Measure templates before cutting to confirm printing at 100%***

All possible care has been taken to ensure the accuracy of this pattern. We are not responsible for printing errors or the manner in which individual work varies.

Please read the instructions carefully before starting this project. If kitting it is recommended a sample is made to confirm accuracy.

All free projects are intended to remain free and are not for resale.