

**Q-2662**



Beginner

## Snow Crystals Wall hanger / Small quilt

41" X 53" (104 x 134 cm)

### FABRIC REQUIREMENT:

Fabrics from series „Snow Crystals”, 44" wide.

Danish Design 



### OTHER SUPPLIES:

Batting: Matilda's Own 99M300, 100% wool, 94" (240 cm) wide 45" (120 cm)

In addition: Matching sewing and quilting thread.  
Inch ruler.

CUTTING for border & binding:  
¼" seam allowance is included.

Fabric M:	2 Strips	3½" x 38" Border sides
Fabric M:	2 Strips	3½" x 13" Border sides
Fabric M:	2 Strips	3½" x 44" Border top/bottom
Fabric P:	5 Strips	2¾" x 44" Binding

**IMPORTANT INFO** before you start cutting & sewing.

This quilt has 12 different star blocks, 6 of the stars, the darkest blue ones are made as sawtooth stars with different center. And the other 6 stars, the light blue ones are made as Ohio stars with a twist at the star points.

Firstly you'll find a description of the sewing methods.  
And secondly each star is described, how it's cut and which methods to use, see page 4-6.  
On page 8 you'll find an enlarged image of each block.



A: 4593-100  
13" (35 cm)



B: 4593-101  
18" (50 cm)



C: 4593-104  
13" (35 cm)



D: 4593-105  
13" (35 cm)



E: 4593-106  
15" (40 cm)



F: 4593-107  
13" (35 cm)



G: 4593-108  
18" (50 cm)



H: 4593-600  
15" (40 cm)



I: 4593-601  
15" (40 cm)



J: 4593-605  
15" (40 cm)



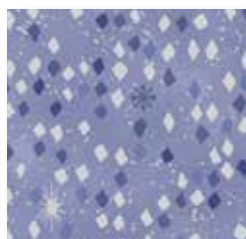
K: 4593-606  
10" (25 cm)



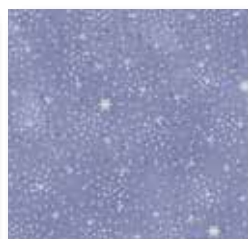
L: 4593-611  
14" (40 cm)



M: 4593-612  
38" (100 cm)



N: 4593-613  
8" (20 cm)



O: 4593-614  
8" (20 cm)



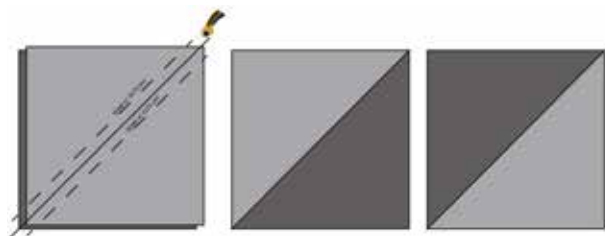
P: 4593-607  
20" (50 cm)

SEWING OF QUILT TOP: Seam allowance is 1/4".

**1st Method** is joining squares as half square triangles. Used in the center of some sawtooth stars.

Take two squares which must be joined.

On the lightest square draw a diagonal line from one corner to another.



Place them right sides together, sew on both sides of the drawn line. Cut at the drawn line and two squares come forward, see sketch.

Note: on some sawtooth stars there is a dark blue detail so few squares will be left.

Recut the squares to to 3½" x 3½".

**2nd Method** is joining flying geese for the star points for sawtooth stars.

The flying geese blocks are made from the no waste method.

Take one square  $7\frac{1}{2}" \times 7\frac{1}{2}"$  in dark blue fabric and four squares  $4\frac{1}{4}" \times 4\frac{1}{4}"$  in white fabric.

On each white square, draw a diagonal line from one corner to the other on the wrong side of the fabric.

Now take two white squares and place at two corners of the large blue square. Sew on each side of the drawn line. Cut at the line. Iron the seams.

Then place a white square on each piece and sew again on each side of the drawn line. Cut along the line and iron the seams.

You now have four Flying Geese blocks.

Attention: You now have to trim the rectangles to a size of  $6\frac{1}{2}" \times 3\frac{1}{2}"$ .

Note: If the star points are different white fabrics, start joining two similar squares on the big blue square. Next join the other similar squares. Then the star corners will be identical. See block 4, 8 & 12.

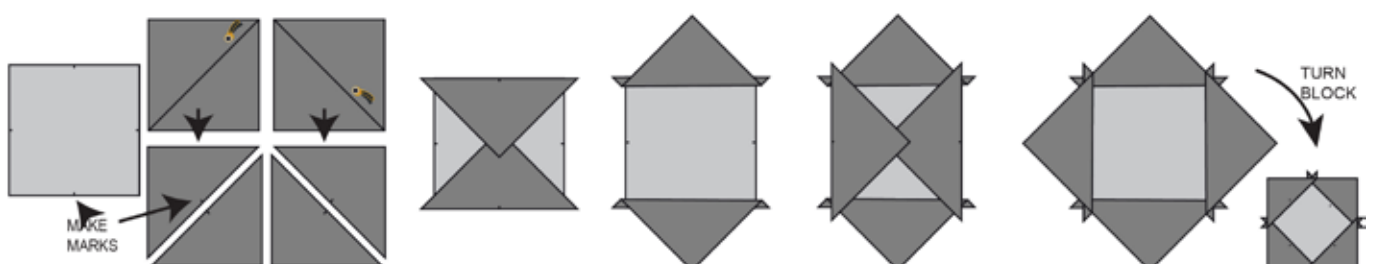
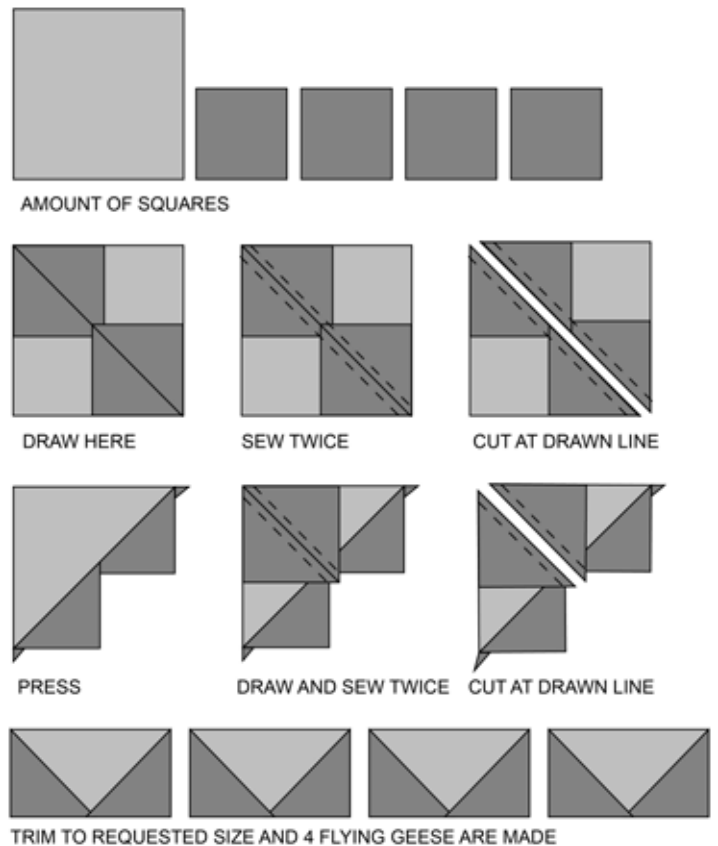
**3rd Method** is joining a square in a square for the center on two sawtooth stars.

Take a square  $4\frac{3}{4}" \times 4\frac{3}{4}"$  in white fabric and two (three, block 10) squares  $4" \times 4"$ . These last squares must be cut on diagonal.

Fold the triangles at the long line and make a mark. Also mark the center of each side of the squares in the middle. Place one triangle at the square and join. Join another triangle at the opposite side.

Turn back the triangle and place the next two triangles at the other sides and join. Turn back triangles.

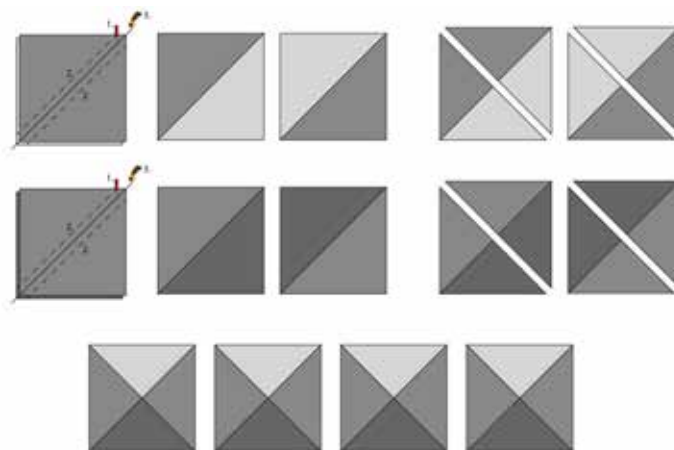
Now trim the square so the seam allowance will be  $\frac{1}{4}"$  at the corners of the square in square. The size must be  $6\frac{1}{2}" \times 6\frac{1}{2}"$ .



**4th Method** is joining the star points for the Ohio stars.

On three of the Ohio stars the star points are having 4 triangles in 3 different colours  
The triangles are made as quick triangle squares.

Take two squares 6" for the sides of the star point in light blue. And take two different squares 6", one in white for the back ground of the star and one in light blue towards the center of the Ohio star.



Place the squares two by two, having the similar light blue in each stack. Draw a diagonal line from one corner to the other on the wrong side of this fabric.

Sew on each side of the drawn line. Cut at the line. Iron the seams.

Cut on diagonal once more. Now switch the triangles so you can join four squares having three colours. See sketches. Now you have four blocks. Recut to  $4\frac{1}{2}" \times 4\frac{1}{2}"$ .

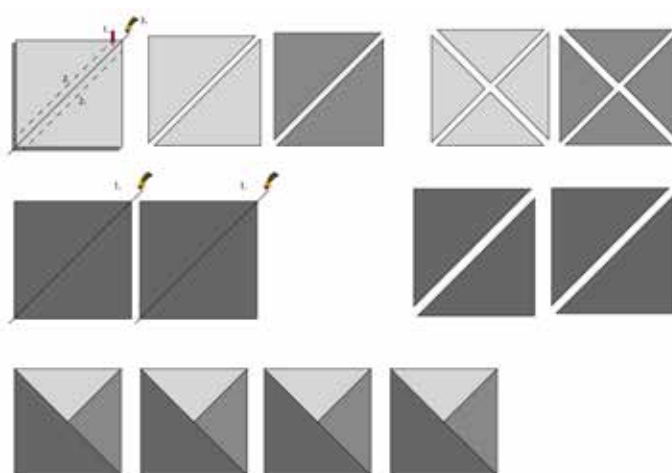
**5th Method** is also for joining the star points for the Ohio stars.

For some of the Ohio stars there is two small triangles and a big triangle.

In order to have identical placement of the triangles it's necessary to cut before sew, see below & sketches.

Here you take two squares 6", one in white & one in light blue. Cut on diagonal twice.

Next take the bigger square  $5\frac{1}{2}"$  and cut on diagonal, only once.



Now place the small triangles and the big triangles as sketch and join the small triangles first. Secondly join the big triangle. Do this four times so four blocks are made. Recut to  $4\frac{1}{2}" \times 4\frac{1}{2}"$ .

**CUTTING & SEWING** of each block: Seam allowance is  $\frac{1}{4}"$ .

**Block 1 - Use 4th method**

Fabric B: 4 Squares  $4\frac{1}{2}" \times 4\frac{1}{2}"$

Fabric D: 1 Square  $4\frac{1}{2}" \times 4\frac{1}{2}"$

Fabric L: 2 squares  $6" \times 6"$

Fabric B,N: each 1 square  $6" \times 6"$

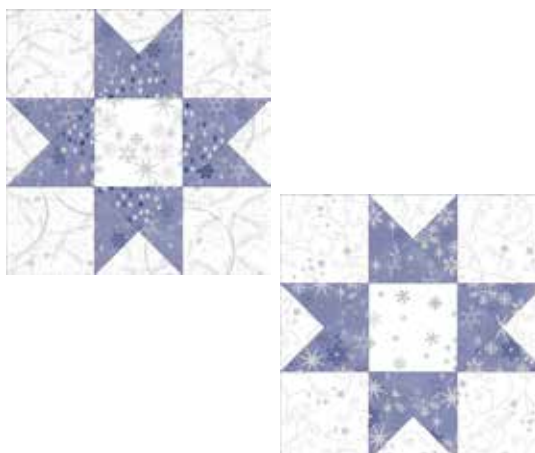
**Block 5 - Use 4th method**

Fabric G: 4 Squares  $4\frac{1}{2}" \times 4\frac{1}{2}"$

Fabric E: 1 Square  $4\frac{1}{2}" \times 4\frac{1}{2}"$

Fabric M: 2 squares  $6" \times 6"$

Fabric G,L: each 1 square  $6" \times 6"$





**Block 11 - Use 4th method**

Fabric B: 4 Squares  $4\frac{1}{2}" \times 4\frac{1}{2}"$   
Fabric A: 1 Square  $4\frac{1}{2}" \times 4\frac{1}{2}"$   
Fabric M: 2 squares  $6" \times 6"$   
Fabric B,O: each 1 square  $6" \times 6"$

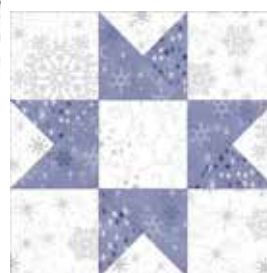


**Block 3 - Use 5th method**

Fabric C: 4 Squares  $4\frac{1}{2}" \times 4\frac{1}{2}"$   
Fabric A: 1 Square  $4\frac{1}{2}" \times 4\frac{1}{2}"$   
Fabric M: 2 squares  $5\frac{1}{2}" \times 5\frac{1}{2}"$   
Fabric C,O: each 1 square  $6" \times 6"$

**Block 7 - Use 5th method**

Fabric C: 4 Squares  $4\frac{1}{2}" \times 4\frac{1}{2}"$   
Fabric D: 1 Square  $4\frac{1}{2}" \times 4\frac{1}{2}"$   
Fabric N: 2 squares  $5\frac{1}{2}" \times 5\frac{1}{2}"$   
Fabric C,L: each 1 square  $6" \times 6"$



**Block 9 - Use 5th method**

Fabric A: 4 Squares  $4\frac{1}{2}" \times 4\frac{1}{2}"$   
Fabric G: 1 Square  $4\frac{1}{2}" \times 4\frac{1}{2}"$   
Fabric L: 2 squares  $5\frac{1}{2}" \times 5\frac{1}{2}"$   
Fabric A,N: each 1 square  $6" \times 6"$

**Block 2 - Use 3rd & 2nd method**

Fabric B: 1 Square  $4\frac{3}{4}" \times 4\frac{3}{4}"$   
Fabric J: 2 Squares  $4" \times 4"$   
Fabric H: 4 squares  $3\frac{1}{2}" \times 3\frac{1}{2}"$   
Fabric H: 1 square  $7\frac{1}{2}" \times 7\frac{1}{2}"$   
Fabric E: 4 squares  $4\frac{1}{4}" \times 4\frac{1}{4}"$



**Block 10 - Use 3rd & 2nd method**

Fabric D: 1 Square  $4\frac{3}{4}" \times 4\frac{3}{4}"$   
Fabric F: 2 Squares  $4" \times 4"$  (one left)  
Fabric J: 1 Square  $4" \times 4"$  (one left)  
Fabric H: 4 squares  $3\frac{1}{2}" \times 3\frac{1}{2}"$   
Fabric H: 1 square  $7\frac{1}{2}" \times 7\frac{1}{2}"$   
Fabric G: 4 squares  $4\frac{1}{4}" \times 4\frac{1}{4}"$



**Block 4 - Use 1st & 2nd method**

Fabric B,E: each 2 Squares  $4\frac{1}{2}" \times 4\frac{1}{2}"$   
Fabric F,I: each 1 Square  $4\frac{1}{2}" \times 4\frac{1}{2}"$   
Fabric J: 4 squares  $3\frac{1}{2}" \times 3\frac{1}{2}"$   
Fabric J: 1 square  $7\frac{1}{2}" \times 7\frac{1}{2}"$   
Fabric B,F: each 2 squares  $4\frac{1}{4}" \times 4\frac{1}{4}"$



(one left)  
(one left)

**Block 8 - Use 1st & 2nd method**

Fabric D,G: each 2 Squares  $4\frac{1}{2}" \times 4\frac{1}{2}"$  (one left)  
Fabric F,J: each 1 Square  $4\frac{1}{2}" \times 4\frac{1}{2}"$  (one left)  
Fabric I: 4 squares  $3\frac{1}{2}" \times 3\frac{1}{2}"$   
Fabric I: 1 square  $7\frac{1}{2}" \times 7\frac{1}{2}"$   
Fabric D,G: each 2 squares  $4\frac{1}{4}" \times 4\frac{1}{4}"$



Block 12 - Use 1st & 2nd method

Fabric B,E: each 2 Squares  $4\frac{1}{2}" \times 4\frac{1}{2}"$

Fabric F,H: each 1 Square  $4\frac{1}{2}" \times 4\frac{1}{2}"$

Fabric K: 4 squares  $3\frac{1}{2}" \times 3\frac{1}{2}"$

Fabric K: 1 square  $7\frac{1}{2}" \times 7\frac{1}{2}"$

Fabric B,E: each 2 squares  $4\frac{1}{4}" \times 4\frac{1}{4}"$



(one left)

(one left)

Block - join nine patch & use 2nd method

Fabric E,F: each 4 Squares  $2\frac{1}{2}" \times 2\frac{1}{2}"$

Fabric K: 1 Square  $2\frac{1}{2}" \times 2\frac{1}{2}"$

Fabric I: 4 squares  $3\frac{1}{2}" \times 3\frac{1}{2}"$

Fabric I: 1 square  $7\frac{1}{2}" \times 7\frac{1}{2}"$

Fabric A: 4 squares  $4\frac{1}{4}" \times 4\frac{1}{4}"$



Note: The size of each block is  $12\frac{1}{2}" \times 12\frac{1}{2}"$  (before sew).

Position the blocks as layout on page 7.

Join the blocks into rows and afterwards join the rows.

The quilt center is now created.

Now take the strips for the side of the border in fabric M and join at the short ends. Join them to each side of the quilt center (M1), having the seam at a seam between the rows. Trim strips at each end.

Next take the strips for the top & bottom of the border. Join them (M2).

The quilt top is now finished.

#### QUILTING AND BINDING:

Layer top, batting and backing fabric and baste the pieces.

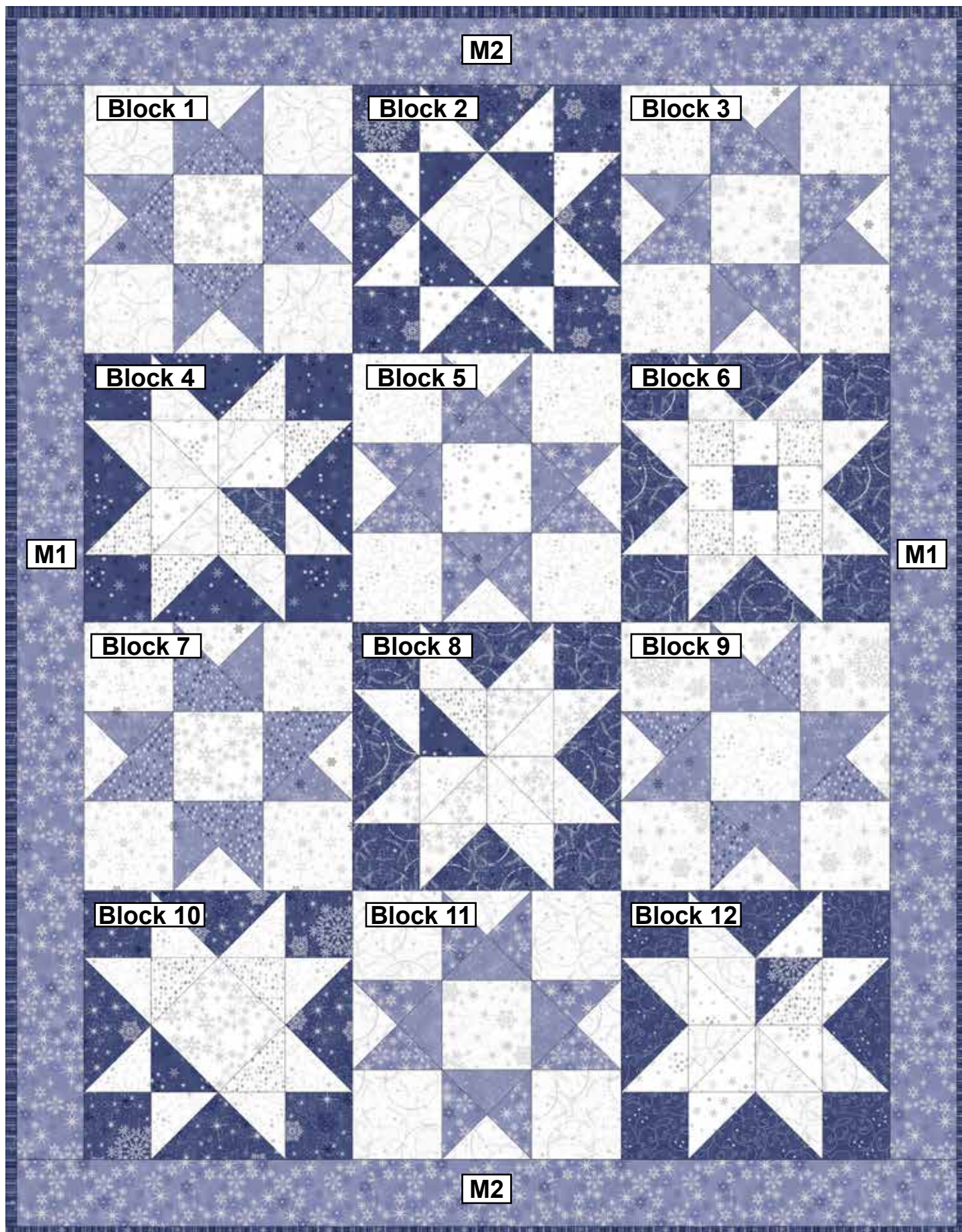
Quilt as you prefer by hand or by machine.

Sew hanging sleeve in backing fabric and place under top binding in fabric P.

We wish you much success and pleasure with our fabrics and pattern.

Your Team from stoffabrics.





Binding is fabric P



