

North Pole DIY Quilt



Finished Size of Project: **63½" x 77" (1.61m x 1.96m)**

Fabric Collection Name and Designer: **Gears & Garland by Urban Essence Designs**

Technique: **Pieced**

Project Designed by: **Denise Russell of Pieced Brain**

Skill Level: **Advanced Beginner**

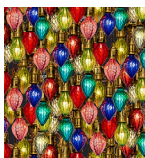
North Pole DIY Quilt

Fabric Requirements

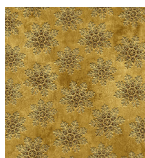
DESIGN	COLOR	ITEM ID	YARDAGE
(A) Steampunk Christmas Bulbs	Blue	4819-77	½ yard (0.46m)
(B) Snowflakes	Gold	4824-30	½ yard (0.46m)
(C) Steampunk Candy Canes	Green	4825-66	½ yard (0.46m)
(D) Steampunk Poinsettias	Red	4826-88	1⅛ yards (1.03m)
(E) Steampunk Christmas Trees	Red	4829-88	½ yard (0.46m)
(F) Steampunk Christmas Blocks	Black	4830B-99	1⅓ yards (1.22m)
(G) Mélange	Green	4509-807*	1⅓ yards (1.22m)
(H) Jot Dot	Ivory	9570-41	2⅞ yards (2.63m)

* includes binding

Backing (Purchased Separately)



(A)



(B)



(C)



(D)



(E)



(F)



(G)



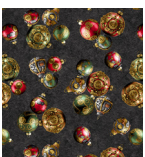
(H)

44" (1.12m) wide

Steampunk Christmas Ornaments Black 4823-99 4¾ yards (4.34m)

OR

108" (2.74m) wide 2 yards (1.83m)



Backing
44"

Additional Materials:

- Batting 72" x 85"
- Thread and sewing supplies

All possible care has been taken to ensure the accuracy of this pattern. We are not responsible for printing errors or the manner in which individual work varies.

Please read the instructions carefully before starting this project. If kitting it is recommended a sample is made to confirm accuracy.

All free projects are intended to remain free and are not for resale.

Cutting Instructions

Notes:

- Please make sure to check *blankquilting.net* for pattern updates prior to starting the project.
- All strips are cut across the width of fabric (WOF) from selvedge to selvedge edge unless otherwise noted.

Fabrics A, B, and C, cut:

(3) 3½" x WOF; subcut (30) 3½" squares

Fabric D, cut:

(7) 4½" x WOF for border 2

Fabric E, cut:

(3) 3½" x WOF; subcut:

(30) 3½" squares

(1) 2" x WOF; subcut

(12) 2" cornerstone squares

Fabric F:

Trim panels into (10) squares approximately ¼" past the gold trim border of each block.

Note: size is flexible and will be trimmed to fit in step 1.

Fabric G, cut:

(1) 13½" x WOF; subcut (20) 2" x 13½" rectangles

(1) 11½" x WOF; subcut (20) 2" x 11½" rectangles

(8) 2½" x WOF for binding

Fabric H, cut:

(2) 12½" x WOF; subcut (31) 2" x 12½" sashing rectangles

(6) 6½" x WOF; subcut:

(10) 6½" squares

(40) 3½" x 6½" rectangles

(4) 3½" x WOF; subcut (40) 3½" squares

(7) 2" x WOF for border 1

All possible care has been taken to ensure the accuracy of this pattern. We are not responsible for printing errors or the manner in which individual work varies.

Please read the instructions carefully before starting this project. If kitting it is recommended a sample is made to confirm accuracy.

All free projects are intended to remain free and are not for resale.

North Pole DIY Quilt

SEWING

Note: All seam allowances are $\frac{1}{4}$ " (0.64cm). Sew pieces with right sides together. Press seam allowances open unless otherwise indicated.

1. Sew a 2" x 11½" **Fabric G** rectangle to either side of a **Fabric F** square. Press the seams away from the center. Sew a 2" x 13½" **Fabric G** rectangle to the top and bottom. Press as before. Trim to 12½" centering block. Repeat to make (10) 12½" blocks (**Fig. 1**).



Fig. 1

2. Draw a diagonal line on the wrong side of (1) 3½" square each of **Fabrics A, B, C,** and **E.** With right sides together, place a marked **Fabric A** square on a corner of a 6½" **Fabric H** square and stitch on the drawn line. Sew a marked **Fabric E** square to the opposite corner of the same square. Trim the seam allowances to $\frac{1}{4}$ ", flip open, and press. Similarly, sew a marked **Fabric B** square to the adjacent corner of the **Fabric A**, and the **Fabric C** square to the remaining corner. Trim and press as before. Repeat to make (10) 6½" units (**Fig. 2**).

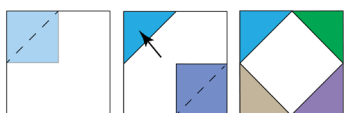
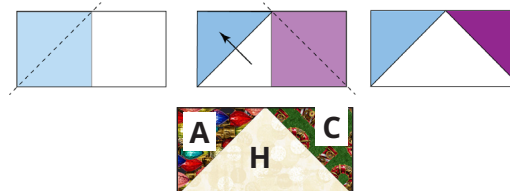


Fig. 2

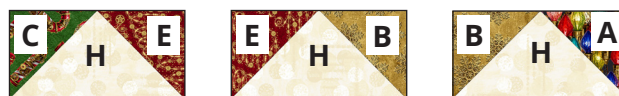
3. Mark (1) 3½" square each of **Fabric A** and **Fabric C** as in step 2. Noting the stitching line direction and with right sides together, layer a marked **Fabric A** square on the left short end of a 3½" x 6½" **Fabric H** rectangle, and stitch on the drawn line. Trim the seam allowance to $\frac{1}{4}$ ", flip open, and press. Similarly, stitch a **Fabric C** square to the opposite end of the same rectangle. Repeat to make (10) 3½" x 6½" AC flying-geese units (**Fig. 3**).



AC unit

Fig. 3

4. Noting fabric placement as shown below, repeat step 3 with (10) 3½" squares each of **Fabrics C** and **E** squares (make 10 CE units), the 3½" squares of **Fabrics E** and **B** (make 10 EB units), and (10) 3½" squares each of **Fabrics B** and **A** to make 10 BA units (**Fig. 4**).



CE unit

EB unit

BA unit

Fig. 4

All possible care has been taken to ensure the accuracy of this pattern. We are not responsible for printing errors or the manner in which individual work varies.

Please read the instructions carefully before starting this project. If kitting it is recommended a sample is made to confirm accuracy.

All free projects are intended to remain free and are not for resale.

- Gather the 3½" **Fabric H** squares and the steps 2-4 units. Arrange them in 3 rows of 3, as shown. Sew the rows together, press the seams in opposite directions, then sew the rows together to form (10) 12½" blocks. Press the seams open (**Fig. 5**).

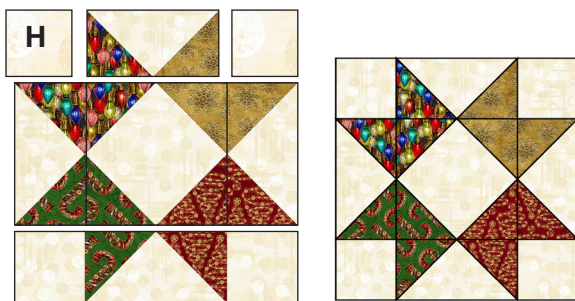


Fig. 5

QUILT TOP ASSEMBLY

Note: Follow the Quilt Layout Diagram (page 6) while assembling the quilt top.

- Lay out (5) rows of (4) alternating blocks and (3) 2" x 12½" **Fabric H** sashing rectangles, rotating the pieced star blocks as shown in the Quilt Layout Diagram. Sew the blocks and sashing rectangles together in each row. Press the seams toward the sashing.
- To make the horizontal sashing rows, sew together (4) 2" x 12½" **Fabric H** sashing rectangles and (3) 2" **Fabric E** cornerstone squares. Repeat to make 4 sashing strips. Press the seams toward the sashing.
- Nest the adjacent seams and sew the block and horizontal sashing rows together. Press the seams in one direction.
- For border 1, sew the (7) 2" **Fabric H** strips together end to end using diagonal seams. Measure the vertical length of the quilt top through the center and cut two border strips to that length. Sew one strip to each side of the quilt top and press the seams toward the borders. Measure the width of the quilt top through the center. Cut two border strips to that length and sew one to the top and one to the bottom. Press the seams toward the borders.
- Sew the (7) 4½" **Fabric D** strips together end to end using straight seams. Measure, cut and add border 2 in the same manner as border 1.

FINISHING

- Sew together the (8) 2½" **Fabric G** binding strips end to end using diagonal seams. Press the seams open. Press the binding strip in half with the wrong sides together.
- Layer the backing (wrong side up), batting, and quilt top (right side up). Baste the layers together and quilt as desired. Trim excess batting and backing even with the top of the quilt.
- Leaving an 8" tail of binding and beginning along an edge of the quilt top, match the raw edges of the binding to the raw edges of the quilt. Sew the binding to the outside edge around all four sides and miter corners. Stop sewing approximately 12" from where you started and backstitch.
- Lay both loose ends of the binding flat along the quilt edge. Where these two loose ends meet, fold them back onto themselves and press to form a crease. Using this crease as your stitching line, sew the two open ends of the binding together, with the right sides matching. Trim the seam to ¼" and press it open. Finish sewing the binding to the quilt.
- Turn the binding over the raw edge to the back of the quilt and hand or machine stitch in place.

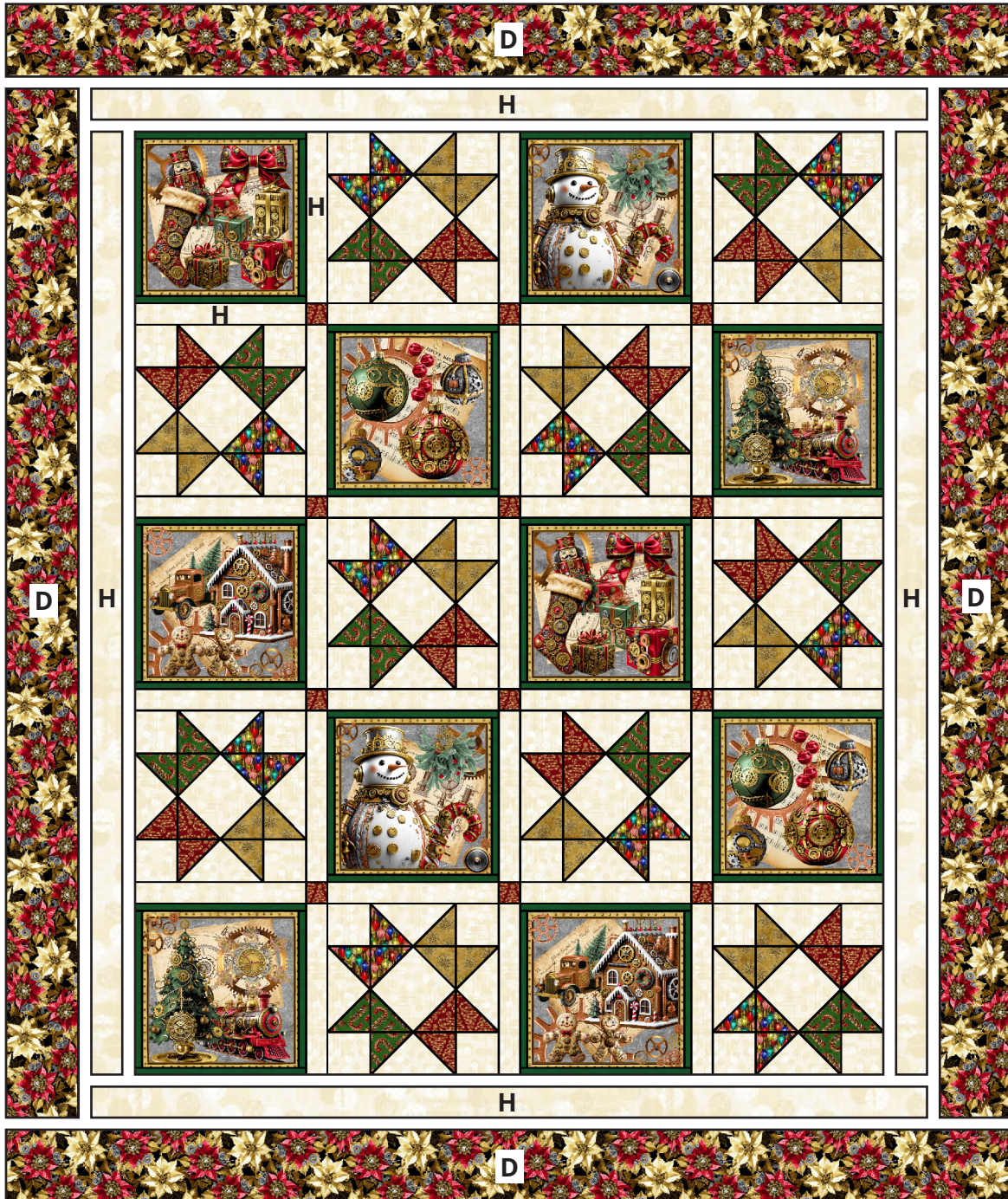
All possible care has been taken to ensure the accuracy of this pattern. We are not responsible for printing errors or the manner in which individual work varies.

Please read the instructions carefully before starting this project. If kitting it is recommended a sample is made to confirm accuracy.

All free projects are intended to remain free and are not for resale.

North Pole DIY Quilt

Quilt Layout



All possible care has been taken to ensure the accuracy of this pattern. We are not responsible for printing errors or the manner in which individual work varies. Please read the instructions carefully before starting this project. If kitting it is recommended a sample is made to confirm accuracy.

All free projects are intended to remain free and are not for resale.