

Skill Level: Beginner

Designed by Denise Russell of Pieced Brain
www.blankquilting.net

Watchful Eyes Quilt Ordering Guide

| SKU | Yards | Meters | 6 Kits | 12 Kits |
|--|-----------|--------|--------|---------|
|  4806-97 | 1 1/2 yds | 1.37m | 1 bolt | 2 bolts |
|  4809-66 | 1/2 yds | 0.46m | 1 bolt | 1 bolt |
|  4810-41 | 1/2 yds | 0.46m | 1 bolt | 1 bolt |
|  4812-39 | 1/4 yds | 0.23m | 1 bolt | 1 bolt |
|  4814-97 | 1 1/8 yds | 1.03m | 1 bolt | 1 bolt |
|  4815B-99 (10yd bolt) | 1 yd | 0.91m | 1 bolt | 2 bolts |
| 4509-304* | 7/8 yds | 0.80m | 1 bolt | 1 bolt |

Backing Fabric Option

| | | | | |
|---------|-----------|-------|---------|---------|
| 4812-39 | 3 7/8 yds | 3.54m | 2 bolts | 4 bolts |
|---------|-----------|-------|---------|---------|

* Indicates binding fabric.

FQ = 18" x 22" (0.45m x 0.55m)

All fabric quantities are based on 15yd bolts unless otherwise indicated.



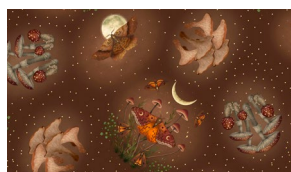
4806-97
Mushrooms and Ghosts
Charcoal



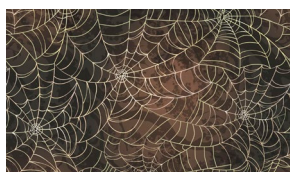
4809-66
Moths
Green



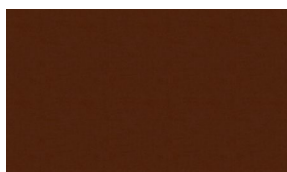
4810-41
Tossed Fall Leaves
Cream



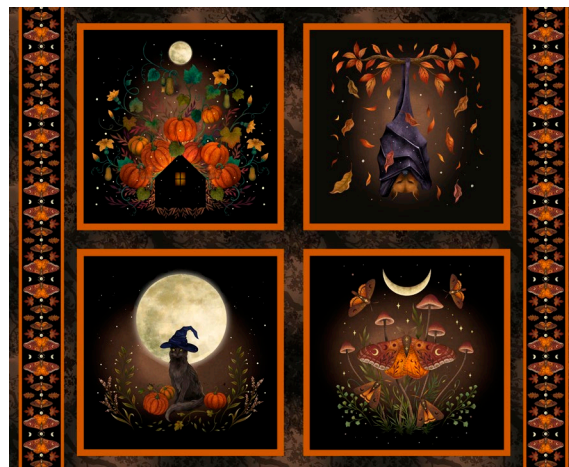
4812-39
Moths and Mushrooms
Brown



4814-97
Spider Web with Shadows
Charcoal



4509-304*
Melange
Cappuccino



4815B-99
Harvest Haunt Block Panel
Black