

Homestead Heritage

by Marilyn Lee



Quilt size: 18" x 55" (0.46m x 1.40m)

Skill Level: Advanced Beginner

Plaza Point Runner

Designed by The Quilt Company Designs by Karen Montgomery
www.checkerdist.com

Plaza Point Runner Ordering Guide

SKU	Yards	Meters	6 Kits	12 Kits
 4873-66	1/2 yds	0.46m	1 bolt	1 bolt
 4881-30	1/4 yds	0.23m	1 bolt	1 bolt
 2311-41	1/2 yds	0.46m	1 bolt	1 bolt
 4509-305	1/4 yds	0.23m	1 bolt	1 bolt

Backing Fabric Option

4876-88	1 1/4 yds	1.14m	1 bolt	2 bolts
---------	-----------	-------	--------	---------

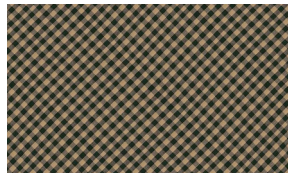
* Indicates binding fabric.

FQ = 18" x 22" (0.45m x 0.55m)

All fabric quantities are based on 15yd bolts unless otherwise indicated.



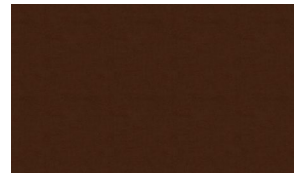
4873-66
Vegetable Baskets
Green



4881-30
Bias Plaid
Taupe



2311-41
Verona
Parchment



4509-305
Melange
Chestnut

****This project does not have binding.****