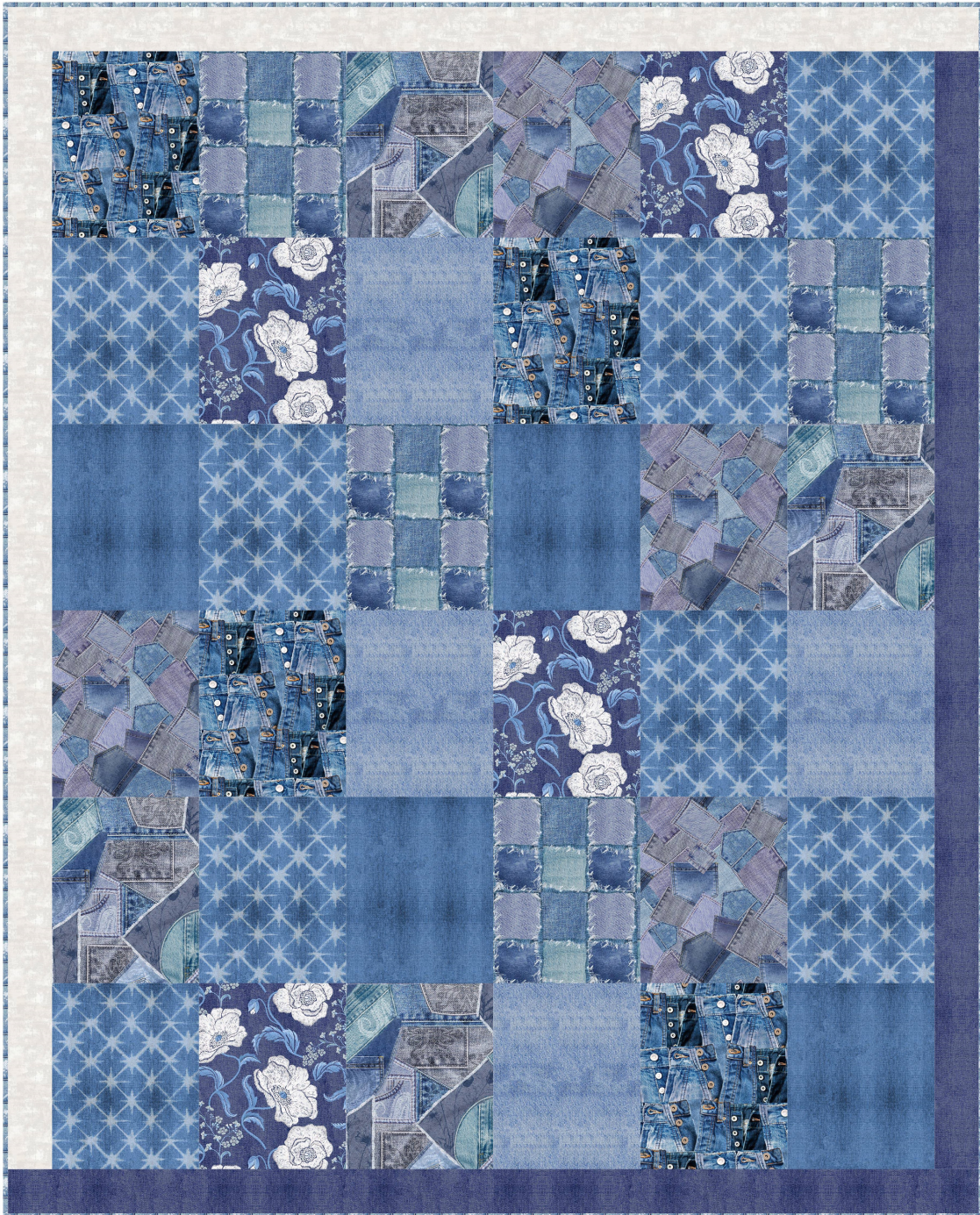




# Denim Friendly

by Urban Essence Designs



Quilt size: 49 1/2" x 61 1/2" (1.26m x 1.56m)

Skill Level: Advanced Beginner

## Patch Happy Throw

Designed by Fran Morgan & Donna Robertson

[www.fabriccafe.com](http://www.fabriccafe.com)



## Patch Happy Throw Ordering Guide

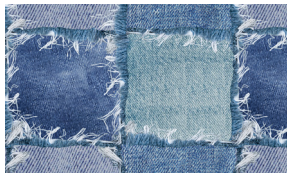
SKU	Yards	Meters	6 Kits	12 Kits
3717-75	FQ	0.23m	1 bolt	1 bolt
3718-75	FQ	0.23m	1 bolt	1 bolt
3719-75	FQ	0.23m	1 bolt	1 bolt
3720-75	FQ	0.23m	1 bolt	1 bolt
3721-75*	FQ	0.23m	1 bolt	1 bolt
3722-75	2 FQ	0.46m	1 bolt	1 bolt
3723-75	FQ	0.23m	1 bolt	1 bolt
3724-70	FQ	0.23m	1 bolt	1 bolt
3725-75	FQ	0.23m	1 bolt	1 bolt
3726-77	FQ	0.23m	1 bolt	1 bolt
3188-90 (10-yard bolt)	FQ	0.23m	1 bolt	1 bolt
<b>Backing Fabric Option</b>				
3723-75	3 1/4 yds	2.97m	2 bolts	3 bolts
* Indicates binding fabric. FQ = 18" x 22" (0.45m x 0.55m) All fabric quantities are based on 15yd bolts unless otherwise indicated.				



3717-75  
Embellished Denim Pockets  
Denim



3718-75  
Embroidered Floral on Denim  
Denim



3719-75  
Denim Patch  
Denim



3720-75  
Denim Flies  
Denim



3721-75\*  
Denim Embroidered Seam Stripe  
Denim



3722-75  
Shibori Denim Pattern  
Lt. Denim



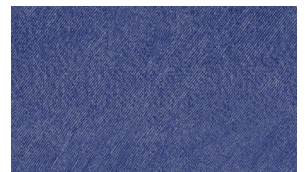
3723-75  
Denim Pockets  
Med. Denim



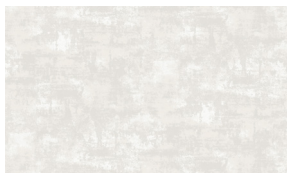
3724-70  
Denim Texture  
Lt. Denim



3725-75  
Denim Texture  
Med. Denim



3726-77  
Denim Texture  
Dk. Denim



3188-90  
Intermix  
Oyster