

Easter Wishes

by Silas M. Studio



Flowers & Fun Wall Hanging Set

Designed by Denise Russell of Pieced Brain

Sizes: 40.5" x 40.5" and 21" x 15"

Skill Level: Beginner

Blank Quilting Corporation

49 West 37th Street ♦ New York, NY 10018 - Tel: 800-294-9495 ♦ Fax: 212-679-4578

www.blankquilting.net

facebook

Easter Wishes - Fabrics in the Collection



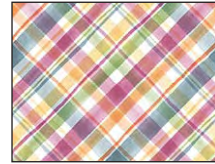
3789-60 Easter Bunnies
Lt. Green



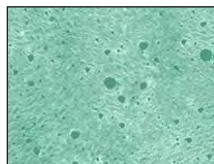
3790-01 Easter
Eggs - White



3791-01 Wildflowers
White



3792-66 Plaid
Green



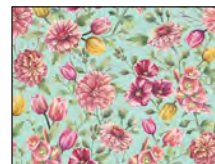
3793-67 Textured
Dots - Turquoise



3794-01 Bleached
Wood - White



3795-01 Floral Easter
Baskets - White



3796-67 Spring
Flowers - Turquoise



3797-60 Flowers &
Easter Eggs - Lt. Green



3798-22 Small
Floral - Pink



3788-60 Easter Bunny Blocks
Lt. Green

Flowers & Fun Wall Hanging Set

Materials

Yardages and cutting instructions are based on 42" of usable fabric width.

Wall Hanging

One 3788-60 Easter Bunny Blocks - Lt. Green

1/8 yard 3792-66 Plaid - Green

1/4 yard each:

3789-60 Easter Bunnies - Lt. Green

3790-01 Easter Eggs - White

3791-01 Wildflowers - White

3796-67 Spring Flowers - Turquoise

3798-22 Small Floral - Pink

1/2 yard 3793-67 Textured Dots - Turquoise

2/3 yard 3797-60 Flowers & Easter Eggs - Lt. Green

3/4 yard 3794-01 Bleached Wood - White

2 3/4 yards 3795-01 Floral Easter Baskets - White for backing

49" x 49" piece of Air Lite® Colour Me 100% Cotton batting

Placemats (4)

1/8 yard 3792-66 Plaid - Green

1/4 yard 3791-01 Wildflowers - White

1/4 yard 3796-67 Spring Flowers - Turquoise

1/2 yard 3790-01 Easter Eggs - White

1/2 yard 3797-60 Flowers & Easter Eggs - Lt. Green

2/3 yard 3793-67 Textured Dots - Turquoise

3/4 yard 3794-01 Bleached Wood - White

1 1/2 yards 3789-60 Easter Bunnies - Lt. Green for backing

(4) 23" x 17" piece of Air Lite® Colour Me 100% Cotton batting



Flowers & Fun Wall Hanging Set

Cut Fabrics

Note: All strips are cut across the width of the fabric (WOF) from selvage to selvage unless otherwise indicated.

Cutting Instructions		
Fabrics	Wall Hanging	Placemats (4)
3788-60 Easter Bunny Blocks Lt. Green	*Cut (5) 10" squares	--
3792-66 Plaid - Green	*Cut (2) 1½" strips for strip sets	*Cut (2) 1" strips - Subcut (48) 1" squares
3789-60 Easter Bunnies Lt. Green	*(1) 6" strip - Subcut (1) 5" x 6" rectangle	*Cut (2) 23" strips - Subcut (4) 17" x 23" rectangles for backing
3790-01 Easter Eggs - White	*Cut (1) 6" strip - Subcut (1) 5" x 6" rectangle	*Cut (8) 1½" strips for border 2
3791-01 Wildflowers - White	*Cut (3) 1½" strips for strip sets	*Cut (6) 1" strips - Save 3 strips for the strips sets - Subcut 3 strips into (24) 1" x 4½" rectangles
3796-67 Spring Flowers Turquoise	*Cut (1) 6" strip - Subcut (1) 5" x 6" rectangle	*Cut (1) 4½" strip - Subcut (12) 3½" x 4½" rectangles
3798-22 Small Floral - Pink	*Cut (4) 1½" strips for border 1	--
3793-67 Textured Dots Turquoise	*Cut (5) 2½" strips for binding	*Cut (8) 2½" strips for binding
3797-60 Flowers & Easter Eggs Lt. Green	*Cut (1) 6" strip - Subcut (1) 5" x 6" rectangle *Cut (4) 3½" strips for border 3	*Cut (2) 6½" strips - Subcut (12) 6½" squares
3794-01 Bleached Wood White	*Cut (2) 1" strips - Subcut (8) 1" x 6" rectangles *Cut (8) 1½" strips - Set aside 5 strips for strip sets - Subcut 3 strips into (12) 1½" x 10" sashing rectangles *Cut (1) 2" strip - Subcut (16) 2" squares *Cut (4) 1½" strips for border 2	*Cut (11) 1" strips. Save 3 strips for the strip sets Subcut 8 strips into: - (24) 1" x 6½" rectangles - (24) 1" x 5½" rectangles *Cut (2) 1½" strips - Subcut (48) 1½" squares *Cut (8) 1" strips for border 1
3795-01 Floral Easter Baskets White	*Cut (2) 48" x WOF panels	--

Flowers & Fun Wall Hanging Set

WALL HANGING

Assemble the Blocks

Note: Measurements include $\frac{1}{4}$ " seam allowances.
Sew with right sides together unless otherwise stated.
If no direction is specified, press the seams toward the darker fabric.

1. Draw a diagonal line on the wrong side of the 2" 3794-01 Bleached Wood - White squares. With right sides together, place one marked White square on one corner of a 5" x 6" 3789-60 Easter Bunnies - Lt. Green rectangle and stitch on the drawn line. Trim the seam allowance to $\frac{1}{4}$ " and press open. Repeat with the other corners of the same rectangle.
 - Repeat this step with the following 5" x 6" rectangles: 3790-01 Easter Eggs - White, 3796-67 Spring Flowers - Turquoise, and 3797-60 Flowers & Easter Eggs - Lt. Green, for a total of 4 assorted 5" x 6" units (*Figure 1*).

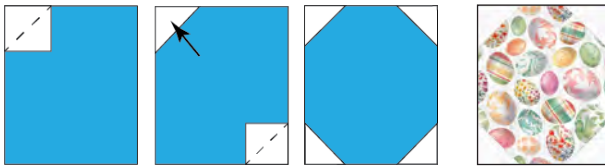


Figure 1 – Make 4 assorted units.

2. Sew (2) 1" x 6" 3794-01 Bleached Wood - White rectangles to opposite sides of each Step 1 unit (*Figure 2*). Press the seams away from the center.



Figure 2

3. Sew a $1\frac{1}{2}$ " 3794-01 Bleached Wood - White strip to a $1\frac{1}{2}$ " 3791-01 Wildflowers - White strip. Press the seam toward the darker fabric. Make 2 strip sets. Crosscut the strip sets into (16) 6" segments. Sew 2 segments to opposite sides of the Step 2 units (*Figure 3*). Press the seams away from the center.



Figure 3

4. Repeat Step 3 with the $1\frac{1}{2}$ " 3794-01 Bleached Wood - White and $1\frac{1}{2}$ " 3792-66 Plaid - Green strips to make 2 strip sets. Crosscut the strip sets into (32) $1\frac{1}{2}$ " segments. Sew the segments in pairs to make (16) 4-patch units. Sew (2) 4-patch units to opposite sides of the remaining Step 3 units (*Figure 4*). Press the seams toward the center.
 - Remove the stitches of a portion of the remainder of the second strip set to cut (4) $1\frac{1}{2}$ " Plaid-Green squares for the cornerstones. Set these aside for the moment.



Figure 4

5. Noting fabric orientation, sew a Step 4 unit to the top and one to the bottom of the Step 3 units to complete (4) 10" blocks (*Figure 5*). Press the seams open.



Figure 5 – Make (4) 10" blocks.

Flowers & Fun Wall Hanging Set

Assemble the Wall Hanging

- Referring to the quilt photo for block placement, lay out the blocks, the 10" 3788-60 Easter Bunny Blocks - Lt. Green squares, and the 1½" x 10" Bleached Wood - White sashing rectangles in 3 rows, and join the blocks and sashing together in each row. Press the seams toward the sashing.
- To make the horizontal sashing rows, sew together 3 Bleached Wood - White sashing rectangles and (2) 1½" Plaid - Green squares set aside in Step 4. Repeat to make 2 sashing strips. Press the seams toward the sashing.
- Matching adjacent seams, sew the block and sashing rows together. Press the seams in one direction.
- For border 1, measure the vertical length of the quilt top through the center and trim (2) 1½" 3798-22 Small Floral - Pink strips that length. Sew one strip to each side of the quilt top and press the seams toward the border strips. Measure the width of the quilt top through the center. Trim 2 more Pink strips that length and sew one to the top and one to the bottom. Press the seams toward the borders.
- Repeat Step 9 with the (4) 1½" Bleached Wood - White strips to make and add border 2.
- Repeat Step 9 with the (4) 3½" 3797-60 Flowers & Easter Eggs - Lt. Green strips to make and add border 3.

Finishing

- Create a sandwich with the batting between the quilt top and the backing. Pin or baste layers together, mark the quilting design, and quilt by hand or machine. When the quilting is complete, remove pins or basting, and trim the batting and backing even with the raw edges of the wall hanging.
- Join the (5) 2½" 3793-67 Textured Dots - Turquoise binding strips together end to end using a diagonal seam to make one long strip. With wrong

sides together, fold in half lengthwise and press. Sew the binding to the edges of the wall hanging, mitering corners, and overlapping ends. Fold the binding to the back of the wall hanging and stitch it in place by hand to finish.

PLACEMATS

Assemble the Blocks

- Draw a diagonal line on the wrong side of the 1½" 3794-01 Bleached Wood - White squares. With right sides together, place one marked White square on one corner of a 3½" x 4½" 3796-67 Spring Flowers - Turquoise rectangle and stitch on the drawn line. Trim the seam allowance to ¼" and press open (*Figure 1*). Repeat with the other corners of the same rectangle. Make (12) 3½" x 4½" units.

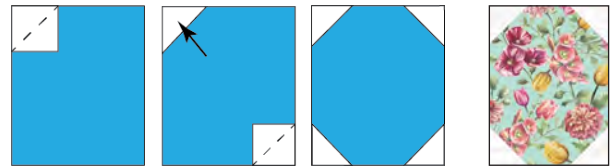


Figure 1 - Make (12) 3½" x 4½" units.

- Sew a 1" 3794-01 Bleached Wood - White strip to a 1" 3791-01 Wildflowers - White strip. Press the seam toward the darker fabric. Make 3 strip sets. Crosscut the strip sets into (24) 4½" segments. Noting fabric orientation, sew 2 segments to opposite sides of the Step 1 units (*Figure 2*). Press the seams away from the center.



Figure 2

- Sew (2) 1" 3792-66 Plaid - Green squares to opposite ends of the (24) 1" x 4½" Wildflowers - White rectangles. Press the seams away from the center. Sew one strip to the top and one to the bottom of a Step 2 unit (*Figure 3*, next page). Press the seams away from the center.

Flowers & Fun Wall Hanging Set



Figure 3

4. Sew (2) 1" x 5½" Bleached Wood - White rectangles to opposite sides of the Step 3 units. Press the seams away from the center. Sew a 1" x 6½" Bleached Wood - White rectangle to the top and one to the bottom of the units to complete (12) 6½" blocks (Figure 4). Press as before.



Figure 4 – Make (12) 6½" blocks.

Assemble the Placemats

5. Referring to the placemat photo for block placement, lay out the blocks and the 6½" 3797-60 Flowers & Easter Eggs Lt. Green squares in 2 rows of 3. Sew the blocks together in each row, press the seams in opposite directions from row to row, then sew the rows together to make the center of the placemat. Repeat to make 4 centers.

6. For border 1, measure the vertical length of a placemat through the center and trim (2) 1" Bleached Wood - White strips that length. Sew one strip to each side of the placemat and press the seams toward the border strips. Measure its width through the center. Trim 2 more White strips that length and sew one to the top and one to the bottom. Press the seams toward the borders. Repeat with the other 3 placemats.
7. Repeat Step 6 with the (8) 1½" 3790-01 Easter Eggs – White strips to add border 2 to the placemats.

Finishing

8. Create a sandwich with the batting between the placemats and the 17" x 23" 3789-60 Easter Bunnies rectangles. Pin or baste the layers together, mark the quilting design, and quilt by hand or machine. When the quilting is complete, remove pins or basting, and trim the batting and backing even with the raw edges of the placemats.
9. Join the (8) 2½" 3793-67 Textured Dots - Turquoise binding strips together end to end using a diagonal seam to make one long strip. With wrong sides together, fold in half lengthwise and press. Sew the binding to the edges of the wall hanging, mitering corners, and overlapping ends. Fold the binding to the back of the wall hanging and stitch it in place by hand to finish.

Flowers & Fun Wall Hanging Set

Diagrams

