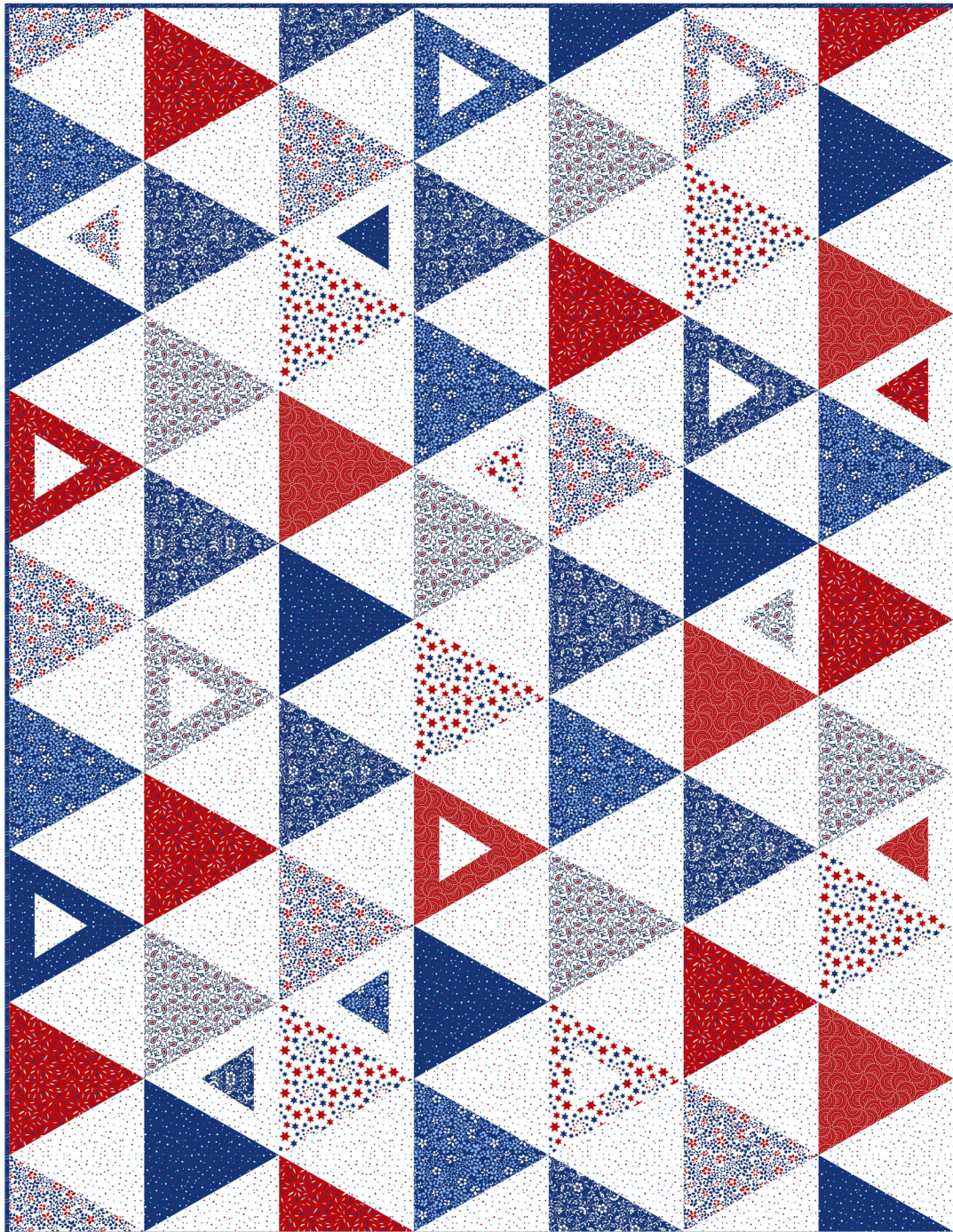




Liberty

by Satin Moon Designs



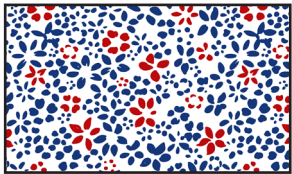
Quilt size: 53" x 68" (1.35m x 1.73m)

Skill Level: Advanced Beginner

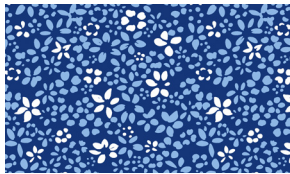
Equal Rights Quilt
Designed and sold by Swirly Girls Design
www.swirlygirlsdesign.com

Equal Rights Quilt Ordering Guide

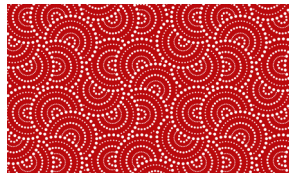
SKU	Yards	Meters	6 Kits	12 Kits
3682-01	1/3 yds	0.30m	1 bolt	1 bolt
3682-77	1/3 yds	0.30m	1 bolt	1 bolt
3683-88	1/3 yds	0.30m	1 bolt	1 bolt
3684-77*	5/8 yds	0.57m	1 bolt	1 bolt
3685-77	1/3 yds	0.30m	1 bolt	1 bolt
3686-01	1/3 yds	0.30m	1 bolt	1 bolt
3689-88	1/3 yds	0.30m	1 bolt	1 bolt
3690-01	2 yds	1.83m	1 bolt	2 bolts
3690-77	1/3 yds	0.30m	1 bolt	1 bolt
3691-01	1/3 yds	0.30m	1 bolt	1 bolt
Backing Fabric Option				
3688-01	3 1/2 yds	3.20m	2 bolts	3 bolts
* Indicates binding fabric. FQ = 18" x 22" (0.45m x 0.55m) All fabric quantities are based on 15yd bolts unless otherwise indicated.				



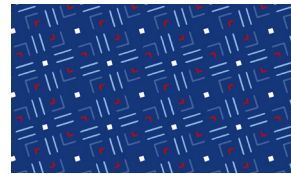
3682-01
Flowers
White



3682-77
Flowers
Navy



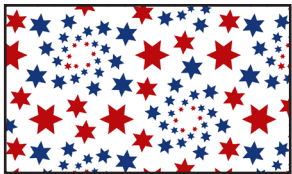
3683-88
Collaged Dotted Circles
Red



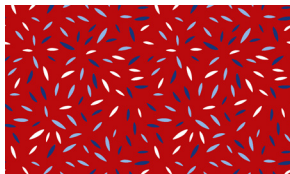
3684-77*
Geometric
Navy



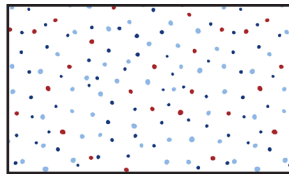
3685-77
Viney Floral
Navy



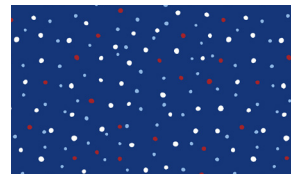
3686-01
Stars
White



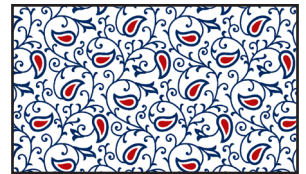
3689-88
Specks
Red



3690-01
Dots
White



3690-77
Dots
Navy



3691-01
Paisley
White