

Under the Sea Quilt



Finished Quilt Size: **74" x 74" (1.88m x 1.88m)**

Finished Block Size: **16" x 16" (.4m x .4m)**

Fabric Collection Name & Fabric Designer: **Seatopia by Silas M. Studio**

Technique: **Pieced**

Designed by: **Lisa Swenson Ruble, Quilty Zest**

Skill Level: **Intermediate**

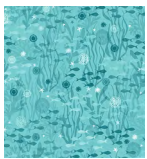
Tech Edited by: **Emma Lea Creative**

Under the Sea Quilt

Fabric Requirements

DESIGN	COLOR	ITEM ID	YARDAGE
(A) Tiny Fish Silhouette	Aqua	4554-67	1½ yards (1.37m)
(B) Tonal Starfish	Navy	4556-77*	1½ yards (1.37m)
(C) Starfish	Aqua	4557-67	1 yard (0.91m)
(D) Watercolor Diagonal Stripe	Aqua	4558-67	¾ yard (0.69m)
(E) Underwater Scene	Lt. Blue	4560-70	1½ yards (1.22m)
(F) Pillow Panel	Aqua	4564B-67	1 yard (0.91m)

* includes binding



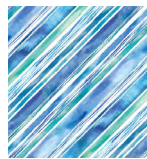
(A)



(B)



(C)



(D)



(E)



(F)

Backing (Purchased Separately)

44" (1.12m) wide			
Seashell Collage	Blue	4559-75	4⅝ yards (4.23m)
OR			
108" (2.74m) wide			2⅝ yards (2.17m)



Backing
44"

Additional Materials:

- 100% cotton thread in color to match
- 82" x 82" (2.08m x 2.08m) batting

All possible care has been taken to ensure the accuracy of this pattern. We are not responsible for printing errors or the manner in which individual work varies.

Please read the instructions carefully before starting this project. If kitting it is recommended a sample is made to confirm accuracy.

All free projects are intended to remain free and are not for resale.

Cutting

Notes:

- Please make sure to check www.blankquilting.net for pattern updates prior to starting the project.
- All strips are cut across the width of fabric (WOF) from selvedge to selvedge edge unless otherwise noted.
- *Fussy cut **Fabric F** squares before cutting **Fabric D** strips because you may wish to adjust the width of the strips. If the panel squares measure less than 16" square, cut **Fabric D** strips 3" wide. Cut the panel squares to ¼" past the art on all sides and sew the borders to the blocks in Step 6 ensuring no block background shows. Trim the framed panel blocks to 20½" square.

Fabric A, cut:

- (1) 12⅞" x WOF; subcut
- (3) 12⅞" squares,
then cut each diagonally in half once;
one triangle will not be used
- (2) 5" x WOF; subcut (10) 5" squares
- (1) 4⅞" x WOF; subcut (8) 4⅞" squares,
then cut each diagonally in half once;
one triangle will not be used
- (7) 2½" x WOF. Sew the strips together end
to end with 45 degree diagonal seams
and cut (2) 2½" x 64½" strips and
(2) 2½" x 60½" strips

Fabric B, cut:

- (8) 2½" x WOF for the binding
- (10) 2½" x WOF; subcut (10) 2½" x 20½" and
(10) 2½" x 16½" strips

Fabric C, cut:

- (1) 12⅞" x WOF; subcut (3) 12⅞" squares,
then cut each diagonally in half once;
one triangle will not be used
- (2) 5" x WOF; subcut (10) 5" squares
- (1) 4⅞" x WOF; subcut (8) 4⅞" squares, then
cut each diagonally in half once;
one triangle will not be used

Fabric D, cut:*

- (8) 2½" x WOF; subcut (8) 2½" x 20½" and
(2) 2½" x 16½" strips

Fabric E, cut:

- (8) 5½" x WOF. Sew the strips together end
to end with 45 degree diagonal seams
and cut (2) 5½" x 74½" strips and
(2) 5½" x 64½" strips

Fabric F, cut:

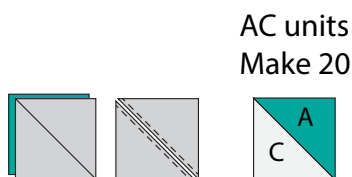
- Fussy cut (4) 16½" squares

Block Assembly

Notes:

- All seam allowances are $\frac{1}{4}$ " (.64cm) unless otherwise noted.
 - Sew pieces right sides together (RST).
 - Press seam allowances open unless otherwise indicated.
1. Draw a diagonal line on the wrong side of all 5" **Fabric C** squares.
 2. Place (1) marked **Fabric C** square RST on (1) 5" **Fabric A** square. Stitch $\frac{1}{4}$ " on both sides of the drawn line, cut on the line and press open (**Fig. 1**). Square up to measure $4\frac{1}{2}$ ". Make a total of (20) AC units.

Fig. 1



3. Lay out (4) AC units and (3) each $4\frac{7}{8}$ " **Fabric A** and **Fabric C** triangles in (4) horizontal rows. Sew the units together in rows and then join the rows to make a diagonal pieced unit (**Fig. 2**). When piecing a triangle to a square, be sure to align the 90 degree corner of the triangle to the square and allow a $\frac{1}{4}$ " point of the triangle to hang off. When piecing rows with triangle edges, match the interior block seams and allow the triangle ends to hang off $\frac{1}{4}$ " on both sides (**Fig. 2b**).

Fig. 2

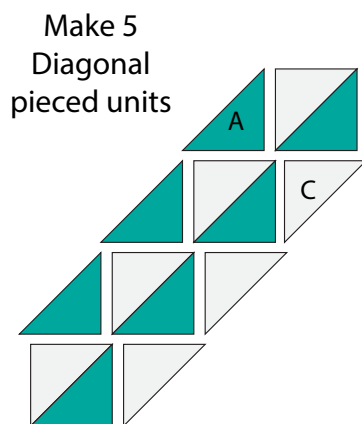
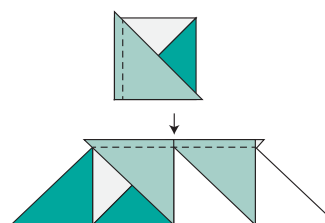


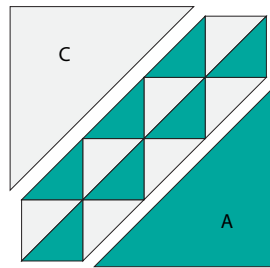
Fig. 2b



4. Sew (1) each $12\frac{7}{8}$ " **Fabric A** and **Fabric C** triangle to opposite sides of the pieced diagonal unit to make a wave block (**Fig. 3**). Square up to measure $16\frac{1}{2}$ ". Make (5).

Fig. 3

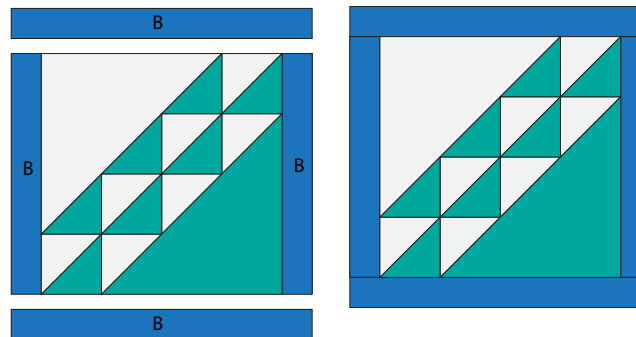
Wave block
Make 5



5. Sew (2) $2\frac{1}{2}$ " x $16\frac{1}{2}$ " **Fabric B** strips to opposite sides of (1) wave block. Sew (2) $2\frac{1}{2}$ " x $20\frac{1}{2}$ " **Fabric B** strips to the top and bottom to make a framed wave block (**Fig. 4**). Make (5).

Fig. 4

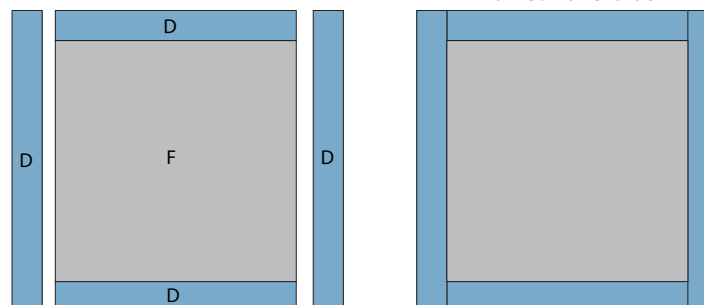
Make 5
Framed Wave Block



6. Sew (2) $2\frac{1}{2}$ "* x $16\frac{1}{2}$ " **Fabric D** strips to top and bottom of (1) $16\frac{1}{2}$ " **Fabric F** square. Sew (2) $2\frac{1}{2}$ " x $20\frac{1}{2}$ " **Fabric D** strips to opposite sides to make a framed panel block (**Fig. 5**). Make (4).
*see Cutting Notes

Fig. 5

Make 4
Framed Panel Block



All possible care has been taken to ensure the accuracy of this pattern. We are not responsible for printing errors or the manner in which individual work varies.

Please read the instructions carefully before starting this project. If kitting it is recommended a sample is made to confirm accuracy.

All free projects are intended to remain free and are not for resale.

Quilt Top Assembly

Follow the Quilt Layout (page 7) while assembling the quilt top.

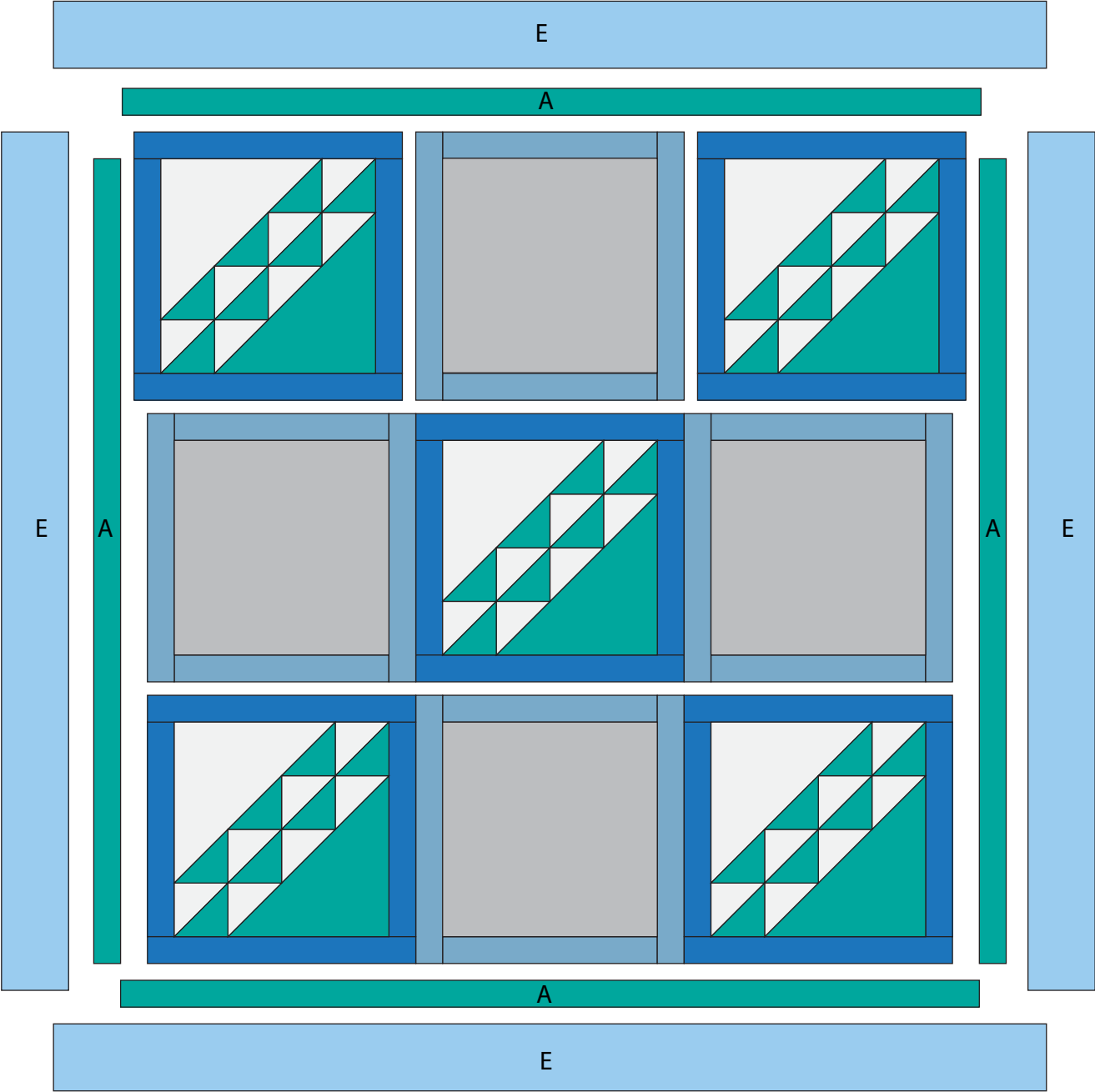
7. Lay out the framed wave blocks and framed panel blocks into (3) rows of (3) blocks each. Sew into rows and join the rows to make the quilt center, which measures 60½" square.
8. Sew (2) 2½" x 60½" **Fabric A** strips to opposite sides of the quilt center. Sew (2) 2½" x 64½" **Fabric A** strips to the top and bottom.
9. Sew (2) 5½" x 64½" **Fabric E** strips to opposite sides of the quilt center. Sew (2) 5½" x 74½" **Fabric E** strips to the top and bottom to complete the quilt top, which measures 74½" square.

Finishing

10. Sew together the (8) 2½" x WOF **Fabric B** binding strips end to end using diagonal seams. Press the seams open. Press the binding strip in half wrong sides together.
11. Layer the backing (wrong side up), batting, and quilt top (right side up). Baste the layers together and quilt as desired. Trim excess batting and backing even with the quilt top.
12. Leaving an 8" tail of binding and beginning along an edge of the quilt top, match raw edges of the binding to the raw edges of the quilt top. Sew the binding to the outside edge around all four sides and miter corners. Stop sewing approximately 12" from where you started and backstitch.
13. Lay both loose ends of binding flat along the quilt edge. Where these two loose ends meet, fold them back onto themselves and press to form a crease. Using this crease as your stitching line, sew the two open ends of the binding together, right sides matching. Trim seam to ¼" and press seam open. Finish sewing the binding to the quilt top.
14. Turn the binding over the raw edge to the back of the quilt and hand or machine stitch in place.

Under the Sea Quilt

Quilt Layout



*All possible care has been taken to ensure the accuracy of this pattern. We are not responsible for printing errors or the manner in which individual work varies.
Please read the instructions carefully before starting this project. If kitting it is recommended a sample is made to confirm accuracy.
All free projects are intended to remain free and are not for resale.*