



Seatopia

by Danielle Hartgers



Quilt size: 56" x 72" (1.42m x 1.83m)

Skill Level: Advanced Beginner

Underwater Communities Quilt

Designed by Sue Harvey and Sandy Boobar of Pine Tree Country Quilts

www.pinetreecountryquilts.com

Underwater Communities Quilt Ordering Guide

SKU	Yards	Meters	6 Kits	12 Kits
 4554-67	1 1/3 yds	1.22m	1 bolt	2 bolts
 4555-77	5/8 yds	0.57m	1 bolt	1 bolt
 4556-77*	1 1/4 yds	1.14m	1 bolt	2 bolts
 4557-67	3/4 yds	0.69m	1 bolt	1 bolt
 4560-70	5/8 yds	0.57m	1 bolt	1 bolt
 4561-72	3/4 yds	0.69m	1 bolt	1 bolt
 4564B-67 (10yd bolt)	1 yd	0.91m	1 bolt	2 bolts

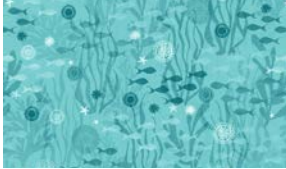
Backing Fabric Option

4559-75	4 1/2 yds	4.11m	2 bolts	4 bolts
---------	-----------	-------	---------	---------

* Indicates binding fabric.

FQ = 18" x 22" (0.45m x 0.55m)

All fabric quantities are based on 15yd bolts unless otherwise indicated.



4554-67
Tiny Fish Silhouette
Aqua



4555-77
Seahorses
Navy



4556-77*
Tonal Starfish
Navy



4557-67
Starfish
Aqua



4560-70
Underwater Scene
Lt. Blue



4561-72
Jelly Fish
Med. Blue



4564B-67
Pillow Panel
Aqua