

Brushed in Nature

by Liz Chaderton








Quilt size: 56" x 80" (1.4m x 2.03m)

Skill Level: Advanced Beginner

Big Wig Quilt

Designed by Susan Ziegler of Quiltin' Tia
www.quiltintia.com

Big Wig Quilt Ordering Guide

SKU	Yards	Meters	6 Kits	12 Kits
 5153-33	2 yds	1.83m	1 bolt	2 bolts
 5154-55	1 yd	0.91m	1 bolt	1 bolt
 5159-77	1 yd	0.91m	1 bolt	1 bolt
 5161-77	2 yds	1.83m	1 bolt	2 bolts
 5164-77	2/3 yds	0.61m	1 bolt	1 bolt

44" Backing Fabric Option

5160-44	5 yds	4.57m	3 bolts	5 bolts
---------	-------	-------	---------	---------

* Indicates binding fabric.

FQ = 18" x 22" (0.45m x 0.55m)

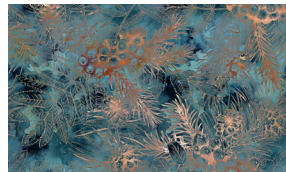
All fabric quantities are based on 15yd bolts unless otherwise indicated.



5153-33
Splatter Texture
Cream



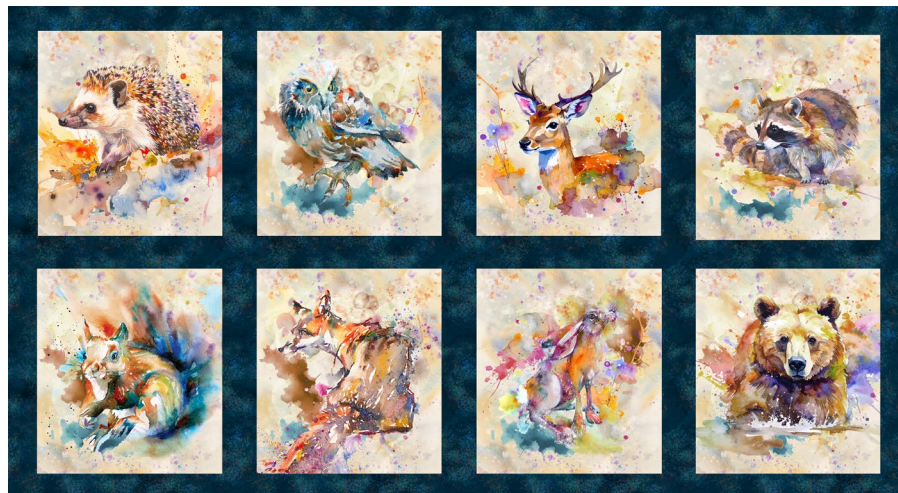
5154-55*
Plaid
Rust



5159-77
Pinecone Texture
Navy



5161-77
Texture
Navy



5164-77
Continuous Yardage
Navy