

Brushed in Nature

by Liz Chaderton



Quilt size: 56" x 75" (1.4m x 1.9m)





Skill Level: Advanced Beginner

Stellar View Quilt

Designed by Susan Ziegler of Quiltin' Tia

www.quiltintia.com

Stellar View Quilt Ordering Guide

SKU	Yards	Meters	6 Kits	12 Kits
 5153-33	1 yd	0.91m	1 bolt	1 bolt
 5154-55	1 yd	0.91m	1 bolt	1 bolt
 5159-77	1 yd	0.91m	1 bolt	1 bolt
 5161-77	2 yds	1.83m	1 bolt	2 bolts
 5165P-77 (8yd bolt)	2/3 yds	0.61m	1 bolt	1 bolt

44" Backing Fabric Option

5158-77	4 yds	3.66m	2 bolts	4 bolts
---------	-------	-------	---------	---------

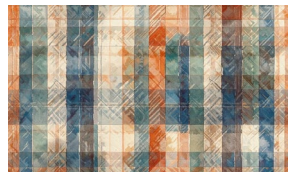
* Indicates binding fabric.

FQ = 18" x 22" (0.45m x 0.55m)

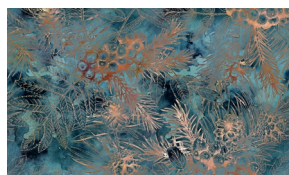
All fabric quantities are based on 15yd bolts unless otherwise indicated.



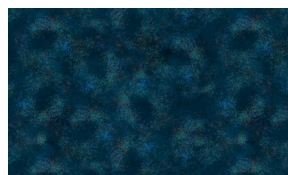
5153-33
Splatter Texture
Cream



5154-55
Plaid
Rust



5159-77
Pinecone Texture
Navy



5161-77*
Texture
Navy



5165P-77
Panel
Navy