

Quilt size: 40 1/2" x 58 1/2" (1.03m x 1.49m)

Skill Level: Advanced Beginner

**Check Me Out Quilt - Dark**  
Designed by Jocelyn Ueng of It's Sew Emma  
[www.itssewemma.com](http://www.itssewemma.com)

## Check Me Out Quilt - Dark Ordering Guide

SKU	Yards	Meters	6 Kits	12 Kits
 5216-11	1/2 yds	0.46m	1 bolt	1 bolt
 5217-67	1 1/4 yds	1.14m	1 bolt	2 bolts
 5221-27	3/8 yds	0.34m	1 bolt	1 bolt
 5222-69	1 yd	0.91m	1 bolt	1 bolt
 5224-14	1/2 yds	0.46m	1 bolt	1 bolt
 5228-53*	1/2 yds	0.46m	1 bolt	1 bolt
 5229-69	1/2 yds	0.46m	1 bolt	1 bolt

### 44" Backing Fabric Option

5217-67	2 7/8 yds	2.63m	2 bolts	3 bolts
---------	-----------	-------	---------	---------

### 108" Backing Fabric Option

5249-54	1 3/8 yds	1.26m	1 bolt	1 bolt
---------	-----------	-------	--------	--------

\* Indicates binding fabric.

FQ = 18" x 22" (0.45m x 0.55m)

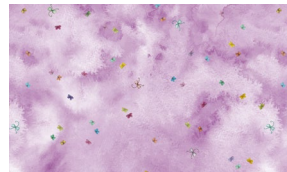
All fabric quantities are based on 15yd bolts unless otherwise indicated.



5216-11  
Wheelbarrow Blooms  
Pearl



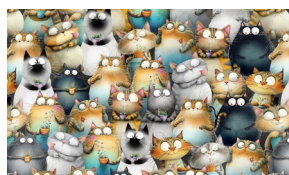
5217-67  
Cat Faces Outline  
Forest



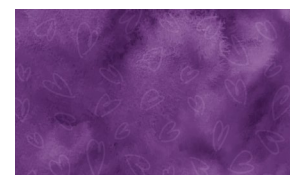
5221-27  
Tiniest Butterflies  
Ultra



5224-14  
Cat Boxes  
Cream



5222-69  
Herd of Cats  
Jade



5228-53\*  
Watercolor Texture Heart  
Pansy



5229-69  
Watercolor Texture Leaf  
Jade