






Quilt size: 66" x 72" (1.68m x 1.83m)

Skill Level: Advanced Beginner

## Panel Bliss Quilt

Designed by Swirly Girls Design  
[www.swirlygirlsdesign.com](http://www.swirlygirlsdesign.com)

# Panel Bliss Quilt Ordering Guide

SKU	Yards	Meters	6 Kits	12 Kits
 5130-15	3/8 yds	0.34m	1 bolt	1 bolt
 5133-15	3/8 yds	0.34m	1 bolt	1 bolt
 5134-69	3/8 yds	0.34m	1 bolt	1 bolt
 5135-55	3/8 yds	0.34m	1 bolt	1 bolt
 5136-19	1 5/8 yds	1.49m	1 bolt	2 bolts
 5137-14	2 yds	1.83m	1 bolt	2 bolts
 5138P-73 (10yd bolts)	1 yd	0.91m	1 bolt	2 bolts

## 44" Backing Fabric Option

5131-17	4 1/2 yds	4.11m	2 bolts	4 bolts
---------	-----------	-------	---------	---------

## 108" Backing Fabric Option

5250-69	2 1/4 yds	2.06m	1 bolt	2 bolts
---------	-----------	-------	--------	---------

\* Indicates binding fabric.

FQ = 18" x 22" (0.45m x 0.55m)

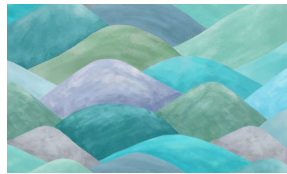
All fabric quantities are based on 15yd bolts unless otherwise indicated.



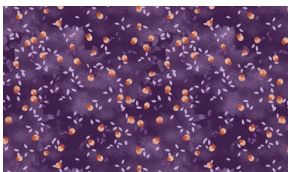
5130-15  
Flowers  
Pink



5133-15  
Floating Leaves  
Orchid



5134-69  
Packed Mountains  
Jade



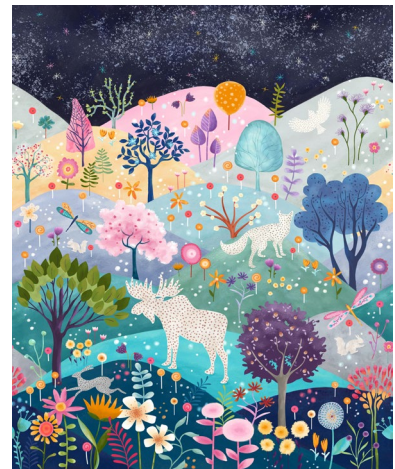
5135-55  
Ditzy Dot  
Aubergine



5136-19  
Textured Leaves  
Mist



5137-14  
Starry Sky  
Cream



5138P-73  
Panel  
Peacock