

# Riders Club

by Running Wild Art Studio



Quilt size: 61" x 79" (1.55m x 2.01m)

Skill Level: Advanced Beginner

**Large and In Charge Quilt**

Designed by Susan Ziegler

[www.quiltintia.com](http://www.quiltintia.com)

## Large and In Charge Quilt Ordering Guide

SKU	Yards	Meters	6 Kits	12 Kits
 5168-41	3/8 yds	0.34m	1 bolt	1 bolt
 5172-37	3/8 yds	0.34m	1 bolt	1 bolt
 5173-37	3/8 yds	0.34m	1 bolt	1 bolt
 5174-47	3/8 yds	0.34m	1 bolt	1 bolt
 5175-73	1 yd	0.91m	1 bolt	1 bolt
 5176-41	1 1/4 yds	1.14m	1 bolt	2 bolts
 5167-96*	2 yds	1.83m	1 bolt	2 bolts

### 44" Backing Fabric Option

5177-73	4 7/8 yds	4.46m	3 bolts	5 bolts
---------	-----------	-------	---------	---------

\* Indicates binding fabric.

FQ = 18" x 22" (0.45m x 0.55m)

All fabric quantities are based on 15yd bolts unless otherwise indicated.



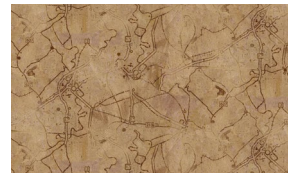
5168-41  
Motorcycle Toss  
Parchment



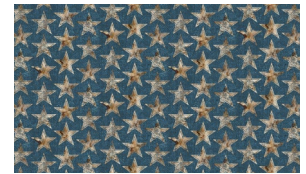
5172-37  
Tread Marks  
Rust



5173-37  
Tool Toss  
Rust



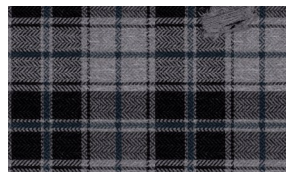
5174-47  
Map  
Biscuit



5175-73  
Star Allover  
Teal



5176-41  
Texture  
Parchment



5167-96\*  
Old Favorite - Plaid  
Shadow