

# Riders Club

by Running Wild Art Studio



Quilt size: 59" x 65" (1.50m x 1.65m)

Skill Level: Advanced Beginner

## Panel Squared Quilt

Designed by Susan Ziegler

[www.quiltintia.com](http://www.quiltintia.com)

## Panel Squared Quilt Ordering Guide

| SKU  | Yards     | Meters | 6 Kits | 12 Kits |
|--|-----------|--------|--------|---------|
|  5168-41              | FQ        | 0.23m  | 1 bolt | 1 bolt  |
|  5169-41              | FQ        | 0.23m  | 1 bolt | 1 bolt  |
|  5170-73              | FQ        | 0.23m  | 1 bolt | 1 bolt  |
|  5173-37              | FQ        | 0.23m  | 1 bolt | 1 bolt  |
|  5174-47              | FQ        | 0.23m  | 1 bolt | 1 bolt  |
| 5177-73  | 1 1/4 yds | 1.14m  | 1 bolt | 2 bolts |
|  5178P-41 (10yd bolt) | 1 yd      | 0.91m  | 1 bolt | 2 bolts |
|  5167-36              | FQ        | 0.23m  | 1 bolt | 1 bolt  |
|  5167-96*             | 1 yd      | 0.91m  | 1 bolt | 1 bolt  |

### 44" Backing Fabric Option

|         |           |       |         |         |
|---------|-----------|-------|---------|---------|
| 5171-73 | 4 1/8 yds | 3.77m | 2 bolts | 4 bolts |
|---------|-----------|-------|---------|---------|

\* Indicates binding fabric.

FQ = 18" x 22" (0.45m x 0.55m)

All fabric quantities are based on 15yd bolts unless otherwise indicated.



5168-41  
Motorcycle Toss  
Parchment



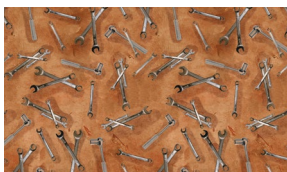
5169-41  
Helmet Toss  
Parchment



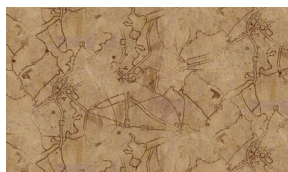
5170-73  
Patchwork  
Teal



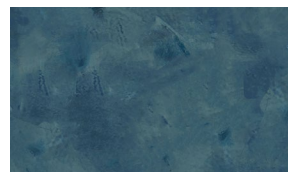
5178P-41  
Panel  
Multi



5173-37  
Tool Toss  
Rust



5174-47  
Map  
Biscuit



5177-73  
Texture  
Teal



5167-36  
Old Favorite - Plaid  
Beige



5167-96\*  
Old Favorite - Plaid  
Shadow