

# Steel Magnolias

by Danielle Murray













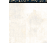

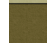
Quilt size: 55" x 65" (1.40m x 1.65m)

Skill Level: Advanced Beginner

## Magnolia Magic Quilt

Designed by Matthew Pridemore of The Whimsical Workshop  
[www.blankquilting.net](http://www.blankquilting.net)

## Magnolia Magic Quilt Ordering Guide

SKU	Yards	Meters	6 Kits	12 Kits
 5269-71	1/2 yd	0.46m	1 bolt	1 bolt
 5269-73	1/2 yd	0.46m	1 bolt	1 bolt
 5270-73*	5/8 yd	0.57m	1 bolt	1 bolt
 5271-71	7/8 yd	0.80m	1 bolt	1 bolt
 5273-71	1/3 yd	0.30m	1 bolt	1 bolt
 5274-62	1/8 yd	0.11m	1 bolt	1 bolt
 5275-73	1/3 yd	0.30m	1 bolt	1 bolt
 5276-73	1/2 yd	0.46m	1 bolt	1 bolt
 5277-71	1/3 yd	0.30m	1 bolt	1 bolt
 5277-73	1/3 yd	0.30m	1 bolt	1 bolt
 5278-41	1 7/8 yds	1.71m	1 bolt	2 bolts
 4509-802	1/3 yd	0.30m	1 bolt	1 bolt
 4509-805	1/3 yd	0.30m	1 bolt	1 bolt

### 44" Backing Fabric Option

5270-73	4 1/8 yds	3.77m	2 bolts	4 bolts
---------	-----------	-------	---------	---------

### 108" Backing Fabric Option

5279-77	2 1/8 yds	1.94m	1 bolt	2 bolts
---------	-----------	-------	--------	---------

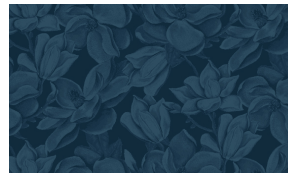
\* Indicates binding fabric.  
 FQ = 18" x 22" (0.45m x 0.55m)  
 All fabric quantities are based on 15yd bolts unless otherwise indicated.



5269-71  
Magnolia Toss  
Waterfall



5269-73  
Magnolia Toss  
Midnight



5270-73\*  
Tonal Magnolia  
Midnight



5271-71  
Small Magnolia Toss  
Waterfall



5273-71  
Textured Scroll  
Waterfall



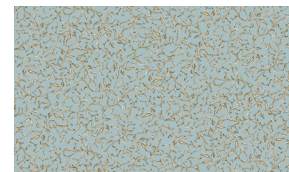
5274-62  
Scallop  
Olive



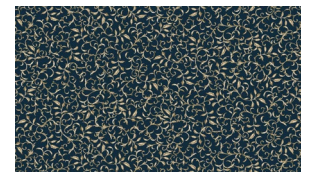
5275-73  
Bud Toss  
Midnight



5276-73  
Trellis  
Midnight



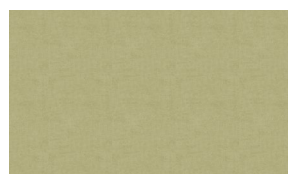
5277-71  
Tiny Scroll  
Waterfall



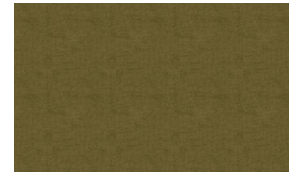
5277-73  
Tiny Scroll  
Midnight



5278-41  
Texture  
Parchment



4509-802  
Melange  
Nile



4509-805  
Melange  
Dark Olive