

# Steel Magnolias

by Danielle Murray



Quilt size: 66" x 84" (1.68m x 2.13m)

Skill Level: Advanced Beginner

**Wandering Magnolias Quilt**

Designed by PhoebeMoon Designs

[www.phoebemoon.com](http://www.phoebemoon.com)

## Wandering Magnolias Quilt Ordering Guide

SKU	Yards	Meters	6 Kits	12 Kits
 5269-73	2 yds	1.83m	1 bolt	2 bolts
 5270-73*	3/4 yd	0.69m	1 bolt	1 bolt
 5271-71	1/4 yd	0.23m	1 bolt	1 bolt
 5271-73	1/4 yd	0.23m	1 bolt	1 bolt
 5272-62	1/4 yd	0.23m	1 bolt	1 bolt
 5273-71	1/4 yd	0.23m	1 bolt	1 bolt
 5274-62	1/4 yd	0.23m	1 bolt	1 bolt
 5276-73	1/4 yd	0.23m	1 bolt	1 bolt
 5277-71	1/4 yd	0.23m	1 bolt	1 bolt
 5277-73	1/4 yd	0.23m	1 bolt	1 bolt
 5278-41	4 yds	3.66m	2 bolts	4 bolts

### 44" Backing Fabric Option

5269-71	5 1/4 yds	4.80m	3 bolts	5 bolts
---------	-----------	-------	---------	---------

### 108" Backing Fabric Option

5279-17	2 5/8 yds	2.40m	1 bolt	2 bolts
---------	-----------	-------	--------	---------

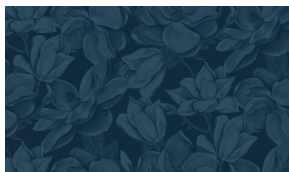
\* Indicates binding fabric.

FQ = 18" x 22" (0.45m x 0.55m)

All fabric quantities are based on 15yd bolts unless otherwise indicated.



5269-73  
Magnolia Toss  
Midnight



5270-73\*  
Tonal Magnolia  
Midnight



5271-71  
Small Magnolia Toss  
Waterfall



5271-73  
Small Magnolia Toss  
Midnight



5272-62  
Leaf Toss  
Olive



5273-71  
Textured Scroll  
Waterfall



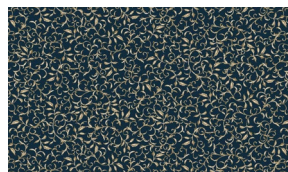
5274-62  
Scallop  
Olive



5276-73  
Trellis  
Midnight



5277-71  
Tiny Scroll  
Waterfall



5277-73  
Tiny Scroll  
Midnight



5278-41  
Texture  
Parchment