

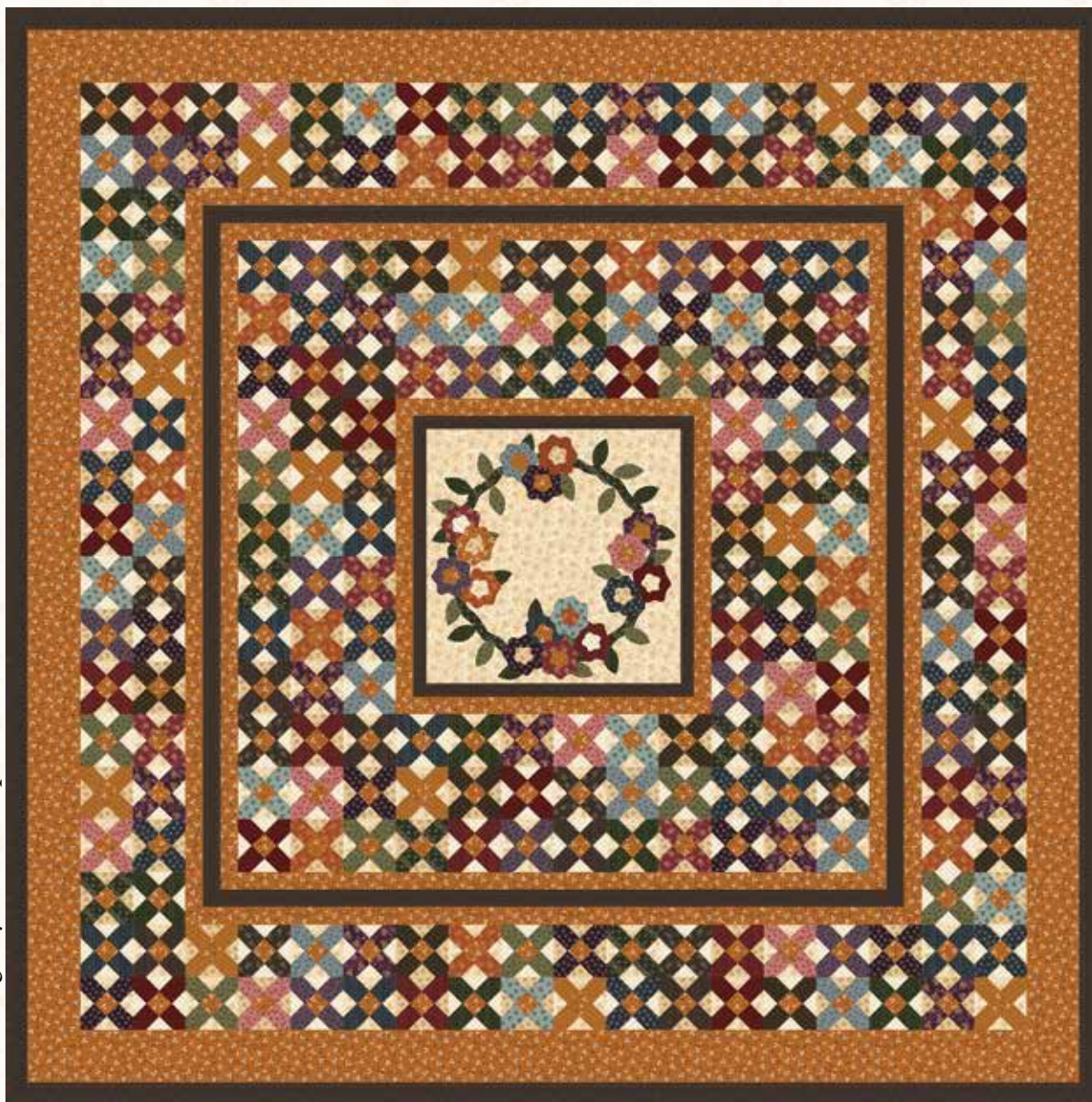
Abby's Treasures

A Free Project Sheet
NOT FOR RESALE

By Missie Carpenter

Quilt 1

Quilt Design by Missie Carpenter



Skill Level: Intermediate



facebook

Finished Quilt Size: 62" x 62"

49 West 37th Street, 14th floor, New York, NY 10018

Toll Free: 800-294-9495

fax: 212-679-4578

www.blankquilting.net

Please check our website for pattern updates before starting this project.

ABBY'S TREASURES

Quilt 1

Finished Quilt Size: 62" x 62"

Fabrics in the Abby's Treasures Collection



Diamonds - Brown
1318-39



Diamonds - Gold
1318-44



Diamonds - Red
1318-88



Tulip Stripe - Cheddar
1319-33



Tulip Stripe - Brown
1319-39



Tulip Stripe - Green
1319-66



Tulip Stripe - Slate
1319-79



Tulip Stripe - Red
1319-88



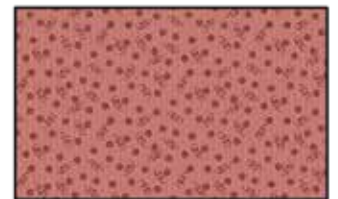
Dots & Curly Q's - Purple
1320-55



Dots & Curly Q's - Green
1320-66



Dots & Curly Q's - Slate
1320-79



Dots & Curly Q's - Red
1320-88



Mini Floral - Ivory
1321-41



Mini Floral - Slate
1321-79



Star Clusters - Ivory
1322-41



Star Clusters - Gold
1322-44



Star Clusters - Purple
1322-55



Biased Stripe - Ivory
1323-41



Biased Stripe - Green
1323-66



Fans - Purple
1324-55



Fans - Slate
1324-79



Squares - Cheddar
1325-33



Squares - Brown
1325-39



Squares - Red
1325-88

Materials

1 Bundle	Abby's Treasure Fat Quarter Bundle - Multi (A)	
	(24) Fat 1/4's	
2 1/2 yards	Star Clusters - Gold (B)	1322-44
5/8 yard	Mini Floral - Ivory (C-1)	1321-41
5/8 yard	Bias Stripe - Ivory (C-2)	1323-41
1 1/8 yards	Star Clusters - Ivory (D)	1322-41
2 1/2 yards	Tulip Stripe - Brown (E)	1319-39*
1 Fat 1/4	Bias Stripe - Green (F)	1323-66
1/8 yard	Tulip Stripe - Green (G-1)	1319-66
1/8 yard	Dots & Curly Q's - Green (G-2)	1320-66
4 yards	Star Clusters - Ivory (Backing)	1322-41

*Includes binding

Batting: 70" x 70"

(Recommended: Air Lite® Colour Me 100% Cotton)

Cutting Instructions

Please note: All strips are cut across the width of fabric (WOF) from selvage to selvage edge unless otherwise noted.

From the Abby's Treasure Fat Quarter Bundle - Multi (A), cut:

- Select (19) Fat 1/4's for Blocks. From each of the selected Fat 1/4's cut:
 - (2) 2 3/4" x 21" strips. *Note: Keep these strips as a matched pair.*
 - (26) 1 1/4" x 2 3/4" strips.
- The remaining Fat 1/4's are used for Applique. See instructions to cut a total of (16) Flowers and (16) Flower Centers

From the Star Clusters - Gold (B), cut:

- (4) 3 1/2" x 64" Length of Fabric (LOF) strips.
- (4) 1 1/2" x 45" LOF strips.
- (4) 1 1/2" x 42" LOF strips.
- From the remaining fabric cut:
 - (19) 1 1/2" x 21" WOF strips.
 - (4) 1 1/2" x 18 1/2" WOF strips.
 - (4) 1 1/2" x 16 1/2" WOF strips.

From the Mini Floral - Ivory (C-1), cut:

- (6) 3" x WOF strips. Sub-cut (79) 3" squares. Cut the squares across both diagonals for a total of (316) 3" triangles.

From the Biased Stripe - Ivory (C-2)

- (6) 3" x WOF strips. Sub-cut (79) 3" squares. Cut the squares across both diagonals for a total of (316) 3" triangles.

From the Star Clusters - Ivory (D), cut:

- (6) 3" x WOF strips. Sub-cut (79) 3" squares. Cut the squares across both diagonals for a total of (316) 3" triangles.
- (1) 15" square for the applique background.

From the Tulip Stripe - Brown (E), cut:

- Cut First: (7) 2 1/2" x WOF strips for the binding.
- Cut Second: Fussy cut the following strips each centered on stripe:
 - (4) 1 1/2" x 66" LOF strips.
 - (4) 1 1/2" x 44" LOF strips.
 - (2) 1 1/4" x 16 1/2" LOF strips.
 - (2) 1 1/4" x 15" LOF strips.

From the Bias Stripe - Green (F), cut:

- See instructions to cut (1) Wreath.

From the Tulip Stripe - Green (G-1), cut:

- See instructions to cut (13) Leaves.

From the Dots & Curly Q's - Green (G-2), cut:

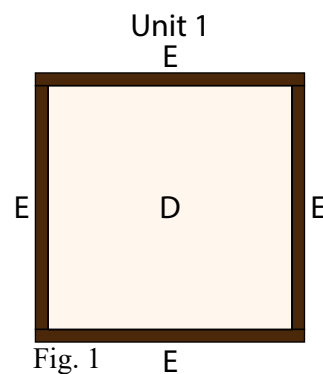
- See instructions to cut (13) Leaves.

From the Star Clusters - Ivory (Backing), cut:

- (2) 70" x WOF strips for the backing. Sew the strips together and trim to make the 70" x 70" back.

Block Assembly

1. Sew (1) 1 1/4" x 15" Fabric E strip to each side of the 15" Fabric D square. Sew (1) 1 1/4" x 16 1/2" Fabric E strip to the top and to the bottom of the Fabric D square to make (1) Unit 1 square.



2. Following the manufacturer's instructions, trace the listed number of each template onto the paper side of the fusible web. Roughly cut out each template about 1/8" outside the drawn lines.
3. Press each template onto the wrong side of the fabrics as listed on the templates. Cut out each template on the drawn lines.

4. Refer to the Figure 2 below to arrange and press the Fabric F Wreath, Fabric G-1 leaves, Fabric G-2 leaves, Fabric A Flowers and Fabric A Flower Centers onto the Unit 1 square.

5. Finish the raw edges of each shape with a decorative stitch such as a buttonhole or satin stitch.

6. Sew (1) $1\frac{1}{2}$ " x $16\frac{1}{2}$ " Fabric B strip to each side of the Unit 1 square. Sew (1) $1\frac{1}{2}$ " x $18\frac{1}{2}$ " Fabric B strip to the top and to the bottom of the Unit 1 square to make the Center Block (Fig. 2).

7. Sew (1) $2\frac{3}{4}$ " x 21" matching Fabric A strip to each side of (1) $1\frac{1}{2}$ " x 21" Fabric B strip to make (1) Strip Set 1 (Fig. 3).

8. Cut the Strip Set 1 into (13) $1\frac{1}{2}$ " x 6" Unit 2 strips (Fig. 4).

9. Repeat Steps 7-8 with the remaining (18) Fabric A matching strip pairs.

Strip Set 1
make 1

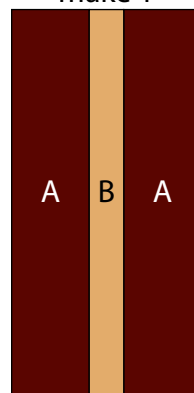


Fig. 3

Unit 2
cut 13

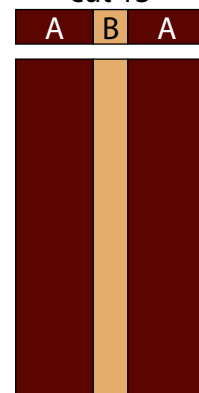


Fig. 4

Center Block

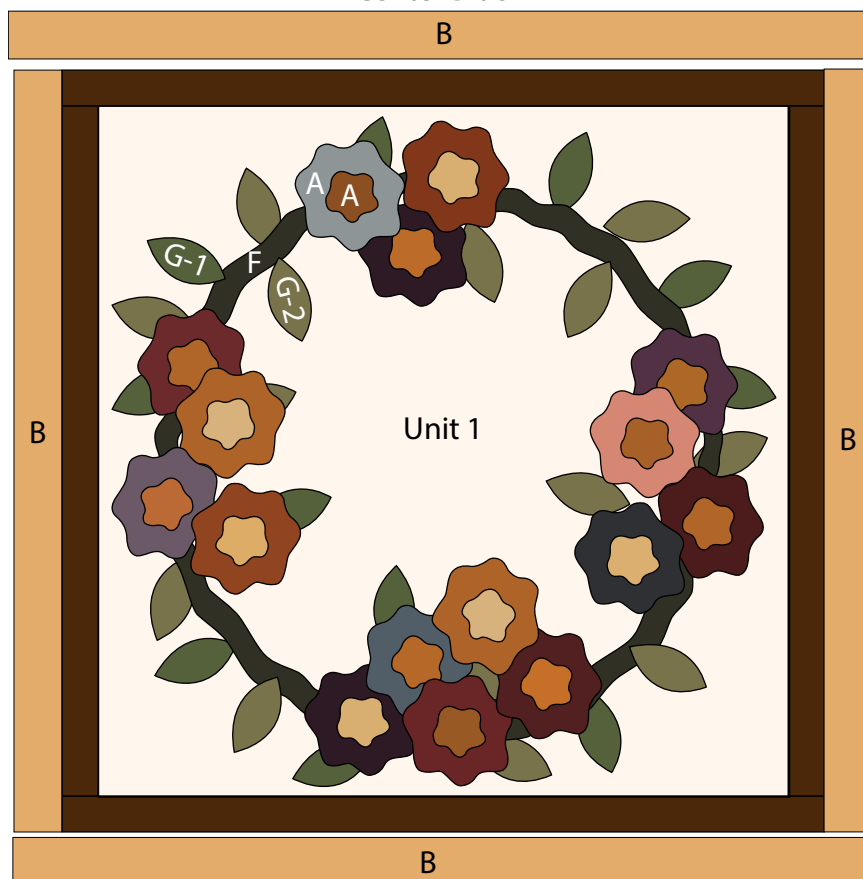


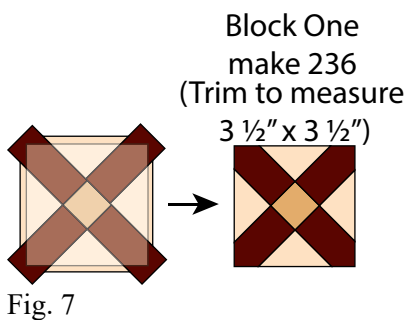
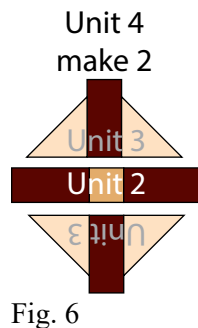
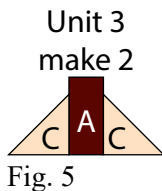
Fig. 2

10. Select (1) Unit 2 strip and (2) $1\frac{1}{2}'' \times 2\frac{3}{4}''$ Fabric A strips that match the Fabric A strips in the selected Unit 2 strip. Select (4) $3''$ matching triangles (Fabric C-1, C-2 or D).

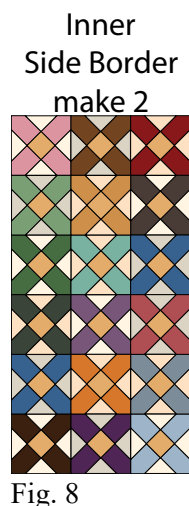
11. Sew (1) $3''$ triangle to each side of (1) $1\frac{1}{2}'' \times 2\frac{3}{4}''$ Fabric A strip to make (1) Unit 3 triangle (Fig. 5). Repeat to make a second Unit 3 triangle.

12. Sew (1) Unit 3 triangle to the top and to the bottom of (1) Unit 2 strip to make (1) Unit 4 piece (Fig. 6). Trim the unit to measure $3\frac{1}{2}''$ square to make (1) Block One square (Fig. 7). *Note: The Fabric A strips should match within each block and the four $3''$ triangles should also match within the same block.*

13. Repeat Steps 10-12 using the remaining Unit 2 strips, matching Fabric A strips and matching $3''$ triangles to make (236) Block One squares total.



14. Follow Figure 8 and sew together (18) Block One squares into a 3×6 matrix to make (1) Inner Side Border. Repeat to make a second Inner Side Border.



15. Follow Figure 9 and sew together (36) Block One squares into a 3×12 matrix to make the Inner Top Border. Repeat to make the Inner Bottom Border.

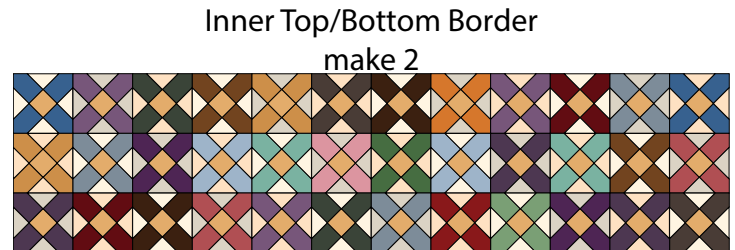


Fig. 9

16. Follow Figure 10 and sew together (28) Block One squares into a 2×14 matrix to make (1) Outer Side Border. Repeat to make a second Outer Side Border.

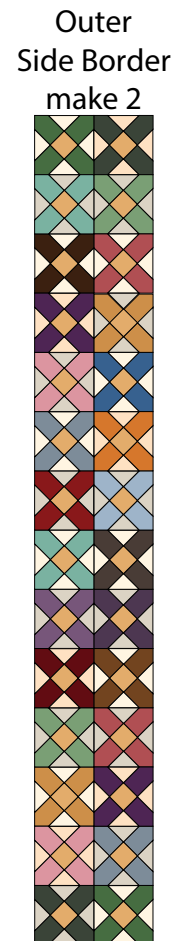


Fig. 10

17. Follow Figure 11 below and sew together (36) Block One squares into a 2 x 18 matrix to make the Outer Top Border. Repeat to make the Outer Bottom Border.

Quilt Top Assembly

(Follow the Quilt Layout while assembling the quilt top.)

18. Sew (1) Inner Side Border to each side of the Center Block. Sew the Inner Top Border and Inner Bottom Border to the top and to the bottom of the Center Block.

19. Center (1) 1 ½" x 42" Fabric B strip on (1) side of the Center Block and pin in place. Start sewing the strip a ¼" from the top edge of the block and stop a ¼" from the bottom edge. **DO NOT TRIM THE EXCESS.** Repeat with the opposite side.

20. Repeat Step 19 to sew (1) 1 ½" x 42" Fabric B strip to the top and to the bottom of the Center Block, making sure to stop and start ¼" away from each end of the block. To miter each corner, fold the Center Block on a diagonal, wrong side together. This should line up the strips from adjacent sides (Fig. 12).

21. Starting at the sewn seam (represented by the arrow in Figure 12), draw a 45-degree line to the edge of the fabric. Sew on the drawn line. Trim the excess fabric leaving a ¼" seam. Repeat this step with the remaining corners.

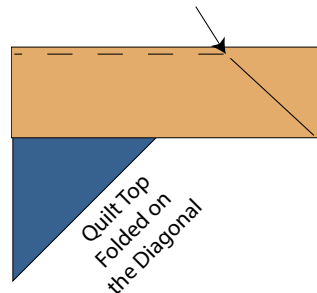


Fig. 12

22. Repeat Steps 19-21 using (4) 1 ½" x 44" Fabric E strips.

23. Repeat Steps 19-21 using (4) 1 ½" x 46" Fabric B strips.

24. Sew (1) Outer Side Border to each side of the Center Block. Sew the Outer Top Border and Outer Bottom Border to the top and to the bottom of the Center Block.

25. Repeat Steps 19-21 using (4) 3 ½" x 64" Fabric B strips.

26. Repeat Steps 19-21 using (4) 1 ½" x 66" Fabric E strips to make the quilt top.

27. Layer and quilt as desired.

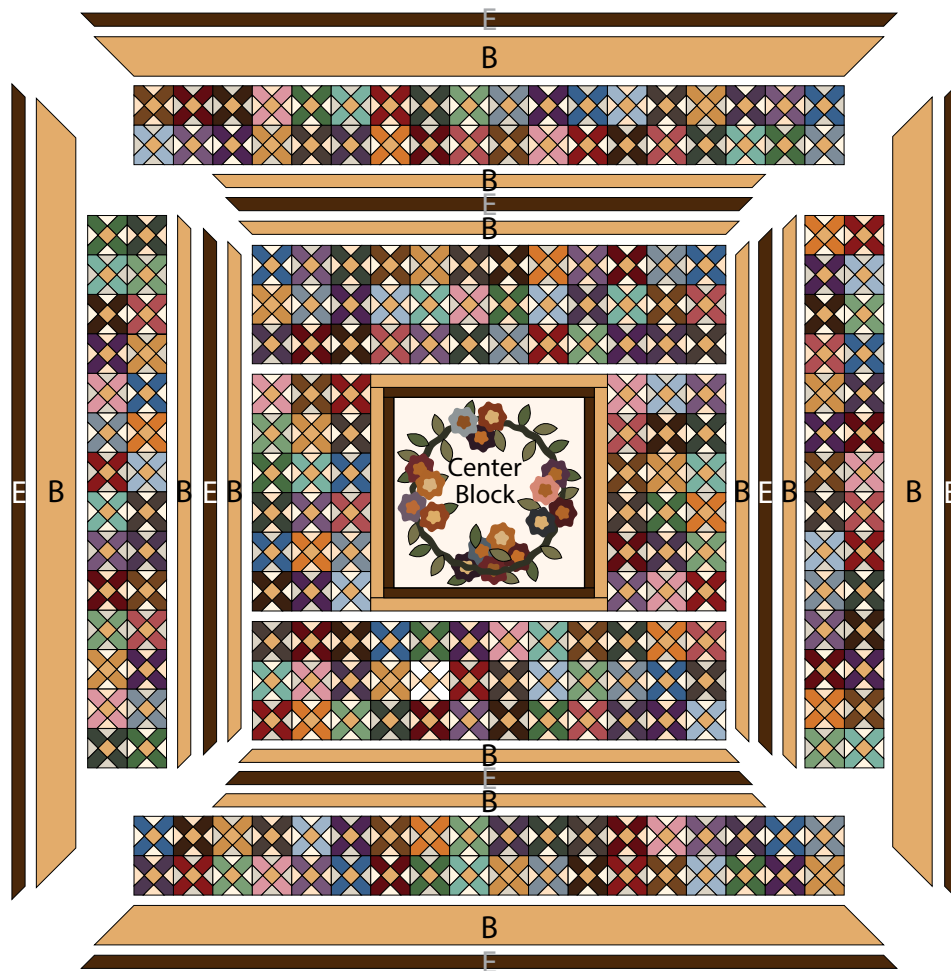
28. Sew the (7) 2 ½" x WOF Fabric E strips together, end to end with 45-degree seams, to make the binding. Fold this long strip in half lengthwise with wrong sides together and press.

29. Bind as desired.

Outer Top/Bottom Border
make 2

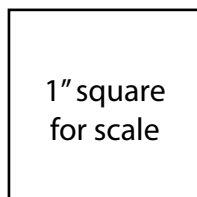


Fig. 11

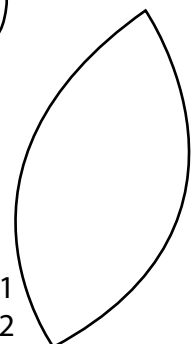


Quilt Layout

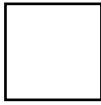
100% Revised Templates
for Fusible Applique



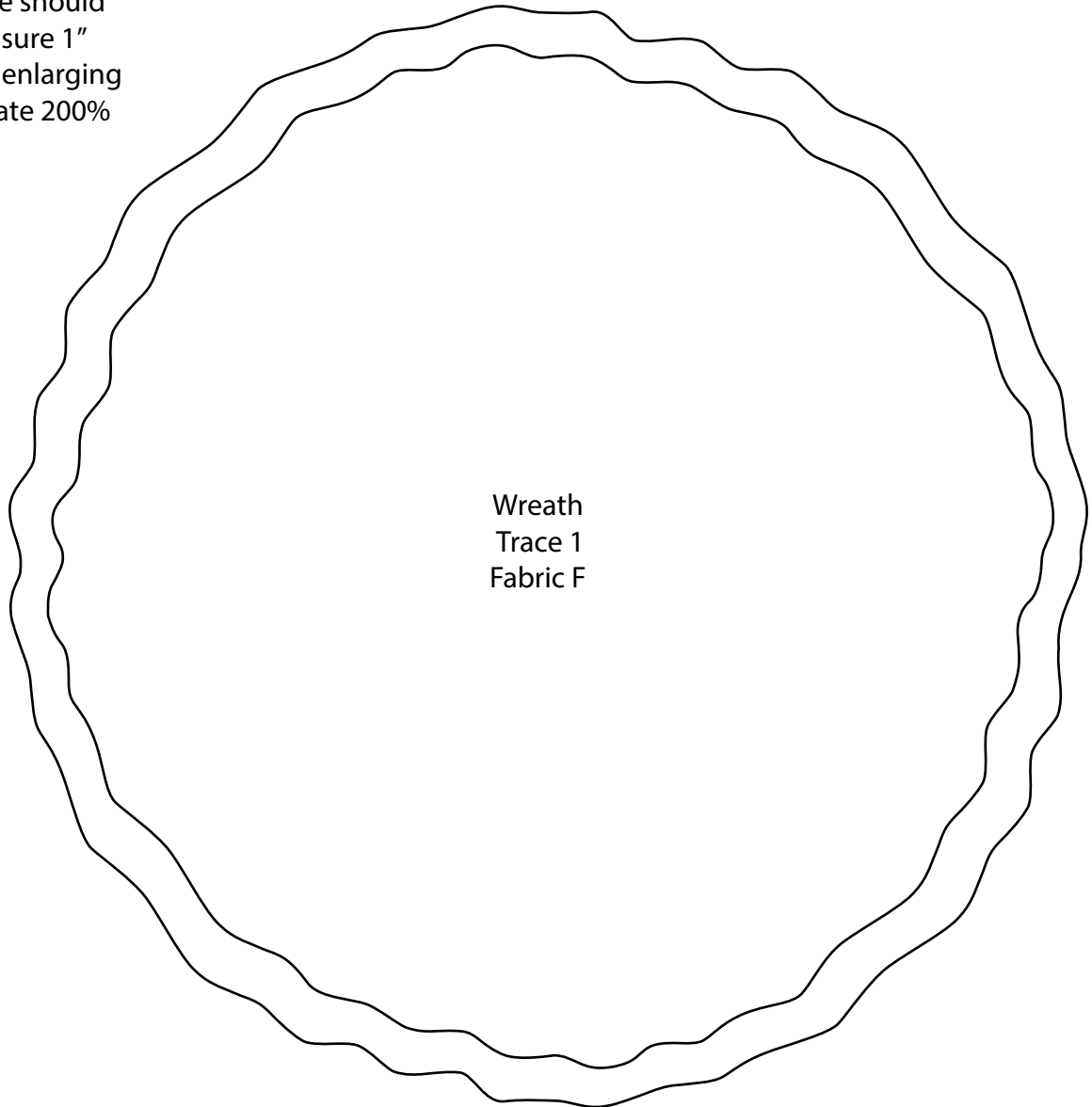
Leaf
Trace 25
(11) Fabric G-1
(14) Fabric G-2



ENLARGE TEMPLATE 200%



Square should
measure 1"
AFTER enlarging
template 200%



Wreath
Trace 1
Fabric F

*Every effort has been made to ensure that all projects are error free. All the information is presented in good faith, however no warranty can be given nor results guaranteed as we have no control over the execution of instructions. Therefore, we assume no responsibility for the use of this information or damages that may occur as a result. When errors are brought to our attention, we make every effort to correct and post a revision as soon as possible. Please make sure to check www.blankquilting.net for pattern updates prior to starting the project. We also recommend that you test the project prior to cutting for kits. Finally, all free projects are intended to remain free to you and are **not for resale**.*