



Tree Skirt

All Spruced Up!

by Satin Moon Designs



Quilt design by Denise Russell.

Quilt size: 57" x 57"

Skill Level: Advanced Beginner

Blank Quilting Corporation
49 West 37th Street ♦ New York, NY 10018
Tel: 800-294-9495 ♦ Fax: 212-679-4578
www.blankquilting.net



Free Project
NOT FOR RESALE

All Spruced Up! - Fabrics in the Collection



2772P-99 Christmas Panel 24"
Black



2767-41 Border Stripe
Ivory



2762-41 Holly
Ivory



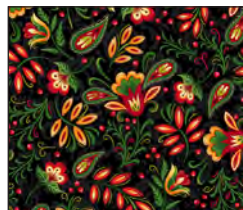
2763-88 Scroll
Red



2764-44 Ditsy Trees with
Ornaments - Gold



2764-99 Ditsy Trees
with Ornaments
Black



2765-99 Floral with
Paisley - Black



2766-99 Ornaments
Black



2768-99 Christmas
Trees - Black



2769-41 Chickadees
with Flowers - Ivory



2770-41 Tossed
Ornaments - Ivory

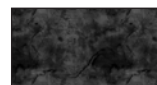


2771-88 Christmas
Floral - Red

Selected fabrics from the
Urban Legend Collection
by Tana Muller



7101-41
Ivory



7101-98
Black

All Spruced Up! - Tree Skirt

Materials

Yardages and cutting instructions are based on 42" of usable fabric width

1/4 yard 2766-99 Ornaments - Black
3/8 yard 2764-99 Ditsy Trees with Ornaments - Black
1/2 yard 2762-41 Holy - Ivory
1/2 yard 2763-88 Scroll - Red
1/2 yard 2764-44 Ditsy Trees with Ornaments - Gold
1/2 yard 2765-99 Floral with Paisley - Black
5/8 yard 2769-41 Chickadees with Flowers - Ivory
5/8 yard 2771-88 Christmas Floral - Red
7/8 yard 7101-98 Urban Legend - Black
2-1/8 yards 7101-41 Urban Legend - Ivory
3-3/4 yards 2768-99 Christmas Trees - Black for backing
65" x 65" piece of Air Lite® Colour Me 100% Cotton batting
Plastic for template
2 yards of black ribbon

Cut Fabrics

Note: All strips are cut across the width of the fabric (WOF) from selvage to selvage unless otherwise indicated.

From 2766-99 Ornaments – Black, cut:

*Two 3-3/8" x WOF strips. Sub-cut twenty 3-3/8" squares.

From 2764-99 Ditsy Trees with Ornaments – Black, cut:

*Six 2" x WOF strips for border 6.

From each, cut:

2762-41 Holy – Ivory

From 2763-88 Scroll – Red

*Four 2" x WOF strips.

*Two 3-3/8" x WOF strips. Sub-cut twenty 3-3/8" squares.

From 2764-44 Ditsy Trees with Ornaments – Gold, cut:

*Four 1-3/4" x WOF strips.

*Two 3-1/8" x WOF strips. Sub-cut sixteen 3-1/8" squares.

From 2765-99 Floral with Paisley – Black, cut:

*Four 2-1/2" x WOF strips.

*Two 3-1/8" x WOF strips. Sub-cut sixteen 3-1/8" squares.

From 2769-41 Chickadees with Flowers – Ivory, cut:

*Four 2" x WOF strips.

*Four 2-1/2" x WOF strips for border 4.

From 2771-88 Christmas Floral – Red, cut:

*One 18-1/2" x WOF strip. Sub-cut one 18-1/2" square.

From 7101-98 Urban Legend – Black, cut:

*One 2" x WOF strip. Sub-cut sixteen 2" squares.

*Ten 2-1/2" x WOF strips for binding.

From 7101-41 Urban Legend – Ivory, cut:

*One 2-3/4" x WOF strip. Sub-cut fifteen 2-3/4" squares.

*Two 3-1/8" x WOF strips. Sub-cut sixteen 3-1/8" squares and one 2-3/4" square (for a total of 16).

*Two 3-3/8" x WOF strips. Sub-cut twenty 3-3/8" squares.

*Two 4-1/4" x WOF strips. Sub-cut thirty-two 2" x 4-1/4" strips.

*Six 1-1/2" x WOF strips: two for border 1, four for border 3.

*Sixteen triangles A and sixteen triangles B with templates.

From 2768-99 Christmas Trees - Black, cut:

*Two 65" x WOF panels, pieced horizontally.

Assemble Blocks

Note: Measurements include 1/4" seam allowances. Sew with right sides together unless otherwise stated. If no direction is specified, press the seam toward the darker fabric.

1. Fold the 18-1/2" 2771-88 Christmas Floral – Red square twice to find its center. Unfold it, and trace a 5" or 6" square (this size depends on the diameter of the tree trunk) around the center point and cut on the outline to remove the center of the square. Set aside.

All Spruced Up! - Tree Skirt

- Draw a diagonal line from corner to corner on the wrong side of the 3-3/8" 7101-41 Urban Legend – Ivory squares. With right sides together, layer the marked Ivory squares atop the 3-3/8" 2766-99 Ornaments – Black squares. Stitch 1/4" from each side of the diagonal line, cut on the drawn line, press each unit open with seams toward the darker fabric, and trim dog ears. Make forty 3" Ivory/Black half-square triangles (HST).

Repeat this step with the 3-3/8" 2762-41 Holy – Ivory and 3-3/8" 2763-88 Scroll – Red squares to make forty 3" Holy – Ivory/Red HST. Noting fabric orientation, sew one HST of each type together to make forty rows, then join the rows together two-by-two to make twenty 5-1/2" blocks (*figure 1*).

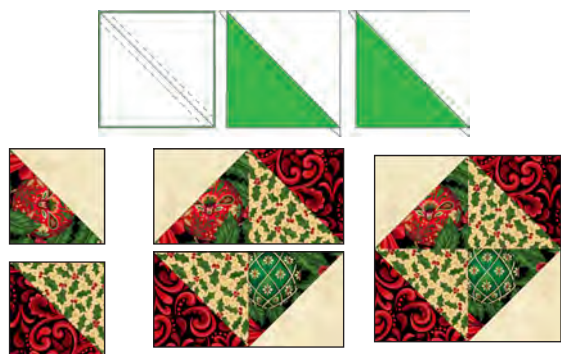


Figure 1 – Make (20) 5-1/2" blocks.

- Repeat Step 2 with the 3-1/8" squares of 7101-41 Urban Legend – Ivory, 2765-99 Floral with Paisley – Black, and 2764-44 Ditsy Trees with Ornaments – Gold to make sixteen 2-3/4" HST of each type. Noting fabric orientation and using the sixteen 2-3/4" 7101-41 Urban Legend – Ivory squares, assemble the 9-1/2" blocks in rows as shown below (*figure 2*).



Figure 2 – Make (4) 9-1/2" blocks.

- Make a strip set by sewing the following strips together, and in this order: one 2-1/2" 2765-99 Floral with Paisley – Black, one 2" 2763-88 Scroll – Red strip, one 2" 2762-41 Holy – Ivory strip, one 2" 2769-41 Chickadees with Flowers – Ivory strip, and one 1-3/4" 2764-44 Ditsy Trees with Ornaments – Gold strip. Press the seams in one direction. Repeat to make four strip sets.

Trace the tree shape on the plastic to make templates, including the lines in the middle of the shape. Cut on the outline. Align the template on the right side of one strip set and trace it four times using a fabric marker or pencil, taking care not to change the direction of the template – its highest point aligns with the Gold fabric. Cut on the outline using a ruler and a rotary cutter (*figure 3*). Repeat with the other strip sets to make sixteen trees.

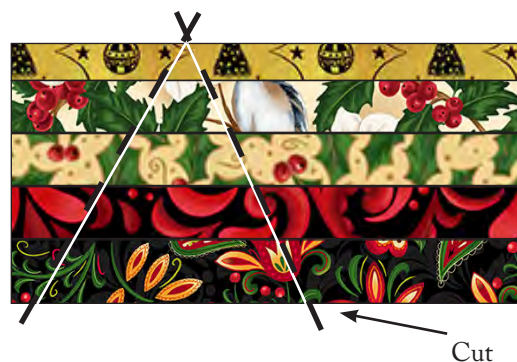


Figure 3 – Make 16.

- Make templates for the side triangles A and B as in Step 4. Trace each template sixteen times on the wrong side of the 7101-41 Urban Legend – Ivory fabric. Cut on the outline using a ruler and a rotary cutter. Following the diagram

below, sew the triangles to each side of the Step 4 tree units and press open (*figure 4*).

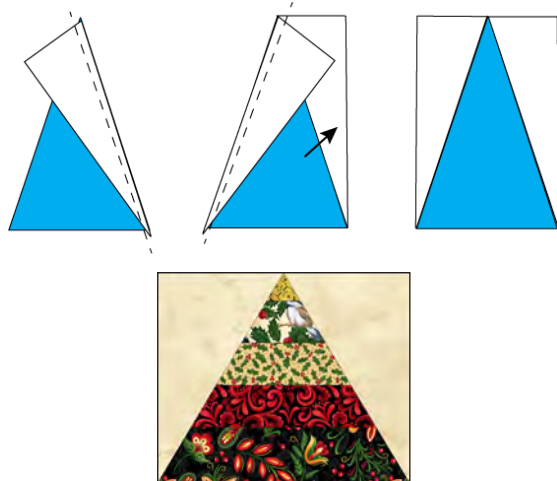


Figure 4

6. Sew a 2" x 4-1/4" 7101-41 Urban Legend – Ivory strip to opposite sides of a 2" 7101-98 Urban Legend – Black square. Press the seams toward the center. Repeat to make sixteen strips. Sew one strip to the bottom of the Step 5 trees (*figure 5*) to complete the 9-1/2" tree blocks. Press the seams toward the tree.



Figure 5 – Make (16) 9-1/2" blocks.

Assemble Quilt Top

7. For border 1, trim two 1-1/2" 7101-41 Urban Legend – Ivory border strips to 18-1/2". Sew one strip to each side of the Step 1 square and press the seams toward the border strips. Measure the width of the panel through the center. Trim two Ivory strips that length and sew one to the top and one to the bottom. Press the seams toward the borders. The quilt center measures 20-1/2" x 20-1/2" up to here.

8. For border 2 and referring to the quilt photo and diagram for block placement and orientation, arrange four Step 2 blocks for each side of the quilt. Sew blocks together and sew one border strip to each side of the quilt center. Press the seam toward quilt center. Repeat with six Step 2 blocks for each strip and sew one border strip to the top and one to the bottom of the quilt center.
9. For border 3, sew the four 1-1/2" 7101-41 Urban Legend – Ivory border strips together end to end using diagonal seams. Measure the vertical length of the quilt top through the center and cut two border strips that length. Sew one strip to each side of the quilt top. Measure the width of the quilt top through the center. Cut two border strips that length and sew one to the top and one to the bottom. Press the seams toward the borders.
10. Repeat Step 9 with the four 2-1/2" 2769-41 Chickadees with Flowers – Ivory strips to make and add border 4. The quilt measures 36-1/2" x 36-1/2" up to here.
11. For border 5 and referring to the quilt photo and diagram for block placement and orientation, arrange four Step 6 tree blocks for each side of the quilt. Sew blocks together and sew one border strip to each side of the quilt center. Press the seam toward quilt center. Repeat with four more tree blocks and two Step 3 blocks for each strip, and sew one border strip to the top and one to the bottom of the quilt center.
12. Repeat Step 9 with the six 2" 2764-99 Ditsy Trees with Ornaments – Black strips to make and add border 6.

Finishing

13. Create a quilt sandwich with the batting between the quilt top and the backing. Pin or baste layers together, mark the quilting design,

All Spruced Up! - Tree Skirt

Page 4

and quilt by hand or machine. When quilting is complete, remove pins or basting, and trim batting and backing even with raw edges of the quilt top.

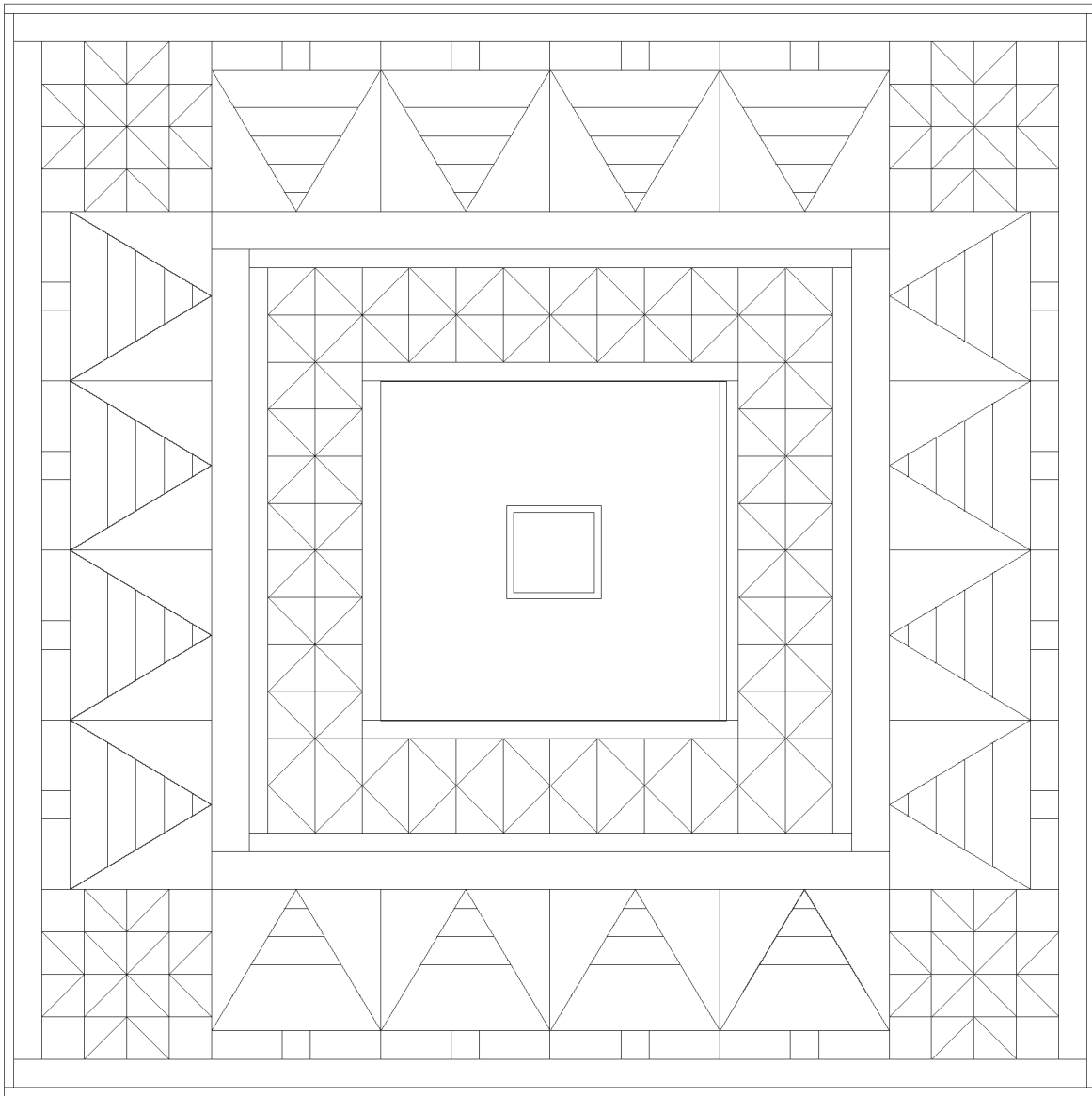
14. To cut the tree skirt opening, draw a straight line from the square at the center of the quilt to the center of one of the edges of the skirt. Cut along the drawn line.
15. Join two 2-1/2" 7101-98 Urban Legend – Black strips end to end. With wrong sides together, fold in half lengthwise and press. Ease the strip around the hollowed out square in the center and pin. Sew it to the edges of the square, fold the binding to the back of the quilt and stitch it in place by hand. Trim the ends of the strip even with the opening.
16. Join the remaining 2-1/2" Black binding strips together end to end using a diagonal seam to make one long strip. Fold in half lengthwise and press. Sew binding to the edges of the quilt, beginning at one corner of the center square and making sure the binding extends out about one inch. Miter the corners while stitching around the tree skirt. Fold binding to the back of the skirt and stitch it in place by hand to finish, turning in the ends of the binding at the circle.
17. Sew three 10" lengths of ribbon to each side of the opening, evenly spaced, to tie the tree skirt.



©2022 Blank Quilting Corporation

Every effort has been made to ensure that all projects are error free. All the information is presented in good faith; however, no warranty can be given nor results guaranteed as we have no control over the execution of instructions. Therefore, we assume no responsibility for the use of this information or damages that may occur as a result. When errors are brought to our attention, we make every effort to correct and post a revision as soon as possible. Please make sure to check www.blankquilting.net for pattern updates prior to starting the project. We also recommend that you test the project prior to cutting for kits. Finally, all free projects are intended to remain free to you and are not for resale.

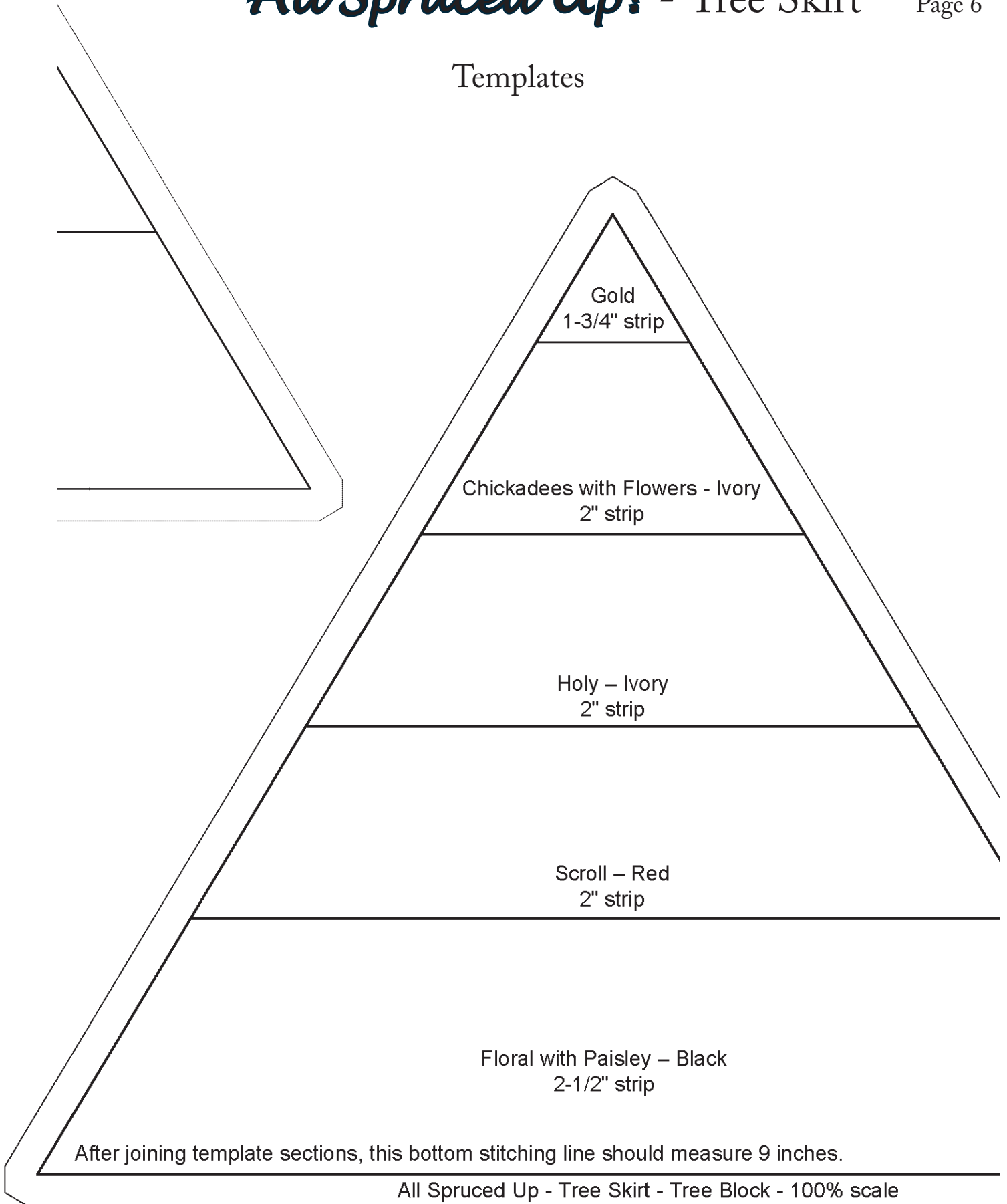
All Spruced Up! - Tree Skirt



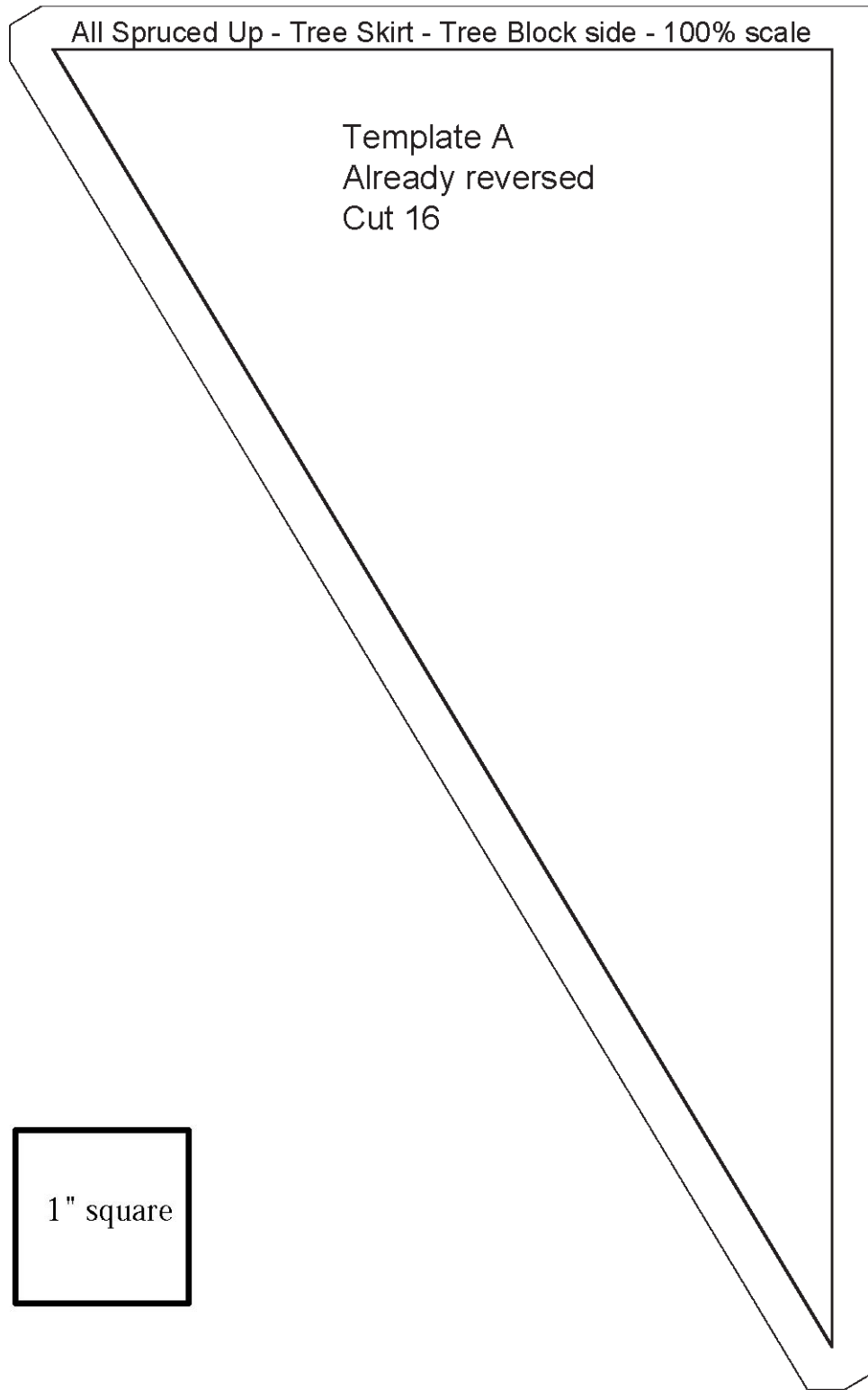
Tree Skirt Diagram

All Spruced Up! - Tree Skirt

Templates



All Spruced Up! - Tree Skirt



All Spruced Up! - Tree Skirt

