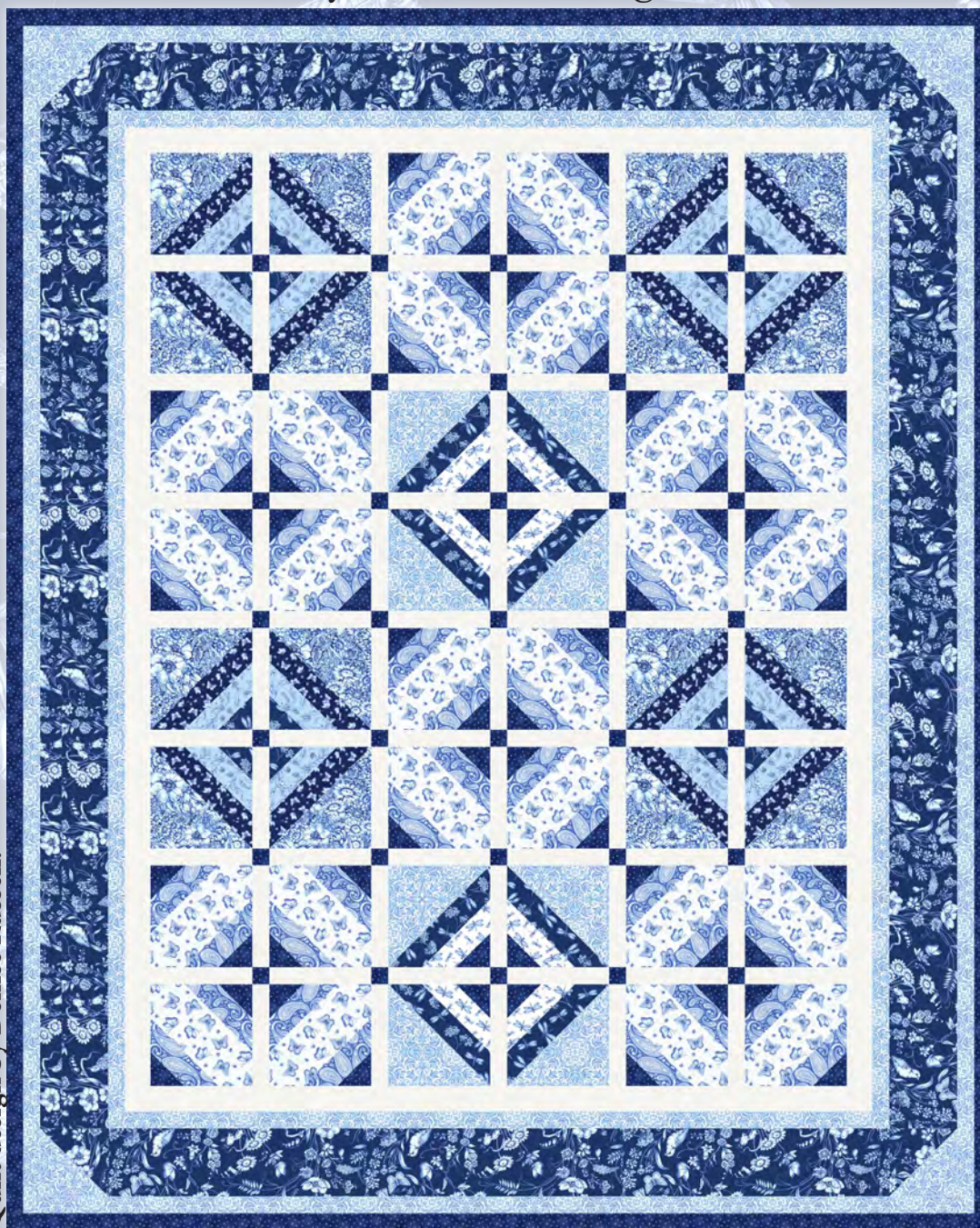




Quilt 1

Annabelle

by Satin Moon Designs



Quilt design by Denise Russell.

Quilt size: 57" x 71"

Skill Level: Advanced Beginner

Blank Quilting Corporation
49 West 37th Street ♦ New York, NY 10018
Tel: 800-294-9495 ♦ Fax: 212-679-4578
www.blankquilting.net

facebook

Free Project
NOT FOR RESALE

Annablue - Fabrics in the Collection



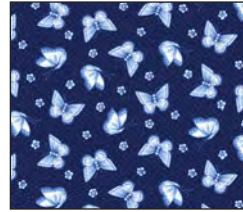
2747-77 Floral with
Bird Toile - Navy



2748-77 Large
Dragonflies with Flowers
Navy



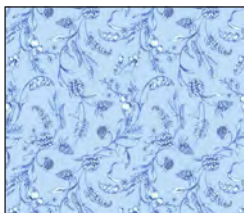
2749-77 Floral
Navy



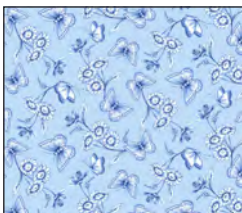
2750-77 Small
Butterflies - Navy



2751-75 Paisley
Med. Blue



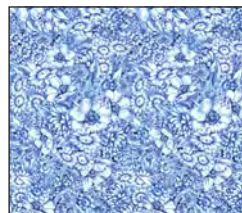
2752-70 Viny Floral
Lt. Blue



2753-70 Butterfly
with Floral - Lt. Blue



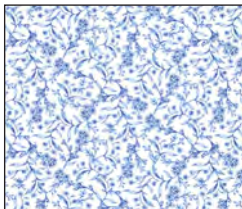
2754-70 Geometric
Lt. Blue



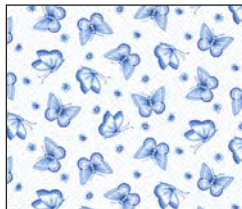
2755-75 Floral Collage
Med. Blue



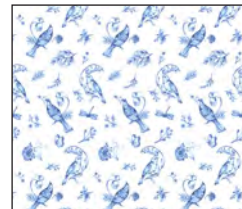
2756-01 Small
Dragonflies - White



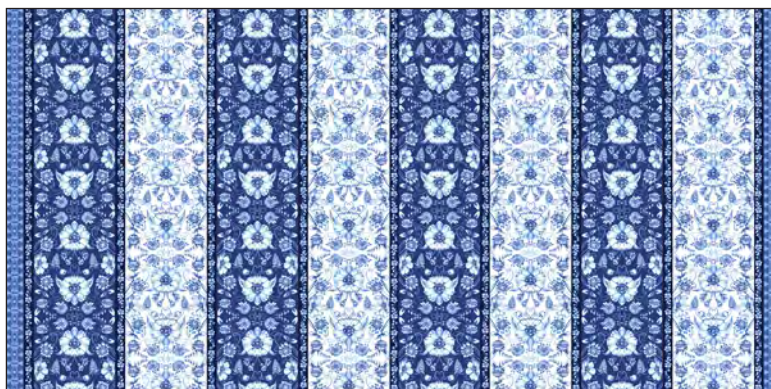
2757-01 Tiny Floral
Allover - White



2758-01 Butterfly with
Dots - White



2759-01 Birds
White



2760-75 Border Stripe
Med. Blue

Selected fabrics from the
Starlet Collection



6383
White



6383
Navy

Materials

Yardages and cutting instructions are based on 42" of usable fabric width.

1/4 yard 2756-01 Small Dragonflies - White
1/3 yard 2748-77 Large Dragonflies with Flowers - Navy
1/3 yard 2752-70 Viny Floral - Lt. Blue
1/2 yard 2750-77 Small Butterflies - Navy
1/2 yard 2755-75 Floral Collage - Med. Blue
7/8 yard 2751-75 Paisley - Med. Blue
7/8 yard 2754-70 Geometric - Lt. Blue
7/8 yard 2758-01 Butterflies with Dots - White
1 yard 6383 Starlet - White
1-1/8 yards 2747-77 Floral with Bird Toile - Navy
1-1/4 yards 6383 Starlet - Navy
3-3/4 yards 2749-77 Floral - Navy for backing
65" x 79" piece of Air Lite® Colour Me 100% Cotton batting

Cut Fabrics

Note: All strips are cut across the width of the fabric (WOF) from selvaige to selvaige unless otherwise indicated.

From 2756-01 Small Dragonflies – White, cut:

*One 4-1/2" x WOF strip. Sub-cut eight 4-1/2" squares.

From 2748-77 Large Dragonflies with Flowers – Navy, cut:

*One 2-1/2" x WOF strip. Sub-cut sixteen 2-1/2" squares.
*One 6-7/8" x WOF strip. Sub-cut four 6-7/8" squares.

From 2752-70 Viny Floral - Lt. Blue, cut:

*Two 4-1/2" x WOF strips. Sub-cut sixteen 4-1/2" squares.

From each, cut:

2750-77 Small Butterflies – Navy

2755-75 Floral Collage - Med. Blue

*Two 6-7/8" x WOF strips. Sub-cut eight 6-7/8" squares.

From 2751-75 Paisley - Med. Blue, cut:

*Six 4-1/2" x WOF strips. Sub-cut forty-eight 4-1/2" squares.

From 2754-70 Geometric - Lt. Blue, cut:

*One 6-7/8" x WOF strip. Sub-cut four 6-7/8" squares and two 4-7/8" squares.
*Thirteen 1-1/2" x WOF strips for borders 2 and 4.

From 2758-01 Butterflies with Dots – White, cut:

*Four 6-1/2" x WOF strips. Sub-cut twenty-four 6-1/2" squares.

From 6383 Starlet – White, cut:

*Three 6-1/2" x WOF strips. Sub-cut eighty-two 1-1/2" x 6-1/2" strips.
*Five 2" x WOF strips for border 1.

From 2747-77 Floral with Bird Toile – Navy, cut:

*One 4-7/8" x WOF strip. Sub-cut two 4-7/8" squares.
*Seven 4-1/2" x WOF strips for border 3.

From 6383 Starlet – Navy, cut:

*Two 1-1/2" x WOF strips. Sub-cut thirty-five 1-1/2" squares.
*Four 2-1/2" x WOF strips. Sub-cut fifty-six 2-1/2" squares.
*Seven 1-1/2" x WOF strips for border 5.
*Seven 2-1/2" x WOF strips for binding.

From 2749-77 Floral - Navy, cut:

*Two 65" x WOF panels, pieced horizontally.

Assemble Blocks

Notes: Measurements include 1/4" seam allowances. Sew with right sides together unless otherwise stated. If no direction is specified, press the seam toward the darker fabric.

1. Draw a diagonal line from corner to corner on the wrong side of eight 6-7/8" 2755-75 Floral Collage - Med. Blue squares. With right sides together, layer the marked Floral squares atop the 6-7/8" 2750-77 Small Butterflies – Navy squares. Stitch 1/4" from each side of the diagonal line, cut on the drawn line, press each unit open with seams toward the darker fabric, and

trim dog ears (*figure 1*). Make sixteen 6-1/2" half-square triangles (HST).

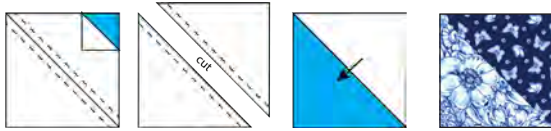


Figure 1 – Make (16) 6-1/2" units.

2. Draw a diagonal line from corner to corner on the wrong side of the 4-1/2" 2752-70 Viny Floral - Lt. Blue squares. With right sides together, place one marked Lt. Blue square on the Navy corner of one Step 1 unit and stitch on the drawn line. Trim seam allowance to 1/4" and press open [Stitch and Flip technique – SNF]. Similarly, sew one 2-1/2" 2748-77 Large Dragonflies with Flowers – Navy square to the same corner (*figure 2*). Repeat with all the Step 1 units to make sixteen 6-1/2" blocks.

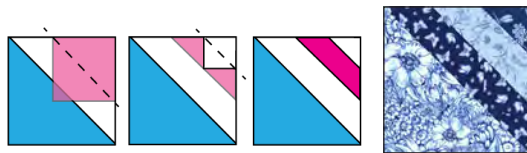


Figure 2 – Make (16) 6-1/2" blocks.

3. Repeat Steps 1 and 2 with the 6-7/8" squares of 2754-70 Geometric - Lt. Blue and 2748-77 Large Dragonflies with Flowers – Navy, the 4-1/2" 2756-01 Small Dragonflies – White squares, and the 2-1/2" 6383 Starlet – Navy squares to make eight 6-1/2" blocks (*figure 3*).



Figure 3 – Make (8) 6-1/2" blocks.

4. Working with the same Step 2 SNF technique, sew a 4-1/2" 2751-75 Paisley - Med. Blue square to opposite corners of a 6-1/2" 2758-01 Butterflies with Dots – White square, then add the 2-1/2" 6383 Starlet – Navy squares to

the same corners to make twenty-four 6-1/2" blocks (*figure 4*).

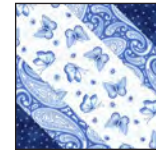


Figure 4 – Make (24) 6-1/2" blocks.

5. Repeat Step 1 with the 4-7/8" 2754-70 Geometric - Lt. Blue and 2747-77 Floral with Bird Toile – Navy squares to make four 4-1/2" blocks (*figure 5*).



Figure 5 – Make (4) 4-1/2" blocks.

Assemble Quilt Top

6. Referring to the quilt photo for block placement and orientation, lay out six blocks and five 1-1/2" x 6-1/2" 6383 Starlet – White sashing strips in eight rows, and join the blocks and sashing strips together in each row. Press the seams toward the sashing.
7. To make the horizontal sashing rows, sew together six 1-1/2" x 6-1/2" White sashing strips and five 1-1/2" 6383 Starlet – Navy corner-stone squares. Repeat to make seven sashing strips. Press the seams toward the sashing.
8. Matching adjacent seams, sew block rows and horizontal sashing strips together. Press the seams in one direction.
9. For border 1, join the five 2" 6383 Starlet – White strips together end to end using diagonal seams. Measure the vertical length of the quilt top through the center and cut two border strips that length. Sew one strip to each side of the quilt top and press the seams toward the border strips. Measure the width of the quilt

top through the center. Cut two border strips that length and sew one to the top and one to the bottom. Press the seams toward the borders.

10. Repeat Step 9 with six 1-1/2" 2754-70 Geometric - Lt. Blue strips to make and add border 2.
11. For border 3, sew the seven 4-1/2" 2747-77 Floral with Bird Toile – Navy strips together end to end using diagonal seams. Measure the width of the quilt top through the center. Cut two border strips that length, sew a Step 5 block to each end of the strips to make the top and the bottom border strips, press seams away from squares, and set them aside. Measure the vertical length of the quilt top through the center and cut two border strips that length. Sew one strip to each side of the quilt top. Press seams toward borders. Finally, sew the top and the bottom strips to the quilt center. Press the seams toward the borders.

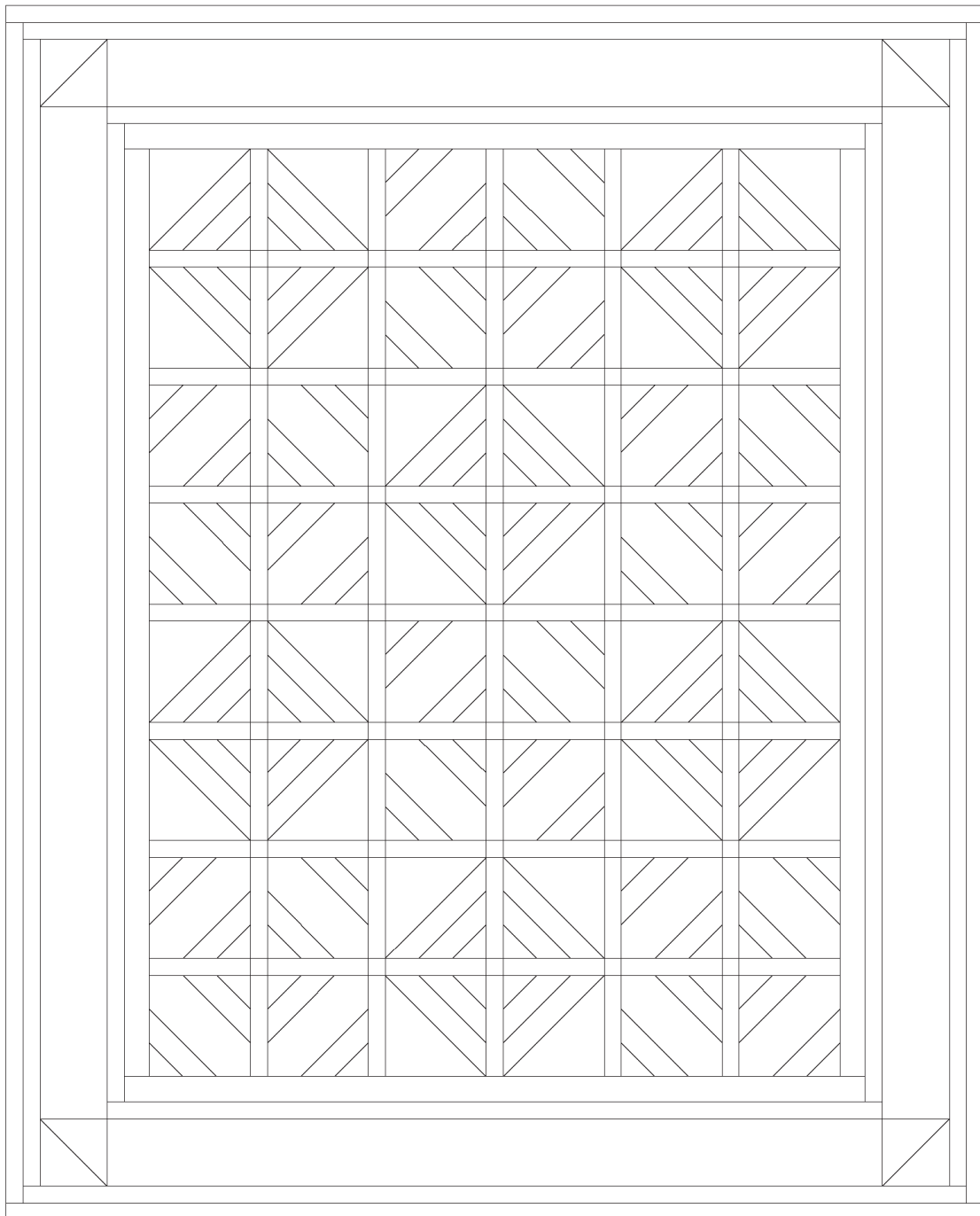
12. Repeat Step 9 with seven 1-1/2" 2754-70 Geometric - Lt. Blue strips to make and add border 4.

13. Repeat Step 9 with seven 1-1/2" 6383 Starlet – Navy strips to make and add border 5.

Finishing

14. Create a quilt sandwich with the batting between the quilt top and the backing. Pin or baste layers together, mark the quilting design, and quilt by hand or machine. When quilting is complete, remove pins or basting, and trim batting and backing even with raw edges of the quilt top.

15. Join the seven 2-1/2" 6383 Starlet – Navy binding strips together end to end using a diagonal seam to make one long strip. With wrong sides together, fold in half lengthwise and press. Sew binding to the edges of the quilt, mitering corners, and overlapping ends. Fold binding to the back of the quilt and stitch it in place by hand to finish.



Quilt Diagram