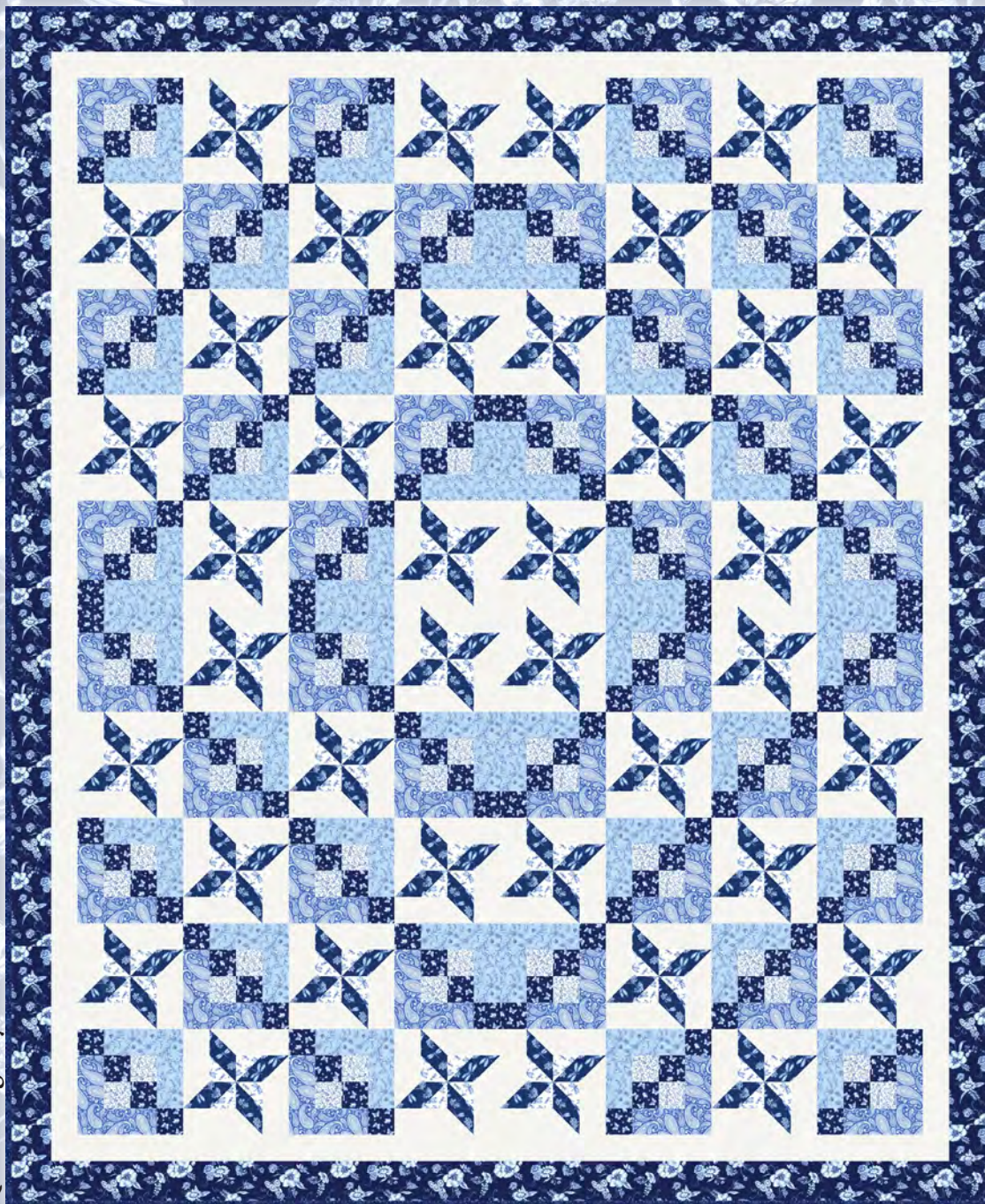




Quilt 2

Annabelle

by Satin Moon Designs



Quilt design by Denise Russell.

Quilt size: 74" x 90"

Skill Level: Advanced Beginner

Blank Quilting Corporation
49 West 37th Street ♦ New York, NY 10018
Tel: 800-294-9495 ♦ Fax: 212-679-4578
www.blankquilting.net

facebook

Free Project
NOT FOR RESALE

Annablue - Fabrics in the Collection



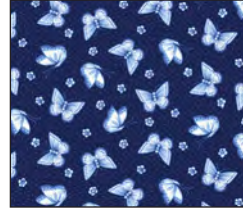
2747-77 Floral with
Bird Toile - Navy



2748-77 Large
Dragonflies with Flowers
Navy



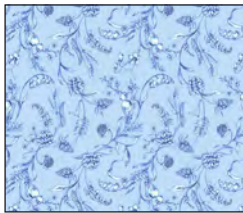
2749-77 Floral
Navy



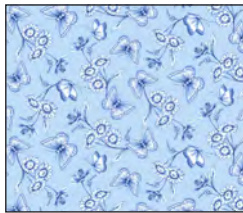
2750-77 Small
Butterflies - Navy



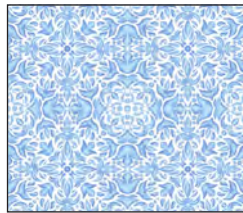
2751-75 Paisley
Med. Blue



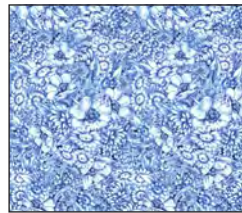
2752-70 Viny Floral
Lt. Blue



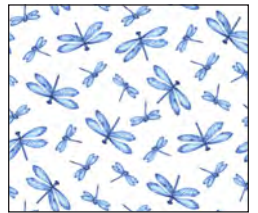
2753-70 Butterfly
with Floral - Lt. Blue



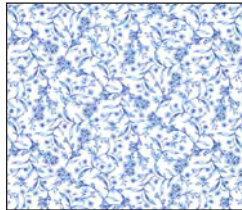
2754-70 Geometric
Lt. Blue



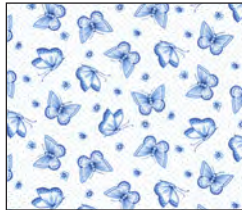
2755-75 Floral Collage
Med. Blue



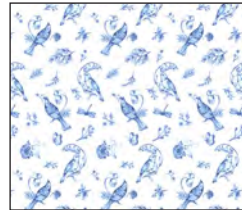
2756-01 Small
Dragonflies - White



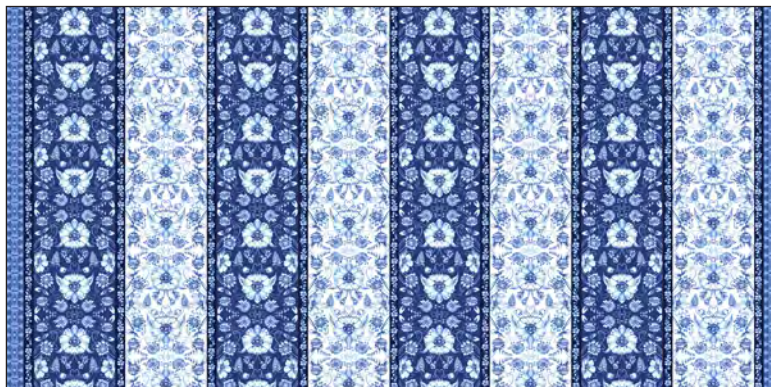
2757-01 Tiny Floral
Allover - White



2758-01 Butterfly with
Dots - White

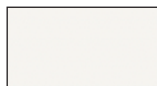


2759-01 Birds
White



2760-75 Border Stripe
Med. Blue

Selected fabrics from the
Starlet Collection



6383
White



6383
Navy

Materials

Yardages and cutting instructions are based on 42" of usable fabric width.

1/2 yard 2757-01 Tiny Floral Allover - White
 5/8 yard 2756-01 Small Dragonflies - White
 3/4 yard 6383 Starlet - Navy
 7/8 yard 2750-77 Small Butterflies - Navy
 7/8 yard 2749-77 Floral - Navy
 1 yard 2751-75 Paisley - Med. Blue
 1 yard 2752-70 Viny Floral - Lt. Blue
 1-1/8 yards 2748-77 Large Dragonflies with Flowers - Navy
 2-1/2 yards 6383 Starlet - White
 5-5/8 yards 2753-70 Butterfly with Floral - Lt. Blue for backing
 82" x 98" piece of Air Lite® Colour Me 100% Cotton batting

Cut Fabrics

Note: All strips are cut across the width of the fabric (WOF) from selvage to selvage unless otherwise indicated.

From 2757-01 Tiny Floral Allover – White, cut:

*Five 2-1/2" x WOF strips.

From 2756-01 Small Dragonflies – White, cut:

*Six 2-7/8" x WOF strips. Sub-cut eighty 2-7/8" squares.

From 6383 Starlet – Navy, cut:

*Nine 2-1/2" x WOF strips for binding.

From 2750-77 Small Butterflies – Navy, cut:

*Ten 2-1/2" x WOF strips. Save five for strip sets. Sub-cut eighty 2-1/2" squares.

From 2749-77 Floral – Navy, cut:

*Eight 3-1/2" x WOF strips for border 2.

From each, cut:

2751-75 Paisley - Med. Blue

2752-70 Viny Floral - Lt. Blue

*Three 4-1/2" x WOF strips. Sub-cut forty 2-1/2" x 4-1/2" rectangles.

*Three 6-1/2" x WOF strips. Sub-cut forty 2-1/2" x 6-1/2" rectangles.

From 2748-77 Large Dragonflies with Flowers – Navy, cut:

*Twelve 2-7/8" x WOF strips. Sub-cut (160) 2-7/8" squares.

From 6383 Starlet – White, cut:

*Six 2-7/8" x WOF strips. Sub-cut eighty 2-7/8" squares.

*Ten 4-1/2" x WOF strips. Sub-cut (160) 2-1/2" x 4-1/2" rectangles.

*Eight 2-1/2" x WOF strips for border 1.

From 2753-70 Butterfly with Floral - Lt. Blue, cut:

*Two 98" x WOF panels, pieced vertically.

Assemble Blocks

Notes: Measurements include 1/4" seam allowances. Sew with right sides together unless otherwise stated. If no direction is specified, press the seam toward the darker fabric.

1. Sew a 2-1/2" 2750-77 Small Butterflies – Navy strip to a 2-1/2" 2757-01 Tiny Floral Allover – White strip. Repeat to make five strip sets. Do not press seams yet. Cross-cut strip sets into eighty 2-1/2" segments. Sew the segments two by two to make forty 4-1/2" units (*figure 1*). Press the seams open.

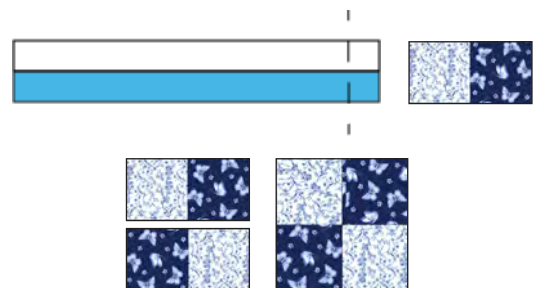


Figure 1 – Make (40) 4-1/2" units.

2. Noting fabric orientation, sew a 2-1/2" x 4-1/2" 2751-75 Paisley - Med. Blue rectangle to the top and a 2-1/2" x 4-1/2" 2752-70 Viny Floral - Lt. Blue rectangle to the bottom of the Step 1 units. Sew a 2-1/2" 2750-77 Small

Butterflies – Navy square to one end of the 2-1/2" x 6-1/2" Paisley and Floral rectangles. Press the seams toward the square. Sew the Paisley strip to the left and the Viny strip to the right of all the units to complete the 8-1/2" blocks (*figure 2*). Press the seams in one direction.

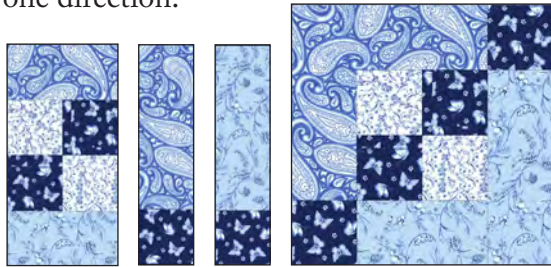


Figure 2 – Make (40) 8-1/2" blocks.

3. Draw a diagonal line from corner to corner on the wrong side of eight 2-7/8" 2756-01 Small Dragonflies – White squares. With right sides together, layer the marked White squares atop the 2-7/8" 2748-77 Large Dragonflies with Flowers – Navy squares. Stitch 1/4" from each side of the diagonal line, cut on the drawn line, press each unit open with seams toward the darker fabric, and trim dog ears. Make (160) 2-1/2" half-square triangles (HST).

Repeat this step with the 2-7/8" 6383 Starlet – White and 2-7/8" 2748-77 Large Dragonflies with Flowers – Navy squares to make (160) 2-1/2" HST (*figure 3*).

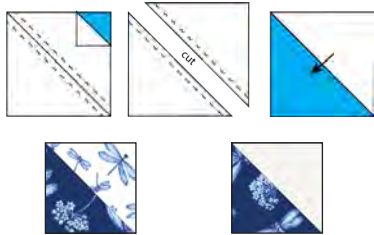


Figure 3 – Make (160) 2-1/2" units of each type.

4. Noting fabric orientation, sew the Step 3 X and Y units together two by two to make eighty strips and press the seams in one direction. Sew a 2-1/2" x 4-1/2" 6383 Starlet – White rectangle to the top of each strip. Sew

four units together as shown below, then repeat to make forty 8-1/2" blocks (*figure 4*). Press the seams open.

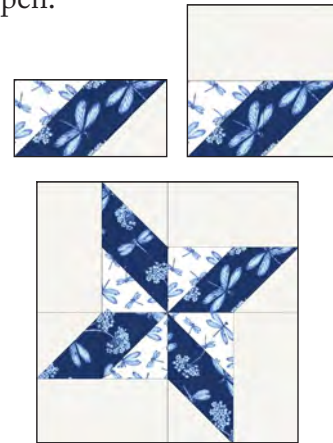


Figure 4 – Make (40) 8-1/2" blocks.

Assemble Quilt Top

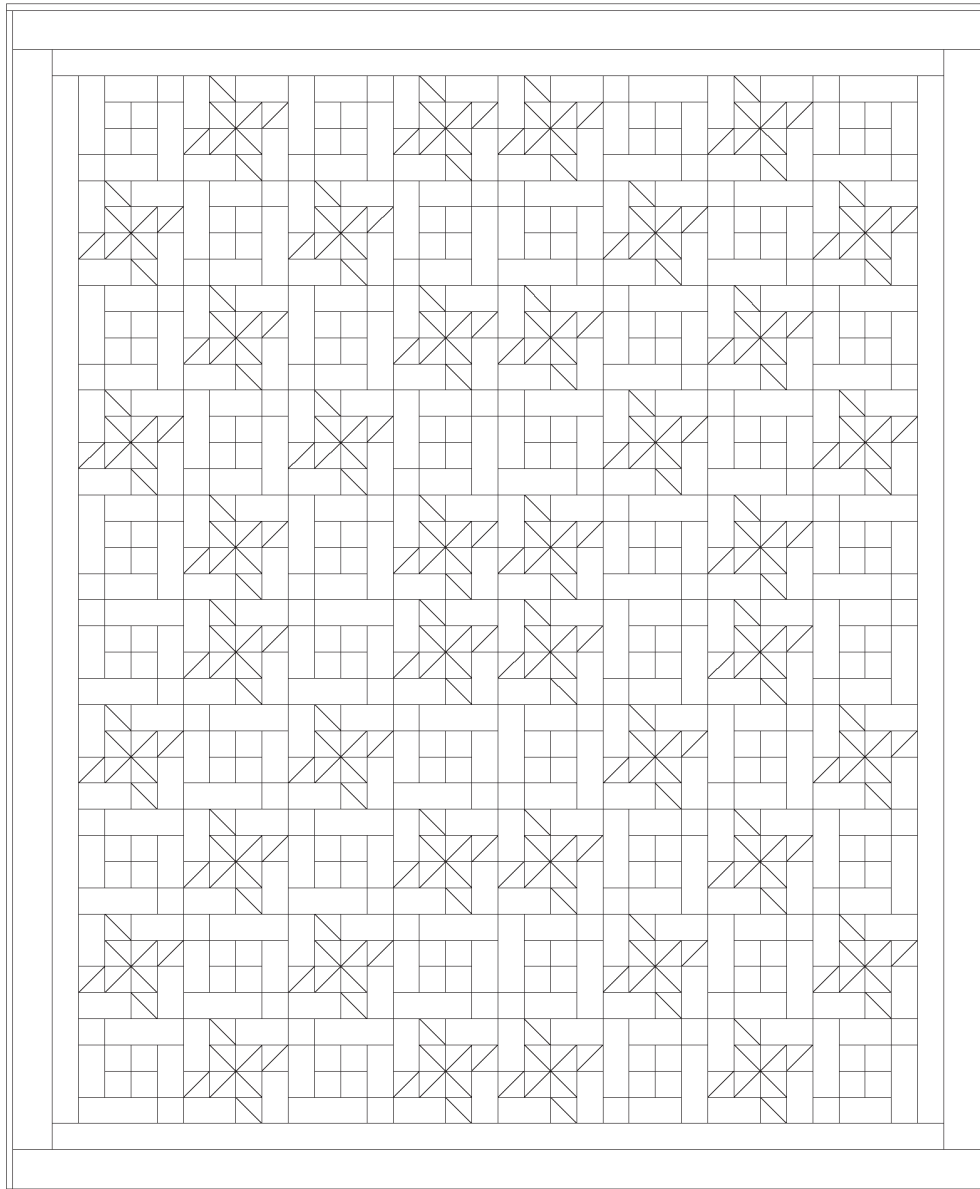
5. Referring to the quilt photo for block placement and orientation, lay out eight blocks in ten rows, and join the blocks together in each row. Press the seams in one direction.
6. Matching adjacent seams, sew block rows together. Press the seams in one direction.
7. For border 1, join the eight 2-1/2" 6383 Starlet – White strips together end to end using diagonal seams. Measure the vertical length of the quilt top through the center and cut two border strips that length. Sew one strip to each side of the quilt top and press the seams toward the border strips. Measure the width of the quilt top through the center. Cut two border strips that length and sew one to the top and one to the bottom. Press the seams toward the borders.
8. Repeat Step 7 with the eight 3-1/2" 2749-77 Floral – Navy strips to make and add border 2.

Finishing

9. Create a quilt sandwich with the batting between the quilt top and the backing. Pin or baste layers together, mark the quilting design,

and quilt by hand or machine. When quilting is complete, remove pins or basting, and trim batting and backing even with raw edges of the quilt top.

10. Join the nine 2-1/2" 6383 Starlet – Navy binding strips together end to end using a diagonal seam to make one long strip. With wrong sides together, fold in half lengthwise and press. Sew binding to the edges of the quilt, mitering corners, and overlapping ends. Fold binding to the back of the quilt and stitch it in place by hand to finish.



Quilt Diagram

©2022 Blank Quilting Corporation

Every effort has been made to ensure that all projects are error free. All the information is presented in good faith; however, no warranty can be given nor results guaranteed as we have no control over the execution of instructions. Therefore, we assume no responsibility for the use of this information or damages that may occur as a result. When errors are brought to our attention, we make every effort to correct and post a revision as soon as possible. Please make sure to check www.blankquilting.net for pattern updates prior to starting the project. We also recommend that you test the project prior to cutting for kits. Finally, all free projects are intended to remain free to you and are not for resale.