



DRESSED UP ON THE FARM

by Myroslava Voloschuk



Quilt size: 59" x 59" (1.49m x 1.49m) Skill Level: Advanced Beginner

FUN FARM ANIMALS QUILT

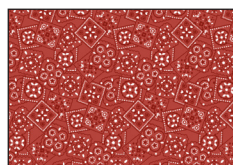
Designed and sold by Alison Vandertang
quiltwoman.com

FUN FARM ANIMALS QUILT

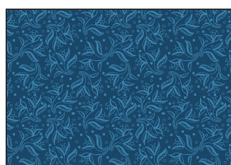
Fabric Requirements

| | | | Yards | Meters |
|------|----------|-----------------------------|-------|--------|
| A | 3097-77* | Foulard - Navy | 1-2/3 | 1.52 |
| B | 3098-95 | Farm Animal Collage - Gray | 1 | 0.91 |
| C | 3100-11 | Farm Scenic - Lt. Blue | 2/3 | 0.61 |
| D | 3101-01 | Tossed Farm Animals - White | 1 | 0.91 |
| E | 3103-99 | Ducks - Black | 1/2 | 0.46 |
| F | 3095-88 | Red Bandana - Red | 1-1/4 | 1.14 |
| Back | 3098-95 | Farm Animal Collage - Gray | 3-1/2 | 3.20 |

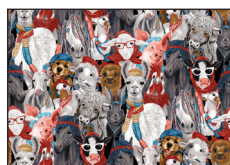
*Includes binding.



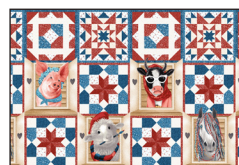
3095-88 Red Bandana
Red



3097-77 Foulard
Navy



3098-95 Farm Animal
Collage - Gray



3099-41 Patchwork
Ivory



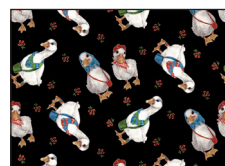
3100-11 Farm Scenic
Lt. Blue



3101-01 Tossed Farm
Animals - White



3102-41 Chicks
Ivory



3103-99 Ducks
Black



3096-41 Farm Border Stripe
Ivory



3104P-88 Farm Panel - 24"
Red

Blank Quilting Corporation

49 West 37th Street ♦ New York, NY 10018 ♦ Tel: 800-294-9495 ♦ Fax: 212-679-4578 ♦ www.blankquilting.net