

Beachy Keen

by Janelle Falke

Quilt design by Denise Russell.



Quilt size: 36" x 16."

Skill Level: Beginner.

Blank Quilting Corporation
49 West 37th Street ♦ New York, NY 10018
Tel: 800-294-9495 ♦ Fax: 212-679-4578
www.blankquilting.net

facebook

Free Project
NOT FOR RESALE

Beachy Keen - Fabrics in the Collection



2582P-30 Beach Scene 24" Panel - Sand



2570-11 Beach Scene - Lt. Blue



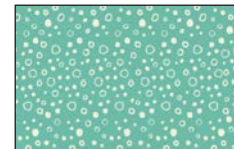
2571-30 Tossed Beach Items - Sand



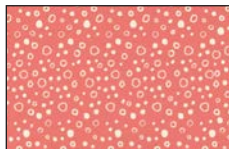
2572-30 Starfish and Shells - Sand



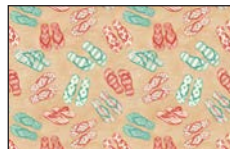
2573-11 Tossed Boats - Lt. Blue



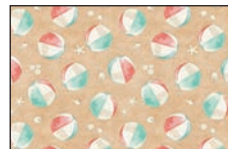
2574-67 Bubbles Teal



2574-80 Bubbles Coral



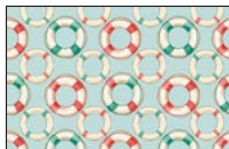
2575-30 Tossed Flip-flops - Sand



2576-30 Tossed Beach Balls - Sand



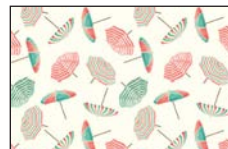
2577-88 Coral Red



2578-11 Life Preserver Rings - Lt. Blue



2579-30 Footprints in Sand - Sand



2580-41 Tossed Beach Umbrellas - Ivory



2581-11 Seagulls Lt. Blue

Selected fabric from the Starlet Collection



6383 Ivory

Beachy Keen - Bench Pillow

Materials

Yardages and cutting instructions are based on 42" of usable fabric width

1/8 yard 2572-30 Starfish and Shells - Sand
1/4 yard 2576-30 Tossed Beach Balls - Sand
1/4 yard 2580-41 Tossed Beach Umbrellas - Ivory
1/4 yard 2574-67 Bubbles - Teal
1/3 yard 2578-11 Life Preserver Rings - Lt. Blue
1/3 yard 6383 Starlet - Ivory
3/8 yard 2574-80 Bubbles - Coral
7/8 yard 2579-30 Footprints in Sand - Sand
for backing
20" x 40" piece of Air Lite® Colour Me 100%
Cotton batting
16" x 36" pillow form

Cut Fabrics

Note: All strips are cut across the width of the fabric (WOF) from selvage to selvage unless otherwise indicated.

From 2572-30 Starfish and Shells - Sand:

*Cut one 2-1/2" x WOF strip for border 3.

From 2576-30 Tossed Beach Balls - Sand:

*Cut one 4-1/2" square.

From 2580-41 Tossed Beach Umbrellas - Ivory:

*Cut two 4-1/2" squares.

From 2574-67 Bubbles - Teal:

*Cut one 2-1/2" x WOF strip. Sub-cut eight 2-1/2" squares and eight 1-1/2" squares.

*Cut two 1-1/2" x WOF strips for border 2 (top and bottom).

*Cut one 2" x WOF strip for border 2 (sides).

From 2578-11 Life Preserver Rings - Lt. Blue:

*Cut one 2-1/2" x WOF strip for border 1 (sides).

*Cut two 3" x WOF strips for border 1 (top and bottom).

From 6383 Starlet - Ivory:

*Cut two 1-1/2" x WOF strips. Sub-cut twelve 1-1/2" squares and twelve 1-1/2" x 2-1/2" strips.

*Cut one 4-1/2" x WOF strip. Sub-cut twelve

2-1/2" x 4-1/2" rectangles.

From 2574-80 Bubbles - Coral:

*Cut one 1-1/2" x WOF strip. Sub-cut four 1-1/2" squares.

*Cut one 2-1/2" x WOF strip. Sub-cut sixteen 2-1/2" squares.

*Cut three 2-1/2" x WOF strips for binding.

From 2579-30 Footprints in Sand - Sand:

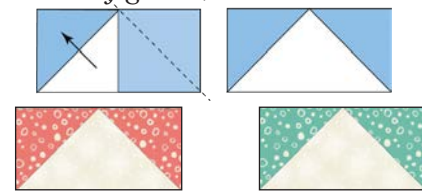
*Cut two 20" x 26" rectangles.

Assemble Blocks

Note: Measurements include 1/4" seam allowances. Sew with right sides together unless otherwise stated. If no direction is specified, press the seam toward the darker fabric.

1. Draw a diagonal line from corner to corner on the wrong side of the 2-1/2" 2574-80 Bubbles - Coral squares. Noting the line orientation and with right sides together, layer a marked Coral square on the left short end of a 2-1/2" x 4-1/2" 6383 Starlet - Ivory rectangle and stitch on the drawn line. Trim 1/4" away from the seam line and press open. Similarly, stitch another Coral square to the opposite end of the rectangle. Repeat to make eight 2-1/2" x 4-1/2" flying-geese units.

Repeat this step with the 2-1/2" 2574-67 Bubbles - Teal squares and the 2-1/2" x 4-1/2" 6383 Starlet - Ivory rectangles to make four 2-1/2" x 4-1/2" flying-geese units. (figure 1).

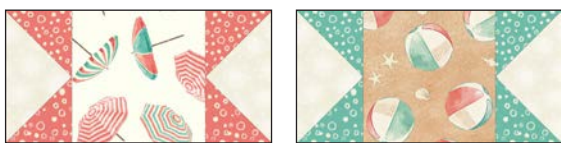


Make 8 units X.

Make 4 units Y.

Figure 1

2. Sew one Step 1 unit X to opposite sides of the 4-1/2" 2580-41 Tossed Beach Umbrellas - Ivory squares to make two center rows. Repeat with the Units Y and the 4-1/2" 2576-30 Tossed Beach Balls - Sand square (figure 2, next page). Press the seams toward the center.



Make 2.

Make 1.

Figure 2

3. Sew a 1-1/2" 2574-80 Bubbles – Coral square to a 1-1/2" 6383 Starlet – Ivory. Press the seam toward the darker fabric. Make four 1-1/2" x 2-1/2" units. Repeat with the remaining 1-1/2" Ivory squares and the 1-1/2" 2574-67 Bubbles – Teal squares to make eight units. Noting fabric orientation, sew a 1-1/2" x 2-1/2" 6383 Starlet – Ivory to the top of each unit so that two Coral units (four for the Teal) feature the dark fabric on the right, and on the other two Coral units (four for the Teal), the darker fabric is on the left, as shown (figure 3). Press the seams toward the Ivory strip. The units measure 2-1/2" x 2-1/2".



Make 2 of each.

Make 4 of each.

Figure 3

4. Noting orientation, sew a Step 3 unit to opposite sides of the remaining Step 1 flying geese to make six top/bottom [TB] rows. Press the seams away from the center. Matching flying geese fabrics, sew one TB row to the top and one to the bottom of the Step 2 center rows to make three 8-1/2" star blocks (figure 4). Press the seams in one direction.



Make 2.

Make 1.

Figure 4 – Make (3) 8-1/2" blocks.

Assemble Quilt Top

5. Sew the star blocks together and press the seams in one direction.

6. For border 1, cut two 2-1/2" x 8-1/2" rectangles from the 2-1/2" 2578-11 Life Preserver Rings - Lt. Blue strip and sew one to each side of the quilt center. Press the seams toward the borders. Measure the width of the quilt top through the center. Trim the two 3" 2578-11 Life Preserver Rings - Lt. Blue strips that length and sew one to the top and one to the bottom. Press the seams toward the borders.

7. For border 2, measure the vertical length of the quilt top through the center and cut the 2" 2574-67 Bubbles – Teal strip into two rectangles that length. Sew one rectangle to each side of the quilt top and press the seams toward the border strips. Measure the width of the quilt top through the center. Trim the two 1-1/2" 2574-67 Bubbles – Teal strips that length and sew one to the top and one to the bottom. Press the seams toward the borders.

8. For border 3 (sides only), measure the vertical length of the quilt top through the center and cut the 2-1/2" 2572-30 Starfish and Shells – Sand strip into two rectangles that length. Sew one rectangle to each side of the quilt top and press the seams toward the border strips.

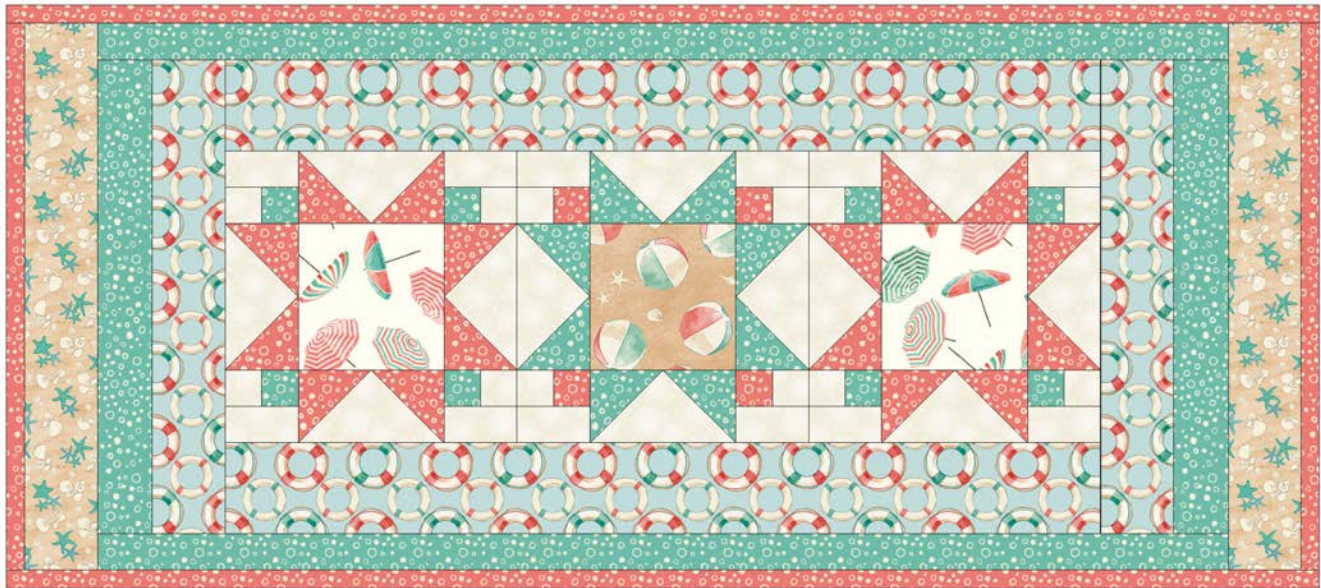
9. If the pillow will be quilted, lay the pillow top on the batting and pin or baste layers together. Mark the quilting design and quilt by hand or machine. When quilting is complete, remove pins or basting, and trim even the batting and pillow top raw edges.

10. Sew a double 1/4" hem on one 20" edge of the backing rectangles. Place the pillow top right side down on the table. Lay one hemmed backing rectangle right side up on top, matching bottom raw edges. Lay the second backing rectangle on top, matching the top raw edges. Hemmed edges of backing pieces will overlap. Pin all around and sew the layers together with a 1/4" seam. Trim edges.

Beachy Keen- Bench Pillow

11. Join the three 2-1/2" 2574-80 Bubbles – Coral binding strips together end to end using a diagonal seam to make one long strip. Fold in half lengthwise and press. Sew binding to the edges of the pillow, mitering corners, and overlapping ends. Fold binding to the back of the quilt and stitch it in place by hand to finish.

12. Insert pillow form through the overlapped back opening to finish.



Bench Pillow Diagram

©2022 Blank Quilting Corporation

Every effort has been made to ensure that all projects are error free. All the information is presented in good faith; however, no warranty can be given nor results guaranteed as we have no control over the execution of instructions. Therefore, we assume no responsibility for the use of this information or damages that may occur as a result. When errors are brought to our attention, we make every effort to correct and post a revision as soon as possible. Please make sure to check www.blankquilting.net for pattern updates prior to starting the project. We also recommend that you test the project prior to cutting for kits. Finally, all free projects are intended to remain free to you and are not for resale.