

Beachy Keen

by Janelle Falke



Quilt design by Denise Russell.

Quilt size: 53" x 71."

Skill Level: Intermediate.

Blank Quilting Corporation
49 West 37th Street ♦ New York, NY 10018
Tel: 800-294-9495 ♦ Fax: 212-679-4578
www.blankquilting.net

facebook

Free Project
NOT FOR RESALE

Beachy Keen - Fabrics in the Collection



2582P-30 Beach Scene 24" Panel - Sand



2570-11 Beach Scene - Lt. Blue



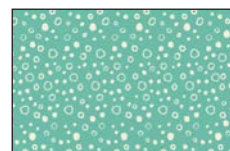
2571-30 Tossed
Beach Items - Sand



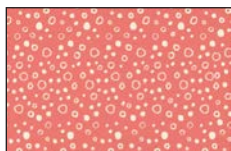
2572-30 Starfish and
Shells - Sand



2573-11 Tossed
Boats - Lt. Blue



2574-67 Bubbles
Teal



2574-80 Bubbles
Coral



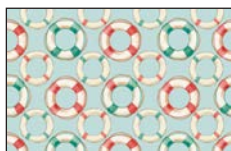
2575-30 Tossed
Flip-flops - Sand



2576-30 Tossed
Beach Balls - Sand



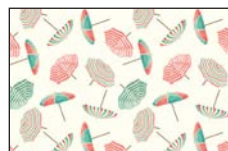
2577-88 Coral
Red



2578-11 Life Preserver
Rings - Lt. Blue



2579-30 Footprints
in Sand - Sand



2580-41 Tossed Beach
Umbrellas - Ivory



2581-11 Seagulls
Lt. Blue

Selected fabric from the Starlet Collection



6383
Ivory

Materials

Yardages and cutting instructions are based on 42" of usable fabric width

One 2582P-30 Beach Scene Panel - Sand
1/8 yard 2572-30 Starfish and Shells - Sand
1/4 yard 2580-41 Tossed Beach Umbrellas - Ivory
3/8 yard 2571-30 Tossed Beach Items - Sand
3/8 yard 2577-88 Coral - Red
3/8 yard 2578-11 Life Preserver Rings - Lt. Blue
2/3 yard 2576-30 Tossed Beach Balls - Sand
7/8 yard 2574-67 Bubbles - Teal
7/8 yard 2574-80 Bubbles - Coral
2 yards 6383 Starlet - Ivory
3-5/8 yards 2573-11 Tossed Boats - Lt. Blue
for backing
61" x 80" piece of Air Lite® Colour Me 100%
Cotton batting

Cut Fabrics

Note: All strips are cut across the width of the fabric (WOF) from selvage to selvage unless otherwise indicated.

From 2582P-30 Beach Scene Panel – Sand:

*Trim panel to 23-1/2" x 43-1/2."

From 2572-30 Starfish and Shells – Sand:

*Cut one 1-5/8" x WOF strip. Sub-cut twenty 1-5/8" squares.

From 2580-41 Tossed Beach Umbrellas – Ivory:

*Cut one 5" x WOF strip. Sub-cut five 5" squares.

From each:

2577-88 Coral - Red

2571-30 Tossed Beach Items – Sand

*Cut two 5-1/2" x WOF strips. Sub-cut eighteen 3" x 5-1/2" rectangles.

From 2578-11 Life Preserver Rings - Lt. Blue:

*Cut two 5-1/2" x WOF strips. Sub-cut eighteen 3" x 5-1/2" rectangles and five 5" squares.

From 2576-30 Tossed Beach Balls – Sand:

*Cut six 3-1/2" x WOF strips for border 3.

From 2574-67 Bubbles – Teal:

*Cut one 1-5/8" x WOF strip. Sub-cut twenty 1-5/8" squares.

*Cut three 2-3/4" x WOF strips. Sub-cut forty 2-3/4" squares.

*Cut two 5-1/2" x WOF strips. Sub-cut eighteen 3" x 5-1/2" rectangles.

*Cut four 1-1/2" x WOF strips for border 1.

From 2574-80 Bubbles – Coral:

*Cut three 2-3/4" x WOF strips. Sub-cut forty 2-3/4" squares.

*Cut seven 2-1/2" x WOF strips for binding.

From 6383 Starlet – Ivory:

*Cut two 1-5/8" x WOF strips. Sub-cut forty 1-5/8" squares.

*Cut two 2-3/4" x WOF strips. Sub-cut forty 1-5/8" x 2-3/4" strips.

*Cut eleven 3" x WOF strips. Sub-cut (144) 3" squares.

*Cut three 5" x WOF strips. Sub-cut forty 2-3/4" x 5" rectangles.

*Cut six 1-1/2" x WOF strips for border 2.

Assemble Blocks

Note: Measurements include 1/4" seam allowances. Sew with right sides together unless otherwise stated. If no direction is specified, press the seam toward the darker fabric.

1. Draw a diagonal line from corner to corner on the wrong side of the 3" 6383 Starlet – Ivory squares. Noting the line orientation and with right sides together, layer a marked Ivory square on the left short end of a 3" x 5-1/2" 2571-30 Tossed Beach Items – Sand rectangle and stitch on the drawn line. Trim 1/4" away from the seam line and press open. Similarly, stitch another Ivory square to the opposite end of the rectangle. Repeat to make eighteen 3" x 5-1/2" flying-geese units.

Repeat this step with the remaining 3" Ivory squares and the 3" x 5-1/2" 2578-11 Life Preserver Rings - Lt. Blue, 2577-88 Coral – Red, and 2574-67 Bubbles – Teal rectangles (*figure 1, next page*).

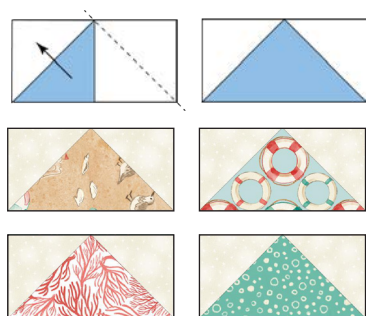


Figure 1 – Make (18) 3" x 5-1/2" of each type.

2. Repeat Step 1 with the 2-3/4" 2574-80 Bubbles – Coral squares, the 2-3/4" 2574-67 Bubbles – Teal, and the 2-3/4" x 5" 6383 Starlet – Ivory to make twenty 2-3/4" x 5" flying-geese units of each type (*figure 2*).



Figure 2 – Make (20) 2-3/4" x 5" of each.

3. Sew one Step 2 Unit X to opposite sides of the 5" 2578-11 Life Preserver Rings - Lt. Blue squares to make five center rows. Repeat with the Units Y and the 5" 2580-41 Tossed Beach Umbrellas – Ivory (*figure 3*). Press the seams toward the center.

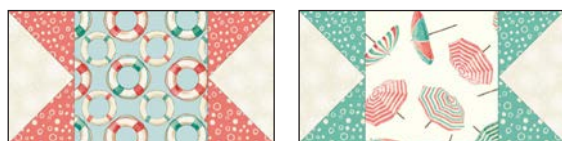


Figure 3 – Make 5 of each.

4. Sew a 1-5/8" 2574-67 Bubbles – Teal square to a 1-5/8" 6383 Starlet – Ivory. Press the seam toward the darker fabric. Make twenty 1-5/8" x 2-3/4" units. Repeat with the remaining 1-5/8" Ivory squares and the 1-5/8" 2572-30 Starfish and Shells - Sand squares. Noting fabric orientation, sew a 1-5/8" x 2-3/4" 6383 Starlet – Ivory to the top of each unit so that ten units feature the dark fabric on the right, and on the other ten, the darker fabric is on the left, as shown (*figure 4*). Press the seams toward the Ivory strip. The units measure 2-3/4" x 2-3/4."



Figure 4 – Make (10) 2-3/4" x 2-3/4" of each.

5. Noting orientation, sew a Step 4 unit to opposite sides of the remaining Step 2 flying geese to make twenty top/bottom [TB] rows. Press the seams away from the center. Matching flying geese fabrics, sew one TB row to the top and one to the bottom of the Step 3 center rows to make five 9-1/2" star blocks of each type (*figure 5*). Press the seams in one direction.

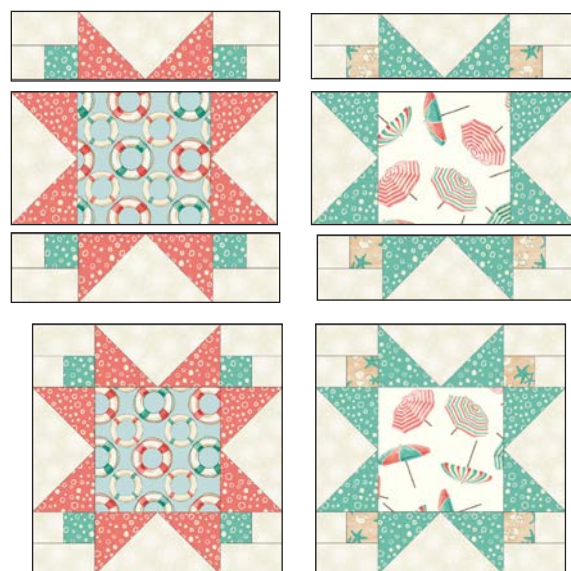


Figure 5 – Make (5) 9-1/2" blocks of each.

Assemble Quilt Top

6. For border 1, trim two 1-1/2" 2574-67 Bubbles – Teal border strips to 23-1/2". Sew one strip to each side of the 2582P-30 Beach Scene Panel – Sand and press the seams toward the border strips. Measure the width of the panel through the center. Cut two Teal strips that length and sew one to the top and one to the bottom. Press the seams toward the borders.

7. Arrange the Step 1 units in four rows of eighteen units each. Sew them together in each row and press the seams in one direction. Set aside.

8. Arrange the Step 5 star blocks in two rows of five blocks each. Sew them together in each row and press the seams open.

9. Noting row orientation, sew one Step 7 row to the top and one to the bottom of one Step 8 row. Press the seams in one direction. Repeat with the remaining Step 7 and Step 8 rows. Referring to the quilt photo for orientation, sew one set of block rows to the top and one to the bottom of the Step 6 panel.

10. For border 2, join the 1-1/2" 6383 Starlet – Ivory strips together end to end using diagonal seams. Measure the vertical length of the quilt top through the center and cut two border strips that length. Sew one strip to each side of the quilt top and press the seams toward the border strips. Measure the width of the quilt top through the center. Cut two border strips that length and sew one to the top and one to the bottom. Press the seams toward the borders.

11. Repeat Step 10 with the six 3-1/2" 2576-30 Tossed Beach Balls – Sand strips to make and add border 3.

Finishing

12. Create a quilt sandwich with the batting between the quilt top and the backing. Pin or baste layers together, mark the quilting design, and quilt by hand or machine. When quilting is complete, remove pins or basting, and trim batting and backing even with raw edges of the quilt top.

13. Join the seven 2-1/2" 2574-80 Bubbles – Coral binding strips together end to end using a diagonal seam to make one long strip. Fold in half lengthwise and press. Sew binding to the edges of the quilt, mitering corners, and overlapping ends. Fold binding to the back of the quilt and stitch it in place by hand to finish.

Beachy Keen - Quilt 1

Page 4



Quilt Diagram