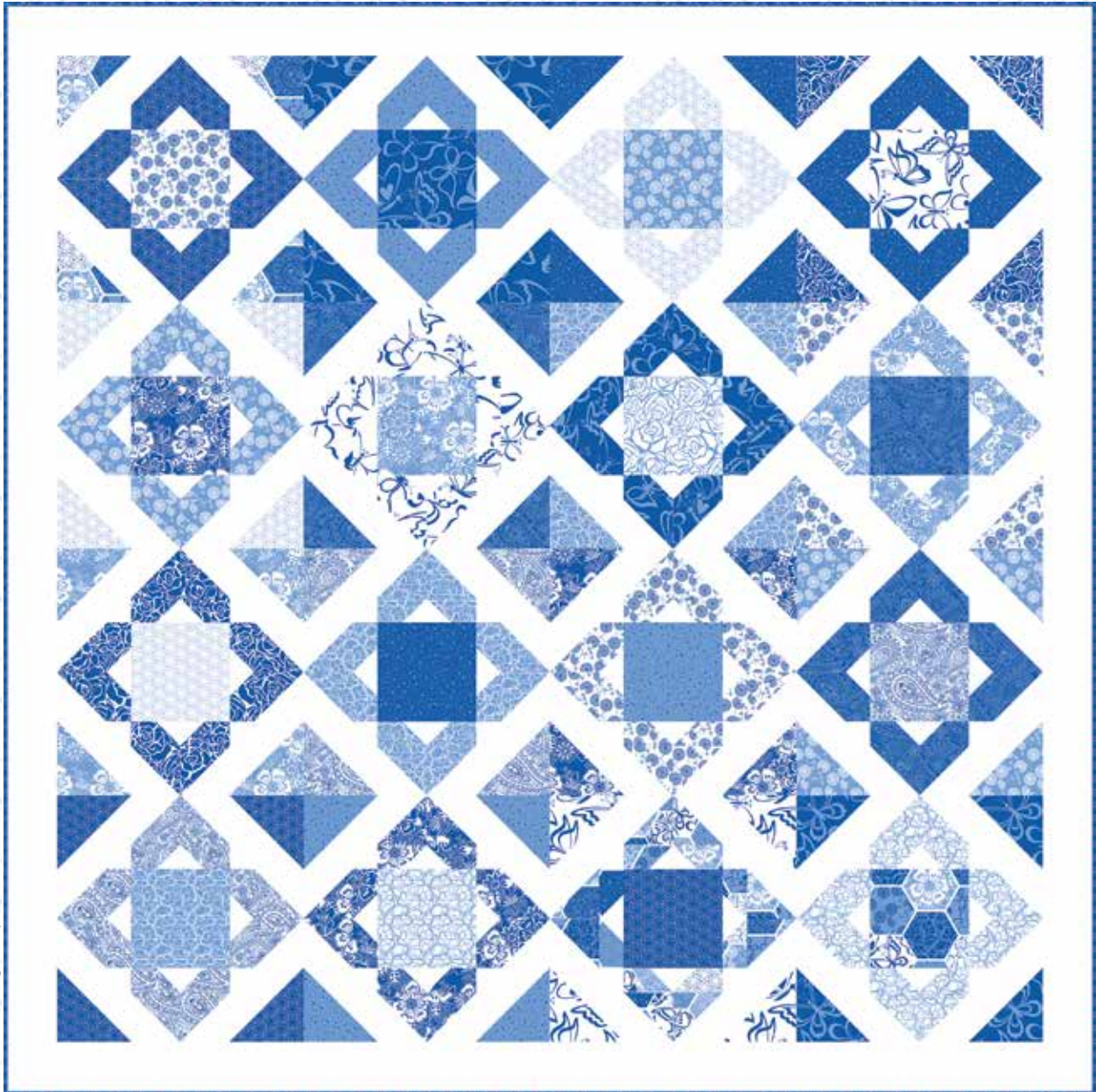


BLUE BAYOU

A Free Project Sheet
NOT FOR RESALE

Quilt 1

Quilt Design by Heidi Pridemore



Skill Level: Advanced Beginner

facebook



Finished Quilt Size: 66" x 66"
49 West 37th Street, 14th floor, New York, NY 10018
Toll Free: 800-294-9495
fax: 212-679-4578
www.blankquilting.net

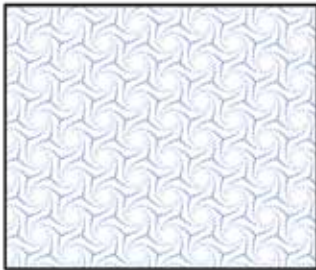
Please check our website for pattern updates before starting this project.

BLUE BAYOU

Quilt 1

Finished Quilt Size: 66" x 66"

Fabrics in the Blue Bayou Collection



Dotted Swirl - White
1142-07



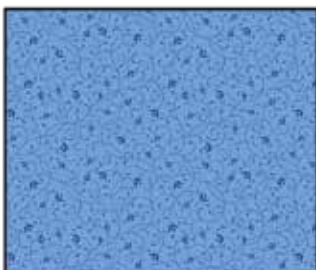
Dotted Swirl - Navy
1142-77



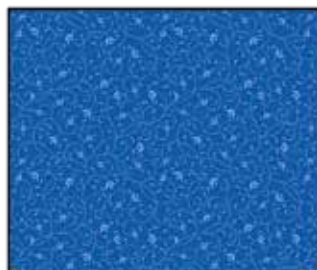
Dandelion - White
1143-07



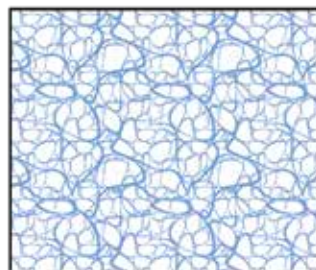
Dandelion - Medium Blue
1143-75



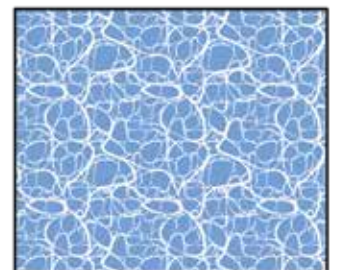
Scroll - Medium Blue
1144-75



Scroll - Navy
1144-77



Scribble - White
1145-07



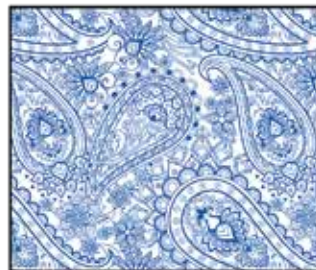
Scribble - Medium Blue
1145-75



Butterfly - White
1146-07



Butterfly - Navy
1146-77



Paisley - White
1147-07



Paisley - Navy
1147-77



Floral - Medium Blue
1148-75



Floral - Navy
1148-77



Roses - White
1149-07



Roses - Navy
1149-77



Roses - Medium Blue
1150-75

Select Fabric
from the
Eclipse Collection



White
3955-White

Materials

1 bundle	Blue Bayou Fat Quarter Bundle (17 Fat ¼'s) (A)	
3 yards	Eclipse - White (B)	3955-White
⅔ yard	Dotted Swirl - Navy (C)	1142-77*
4 ¼ yards	Hexis - Medium Blue (Backing)	1150-75

*Includes binding

Cutting Instructions

Please note: All strips are cut across the width of fabric (WOF) from selvage to selvage edge unless otherwise noted.

**From the Blue Bayou Fat Quarter Bundle (A),
select (16) Fat Quarters:**

- From each fat quarter, cut: (1) 6 1/2" square
(2) 5 3/8" squares
(4) 3 7/8" squares
(8) 2" x 3 1/2" strips.

From the Eclipse - White (B), cut:

- (5) 5 3/8" x WOF strips. Sub-cut (32) 5 3/8" squares.
- (7) 3 7/8" x WOF strips. Sub-cut (64) 3 7/8" squares.
- (4) 3 1/2" x WOF strips. Sew the strips together end to end with diagonal seams and cut (2) 3 1/2" x 66 1/2" strips.
- (3) 3 1/2" x WOF strips. Sew the strips together end to end with diagonal seams and cut (2) 3 1/2" x 60 1/2" strips.
- (7) 2" x WOF strips. Sub-cut (128) 2" squares.

From the Dotted Swirl - Navy (C), cut:

- (7) 2 1/2" x WOF strips for the binding.

From the Hexis - Medium Blue (Backing), cut:

- (2) 74" x WOF strips for the backing. Sew the strips together and trim to make the 74" x 74" back.

Block Assembly

1. Place (1) 5 $\frac{3}{8}$ " Fabric B square on top of (1) 5 $\frac{3}{8}$ " Fabric A1 square, right sides together. Draw a line across the diagonal of the top square (Fig. 1). Sew $\frac{1}{4}$ " away from each side of the drawn diagonal line (Fig. 1). Cut the (2) squares apart on the drawn diagonal line (Fig. 2) to make (2) half-square triangles. Trim the half-square triangles to measure 5" square to make (2) Unit 1 squares (Fig. 3). Repeat to make (4) Unit 1 squares total.

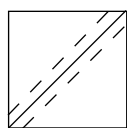


Fig. 1

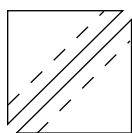


Fig. 2

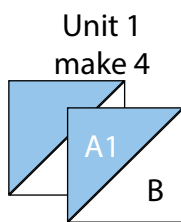


Fig. 3

2. Repeat Step 1 and refer to Figure 4 for fabric identification and placement to use (4) 3 7/8" Fabric B squares and (4) 3 7/8" Fabric A2 squares to make (8) 3 1/2" Unit 2 squares.

Unit 2
make 8

Fig. 4

3. Place (1) 2" Fabric B square on the right side of (1) 2" x 3 1/2" Fabric A2 strip, right sides together (Fig. 5). Sew across the diagonal of the square from the upper right corner to the lower left corner. Flip open the triangle formed and press. Trim away the excess fabric from behind the triangle, leaving a 1/4" seam allowance to make (1) Unit 3 strip (Fig. 6). Repeat to make (4) Unit 3 strips total.



Fig. 5

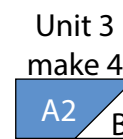


Fig. 6

4. Place (1) 2" Fabric B square on the left side of (1) 2" x 3 1/2" Fabric A2 strip, right sides together. Sew across the diagonal of the square from the upper left corner to the lower right corner. Flip open the triangle formed and press. Trim away the excess fabric from behind the triangle, leaving a 1/4" seam allowance to make (1) Unit 4 strip (Fig. 7). Repeat to make (4) Unit 4 strips total.

Unit 4
make 4



Fig. 7

5. Sew (2) Unit 2 squares together along the Fabric A sides to make the top row. Sew (1) Unit 3 strip to the left end of (1) Unit 4 strip, along the Fabric B sides, to make the bottom row. Sew the (2) rows together lengthwise to make (1) Unit 5 rectangle (Fig. 8). Repeat to make (4) Unit 5 rectangles total.

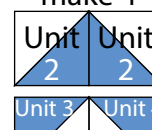
Unit 5
make 4

Fig. 8

6. Sew (1) Unit 1 square to each side of (1) Unit 5 rectangle to make the top row. Repeat to make the bottom row. Sew (1) Unit 5 rectangle to each side of (1) 6 ½" Fabric A3 square to make the middle row. Sew the (3) rows together to make (1) Finished Block (Fig. 9).

7. Repeat Steps 1-6 to make (16) Finished Blocks total.

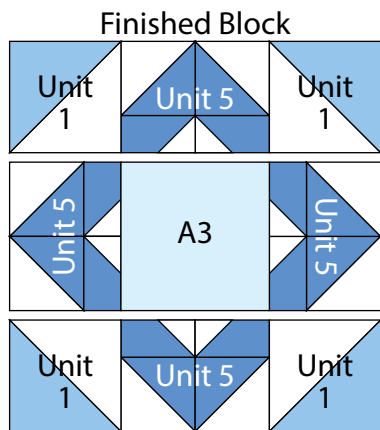


Fig. 9

Quilt Top Assembly

(Follow the Quilt Layout while assembling the quilt top.)

8. Sew (4) Finished Blocks together to make (1) row. Repeat to make (4) rows total.

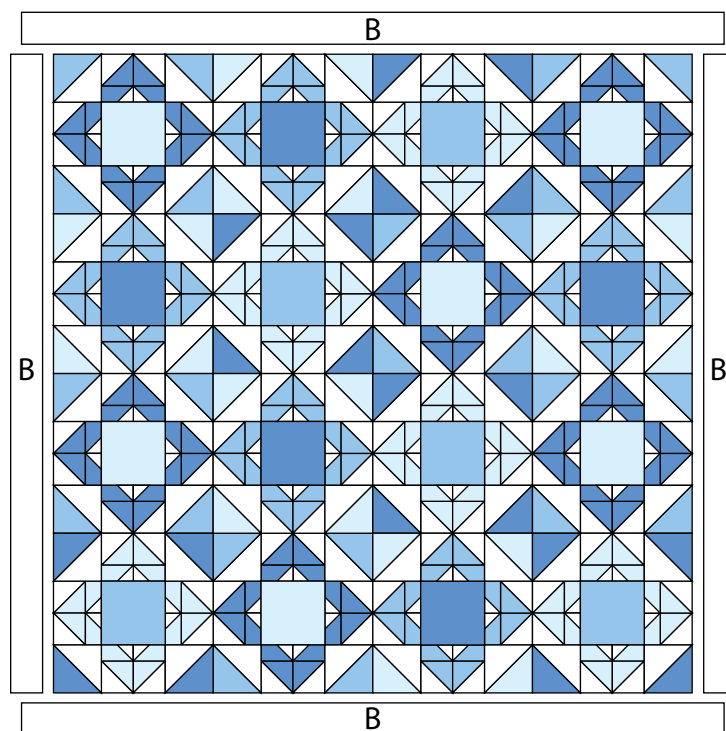
9. Sew the (4) rows together to make the Center Block.

10. Sew (1) 3 ½" x 60 ½" Fabric B strip to each side of the Center Block. Sew (1) 3 ½" x 66 ½" Fabric B strip to the top and to the bottom of the Center Block to make the quilt top.

11. Layer and quilt as desired.

12. Sew the (7) 2 ½" x WOF Fabric C strips together, end to end with 45-degree seams, to make the binding. Fold this long strip in half lengthwise with wrong sides together and press.

13. Bind as desired.



Quilt Layout

*Every effort has been made to ensure that all projects are error free. All the information is presented in good faith, however no warranty can be given nor results guaranteed as we have no control over the execution of instructions. Therefore, we assume no responsibility for the use of this information or damages that may occur as a result. When errors are brought to our attention, we make every effort to correct and post a revision as soon as possible. Please make sure to check www.blankquilting.net for pattern updates prior to starting the project. We also recommend that you test the project prior to cutting for kits. Finally, all free projects are intended to remain free to you and are **not for resale**.*