



# Chromaview

Quilt 1  
by Denise Russell



Quilt size: 46" x 66"

Skill Level: Beginner

**Blank Quilting Corporation**  
49 West 37th Street ♦ New York, NY 10018  
Tel: 800-294-9495 ♦ Fax: 212-679-4578  
[www.blankquilting.net](http://www.blankquilting.net)

facebook

Free Project  
NOT FOR RESALE



# Chromaview ~ Fabrics in the Collection



9724P-66 Panel Green



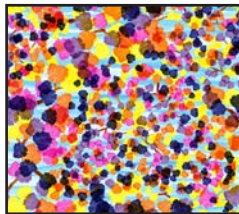
9725-66 Allover Floral  
Green



9726-70 Stripe - Blue



9727-77 Branches with  
Buds - Navy



9728-22 Dots - Pink



9729-33 Trees - Peach



9729-55 Trees - Purple



9729-60 Trees - Lt. Green



9729-70 Trees - Lt. Blue



9730-66 Butterflies -  
Green

## Selected Fabrics from JotDot



9570-11 Lt. Blue



9570-22 Fuchsia



9570-44 Yellow



9570-77 Dk. Blue

## Materials

*Yardages and cutting instructions are based on 42" of usable fabric width.*

1 9724P-66 Panel Green  
3/8 yard JotDot 9570-44 Yellow  
3/8 yard JotDot 9770-22 Fuchsia  
1/2 yard 9726-70 Stripe Blue  
1/2 yard 9725-66 Allover Floral Green  
1/2 yard JotDot 9570-11 Lt. Blue  
1/2 yard JotDot 9570-77 Dk. Blue (binding)  
5/8 yard 9730-66 Butterflies Green  
4-1/4 yards 9729-70 Trees Lt. Blue for backing  
54" x 74" piece of batting

## Cut Fabrics

***Note:** All strips are cut across the width of the fabric (WOF) from selvage to selvage unless otherwise noted. If cut across the length of the fabric (LOF), the **LOF** notation will be indicated.*

### From 9724P-66 Panel Green:

\*Trim panel to 22-1/2" x 42-1/2".

### From JotDot 9570-44 Yellow:

\*Cut four 1-1/2" x WOF strips for border 1.  
\*Cut one 2-1/2" x WOF strip. Sub-cut four 2-1/2" squares for border 4 corner blocks.

### From JotDot 9770-22 Fuchsia:

\*Cut six 1-1/2" x WOF strips for border 7.

### From 9726-70 Stripe Blue:

\*Cut five 2-1/2" x WOF strips for border 4.

### From 9725-66 Allover Floral Green:

\*Cut four 3-1/2" x WOF strips for border 2.

### From JotDot 9570-11 Lt. Blue:

\*Cut ten 1-1/2" x WOF strips – five for border 3 and five for border 5.

### From JotDot 9570-77 Dk. Blue:

\*Cut six 2-1/2" x WOF strips for binding.

### From 9730-66 Butterflies Green:

\*Cut five 3-1/2" x WOF strips for border 6.

## Assemble Quilt Top

1. For border 1, sew together the four 1-1/2" Yellow strips end to end using diagonal seams. Stitch a border strip to each side of the panel and trim the extra length. Press seams toward the border. In the same manner, stitch one border strip to the top and another to the bottom.

2. For border 2, sew four 3-1/2" Allover Floral Green strips together end to end using diagonal seams. Measure the vertical length of the quilt top through the center and cut two border strips that length. Sew one strip to each side of the quilt top. Measure the width of the quilt top through the center. Cut two border strips that length and sew one to the top and one to the bottom. Press the seams toward the borders.

3. Repeat step 2 with the five 1-1/2" Lt. Blue strips to make and add border 3.

4. For border 4, sew five 2-1/2" Stripe Blue strips together end to end using diagonal seams. Measure the vertical length of the quilt top through the center and cut two border strips that length. Sew strips to the sides of the quilt top. For the top and bottom borders, cut two 2-1/2" x 32-1/2" border strips (If quilt center's width including border 3 [Lt. Blue] is different than 32-1/2", adjust these strips accordingly). Sew one 2-1/2" Yellow square to each end of the strips, and sew one strip to the top and one to the bottom. Press seams toward the borders.

5. Repeat step 2 with the five 1-1/2" Lt. Blue strips to make and add border 5.

6. Repeat step 2 with the five 3-1/2" Butterflies Green strips to make and add border 6.

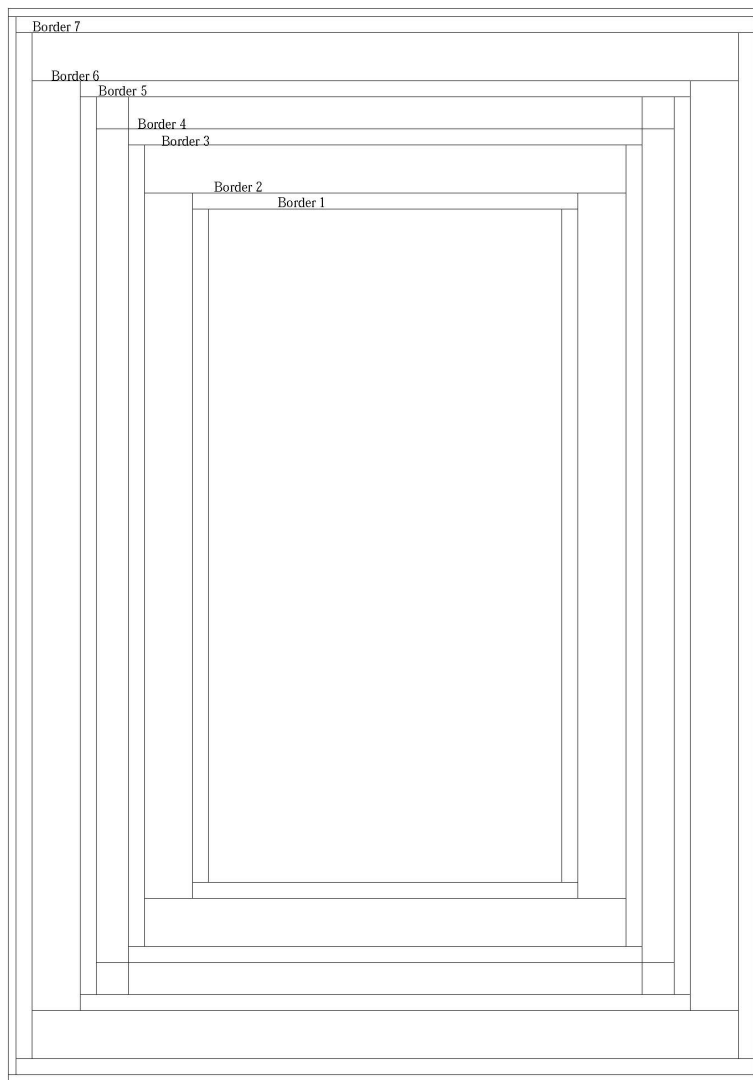
7. Repeat step 2 with the six 1-1/2" Fuchsia strips to make and add border 7.

## Finishing

8. Create a quilt sandwich with the batting between the quilt top and the backing. Pin or baste layers

together, mark quilting design, and quilt by hand or machine. When quilting is complete, remove pins or basting, and trim batting and backing even with raw edges of the quilt top.

9. Join the six 2-1/2" Dk. Blue binding strips together end to end using a diagonal seam to make one long strip. Press in half lengthwise. Sew binding to the edges of the quilt top, mitering corners, and overlapping ends. Fold binding to the back of the quilt and stitch it in place by hand to finish.



Quilt Diagram

©2019 Blank Quilting Corporation

*Every effort has been made to ensure that all projects are error free. All the information is presented in good faith; however, no warranty can be given nor results guaranteed as we have no control over the execution of instructions. Therefore, we assume no responsibility for the use of this information or damages that may occur as a result. When errors are brought to our attention, we make every effort to correct and post a revision as soon as possible. Please make sure to check [www.blankquilting.net](http://www.blankquilting.net) for pattern updates prior to starting the project. We also recommend that you test the project prior to cutting for kits. Finally, all free projects are intended to remain free to you and are not for resale.*