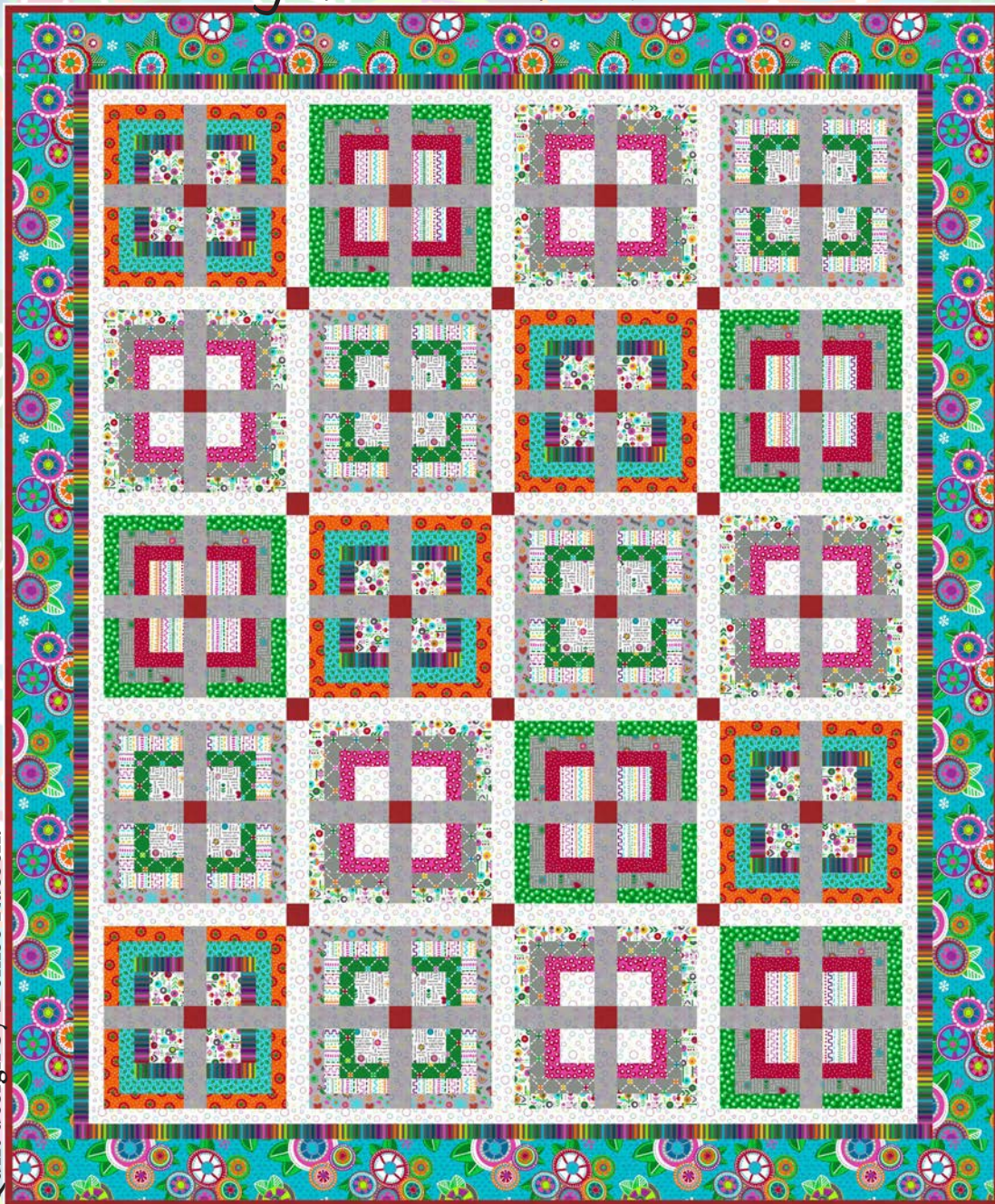




Quilt 1

Daisy Talk

by Diane D. Knott



Quilt design by Denise Russell.

Quilt size: 66" x 79."

Skill Level: Advanced Beginner.

Blank Quilting Corporation
49 West 37th Street ♦ New York, NY 10018
Tel: 800-294-9495 ♦ Fax: 212-679-4578
www.blankquilting.net



Free Project
NOT FOR RESALE

Daisy Talk - Fabrics in the Collection



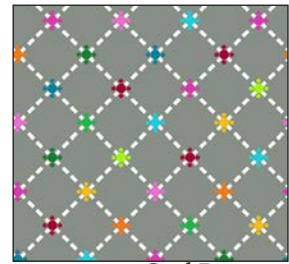
1865-75 Large Floral
Turquoise



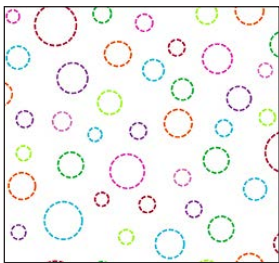
1866-75 Patchwork
Turquoise



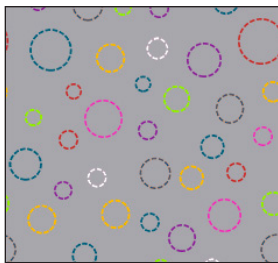
1868-01 Flowers with
Stems - White



1869-90 Grid Dots
Lt. Gray



1870-01 Dash Dots
White



1870-90 Dash Dots
Lt. Gray



1871-90 Emojis
Lt. Gray



1872-01 Rainbow
Stitches - White



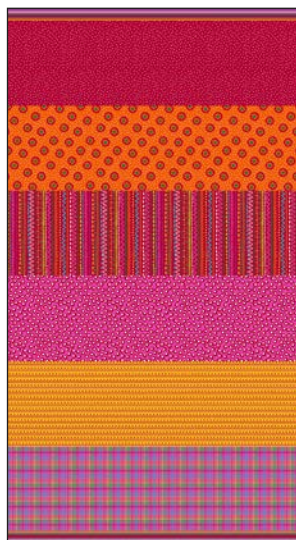
1873-95 Rainbow
Stripe - Dk. Gray



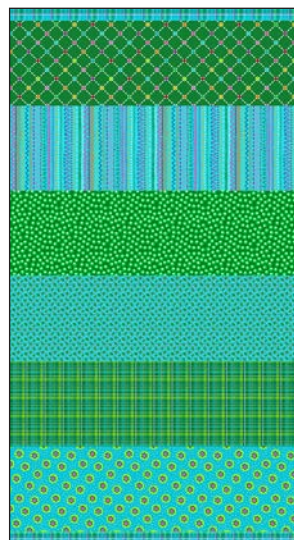
1876-01 Text
White



1876-95 Text
Dk. Gray



1874-88 Channel
Stripe - Red



1875-66 Channel
Stripe - Green

Materials

Yardages and cutting instructions are based on 42" of usable fabric width.

1/4 yard 1876-01 Text - White
1/3 yard 1869-90 Grid Dots - Lt. Gray
1/3 yard 1876-95 Text - Dk. Gray
3/8 yard 1871-90 Emojis - Lt. Gray
1/2 yard 1868-01 Flowers with Stems - White
1/2 yard 1872-01 Rainbow Stitches - White
1/2 yard 1873-95 Rainbow Stripe - Dk. Gray
7/8 yard 3955 Eclipse - Red
1 yard 1870-90 Dash Dots - Lt. Gray
1-1/8 yards 1865-75 Large Floral - Turquoise
1-1/4 yard 1870-01 Dash Dots - White
1-5/8 yards 1874-88 Channel Stripe - Red
1-5/8 yards 1875-66 Channel Stripe - Green
5 yards 1871-90 Emojis - Lt. Gray for backing
74" x 88" piece of Air Lite® Colour Me 100% Cotton batting

Cut Fabrics

Note: Most strips are cut across the width of the fabric (WOF) from selvage to selvage except the Channel Stripes ones which are cut on the length of fabric (LOF).

From 1876-01 Text – White:

*Cut one 5-1/4" x WOF strip. Sub-cut five 5-1/4" squares.

From each:

1869-90 Grid Dots - Lt. Gray

1876-95 Text - Dk. Gray

*Cut one 9-1/4" x WOF strip. Sub-cut ten 1-1/2" x 9-1/4" strips. Trim remainder of the strip to 7-1/4" and cut ten 1-1/2" x 7-1/4" strips.

From 1871-90 Emojis - Lt. Gray:

*Cut one 11-1/4" x WOF strip. Sub-cut ten 1-1/2" x 11-1/4" strips. Trim remainder of the strip to 9-1/4" and cut ten 1-1/2" x 9-1/4" strips.

From 1868-01 Flowers with Stems – White:

*Cut one 5-1/4" x WOF strip. Sub-cut five 5-1/4" squares.

*Cut one 11-1/4" x WOF strip. Sub-cut ten 1-1/2" x 11-1/4" strips. Trim remainder of the strip to 9-1/4" and cut ten 1-1/2" x 9-1/4" strips.

From 1872-01 Rainbow Stitches – White:

*Cut one 5-1/4" x WOF strip. Sub-cut five 5-1/4" squares.

*Cut one 9-1/4" x WOF strip. Sub-cut ten 1-1/2" x 9-1/4" strips. Trim remainder of the strip to 7-1/4" and cut ten 1-1/2" x 7-1/4" strips.

From 1873-95 Rainbow Stripe - Dk. Gray:

*Cut nine 1-1/2" x LOF strips. Sub-cut ten 1-1/2" x 7-1/4" strips and ten 1-1/2" x 5-1/4" strips.

*Cut fourteen 1-1/2" x LOF strips for border 2.

From 3955 Eclipse – Red:

*Cut one 2" x WOF strip. Sub-cut twelve 2" squares.

*Cut two 2-1/4" x WOF strip.

*Cut eight 2-1/2" x WOF strips for binding.

From 1870-90 Dash Dots - Lt. Gray:

*Cut three 2-1/4" x WOF strips. Sub-cut forty 2-1/4" x 5-5/8" strips.

*Cut four 5-5/8" x WOF strips.

From 1870-01 Dash Dots – White:

*Cut four 2" x WOF strips. Sub-cut twelve 2" x 12-1/2" sashing strips.

*Cut one 5-1/4" x WOF strip. Sub-cut five 5-1/4" squares.

*Cut one 12-1/2" x WOF strip. Sub-cut nineteen 2" x 12-1/2" sashing strips (for a total of thirty-one).

*Cut six 1-1/2" x WOF strips for border 1.

From 1865-75 Large Floral – Turquoise:

*Cut eight 4-1/2" x WOF strips for border 3.

From 1874-88 Channel Stripe – Red:

*Red/White dots section: Cut ten 1-1/2" x 5-1/4" strips and ten 1-1/2" x 7-1/4" strips.

*Flowers section: Cut ten 1-1/2" x 9-1/4" strips and ten 1-1/2" x 11-1/4" strips.

*Pink/White large dots section: Cut ten 1-1/2" x 5-1/4" strips and ten 1-1/2" x 7-1/4" strips.

From 1875-66 Channel Stripe – Green:

*Grid Dots section: Cut ten 1-1/2" x 5-1/4" strips and ten 1-1/2" x 7-1/4" strips.

*Green/White large dots section: Cut ten 1-1/2" x 9-1/4" strips and ten 1-1/2" x 11-1/4" strips.

*Lt. Blue/Leaves section: Cut ten 1-1/2" x 7-1/4" strips and ten 1-1/2" x 9-1/4" strips.

Assemble Blocks

Measurements include 1/4" seam allowances. Sew with right sides together unless otherwise stated. If no direction is specified, press the seam toward the darker fabric.

Refer to Table 1 below for the fabric combinations to assemble the blocks.


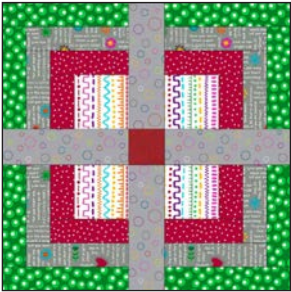

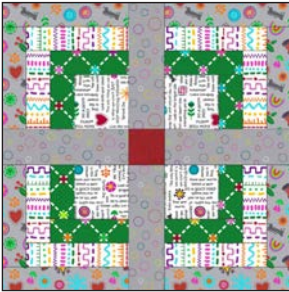
			
<p>Block 1 – Make 5 *1874-88 Channel Stripe – Red (Flowers section) *1875-66 Channel Stripe – Green (Lt. Blue/Leaves section) *1873-95 Rainbow Stripe – Dk. Gray 1868-01 Flowers with Stems – White</p>	<p>Block 2 – Make 5 *1875-66 Channel Stripe – Green (Green/White large dots section) *1876-95 Text – Dk. Gray *1874-88 Channel Stripe – Red (Red/White dots section) *1872-01 Rainbow Stitches – White</p>	<p>Block 3 – Make 5 *1870-01 Dash Dots – White *1869-90 Grid Dots – Lt. Gray *1874-88 Channel Stripe – Red (Pink/White large dots section) *1867-01 Flower Heads – White</p>	<p>Block 4 – Make 5 *1871-90 Emojis – Lt. Gray *1872-01 Rainbow Stitches – White *1875-66 Channel Stripe – Green (Grid Dots section) *1876-01 Text – White</p>

Table 1. Fabric combination for each block.

1. Sew a 1-1/2" x 5-1/4" 1873-95 Rainbow Stripe – Dk. Gray strip to opposite sides of a 5-1/4" 1868-01 Flowers with Stems – White. Press the seams toward the strips. Sew a 1-1/2" x 7-1/4" strip to the top and the bottom (*figure 1*). Press. Repeat to make five units.



Figure 1 – Make (5) 7-1/4" units.

2. As in Step 1, add to its units the 1-1/2" x 7-1/4" and 1-1/2" x 9-1/4" 1875-66 Channel Stripe – Green (Lt. Blue/Leaves section) strips (*figure 2, next page*).



Figure 2 - Units measure 9-1/4”.

3. Repeat Step 2 to add the 1-1/2” x 9-1/4” and 1-1/2” x 11-1/4” 1874-88 Channel Stripe – Red (Flowers section) strips (*figure 3*).



Figure 3 - Units measure 11-1/4”.

4. Cut one Step 3 unit in half. Rotate the unit and cut again. Repeat with the other units. Each resulting square will measure 5-3/8” (*figure 4*).



Figure 4 - Units measure 5-3/8”.

5. Sew a 2-1/4” 3955 Eclipse – Red strip in between two 5-5/8” 1870-90 Dash Dots - Lt. Gray strips to make a strip set. Repeat to make another strip set. Press the seams in one direction. Cross-cut the strip sets into twenty 2-1/4” sections (*figure 5*).



Figure 5 – Make 20.

6. Noticing fabric orientation, sew a 2-1/4” x 5-5/8” 1870-90 Dash Dots - Lt. Gray strip in between two Step 4 units (*figure 6*) to make ten rows. Press the seams toward the Lt. Gray strip.



Figure 6 – Make 10 units.

7. Noticing fabric orientation, sew a Step 6 row to the top and bottom of a Step 5 section. Repeat with the other rows to complete five 12” blocks (*figure 7*). Press the seams in one direction.



Figure 7 – Make (5) 12-1/2” blocks.

8. Repeat Steps 1 – 4, 6, and 7 (and use remaining Dash Dots - Lt. Gray strips and sections) to make the other blocks referring to the cutting instructions and Table 1 above for the fabrics used in each one. Make a total of twenty assorted 12-1/2” blocks.

Assemble Quilt Top

9. Referring to the quilt photo for block placement, lay out four blocks and three 2” x 12-1/2” 1870-01 Dash Dots – White sashing strips in five rows, and join the blocks and sashing strips together in each row. Press the seams toward the sashing.

10. To make the horizontal sashing rows, sew together four 1870-01 Dash Dots – White sashing strips and three 2” 3955 Eclipse – Red cornerstone squares. Repeat to make a total of four sashing strips. Press the seams toward the sashing.

11. Matching adjacent seams, sew block rows and horizontal sashing strips together. Press the seams in one direction.

12. For border 1, sew six 1-1/2” 1870-01 Dash Dots – White strips together end to end using diagonal seams. Measure the vertical length of the quilt top through the center and cut two border strips that length. Sew one strip to each side of the quilt top. Measure the width of the quilt top through the center. Cut two border strips that length and sew one to the top and one to the bottom. Press the seams toward the borders.

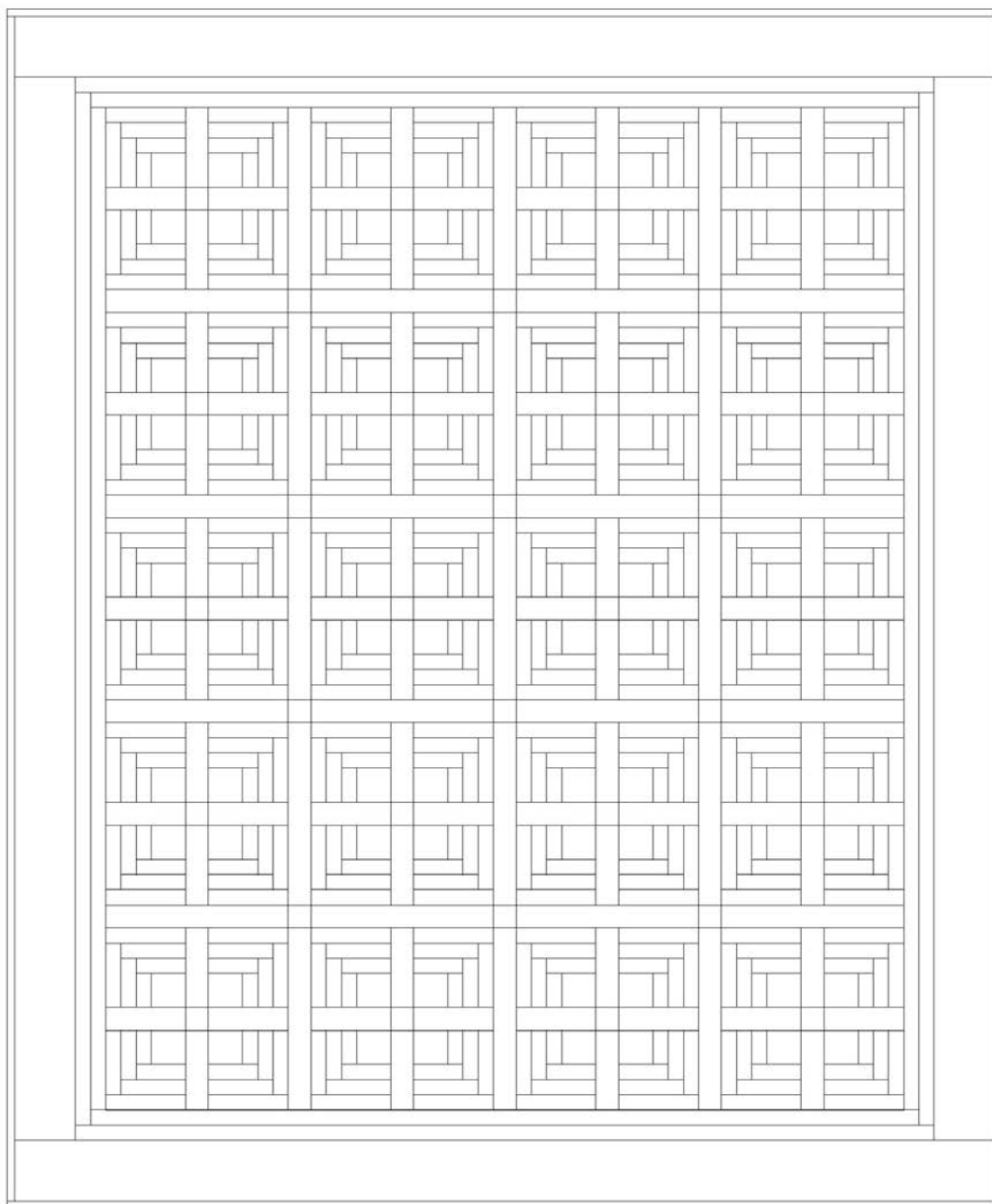
13. Repeat step 12 with the fourteen 1-1/2” 1873-95 Rainbow Stripe - Dk. Gray strips to make and add border 2.

14. Repeat step 12 with the eight 4-1/2” 1865-75 Large Floral – Turquoise strips to make and add border 3.

Finishing

15. Create a quilt sandwich with the batting between the quilt top and the backing. Pin or baste layers together, mark quilting design, and quilt by hand or machine. When quilting is complete, remove pins or basting, and trim batting and backing even with raw edges of the quilt top.

16. Join the eight 2-1/2” 3955 Eclipse – Red binding strips together end to end using a diagonal seam to make one long strip. Fold in half lengthwise and press. Sew binding to the edges of the quilt, mitering corners, and overlapping ends. Fold binding to the back of the quilt and stitch it in place by hand to finish.



Quilt Diagram