



Quilt 2

Daisy Talk

by Diane D. Knott



Quilt design by Denise Russell.

Quilt size: 70" x 82."

Skill Level: Advanced Beginner.

Blank Quilting Corporation
49 West 37th Street ♦ New York, NY 10018
Tel: 800-294-9495 ♦ Fax: 212-679-4578
www.blankquilting.net

facebook

Free Project
NOT FOR RESALE

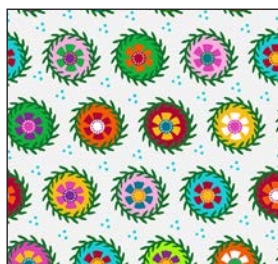
Daisy Talk - Fabrics in the Collection



1865-75 Large Floral
Turquoise



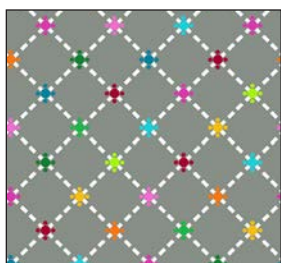
1866-75 Patchwork
Turquoise



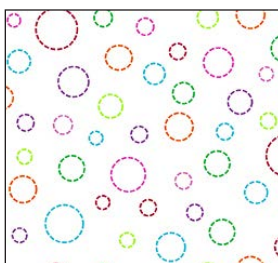
1867-01 Flower Heads
White



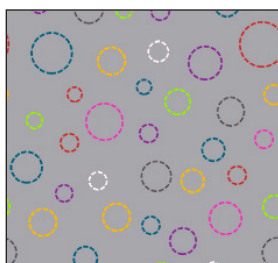
1868-01 Flowers with
Stems - White



1869-90 Grid Dots
Lt. Gray



1870-01 Dash Dots
White



1870-90 Dash Dots
Lt. Gray



1871-90 Emojis
Lt. Gray



1872-01 Rainbow
Stitches - White



1873-95 Rainbow
Stripe - Dk. Gray



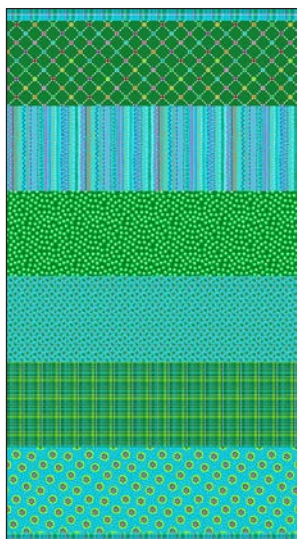
1876-01 Text
White



1876-95 Text
Dk. Gray

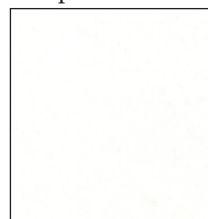


1874-88 Channel
Stripe - Red



1875-66 Channel
Stripe - Green

Selected fabric from the
Eclipse Collection



3955 White

Daisy Talk - Quilt 2

Page 1

Materials

Yardages and cutting instructions are based on 42" of usable fabric width.

3/8 yard 3955 Eclipse - White
1/2 yard 1868-01 Flowers with Stems - White
1 yard 1873-95 Rainbow Stripe - Dk. Gray
1-1/8 yards 1865-75 Large Floral - Turquoise
1-1/8 yards 1871-90 Emojis - Lt. Gray
1-5/8 yards 1875-66 Channel Stripe - Green
2 yards 1874-88 Channel Stripe - Red
2 yards 1870-01 Dash Dots - White
5 yards 1876-95 Text - Dk. Gray for backing
78" x 90" piece of Air Lite® Colour Me 100% Cotton batting

Cut Fabrics

Note: Most strips are cut across the width of the fabric (WOF) from selvage to selvage, but some are cut on the length of the fabric (LOF) as for the Channel Stripe fabrics.

From 3955 Eclipse – White:

*Cut seven 1-1/2" x WOF strips for border 1.

From 1868-01 Flowers with Stems – White:

*Cut seven 2" x WOF strips for border 3.

From 1873-95 Rainbow Stripe - Dk. Gray:

*Cut seven 1-1/2" x WOF strips for border 2.

*Cut eight 2-1/2" x WOF strips for binding.

From 1865-75 Large Floral – Turquoise:

*Cut eight 4-1/2" x WOF strips for border 4.

From 1871-90 Emojis - Lt. Gray:

*Cut five 7-1/4" x WOF strips. Sub-cut twenty-five 7-1/4" squares.

From 1875-66 Channel Stripe – Green:

*Green/White large dots section: Cut two 2-1/2" x **LOF strips**. Sub-cut forty 2-1/2" squares.

*Lt. Blue Rainbow Stitches section: Cut two 2-1/2" x **LOF strips**. Sub-cut forty-five 2-1/2" squares.

From 1874-88 Channel Stripe – Red:

*Red/White dots, Yellow/Red Dots and Stripes sections: Cut two 2-1/2" x **LOF strips from each section**. Sub-cut forty 2-1/2" squares from color.

*Plaid section: Cut two 2-1/2" x **LOF strips**. Sub-cut forty-five 2-1/2" squares.

*Flower section: Cut on the **WOF** four 1-1/2" squares, four 2" squares, and four 4-1/2" squares. Then, cut remaining fabric on the **LOF** into 2-1/2" strips. Sub-cut forty 2-1/2" squares.

From 1870-01 Dash Dots – White:

*Cut thirteen 2-1/2" x WOF strips. Sub-cut 200 2-1/2" squares.

*Cut five 7-1/4" x WOF strips. Sub-cut twenty-five 7-1/4" squares.

Assemble Blocks

Measurements include 1/4" seam allowances. Sew with right sides together unless otherwise stated. If no direction is specified, press the seam toward the darker fabric.

Refer to Table 1 below for the fabric combinations to assemble the blocks.



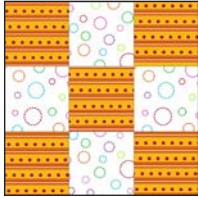
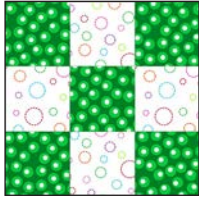



 <p>Block 1 – Make 8 *1874-88 Channel Stripe – Red (Red/White dots section) *1870-01 Dash Dots – White</p>	 <p>Block 2 – Make 8 *1874-88 Channel Stripe – Red (Flowers section) *1870-01 Dash Dots – White</p>	 <p>Block 3 – Make 8 *1874-88 Channel Stripe – Red (Yellow/Red Dots and Stripes section) *1870-01 Dash Dots – White</p>	 <p>Block 4 – Make 8 *1875-66 Channel Stripe – Green (Green/White large dots section) *1870-01 Dash Dots – White</p>
 <p>Block 5 – Make 9 *1875-66 Channel Stripe – Green (Lt. Blue Rainbow Stitches section) *1870-01 Dash Dots – White</p>	 <p>Block 6 – Make 9 *1874-88 Channel Stripe – Red (Plaid section) *1870-01 Dash Dots – White</p>	 <p>Block 7 – Make 49 *1871-90 Emojis – Lt. Gray *1870-01 Dash Dots – White</p>	

Table 1. Fabric combination for each block.

1. Sew a 2-1/2" 1870-01 Dash Dots – White square in between two 2-1/2" 1874-88 Channel Stripe – Red (Red/White dots section) squares. Press the seams away from the center (*figure 1*). Repeat to make sixteen strips.



Figure 1 – Make 16.

2. Sew a 2-1/2" 1874-88 Channel Stripe – Red (Red/White dots section) square in between two 2-1/2" 1870-01 Dash Dots – White squares. Press the seams toward the center (*figure 2*). Repeat to make eight strips.



Figure 2 – Make 8.

3. Sew a Step 1 strip to the top and bottom of a Step 2 strip to make a 6-1/2" block (*figure 3*). Press the seams in one direction. Repeat to make a total of eight 9-patch blocks.

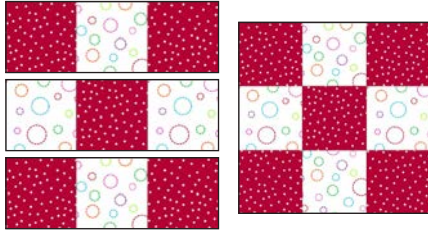


Figure 3

4. Repeat Steps 1 – 3 to make the other blocks referring to the cutting instructions and Table 1 above for the fabrics used in each one. Make a total of fifty assorted 6-1/2" blocks.

5. Draw a diagonal line on the wrong side of the 7-1/4" 1870-01 Dash Dots – White squares. With right sides together, layer the marked White squares atop the 7-1/4" 1871-90 Emojis - Lt. Gray squares and pin. Stitch 1/4" on each side of the marked line, cut on the drawn line, and press each unit open with seams toward dark fabric (a). Draw a diagonal line on the wrong side of half the units. With right sides together, layer the marked units atop the unmarked units – top and bottom fabrics should not match. Pin and stitch 1/4" on each side of the marked line (b), cut on the drawn line, and press each unit open (c). Make a total of forty-nine 6-1/2" hourglass patches (*figure 4*).

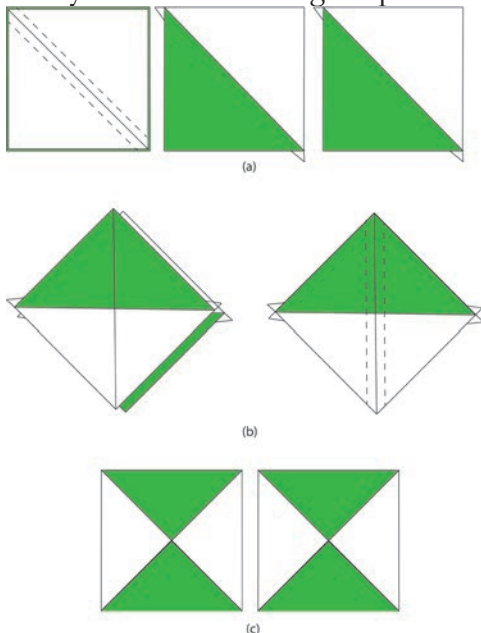


Figure 4 – Make 49.

Assemble Quilt Top

6. Following the quilt photo for block placement and orientation, lay out eleven rows of nine blocks each. Sew the blocks together in each row, then matching adjacent seams, sew the rows together in order.

7. For border 1, sew the seven 1-1/2" 3955 Eclipse – White strips together end to end using diagonal seams. Measure the vertical length of the quilt top through the center and cut two border strips that length. Sew one strip to each side of the quilt top. Measure the width of the quilt top through the center. Cut two border strips that length and sew one to the top and one to the bottom. Press the seams toward the borders.

8. To make border 2, sew the seven 1-1/2" 1873-95 Rainbow Stripe - Dk. Gray strips together end to end using diagonal seams. Measure the width of the quilt top through the center. Cut two border strips that length, sew a 1-1/2" 1874-88 Channel Stripe – Red (Flower section) square to each end of the strips to make the top and the bottom border strips, press seams away from squares, and set them aside. Measure the vertical length of the quilt top through the center and cut two border strips that length. Sew one strip to each side of the quilt top. Press seams toward borders. Finally, sew the top and the bottom strips to the quilt center. Press the seams toward the borders.

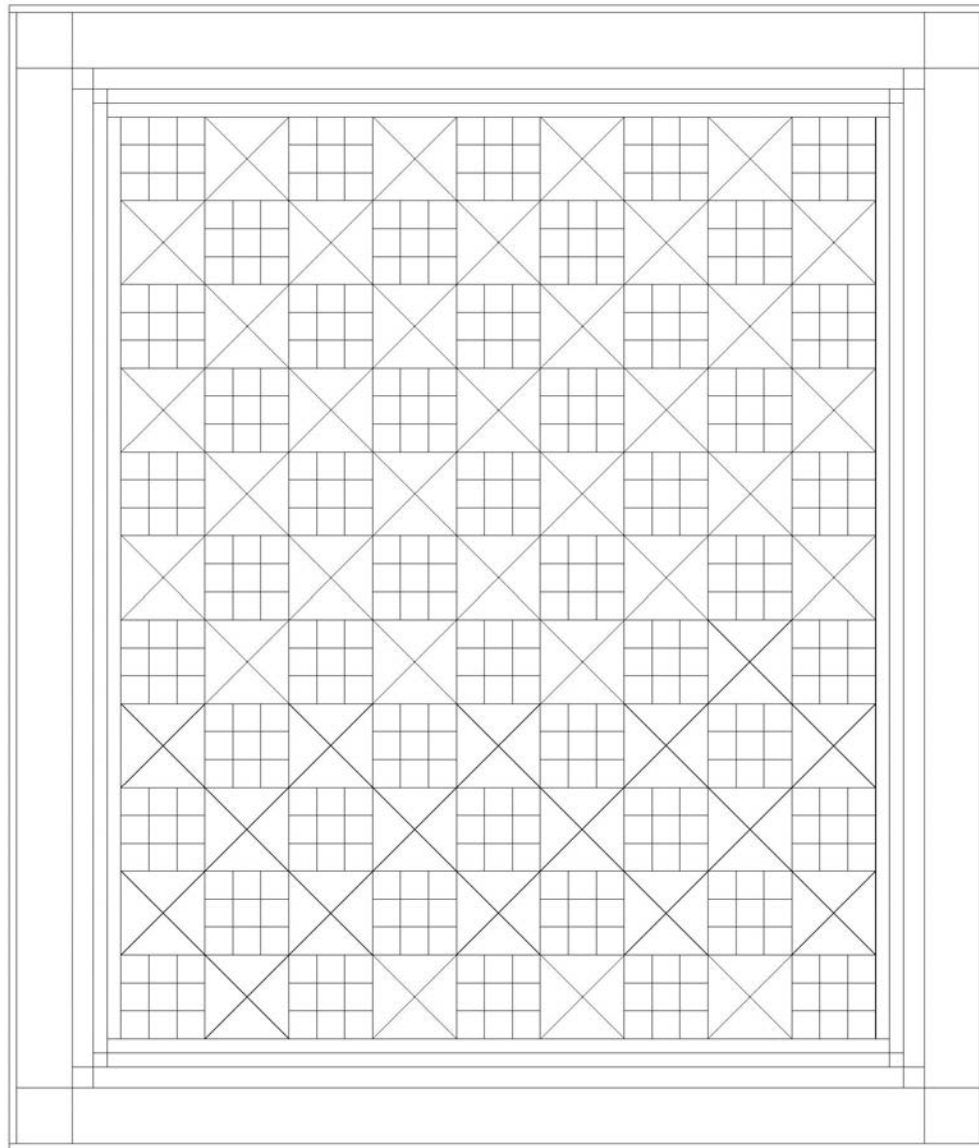
9. Repeat Step 8 with the seven 2" 1868-01 Flowers with Stems – White strips and the 2" 1874-88 Channel Stripe – Red (Flower section) squares to make and add border 3.

10. Repeat Step 8 with the eight 4-1/2" 1865-75 Large Floral – Turquoise strips and the 4-1/2" 1874-88 Channel Stripe – Red (Flower section) squares to make and add border 4.

Finishing

11. Create a quilt sandwich with the batting between the quilt top and the backing. Pin or baste layers together, mark quilting design, and quilt by hand or machine. When quilting is complete, remove pins or basting, and trim batting and backing even with raw edges of the quilt top.

12. Join the eight 2-1/2" 1873-95 Rainbow Stripe - Dk. Gray binding strips together end to end using a diagonal seam to make one long strip. Fold in half lengthwise and press. Sew binding to the edges of the quilt, mitering corners, and overlapping ends. Fold binding to the back of the quilt and stitch it in place by hand to finish.



Quilt Diagram

©2021 Blank Quilting Corporation

Every effort has been made to ensure that all projects are error free. All the information is presented in good faith; however, no warranty can be given nor results guaranteed as we have no control over the execution of instructions. Therefore, we assume no responsibility for the use of this information or damages that may occur as a result. When errors are brought to our attention, we make every effort to correct and post a revision as soon as possible. Please make sure to check www.blankquilting.net for pattern updates prior to starting the project. We also recommend that you test the project prior to cutting for kits. Finally, all free projects are intended to remain free to you and are not for resale.