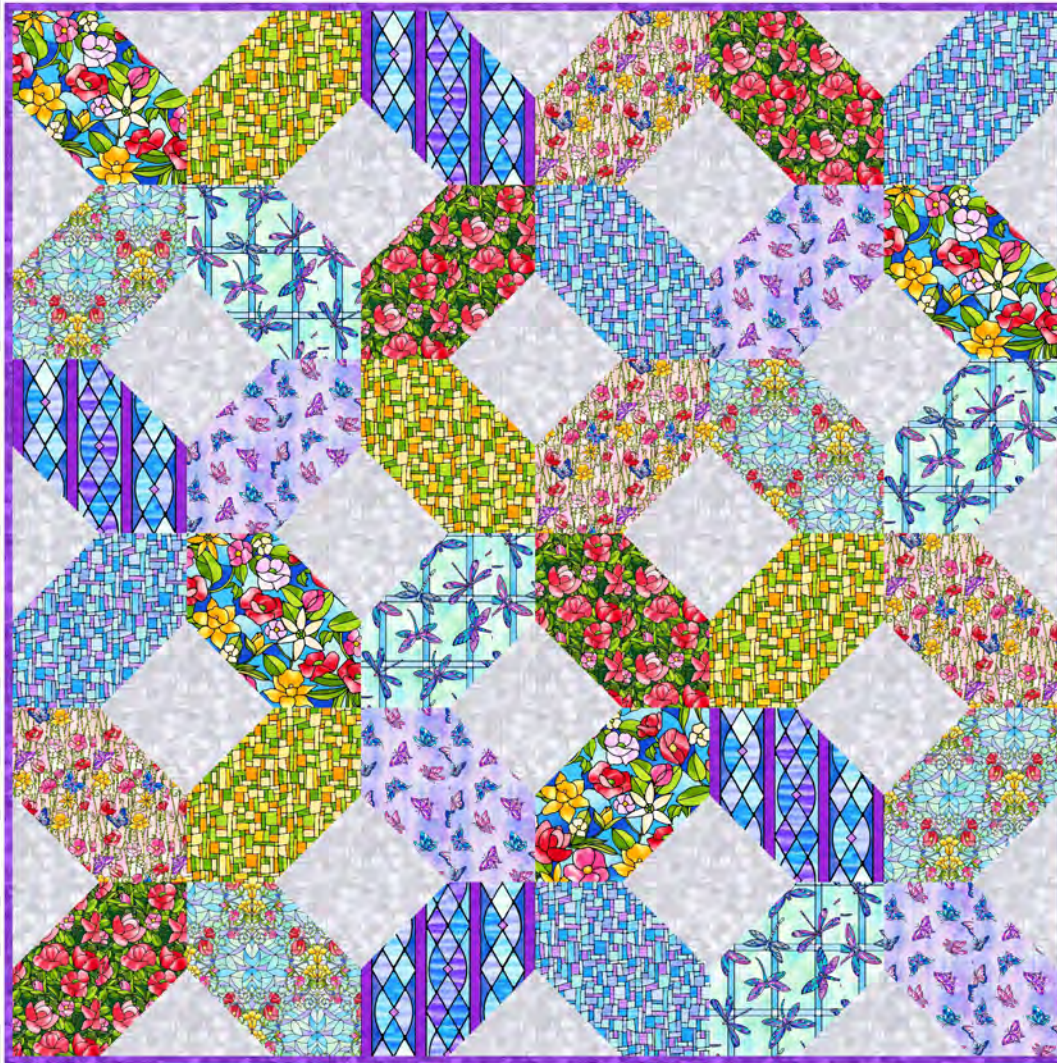




# FANCY GLASS

by Satin Moon Designs



Quilt size: 48" x 48" (1.21m x 1.21m)

Skill Level: Advanced Beginner

## ASAGAIL QUILT

Designed by Running Doe Quilts/Villa Rosa Designs  
[villarosadesigns.com](http://villarosadesigns.com)

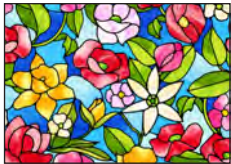


# ASAGAIL QUILT

## Fabric Requirements

			Yards	Meters
A	2915-77	Stained Glass Flowers - Dk. Blue	1 FQ	1 FQ
B	2916-60	Stained Glass Dragonflies - Aqua	1 FQ	1 FQ
C	2917-50	Stained Glass Butterflies - Lt. Purple	1 FQ	1 FQ
D	2918-20	Stained Glass Flowers with Butterflies - Lt. Pink	1 FQ	1 FQ
E	2919-88	Stained Glass Roses with Leaves - Red	1 FQ	1 FQ
F	2920-44	Stained Glass Geo - Yellow	1 FQ	1 FQ
G	2920-70	Stained Glass Geo - Lt. Blue	1 FQ	1 FQ
H	2921-70	Stained Glass Bouquets - Lt. Blue	1 FQ	1 FQ
I	2922-77	Stained Glass Stripe - Dk. Blue	1 FQ	1 FQ
J	9570-93	Jot Dot - Fog	1	0.91
K	9570-53*	Jot Dot - Lilac	1/2	0.46
Back	2919-88	Stained Glass Roses with Leaves - Red	3-1/2	3.20

\*Includes binding.



2915-77 Stained Glass Flowers - Dk. Blue



2916-60 Stained Glass Dragonflies - Aqua



2917-50 Stained Glass Butterflies - Lt. Purple



2918-20 Stained Glass Flowers with Butterflies - Lt. Pink



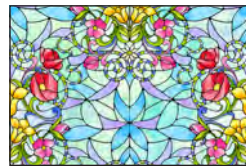
2919-88 Stained Glass Roses with Leaves - Red



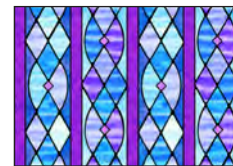
2920-44 Stained Glass Geo - Yellow



2920-70 Stained Glass Geo - Lt. Blue



2921-70 Stained Glass Bouquets - Lt. Blue



2922-77 Stained Glass Stripe - Dk. Blue

### Jot Dot Collection



9570-53  
Lilac



9570-93  
Fog

### Blank Quilting Corporation