



FANCY GLASS

by Satin Moon Designs



Quilt size: 92" x 104" (2.33m x 2.64m)

Skill Level: Advanced Beginner

FANCY GLASS QUILT

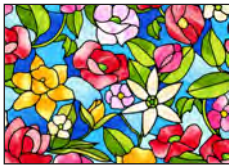
Designed and sold by Ruth Ann Berry
quiltersclinic.com

FANCY GLASS QUILT

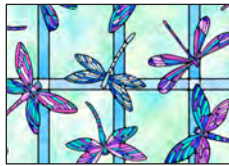
Fabric Requirements

| | | | Yards | Meters |
|------|----------|---|---------|---------|
| A | 2915-77 | Stained Glass Flowers - Dk. Blue | 1/2 | 0.46 |
| B | 2916-60 | Stained Glass Dragonflies - Aqua | 1-1/4 | 1.14 |
| C | 2917-50 | Stained Glass Butterflies - Lt. Purple | 1/2 | 0.46 |
| D | 2919-88 | Stained Glass Roses with Leaves - Red | 1/2 | 0.46 |
| E | 2920-44 | Stained Glass Geo - Yellow | 1/4 | 0.23 |
| F | 2920-70 | Stained Glass Geo - Lt. Blue | 1/4 | 0.23 |
| G | 2922-77 | Stained Glass Stripe - Dk. Blue | 1 1/2 | 1.37 |
| H | 2923P-60 | Stained Glass Panel 36" - Aqua | 1 Panel | 1 Panel |
| I | 2311-22* | Verona Basic - Fuschia | 4 | 3.66 |
| J | 2311-70 | Verona Basic - Turquoise | 2-1/4 | 2.06 |
| K | 2311-62 | Verona Basic - Chartreuse | 3/4 | 0.69 |
| Back | 2918-20 | Stained Glass Flowers with Butterflies - Lt. Pink | 8-3/4 | 8.00 |

*Includes binding.



2915-77 Stained Glass Flowers - Dk. Blue



2916-60 Stained Glass Dragonflies - Aqua



2917-50 Stained Glass Butterflies - Lt. Purple



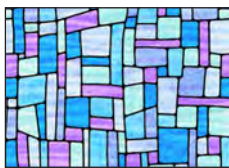
2918-20 Stained Glass Flowers with Butterflies - Lt. Pink



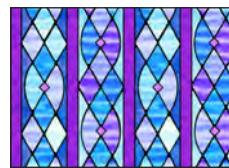
2919-88 Stained Glass Roses with Leaves - Red



2920-44 Stained Glass Geo - Yellow



2920-70 Stained Glass Geo - Lt. Blue



2922-77 Stained Glass Stripe - Dk. Blue



2923P-60 Stained Glass Panel 36" - Aqua

Verona Collection



2311-22 Fuschia



2311-62 Chartreuse



2311-70 Turquoise

Blank Quilting Corporation