

Blank
QUILTING CORPORATION
the fabric of inspiration

Quilt 1

Folk Garden

by Color Pop Studio

Quilt design by Denise Russell.



Quilt size: 44" x 64"

Skill Level: Beginner

Blank Quilting Corporation
49 West 37th Street ♦ New York, NY 10018
Tel: 800-294-9495 ♦ Fax: 212-679-4578
www.blankquilting.net

facebook

Free Project
NOT FOR RESALE

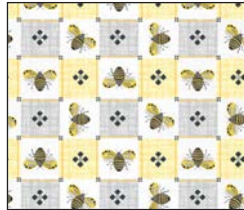
Folk Garden - Fabrics in the Collection



2396-90 Trees & Flowers - Gray



2397-90 Yellow Flowers - Gray



2398-44 Bee Geometric - Yellow



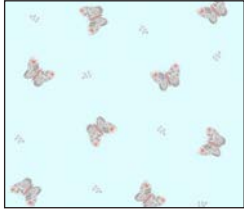
2399-90 Butterflies & Bugs - Gray



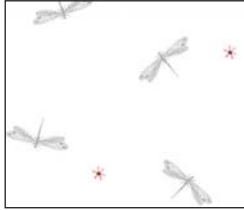
2400-90 Flowers with Bugs - Gray



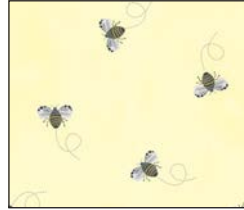
2402-44 Tossed Butterflies - Yellow



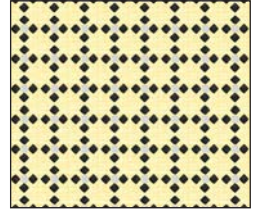
2403-60 Butterflies Lt. Aqua



2404-01 Dragonflies White



2405-44 Bees Yellow



2406-44 Square Geometric - Yellow



2401-90 Border Stripe Gray



2408P-90 Floral Panel Gray

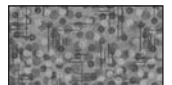


2407-70 Small Ditsy Floral - Lt. Blue

Selected fabrics from the Jot Dot Collection



9570-09 Marshmallow



9570-92 Charcoal

Materials

Yardages and cutting instructions are based on 42" of usable fabric width.

1 panel 2408P-90 Floral Panel - Gray
1/8 yard 2405-44 Bees - Yellow
1/4 yard 9570-09 Jot Dot - Marshmallow
1/4 yard 2397-90 Yellow Flowers - Gray
1/4 yard 2407-70 Small Ditsy Floral - Lt. Blue
3/8 yard 2402-44 Tossed Butterflies - Yellow
1-1/8 yards 2401-90 Border Stripe - Gray
1-1/4 yards 9570-92 Jot Dot - Charcoal
3 yards 2398-44 Bee Geometric - Yellow for backing
51" x 71" piece of Air Lite® Colour Me 100% Cotton batting

Cut Fabrics

Note: All strips are cut across the width of the fabric (WOF) from selvage to selvage unless otherwise indicated.

From 2408P-90 Floral Panel – Gray:

*Trim panel to 22" x 42".

From 2405-44 Bees – Yellow:

*Cut one 1-1/2" x WOF strip.

From 9570-09 Jot Dot – Marshmallow:

*Cut one 1-1/2" x WOF strip.

*Cut one 3-1/2" x WOF strip. Sub-cut eight 1-1/2" x 3-1/2" strips and eight 1-1/2" x 2-1/2" strips.

From 2397-90 Yellow Flowers – Gray:

*Cut four 1-1/2" x WOF strips for border 2.

From 2407-70 Small Ditsy Floral - Lt. Blue:

*Cut four 1-1/2" x WOF strips for border 4.

From 2402-44 Tossed Butterflies – Yellow:

*Cut four 2-1/2" x WOF strips for border 3.

From 2401-90 Border Stripe – Gray:

*Cut five 4-1/2" x LOF strips for border 6.

From 9570-92 Jot Dot – Charcoal:

*Cut three 1-1/2" x WOF strips. Sub-cut **one** strip into twelve 1-1/2" squares.

*Cut nine 1-1/4" x WOF strips: four for border 1 and five for border 5.

*Cut six 2" x WOF strips for border 7.

*Cut six 2-1/2" x WOF strips for binding.

Assemble Blocks

Note: Measurements include 1/4" seam allowances. Sew with right sides together unless otherwise stated. If no direction is specified, press the seam toward the darker fabric.

1. Sew together the 1-1/2" 2405-44 Bees – Yellow strip and one 1-1/2" 9570-92 Jot Dot – Charcoal strip to make a strip set. Do not press open. Cross-cut strip set into eight 1-1/2" sections. Press open. Sew the sections two-by-two to make four 2-1/2" units (*figure 1*). Press seams open.

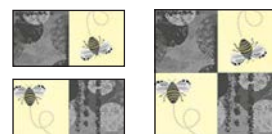


Figure 1 – Make (4) 2-1/2" units.

2. Repeat Step 1 with the 1-1/2" 9570-01 Jot Dot – Marshmallow strip and another 1-1/2" 9570-92 Jot Dot – Charcoal strip to make four 2-1/2" units. Press seams open. Noting fabric orientation, sew one 1-1/2" x 2-1/2" 9570-01 Jot Dot – Marshmallow strip to opposite sides of each unit. Press the seams away from the center. Sew one 1-1/2" 9570-92 Jot Dot – Charcoal square to one end of the 1-1/2" x 3-1/2" 9570-01 Jot Dot – Marshmallow strips. Press the seams toward the dark fabric. Noting fabric direction, sew one strip to the top and one to the bottom of all units to make four 4-1/2" patches (*figure 2*). Press the seams in one direction.

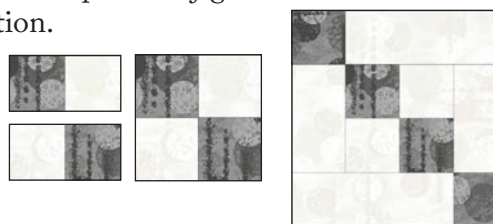


Figure 2 – Make (4) 4-1/2" units.

Assemble Quilt Top

3. For border 1, trim two 1-1/4" 9570-92 Jot Dot – Charcoal strips to 42". Sew one strip to each side

of the quilt top. Measure the width of the quilt top through the center. Trim two more 1-1/4" Charcoal strips that length and sew one to the top and one to the bottom of the quilt top. Press the seams toward the borders.

4. For border 2, measure the width of the quilt top through the center. Trim two 1-1/2" 2397-90 Yellow Flowers – Gray strips that length, sew one 1-1/2" 9570-92 Jot Dot – Charcoal square to each end, press the seams toward the center, and save. Measure the vertical length of the quilt top through the center. Join the remaining two Flowers – Gray strips end to end using diagonal seams and trim them to that length. Sew one strip to each side of the quilt top and press the seams toward the border strips. Finally, sew the top and bottom border strips. Press the seams away from the center.

5. For border 3, join the four 2-1/2" 2402-44 Tossed Butterflies – Yellow strips end to end using diagonal seams. Repeat Step 4 with this long strip and the Step 1 blocks. Press the seams away from the center.

6. Repeat Step 4 with the 1-1/2" 2407-70 Small Ditsy Floral - Lt. Blue strips and the remaining 1-1/2" 9570-92 Jot Dot – Charcoal squares to make and add border 4.

7. For border 5, join the five 1-1/4" 9570-92 Jot Dot – Charcoal strips together end to end using diagonal seams. Measure the vertical length of the quilt top through the center and cut two border strips that length. Sew one strip to each side of the quilt top and press the seams toward the border strips. Measure the

width of the quilt top through the center. Cut two border strips that length and sew one to the top and one to the bottom. Press the seams toward the borders.

8. For border 6, measure the width of the quilt top through the center. Trim two 4-1/2" 2401-90 Border Stripe – Gray strips that length, sew one Step 2 block to each end, press the seams toward the center, and save. Measure the vertical length of the quilt top through the center. Join the remaining 4-1/2" Border Stripe strips end to end using straight seams and trim them to that length. Sew one strip to each side of the quilt top and press the seams toward the border strips. Finally, sew the top and bottom border strips. Press the seams away from the center.

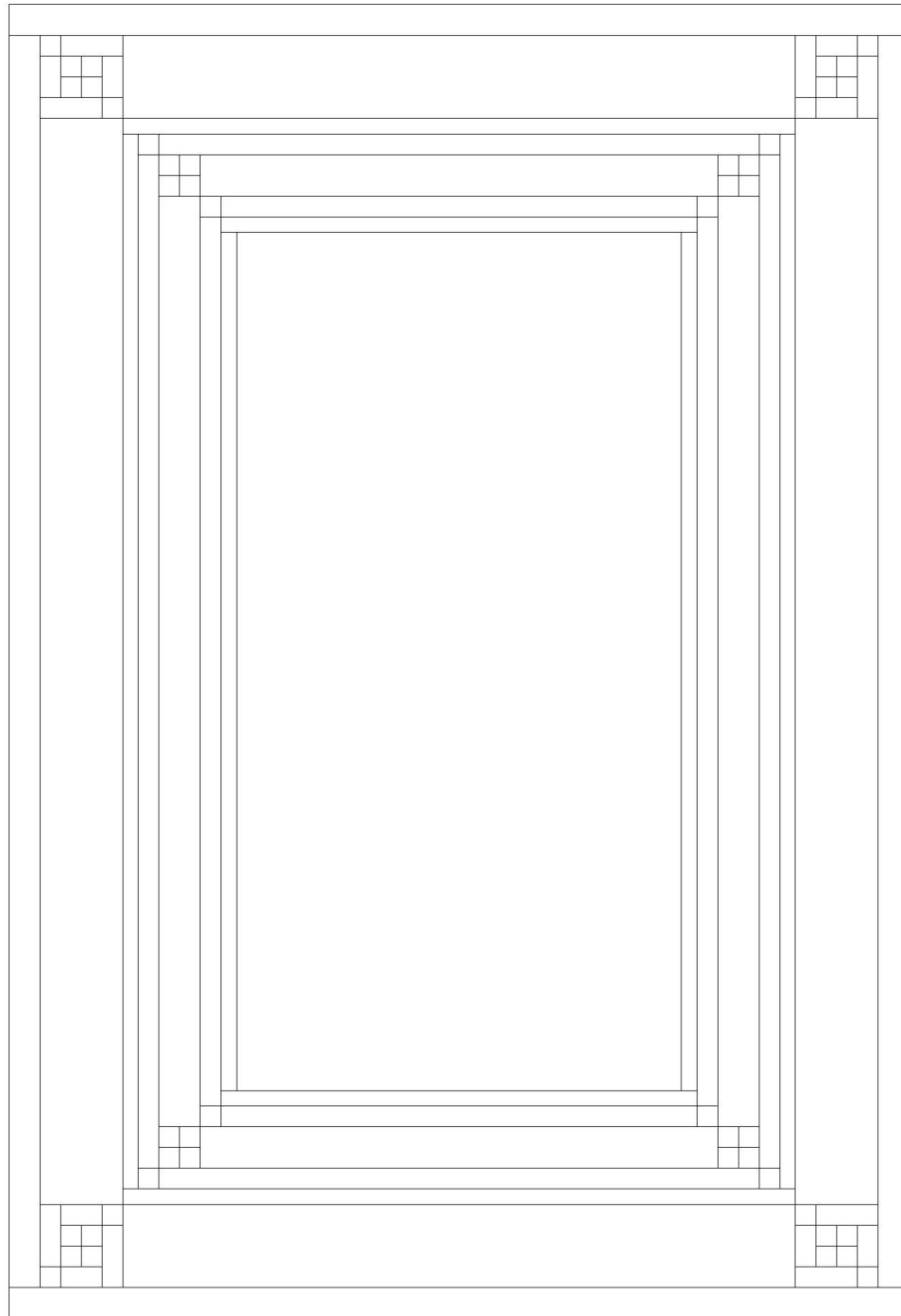
9. Repeat Step 7 with the six 2" 9570-92 Jot Dot – Charcoal strips to make and add border 7.

Finishing

10. Create a quilt sandwich with the batting between the quilt top and the backing. Pin or baste layers together, mark quilting design, and quilt by hand or machine. When quilting is complete, remove pins or basting, and trim batting and backing even with raw edges of the quilt top.

11. Join the six 2-1/2" 9570-92 Jot Dot – Charcoal binding strips together end to end using a diagonal seam to make one long strip. Fold in half lengthwise and press. Sew binding to the edges of the quilt, mitering corners, and overlapping ends. Fold binding to the back of the quilt and stitch it in place by hand to finish.

Folk Garden - Quilt 1



Quilt Diagram