



Quilt 2

# Folk Garden

by Color Pop Studio



Quilt design by Denise Russell.

Quilt size: 79" x 92"

Skill Level: Intermediate

**Blank Quilting Corporation**

49 West 37th Street ♦ New York, NY 10018

Tel: 800-294-9495 ♦ Fax: 212-679-4578

[www.blankquilting.net](http://www.blankquilting.net)

facebook

Free Project  
NOT FOR RESALE



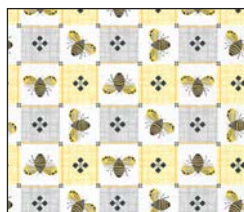
# Folk Garden - Fabrics in the Collection



2396-90 Trees &  
Flowers - Gray



2397-90 Yellow  
Flowers - Gray



2398-44 Bee  
Geometric - Yellow



2399-90 Butterflies &  
Bugs - Gray



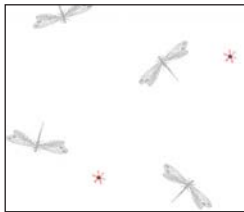
2400-90 Flowers with  
Bugs - Gray



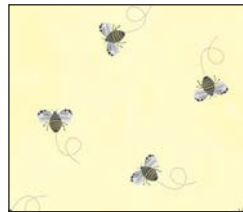
2402-44 Tossed  
Butterflies - Yellow



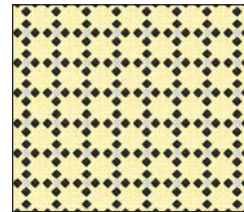
2403-60 Butterflies  
Lt. Aqua



2404-01 Dragonflies  
White



2405-44 Bees  
Yellow



2406-44 Square  
Geometric - Yellow



2401-90 Border Stripe  
Gray



2408P-90 Floral Panel  
Gray



2407-70 Small Ditsy  
Floral - Lt. Blue

Selected fabrics from the  
Jot Dot and Jot Dot II Collections



9570-65  
Olive



9570-92  
Charcoal

# Folk Garden - Quilt 2

Page 1

## Materials

*Yardages and cutting instructions are based on 42" of usable fabric width.*

1/3 yard 2396-90 Trees & Flowers - Gray  
1/3 yard 2402-44 Tossed Butterflies - Yellow  
3/8 yard 2405-44 Bees - Yellow  
1/2 yard 2397-90 Yellow Flowers - Gray  
5/8 yard 9570-92 Jot Dot - Charcoal  
7/8 yard 2407-70 Small Ditsy Floral - Lt. Blue  
1 yard 2399-90 Butterflies & Bugs - Gray  
1-1/8 yards 9570-65 Jot Dot - Olive  
1-3/4 yards 2403-60 Butterflies - Lt. Aqua  
1-7/8 yards 2404-01 Dragonflies - White  
3-1/2 yards 2401-90 Border Stripe - Gray  
7-1/4 yards 2400-90 Flowers with Bugs - Gray  
for backing  
87" x 100" piece of Air Lite® Colour Me 100%  
Cotton batting

## Cut Fabrics

*Note: All strips are cut across the width of the fabric (WOF) from selvage to selvage unless otherwise indicated.*

### From 2396-90 Trees & Flowers – Gray:

\*Cut two 4-1/2" x WOF strips. Sub-cut fifteen 4-1/2" squares.

### From 2402-44 Tossed Butterflies – Yellow:

\*Cut two 3-1/2" x WOF strips. Sub-cut fifteen 3-1/2" squares.

### From 2405-44 Bees – Yellow:

\*Cut four 2-1/2" x WOF strips. Sub-cut sixty 2-1/2" squares.

### From 2397-90 Yellow Flowers – Gray:

\*Cut nine 1-1/2" x WOF strips for border 4.

### From 9570-92 Jot Dot – Charcoal:

\*Cut six 1-1/2" x WOF strips. Sub-cut **one** strip into twenty 1-1/2" squares.  
\*Cut two 5-1/4" x WOF strips. Sub-cut fifteen 5-1/4" squares.

### From 2407-70 Small Ditsy Floral - Lt. Blue:

\*Cut four 2-3/8" x WOF strips. Sub-cut sixty 2-3/8" squares.  
\*Cut two 7-3/4" x WOF strips. Sub-cut eight 7-3/4" squares.

### From 2399-90 Butterflies & Bugs – Gray:

\*Cut twelve 2-1/2" x WOF strips. Sub-cut 180 2-1/2" squares.

### From 9570-65 Jot Dot – Olive:

\*Cut eight 1-1/2" x WOF strips for border 2.  
\*Cut nine 2-1/2" x WOF strips for binding.

### From 2403-60 Butterflies - Lt. Aqua:

\*Cut two 4-1/4" x WOF strips. Sub-cut fifteen 4-1/4" squares.  
\*Cut two 7-3/4" x WOF strips. Sub-cut eight 7-3/4" squares.  
\*Cut one 9-1/2" x WOF strip. Sub-cut twenty-one 2" x 9-1/2" strips.  
\*Cut two 12-1/2" x WOF strips. Sub-cut thirty 2" x 12-1/2" strips and nine 2" x 9-1/2" strips (for a total of 30).

### From 2404-01 Dragonflies – White:

\*Cut five 1-1/2" x WOF strips.  
\*Cut three 3-1/2" x WOF strips. Sub-cut sixty 2" x 3-1/2" strips.  
\*Cut four 8-1/2" x WOF strips. Sub-cut sixty 2-1/2" x 8-1/2" rectangles.  
\*Cut eight 1-1/2" x WOF strips for border 1.

### From 2401-90 Border Stripe – Gray:

\*Fussy-cut the floral motif into five 4-1/2" x **LOF** strips for border 3.  
\*Fussy-cut the yellow motif into 1-1/2" strips. Sub-cut into forty-nine 1-1/2" x 12-1/2" sashing strips.

## Assemble Blocks

*Note: Measurements include 1/4" seam allowances. Sew with right sides together unless otherwise stated. If no direction is specified, press the seam toward the darker fabric.*

1. Sew one 1-1/2" 2404-01 Dragonflies – White strip to a 1-1/2" 9570-92 Jot Dot – Charcoal strip to make a strip set. Do not press open. Repeat to make five strip sets. Cross-cut the strip sets into 120 1-1/2" sections. Press open. Sew the sections two-by-two to make sixty 2-1/2" units (*figure 1*). Press the seams open.

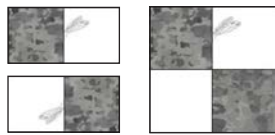


Figure 1 – Make (60) 2-1/2" units.

2. Draw a diagonal line on the back of 120 2-1/2" 2399-90 Butterflies & Bugs – Gray squares. Sew one Gray square to opposite ends of one 2-1/2" x 8-1/2" 2404-01 Dragonflies – White rectangle. Trim seam allowances to 1/4" and press open. Repeat to make sixty 2-1/2" x 8-1/2" units (*figure 2*). Save thirty units for Step 6.



Figure 2 – Make (60) 2-1/2" x 8-1/2" units.

3. Sew one Step 1 unit to opposite ends of thirty Step 2 units (*figure 3*). Press the seams toward the center.



Figure 3 – Make 30.

4. Mark a diagonal line on the wrong side of the 2-1/2" 2405-44 Bees – Yellow squares. With right sides together, place two marked Yellow squares on opposite corners of one 5-1/4" 9570-92 Jot Dot – Charcoal square, making sure drawn lines intersect in the middle and noting that the corners of the small squares will overlap. Stitch 1/4" on each side of the marked line (a), cut on the drawn line (b), and press each unit open (c). Place one more marked Yellow square on the corner of each unit, stitch as before (d), and cut. Press the seams open (e) to make four 2-1/2" x 4-1/2" flying-geese units. Repeat with the remaining 2-1/2" Yellow and the 5-1/4" Charcoal squares to make a total of sixty flying-geese units (*figure 4*).

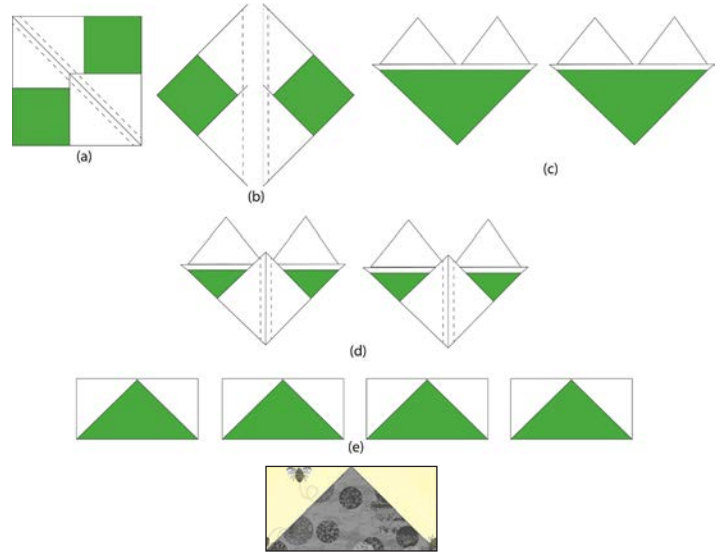


Figure 4 – Make (60) 2-1/2" x 4-1/2" units.

5. Sew one Step 4 unit to opposite sides of a 4-1/2" 2396-90 Trees & Flowers – Gray square. Press the seams toward the center. Repeat to make fifteen center strips. Sew a 2-1/2" 2399-90 Butterflies & Bugs – Gray square to each end of the remaining Step 4 units and press the seams away from the center. Sew one strip to the top and one to the bottom of the center strips (*figure 5*). Press the seams in one direction.



Figure 5 – Make 15.

6. Noting fabric orientation, sew one saved Step 2 unit to opposite sides of the Step 5 units. Press the seams away from the center. Sew one Step 3 strip to the top and one to the bottom of each unit. Repeat to make fifteen 12-1/2" blocks (*figure 6, here and on next page*). Press the seams in one direction.







Figure 6 – Make (15) 12-1/2" blocks.

7. Repeat Step 4 with the 2-3/8" 2407-70 Small Ditsy Floral - Lt. Blue squares and the 4-1/4" 2403-60 Butterflies - Lt. Aqua squares to make sixty 2" x 3-1/2" flying-geese units. Sew a 2" x 3-1/2" 2404-01 Dragonflies - White strip to each unit (*figure 7*). Press the seams toward the White strips.



Figure 7 – Make 60.

8. Noting fabric orientation, sew one Step 7 unit to opposite sides of a 3-1/2" 2402-44 Tossed Butterflies - Yellow square (*figure 8*). Press the seams toward the center. Repeat to make fifteen center strips.



Figure 8 – Make 15.

9. Mark two diagonal lines on the wrong side of the 7-3/4" 2403-60 Butterflies - Lt. Aqua squares (a). Layer a marked Lt. Aqua square atop a 7-3/4" 2407-70 Small Ditsy Floral - Lt. Blue square. Stitch 1/4" on each side of the marked lines (b), cut vertically and horizontally to make four equal squares (c), then cut each square on the drawn lines to make eight half-square triangles (d). Press open and trim dog ears (*figure 9*). Repeat with the remaining Lt. Aqua and Lt. Blue squares to make a total of sixty 3-1/2" half-square triangles (HST).

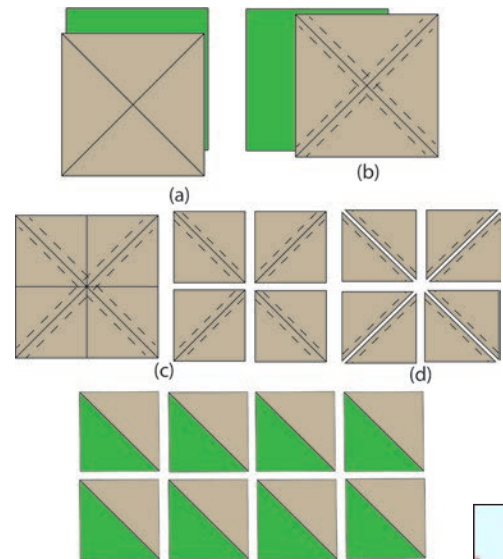


Figure 9 – Make 60.

10. Sew a Step 9 HST to opposite sides of a Step 7 unit. Press the seams away from the center. Repeat to make thirty strips. Sew one strip to the top and one to the bottom of the Step 8 center strips (*figure 10*). Press the seams in one direction.

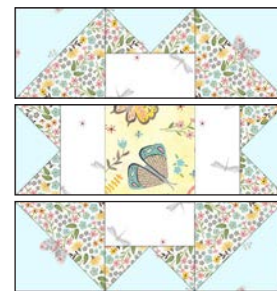


Figure 10

11. Sew a 2" x 9-1/2" 2403-60 Butterflies - Lt. Aqua strip to opposite sides of the Step 10 units. Press the seams away from the center. Sew one 2" x 12-1/2" 2403-60 Butterflies - Lt. Aqua strip to the top and one to the bottom of every unit to make fifteen 12-1/2" blocks (*figure 11, here and next page*). Press as before.



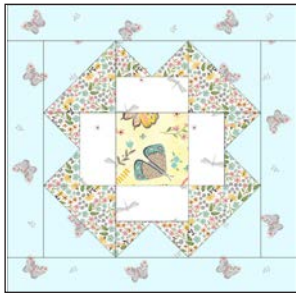


Figure 11 – Make (15) 12-1/2” blocks.

## Assemble Quilt Top

12. Referring to the quilt photo for block placement, lay out the blocks and the 1-1/2” x 12-1/2” 2401-90 Border Stripe – Gray sashing strips in six rows, and join the blocks and sashing strips together in each row. Press the seams toward the sashing.

13. To make the horizontal sashing rows, sew together five 1-1/2” x 12-1/2” 2401-90 Border Stripe – Gray sashing strips and four 1-1/2” 9570-92 Jot Dot – Charcoal cornerstone squares. Repeat to make a total of five sashing strips. Press the seams toward the sashing.

14. Matching adjacent seams, sew block rows and horizontal sashing strips together. Press the seams in one direction.

15. For border 1, join the eight 1-1/2” 2404-01 Dragonflies – White strips together end to end using diagonal seams. Measure the vertical length of the

quilt top through the center and cut two border strips that length. Sew one strip to each side of the quilt top and press the seams toward the border strips. Measure the width of the quilt top through the center. Cut two border strips that length and sew one to the top and one to the bottom. Press the seams toward the borders.

16. Repeat Step 15 with the eight 1-1/2” 9570-65 Jot Dot – Olive strips to make and add border 2.

17. Repeat Step 15 with the five 4-1/2” 2401-90 Border Stripe – Gray strips to make and add border 3, except join them with straight seams.

18. Repeat Step 15 with the nine 1-1/2” 2397-90 Yellow Flowers – Gray strips to make and add border 4.

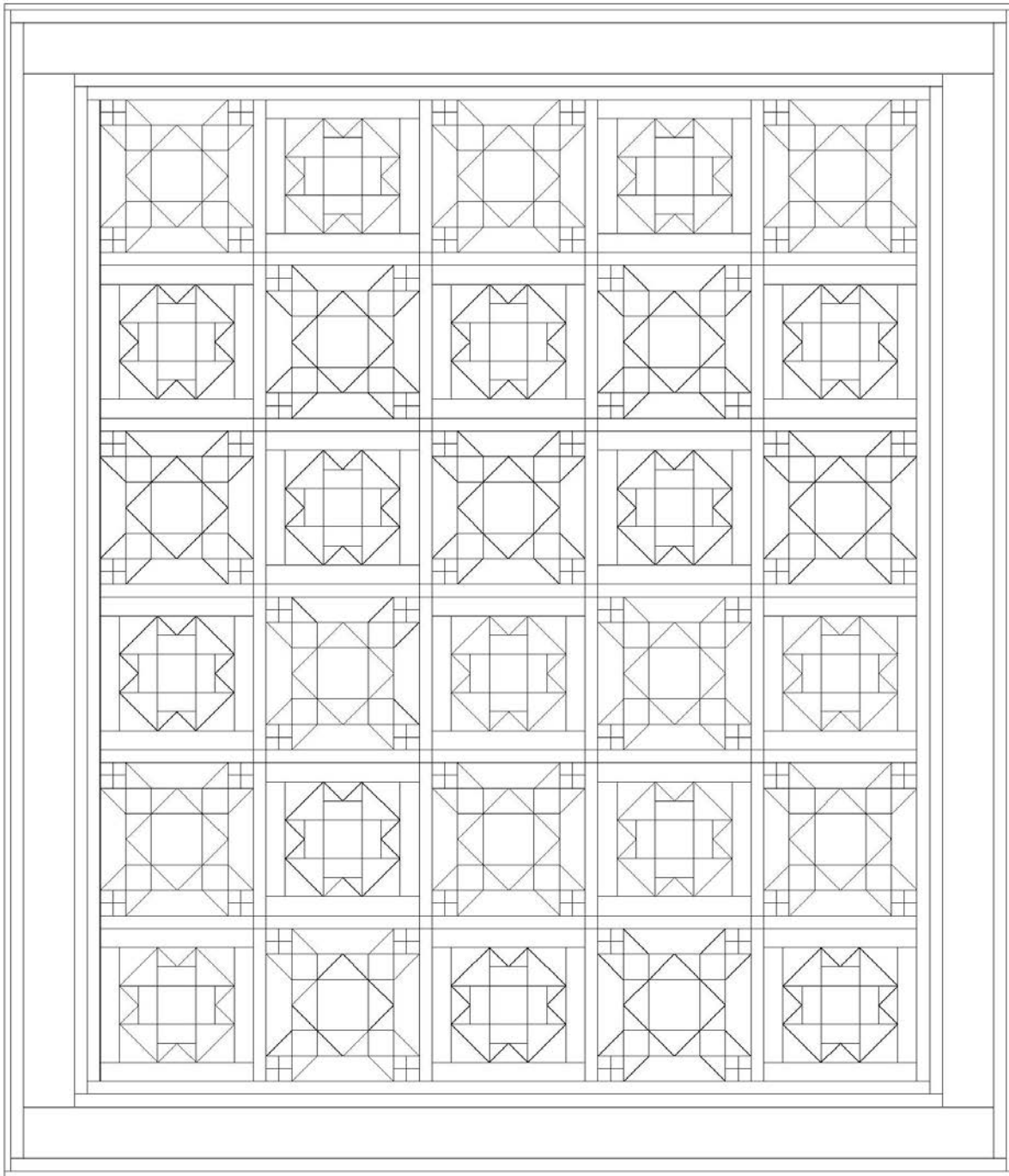
## Finishing

19. Create a quilt sandwich with the batting between the quilt top and the backing. Pin or baste layers together, mark quilting design, and quilt by hand or machine. When quilting is complete, remove pins or basting, and trim batting and backing even with raw edges of the quilt top.

20. Join the nine 2-1/2” 9570-65 Jot Dot – Olive binding strips together end to end using a diagonal seam to make one long strip. Fold in half lengthwise and press. Sew binding to the edges of the quilt, mitering corners, and overlapping ends. Fold binding to the back of the quilt and stitch it in place by hand to finish.

# Folk Garden - Quilt 2

Page 5



Quilt Diagram