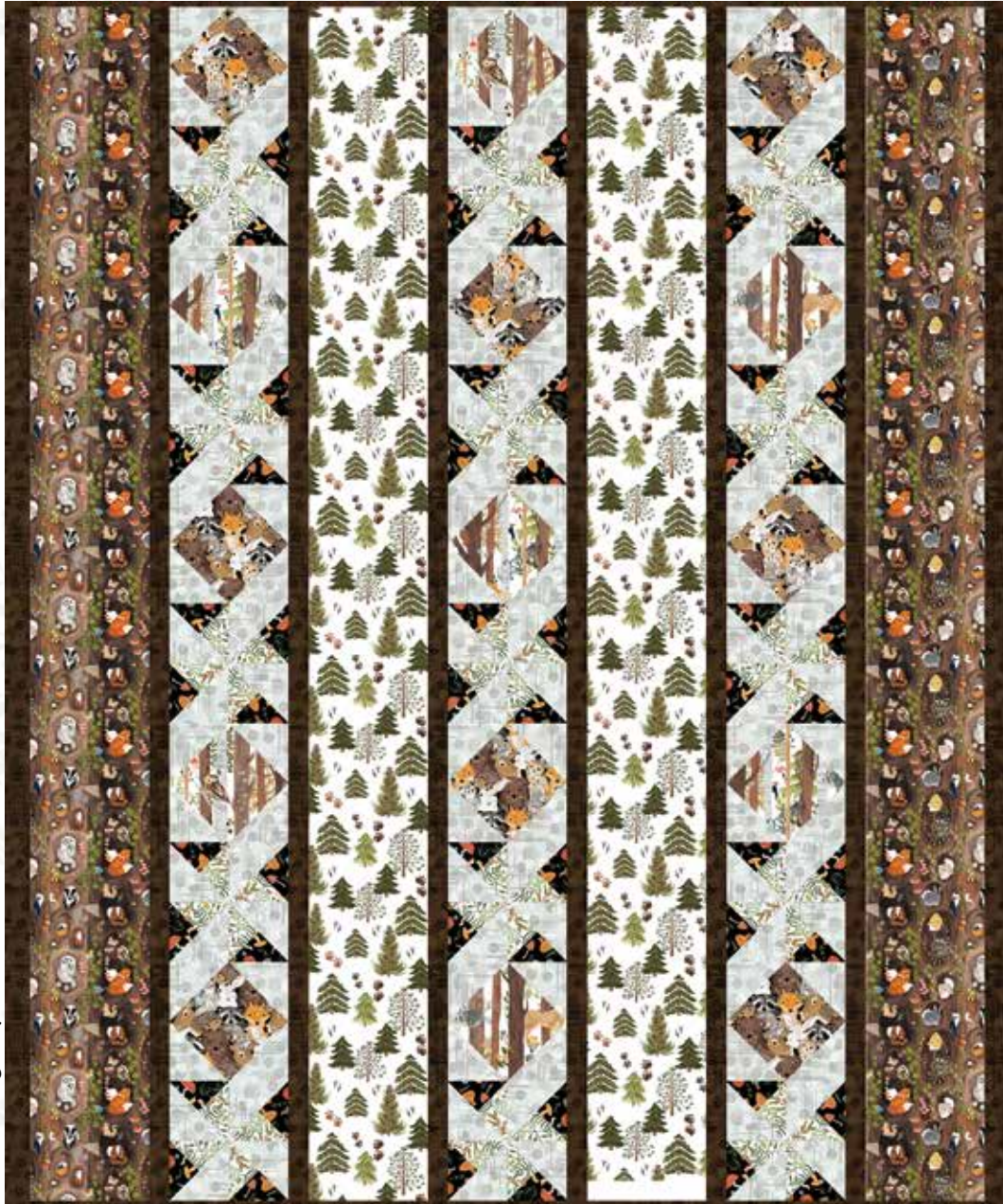


Forest Critters

A Free Project Sheet
NOT FOR RESALE

By Laura Konyndyk

Quilt 2



Quilt Design by Heidi Pridemore

Skill Level: Advanced Beginner



facebook

Finished Quilt Size: 50" x 60"

49 West 37th Street, 14th floor, New York, NY 10018

Toll Free: 800-294-9495

fax: 212-679-4578

www.blankquilting.net

Please check our website for pattern updates before starting this project.

FOREST CRITTERS Quilt 2

Fabrics in the Forest Critters Collection



Viney Leaves
Ivory – 2329-41



Wildflowers
Black – 2330-99



Mushrooms
Brown – 2331-39



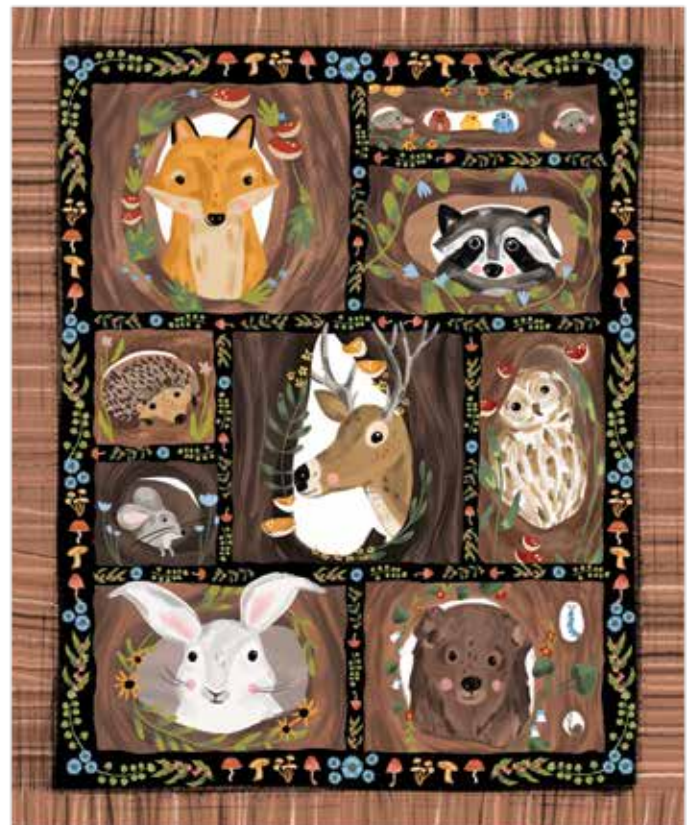
Woodland Animal Collage
Brown – 2332-39



Tossed Woodland Animals
Ivory – 2333-41



Woodland Animals in Tree Trunks
Brown – 2334-39



Woodland Animal Panel - 36 inches
Brown – 2337P-39



Woodland Animals with Trees
Ivory – 2335-41



Forest Trees with Animal Paw Prints
Ivory – 2336-41

Select Fabrics from
the Jot Dot Collection



Marshmallow
9570-09



Brown
9570-39



Light Gray
9570-90

Materials

½ yard	Woodland Animal Collage - Brown (A)	2332-39
1 yard	Jot Dot - Light Gray (B)	9570-90
½ yard	Woodland Animals with Trees - Ivory (C)	2335-41
⅜ yard	Mushrooms - Brown (D)	2331-39
⅜ yard	Viney Leaves - Ivory (E)	2329-41
1 ⅛ yards	Jot Dot - Brown (F)	9570-39*
1 ¾ yards	Woodland Animals in Tree Trunks - Brown (G)	2334-39
1 ¾ yards	Forest Trees with Animal Paw Prints - Ivory (H)	2336-41
3 ¼ yards	Tossed Woodland Animals - Ivory (Backing)	2333-41

*Includes binding

Batting: 58" x 68"

(Recommended: Air Lite® Colour Me 100% Cotton)

Cutting Instructions

Please note: All strips are cut across the width of fabric (WOF) from selvage to selvage unless otherwise noted.

From the Woodland Animal Collage - Brown (A), cut:

- (2) 6 ½" x WOF strips. Sub-cut (8) 6 ½" squares.

From the Jot Dot - Light Gray (B), cut:

- (5) 3 ½" x WOF strips. Sub-cut (60) 3 ½" squares.
- (3) 3 ⅞" x WOF strips. Sub-cut (30) 3 ⅞" triangles. Cut the squares across (1) diagonal to make (60) 3 ⅞" triangles.

From the Woodland Animals with Trees - Ivory (C), cut:

- (2) 6 ½" x WOF strips. Sub-cut (7) 6 ½" squares.

From the Mushrooms - Brown (D), cut:

- (2) 4 ¼" x WOF strips. Sub-cut (15) 4 ¼" squares. Cut the squares across both diagonals to make (60) 4 ¼" triangles.

From the Viney Leaves - Ivory (E), cut:

- (2) 4 ¼" x WOF strips. Sub-cut (15) 4 ¼" squares. Cut the squares across both diagonals to make (60) 4 ¼" triangles.

From the Jot Dot - Brown (F), cut:

- (12) 1 ½" x WOF strips. Sew the strips together end to end with diagonal seams and cut (8) 1 ½" x 60 ½" strips.
- (6) 2 ½" x WOF strips for the binding.

From the Woodland Animals in Tree Trunks - Brown (G), cut:

- (2) 6 ½" x 60 ½" Length of Fabric (LOF) strips.

From the Forest Trees with Animal Paw Prints - Ivory (H), cut:

- (2) 6 ½" x 60 ½" LOF strips.

From the Tossed Woodland Animals - Ivory (Backing), cut:

- (2) 58" x WOF strips for the backing. Sew the strips together and trim to make the 58" x 68" back.

Block Assembly

Note: The arrows figures represent the fabric print direction. Pay attention to the fabric and unit orientations when assembling the various components. Use a ¼" seam allowance with right sides together (RST) unless otherwise noted.

1. Place (1) 3 ½" Fabric B square on the top left corner of (1) 6 ½" Fabric A square, right sides together (Fig. 1). Sew across the diagonal of the smaller square from the upper right corner to the lower left corner (Fig. 1). Flip open the triangle formed and press. Trim away the excess fabric from behind the triangle ¼" away from the sewn seam (Fig. 2).

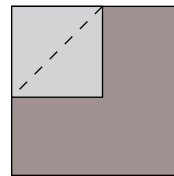


Fig. 1

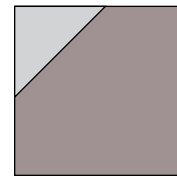


Fig. 2

2. Follow Figure 3 for the seam direction to add a 3 ½" Fabric B square to each of the remaining corners of the 6 ½" Fabric A square to make (1) Unit 1 square (Fig. 4).

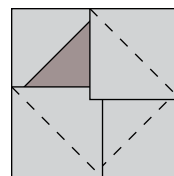


Fig. 3

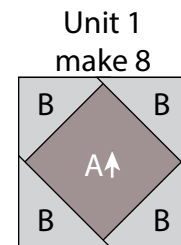


Fig. 4

3. Repeat Steps 1-2 to make (8) Unit 1 squares total.

4. Repeat Steps 1-2 and refer to Figure 5 for fabric identification, placement, seam direction and orientation to make (7) Unit 2 squares.

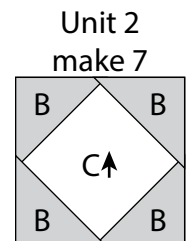
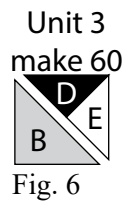
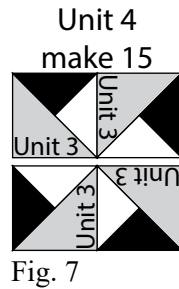


Fig. 5

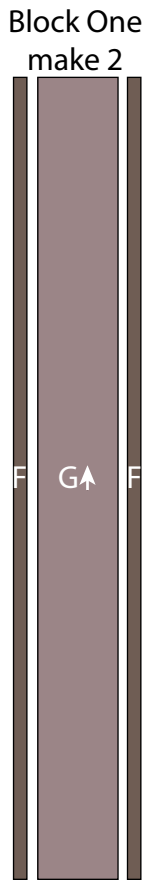
5. Sew (1) $4\frac{1}{4}$ " Fabric D triangle and (1) $4\frac{1}{4}$ " Fabric E triangle together along short sides. Sew (1) $3\frac{7}{8}$ " Fabric B triangle to the long side of the newly sewn triangle to make (1) $3\frac{1}{2}$ " Unit 3 square (Fig. 6). Repeat to make (60) Unit 3 squares total.



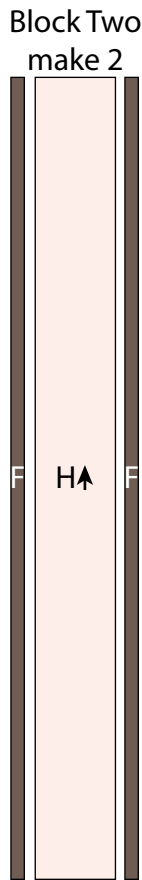
6. Sew together (4) Unit 3 squares into a 2×2 matrix to make (1) $6\frac{1}{2}$ " Unit 4 square (Fig. 7). Repeat to make (15) Unit 4 squares total.



7. Sew (1) $1\frac{1}{2}$ " x $60\frac{1}{2}$ " Fabric F strip to each side of (1) $6\frac{1}{2}$ " x $60\frac{1}{2}$ " Fabric G strip lengthwise to make (1) Block One Column (Fig. 9). Repeat to make a second Block One column.



8. Sew (1) $1\frac{1}{2}$ " x $60\frac{1}{2}$ " Fabric F strip to each side of (1) $6\frac{1}{2}$ " x $60\frac{1}{2}$ " Fabric H strip lengthwise to make (1) Block Two Column (Fig. 10). Repeat to make a second Block Two column.



9. Follow Figure 10 and sew together (10) assorted Units to make (1) Block Three column. Repeat to make a second Block Three column.

10. Follow Figure 11 and sew together (10) assorted Units to make (1) Block Four column.

Block Three
make 2



Fig. 10

Block Four



Fig. 11

Quilt Top Assembly

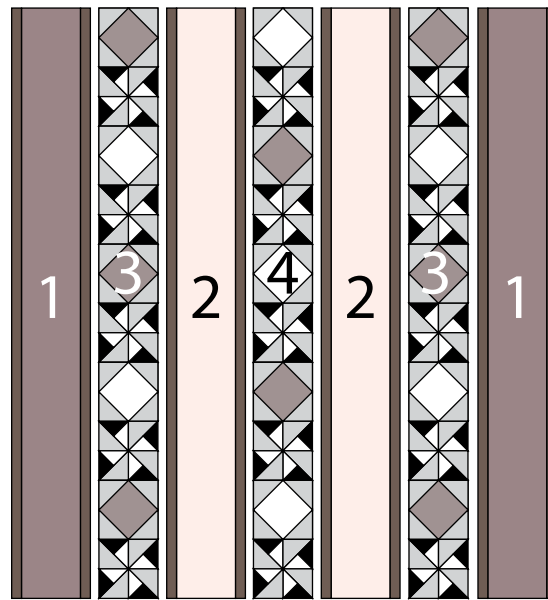
(Follow the Quilt Layout while assembling the quilt top.)

11. Sew together (1) Block One column, (1) Block Three column, (1) Block Two column, (1) Block Four column, (1) Block Two column, (1) Block Three column and (1) Block One column, lengthwise and in that order from left to right, to make the quilt top.

12. Layer and quilt as desired.

13. Sew the (6) 2 1/2" x WOF Fabric F strips together, end to end with 45-degree seams, to make the binding. Fold this long strip in half lengthwise with wrong sides together and press.

14. Bind as desired.



Quilt Layout

*Every effort has been made to ensure that all projects are error free. All the information is presented in good faith, however no warranty can be given nor results guaranteed as we have no control over the execution of instructions. Therefore, we assume no responsibility for the use of this information or damages that may occur as a result. When errors are brought to our attention, we make every effort to correct and post a revision as soon as possible. Please make sure to check www.blankquilting.net for pattern updates prior to starting the project. We also recommend that you test the project prior to cutting for kits. Finally, all free projects are intended to remain free to you and are **not for resale**.*