

Seaside Serenity

by A. J.'s Watercolor Studio



Quilt design by Denise Russell.

Quilt size: 63" x 77."

Skill Level: Intermediate.

Blank Quilting Corporation
49 West 37th Street ♦ New York, NY 10018
Tel: 800-294-9495 ♦ Fax: 212-679-4578
www.blankquilting.net

facebook

Free Project
NOT FOR RESALE

Seaside Serenity - Fabrics in the Collection



2020P-77 Sea Life Panel
Navy



2017-75 Sea Life Squares
Med. Blue



2019-75 Sea Life Stripe
Med. Blue



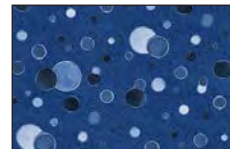
2008-77 Mixed Sea
Life - Navy



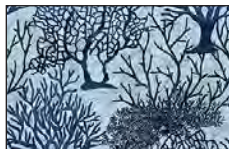
2009-70 Turtles
Lt. Blue



2011-75 Shells
Med. Blue



2012-77 Water
Bubbles - Navy



2013-70 Coral
Lt. Blue



2013-77 Coral
Navy



2014-41 Sand
Dollars - Ivory



2010-90 Sandpipers
Lt. Gray



2015-70 Fish
Lt. Blue



2016-41 Sea Life
Patch - Ivory



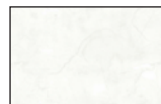
2018-75 Starfish
Med. Blue

Selected fabric from the
Starlet Collection



6383
Navy

Selected fabrics from the Urban Legend
Collection by Tana Muller



7101-01
White



7101-77
Navy

Seaside Serenity- Quilt 2 Page 1

Materials

Yardages and cutting instructions are based on 42" of usable fabric width

1/8 yard 6383 Starlet - Navy
1/4 yard 2011-75 Shells - Med. Blue
1/4 yard 2013-77 Coral - Navy
1/3 yard 2015-70 Fish - Lt. Blue
3/8 yard 2012-77 Water Bubbles - Navy
3/8 yard 2018-75 Starfish - Med. Blue
7/8 yard 2008-77 Mixed Sea Life - Navy
1 yard 7101-77 Urban Legend - Navy
1-1/8 yards 2009-70 Turtles - Lt. Blue
1-1/8 yards 2010-90 Sandpipers - Lt. Gray
1-1/8 yards 2014-41 Sand Dollars - Ivory
1-3/4 yards 7101-01 Urban Legend - White
4-1/8 yards 2016-41 Sea Life Patch - Ivory for backing
71" x 85" piece of Air Lite® Colour Me 100% Cotton batting
Paper for foundation piecing
Plastic for templates, fabric marker, sharp scissors

Cut Fabrics

Note: All strips are cut across the width of the fabric (WOF) from selvage to selvage unless otherwise indicated.

From 6383 Starlet - Navy:

*Cut one 3-3/8" x WOF strip. Sub-cut ten 3-3/8" squares.

From 2011-75 Shells - Med. Blue:

*Cut twenty quarter-circles using template A1.

From 2013-77 Coral - Navy:

*Cut two 3" x WOF strips. Sub-cut five 3" x 10-1/2" rectangles.

From 2015-70 Fish - Lt. Blue:

*Cut three 3" x WOF strips. Sub-cut ten 3" x 10-1/2" rectangles.

From 2012-77 Water Bubbles - Navy:

*Cut two 3" x WOF strips. Sub-cut five 3" x 10-1/2" rectangles.

*Cut three 1-1/2" x WOF strips for sashing.

From 2018-75 Starfish - Med. Blue:

*Cut one 3-3/8" x WOF strip. Sub-cut ten 3-3/8" squares.

*Cut three 2-1/2" x WOF strips for sashing.

From 2008-77 Mixed Sea Life - Navy:

*Cut three 3-3/8" x WOF strips. Sub-cut thirty 3-3/8" squares.

*Cut one 5-1/2" x WOF strip. Sub-cut five 5-1/2" squares.

*Cut seven 1-1/2" x WOF strips for border 3.

From 7101-77 Urban Legend - Navy:

*Cut three 3-1/2" x WOF strips. Sub-cut sixty 2" x 3-1/2" strips.

*Cut eight 2-1/2" x WOF strips for binding.

From 2009-70 Turtles - Lt. Blue:

*Cut three 3-3/8" x WOF strips. Sub-cut thirty 3-3/8" squares.

*Cut one 5-1/2" x WOF strip. Sub-cut five 5-1/2" squares.

*Cut twenty corners using template C1.

From 2010-90 Sandpipers - Lt. Gray:

***First** cut four 4-1/2" x WOF strips for top/bottom of border 2.

*Cut eight 4-1/2" x LOF strips for sides of border 2.

From 2014-41 Sand Dollars - Ivory:

*Cut two 3-3/8" x WOF strips. Sub-cut twenty 3-3/8" squares.

*Cut two 6-1/4" x WOF strips. Sub-cut ten 6-1/4" squares.

*Cut six 2-1/2" x WOF strips for sashing.

From 7101-01 Urban Legend - White:

*Cut seven 3" x WOF strips. Sub-cut fifty 3" squares, and twenty 3" x 5-1/2" rectangles.

*Cut two 3-3/8" x WOF strips. Sub-cut twenty 3-3/8" squares.

*Cut two 3-1/2" x WOF strips. Sub-cut forty 2" x 3-1/2" strips.

Seaside Serenity- Quilt 2

*Cut four 4" x WOF strips. Sub-cut forty 3-1/2" x 4" strips.

*Cut six 1-1/2" x WOF strips for border 1.

Assemble Blocks

Measurements include 1/4" seam allowances. Sew with right sides together unless otherwise stated. If no direction is specified, press the seam toward the darker fabric.

 <p>2008-77 Mixed Sea Life – Navy 2014-41 Sand Dollars – Ivory 7101-01 Urban Legend - White</p>	 <p>2009-70 Turtles - Lt. Blue 2014-41 Sand Dollars – Ivory 7101-01 Urban Legend - White</p>	 <p>6383 Starlet – Navy 2013-77 Coral – Navy 2015-70 Fish - Lt. Blue 7101-01 Urban Legend - White</p>
 <p>2018-75 Starfish - Med. Blue 2012-77 Water Bubbles – Navy 2015-70 Fish - Lt. Blue 7101-01 Urban Legend - White</p>	 <p>2009-70 Turtles - Lt. Blue 7101-77 Urban Legend – Navy 2011-75 Shells - Med. Blue 7101-01 Urban Legend - White</p>	

Table 1 – Fabric selection for each block.

1. Draw a diagonal line on the wrong side of the 3-3/8" 2014-41 Sand Dollars – Ivory squares. With right sides together, layer the marked Ivory squares atop the 3-3/8" 2008-77 Mixed Sea Life – Navy squares. Stitch 1/4" on each side of the marked line, cut on the drawn line, press each unit open with seams toward dark fabric, and trim dog ears (*figure 1*). Make a total of twenty 3-1/2" half-square triangles (HST).

Repeat this step with the remaining 3-3/8" 2014-41 Sand Dollars – Ivory squares and the 3-3/8" 2009-70 Turtles - Lt. Blue squares to make twenty 3-1/2" HST.



Figure 1 – Make 20 of each.

Seaside Serenity- Quilt 2 Page 3

2. Mark a diagonal line on the wrong side of the twenty remaining 3-3/8" 2008-77 Mixed Sea Life – Navy squares. With right sides together, place two marked Navy squares on opposite corners of one 6-1/4" 2014-41 Sand Dollars – Ivory square, making sure drawn lines are intersecting in the middle and noting that the corners of the small squares will overlap. Stitch 1/4" on each side of the marked line (a), cut on the drawn line (b), and press each unit open (c). Place one more marked Navy square on the corner of each unit, stitch as before (d), and cut. Press the seams open (e) to make four 3-1/2" x 5-1/2" flying-geese units. Repeat with the remaining 3-3/8" Navy and the 6-1/4" Ivory squares to make a total of twenty flying-geese units (*figure 2*).

Repeat this step with the 3-3/8" 2009-70 Turtles - Lt. Blue squares and the remaining 6-1/4" 2014-41 Sand Dollars – Ivory squares to make twenty flying geese units.

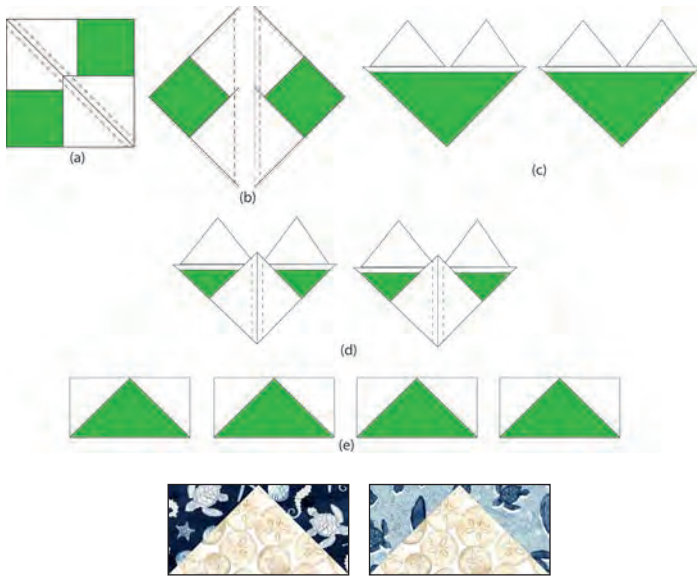


Figure 2 – Make 20 of each.

3. Draw a diagonal line on the wrong side of the 3" 7101-01 Urban Legend - White squares. With right sides together, place one marked White square on a corner of one 5-1/2" 2008-77 Mixed Sea Life – Navy square and stitch on the drawn line. Repeat with the opposite corner of the same square. Trim seam allowances to 1/4" and press open. Repeat with the other corners of the square (*figure 3*). Make five 5-1/2" patches.

Repeat this step with the remaining 3" 7101-01 Urban Legend - White squares and the 5-1/2" 2009-70 Turtles - Lt. Blue squares to make five patches.



Figure 3 – Make 5 of each.

4. Noting fabric orientation, sew one Step 2 flying geese unit to each side of the Step 3 units. Press the seams open. Repeat to make five Navy and five Lt. Blue center rows (*figure 4*).

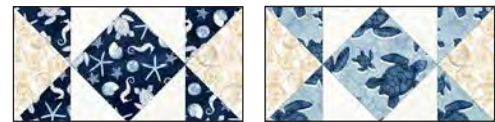


Figure 4 – Make 5 of each.

5. Noting fabric orientation, sew one Step 1 HST to opposite sides of one Step 2 flying geese. Press the seams to the center. Repeat to make ten Navy rows and ten Lt. Blue rows (*figure 5*).



Figure 5 – Make 10 of each.

6. Working with the Step 4 and Step 5 units, assemble five 10-1/2" blocks of each type as shown below (*figure 6*). Press the seams in one direction.



Figure 6 – Make 5 of each block.

7. Repeat Step 1 with the twenty 3-3/8" 7101-01 Urban Legend - White squares, the ten 3-3/8" 6383 Starlet – Navy squares, and ten 3-3/8" 2018-75 Starfish - Med. Blue squares to make twenty HST of each type (*figure 7, next page*).

Seaside Serenity- Quilt 2 Page 4



Figure 7 – Make 20 of each.

8. Sew the Step 7 units two by two to form rows, then sew two rows together to form the sails for each boat (figure 8). Make five 5-1/2” sails unit of each type.



Make 3 Make 2 Make 2 Make 3

Figure 8

9. Noting the orientation of the sails, sew one 3” x 5-1/2” 7101-01 Urban Legend – White rectangle to opposite sides of each unit (figure 9). Press the seams toward the rectangles.

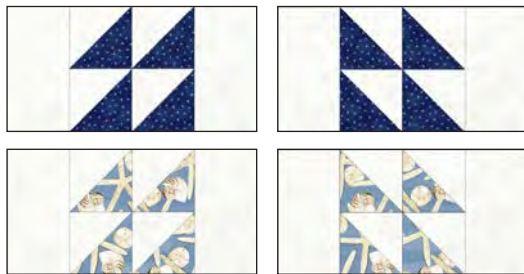


Figure 9

10. As in Step 3, draw a diagonal line on the wrong side of the 3-1/2” 7101-01 Urban Legend - White squares. With right sides together, place one marked White square on the left corner of one 3-1/2” x 10-1/2” 2013-77 Coral – Navy rectangle and stitch on the drawn line. Trim the seam allowance to 1/4” and press open. Repeat to make three units. Similarly, sew two White squares to the right side of the Navy rectangles to make two units (figure 10).

Repeat this step with the remaining 3-1/2” 7101-01 Urban Legend - White squares and the 3-1/2” x 10-1/2” 2012-77 Water Bubbles – Navy rectangles, sewing the White squares to the left side of two Navy rectangles and the right side of three Navy rectangles.



Make 3 Make 2



Make 2 Make 3

Figure 10

11. Sew a 3-1/2” x 10-1/2” 2015-70 Fish - Lt. Blue rectangle to the bottom of each Step 10 unit (figure 11). Press the seams toward the Lt. Blue rectangle.



Figure 11

12. Sew the Step 9 units to the top of the Step 11 units to make ten 10-1/2” boats as shown below (figure 12). Press the seams away from the sails.



Make 3 Make 2



Make 2 Make 3

Figure 12

13. Trace or print twenty copies of the B template. Paper piece each section referring to Table 2 below for fabric placement. Note that you will place the fabrics on the template’s backside and stitch the seams on the

Seaside Serenity- Quilt 2

printed side. Press open, trim, and remove the paper.

Trace templates A1 and C1 on the plastic to make templates. Cut on the outline. Trace the templates on the wrong side of the fabrics listed in Table 2 below using a fabric marker. Cut on the outline using sharp scissors.

Pin liberally and sew one A1 section to the bottom and one C1 section to the top of each paper-pieced B section to make twenty sun quarters. Press the seams away from the center.

Noting fabric orientation, sew the quarters together two by two to make ten rows, then sew the rows together two by two to make five 10-1/2" sun blocks (*figure 13*). Press the seams open.

Section A1: 2011-75 Shells - Med. Blue	Sections B1, B3, B5, B7: 7101-01 Urban Legend – White Sections B2, B4, B6: 7101-77 Urban Legend – Navy	Section C1: 2009-70 Turtles - Lt. Blue
--	---	--

Table 2. Fabric selection for each section of Block 3.

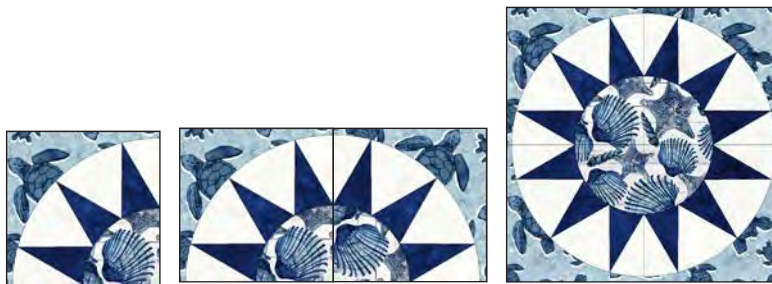


Figure 13 – Make 5 blocks.

Assemble Quilt Top

14. Make sashing rows 1,4, 5, and 8 by sewing together the six 2-1/2" 2014-41 Sand Dollars - Ivory strips end to end using a diagonal seam. Cut this long strip into four 50-1/2" strips.

15. Repeat Step 14 with the three 2-1/2" 2018-75 Starfish - Med. Blue strips to make sashing rows 2 and 7.

16. Repeat Step 14 with the three 1-1/2" 2012-77 Water Bubbles – Navy strips to make sashing rows 3 and 6.

17. Referring to the quilt photo and diagram for block and sashing placement, sew the block rows together, then sew the horizontal sashing strips to the block rows, and press seams in one direction.

18. For border 1, join the six 1-1/2" 7101-01 Urban Legend – White border strips together end to end using diagonal seams. Measure the vertical length of the quilt top through the center and cut two border strips that length. Sew one strip to each side of the quilt top. Measure the width of the quilt top through the center. Cut two border strips that length and sew one to the top and one to the bottom. Press the seams toward the borders.

19. For border 2, join the eight 4-1/2" 2010-90 Sandpipers - Lt. Gray border strips cut on the LOF end to end using straight seams. Measure the vertical length of the quilt top through the center, cut two border strips that length, and sew them to each side of the panel. Press the seams toward the border strips.

Seaside Serenity- Quilt 2

Next, join the four 4-1/2” 2010-90 Sandpipers - Lt. Gray border strips cut on the WOF end to end using straight seams. Measure the width of the quilt top through the center. Trim the two 4-1/2” border strips that length and sew one to the top and one to the bottom. Press the seams toward the borders.

20. Repeat Step 18 with the seven 1-1/2” 2008-77 Mixed Sea Life – Navy strips to make and add border 3.

Finishing

21. Create a quilt sandwich with the batting between the quilt top and the backing. Pin or baste layers

together, mark quilting design, and quilt by hand or machine. When quilting is complete, remove pins or basting, and trim batting and backing even with raw edges of the quilt top.

22. Join the eight 2-1/2” 7101-77 Urban Legend – Navy binding strips together end to end using a diagonal seam to make one long strip. Fold in half lengthwise and press. Sew binding to the edges of the quilt, mitering corners, and overlapping ends. Fold binding to the back of the quilt and stitch it in place by hand to finish.

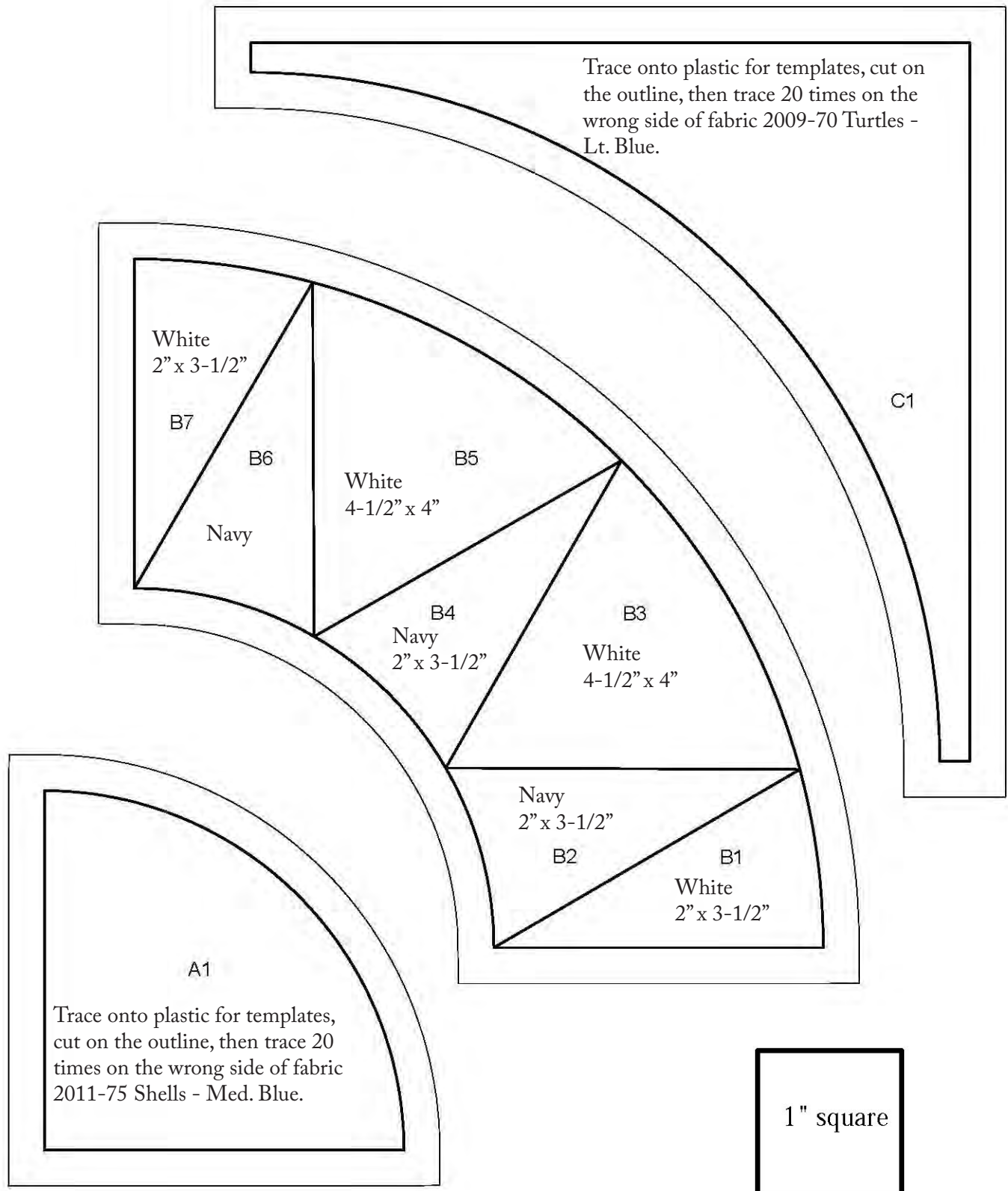


©2021 Blank Quilting Corporation

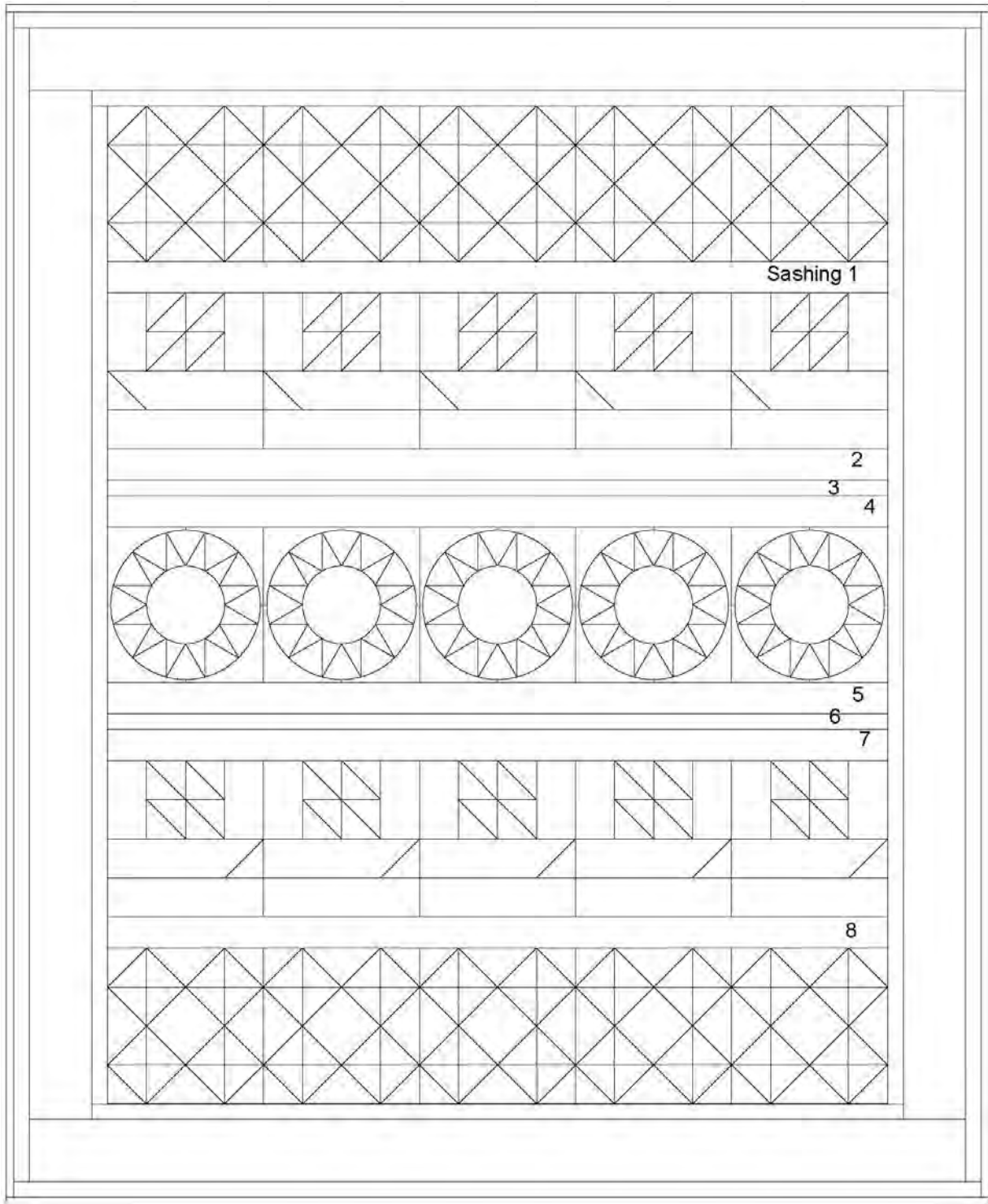
Every effort has been made to ensure that all projects are error free. All the information is presented in good faith; however, no warranty can be given nor results guaranteed as we have no control over the execution of instructions. Therefore, we assume no responsibility for the use of this information or damages that may occur as a result. When errors are brought to our attention, we make every effort to correct and post a revision as soon as possible. Please make sure to check www.blankquilting.net for pattern updates prior to starting the project. We also recommend that you test the project prior to cutting for kits. Finally, all free projects are intended to remain free to you and are not for resale.

Seaside Serenity- Quilt 2

Templates 100% Scale



Seaside Serenity- Quilt 2



Quilt Diagram