



Give Thanks II

Quilt 1
by Denise Russell



Quilt size: 52" x 72"

Skill Level: Advanced Beginner

Blank Quilting Corporation
49 West 37th Street ♦ New York, NY 10018
Tel: 800-294-9495 ♦ Fax: 212-679-4578
www.blankquilting.net

facebook

Free Project
NOT FOR RESALE

Give Thanks II - Fabrics in the Collection



9595P-33 Panel-Orange



9596-99 Blocks-Black



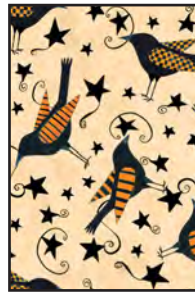
9597-99 Stripe-Black



9598-41 Scarecrows
Ivory



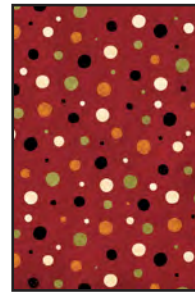
9599-99 Words
Black



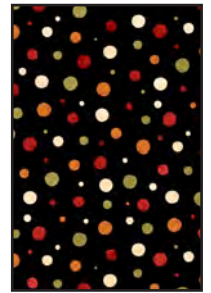
9600-41 Crows
Ivory



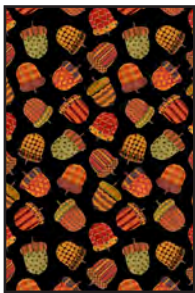
9601-41 Leaves
Ivory



9602-88 Dots
Rust



9602-99 Dots
Black



9603-99 Acorns
Black



9604-41 Turkeys
Ivory



9605-44 Trees
Amber



9606-99 Owls
Black

Selected fabrics from Urban Legend
by Tana Mueller



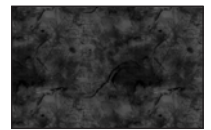
7101-33 Terra



7101-41 Ivory



7101-45 Gold



7101-98 Black

Materials

Yardages and cutting instructions are based on 42" of usable fabric width.

1 9595P-33 Panel-Orange
 1/4 yard Urban Legend 7101-45 Texture-Gold
 1/4 yard 9603-99 Acorns-Black
 1/4 yard Urban Legend 7101-33 Texture-Terra
 1/2 yard 9600-41 Crows-Ivory
 1/2 yard 9602-99 Dots-Black
 2/3 yard Urban Legend 7101-98 Texture-Black (includes binding)
 3/4 yard Urban Legend 7101-41 Texture-Ivory
 2-1/4 yards 9597-99 Stripe-Black
 3-1/2 yards 9606-99 Owls-Black for backing
 60" x 80" piece of batting
 Black thread for machine appliqué
 Fusible web

Cut Fabrics

Note: All strips are cut across the width of the fabric (WOF) from selvage to selvage unless otherwise noted. If cut across the length of the fabric (LOF), the LOF notation will be indicated.

From 9595P-33 Panel-Orange:

*Trim panel to 23-1/2" x 43-1/2".

Note: if panel cannot be trimmed as requested due to its printing process, increase the width of the Border 1 strips so quilt center measures 25-1/2" x 45-1/2" before adding the pieced border. (For instance, Border 1 may be cut at 1-3/4" for sides and 2" for top/bottom.)

From Urban Legend 7101-45 Texture-Gold:

*Cut one 3-3/8" x WOF strip. Sub-cut twelve 3-3/8" squares; cut once diagonally. (A)

From 9603-99 Acorns-Black:

*Cut one 3-3/8" x WOF strip. Sub-cut twelve 3-3/8" squares; cut once diagonally. (B)

From Urban Legend 7101-33 Texture-Terra:

*Cut two 3-3/8" x WOF strips. Sub-cut sixteen 3-3/8" squares; cut once diagonally. (C)

From 9600-41 Crows-Ivory:

*Cut five 2-1/2" x WOF strips for border 3.

From 9602-99 Dots-Black:

*Cut two 3-3/8" x WOF strips. Sub-cut sixteen 3-3/8" squares; cut once diagonally. (D)

*Cut four 1-1/2" x WOF strips for border 1.

From Urban Legend 7101-98 Texture-Black:

*Cut seven 2-1/2" x WOF strips for binding.

*Cut four stars using template.

From Urban Legend 7101-41 Texture-Ivory:

*Cut five 3-3/8" x WOF strips. Sub-cut into fifty-six 3-3/8" squares; cut once diagonally. (E)

*Cut one 5-1/2" x WOF strip. Sub-cut four 5-1/2" squares.

From 9597-99 Stripe-Black:

*Cut four 7" x LOF strips for border 4.

Assemble Blocks

Note: Measurements include 1/4" seam allowances. Sew with right sides together unless otherwise stated. If no direction is specified, press seams toward darker fabric.

1. Sew together the Urban Legend Texture Gold triangles A and the Acorns Black triangles B. Press seams to one direction. Sew the units together in pairs (*figure 1*). Press seams open and trim ears. Repeat to make twelve 4" patches.



Figure 1

2. Repeat step 1 with the Urban Legend Texture-Terra triangles C and the Dots-Black triangles D (*figure 2*). Make sixteen patches.



Figure 2

3. Sew an Urban Legend Texture-Ivory triangle E to opposite sides of a step 1 unit. Press seams away from center. Sew two more Urban Legend Texture-Ivory triangles E to the remaining sides of the same square (*figure 3*). Press. Repeat to make twelve 5-1/2" squares.



Figure 3

4. Repeat step 3 with the step 2 units and the remaining Urban Legend Texture-Ivory triangles E (*figure 4*). Make sixteen 5-1/2" squares.



Figure 4

5. Layer the fusible web onto the star shape and trace four times. Cut each shape 1/8" outside the outline and fuse to the wrong side of the Urban Legend Texture-Black. Cut on the outline and remove paper backing. Fold the Urban Legend Texture-Ivory 5-1/2" squares in half twice and crease the folds to mark the center. Position stars on squares using the creased guidelines and fuse them according to manufacturer's instructions (*figure 5*). Machine appliqué using matching thread and the blanket stitch. Make four star corner blocks.



Figure 5

Assemble Quilt Top

6. Join the Dots-Black 1-1/2" border strips together end to end using diagonal seams. Cut two strips 43-

1/2" long and sew them to each side of the panel. Press seam allowances toward the border strips. Measure the width of the quilt top through the center. Cut two border 1 strips that length and sew one to the top and one to the bottom. Press the seams toward the borders. Quilt center measures 25-1/2" x 45-1/2" up to here.

7. Referring to the quilt photo and diagram for block placement, arrange nine blocks for each side of the quilt. Sew blocks together and sew one border strip to each side of the quilt center. Press seam allowances toward quilt center.

8. Repeat step 7 with the four star corner blocks and the remainder blocks, and sew one border strip to the top and one to the bottom of the quilt center.

9. Repeat step 6 with the Crows-Ivory 2-1/2" strips to make and add border 3.

10. For border 4, mark the quilt center along the sides, top, and bottom. Mark the center of each Stripe-Black 7" border strip. Matching the centers, sew each border strip in place beginning and ending exactly 1/4" from the corners. DO NOT trim the extra length.

11. To miter the borders, fold one corner of the quilt on a 45° angle so that the border strips are directly on top of one another and the seams nest together. Place your rotary ruler on the fold of the quilt so that the long edge is against the fold and the 45° line is on the side of the seam. Draw a line from the corner of the quilt top to the outside edge of the border. Pin the borders together. Position your needle on the inside corner where the border meets the quilt. Stitch directly on the line you have drawn to the outside edge of the border. Trim the excess fabric leaving a 1/4" seam allowance. Press. Repeat the process for the remaining three corners of the quilt.

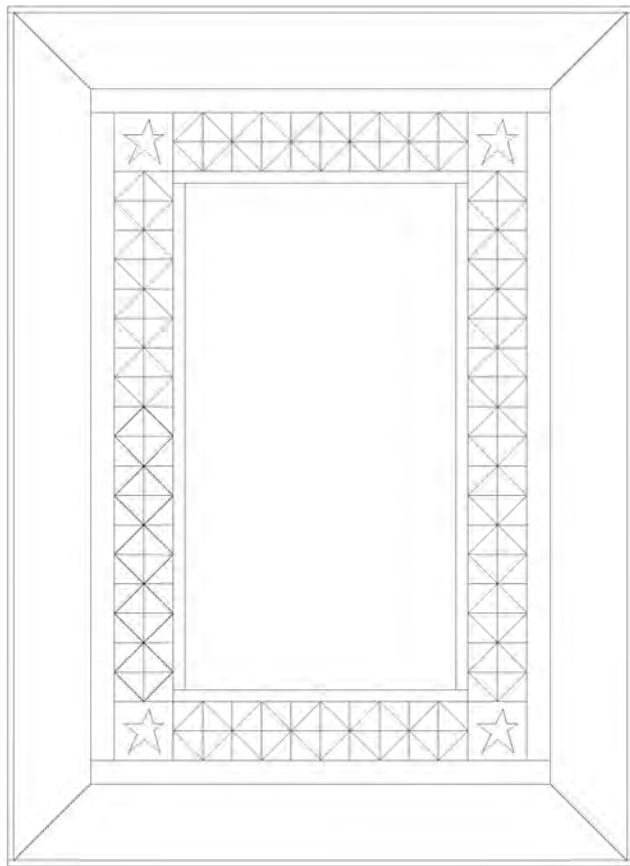
Finishing

12. Create a quilt sandwich with the batting between the quilt top and the backing. Pin or baste layers together, mark quilting design, and quilt by hand or

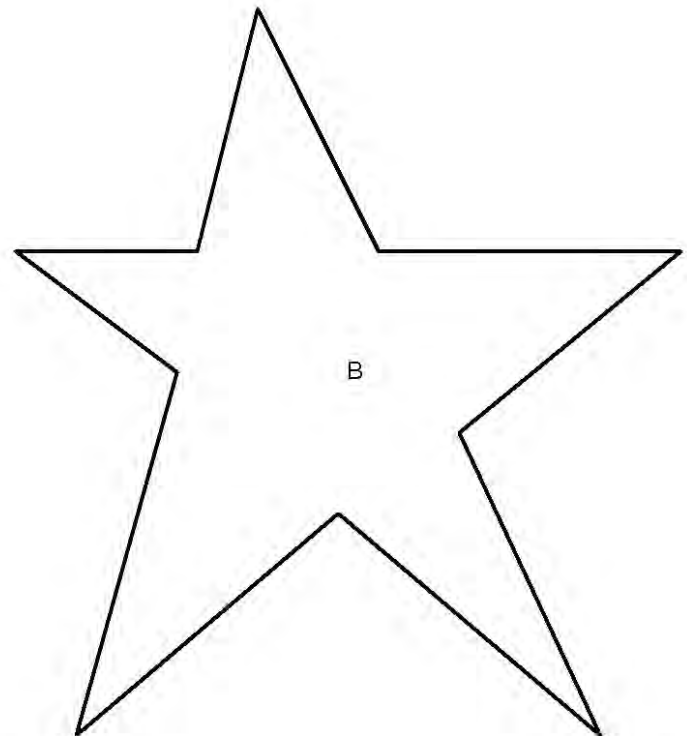
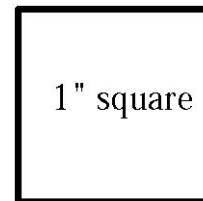
machine. When quilting is complete, remove pins or basting, and trim batting and backing even with raw edges of the quilt top.

13. Join the seven Urban Legend Texture-Black 2-1/2" binding strips together end to end using a diagonal

seam to make one long strip. Press in half lengthwise. Sew binding to the edges of the quilt top, mitering corners, and overlapping ends. Fold binding to the back of the quilt and stitch it in place by hand to finish.



Quilt Diagram



©2018 Blank Quilting Corporation

Every effort has been made to ensure that all projects are error free. All the information is presented in good faith; however, no warranty can be given nor results guaranteed as we have no control over the execution of instructions. Therefore, we assume no responsibility for the use of this information or damages that may occur as a result. When errors are brought to our attention, we make every effort to correct and post a revision as soon as possible. Please make sure to check www.blankquilting.net for pattern updates prior to starting the project. We also recommend that you test the project prior to cutting for kits. Finally, all free projects are intended to remain free to you and are not for resale.