



Give Thanks II

Table Runner Set
by Denise Russell



Table Runner size: 25" x 54"

Skill Level: Advanced Beginner



Placemat size: 12-1/2" x 17-1/2"

Blank Quilting Corporation
49 West 37th Street ♦ New York, NY 10018
Tel: 800-294-9495 ♦ Fax: 212-679-4578
www.blankquilting.net

facebook

Free Project
NOT FOR RESALE

Give Thanks II - Fabrics in the Collection



9595P-33 Panel-Orange



9596-99 Blocks-Black



9598-41 Scarecrows
Ivory



9597-99 Stripe-Black



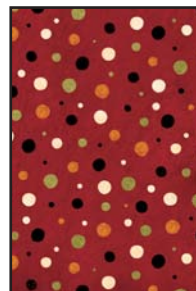
9599-99 Words
Black



9600-41 Crows
Ivory



9601-41 Leaves
Ivory



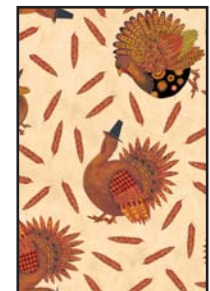
9602-88 Dots
Rust



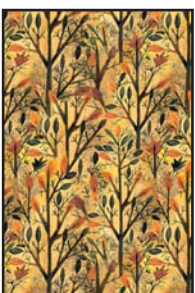
9602-99 Dots
Black



9603-99 Acorns
Black



9604-41 Turkeys
Ivory



9605-44 Trees
Amber



9606-99 Owls
Black

Selected fabrics from Urban Legend by Tana Mueller



7101-33 Terra



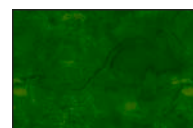
7101-35 Fawn



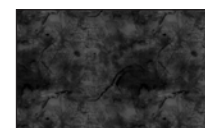
7101-44 Parchment



7101-45 Gold



7101-66 Hunter



7101-98 Black

Give Thanks II - Table Runner Set

Page 1

Materials

Yardages and cutting instructions are based on 42" of usable fabric width.

1/8 yard 9606-99 Owls-Black
1/8 yard Urban Legend 7101-66 Texture-Hunter
1/4 yard 9599-99 Words-Black
1/4 yard 9602-88 Dots-Rust
1/4 yard Urban Legend 7101-35 Texture-Fawn
1/4 yard 9604-41 Turkeys-Ivory
1/4 yard 9601-41 Leaves-Ivory
1/3 yard Urban Legend 7101-33 Texture-Terra
1/2 yard Urban Legend 7101-44 Texture-Parchment
1/2 yard Urban Legend 7101-98 Texture-Black (includes binding)
1-1/8 yards Urban Legend 7101-45 Texture-Gold
1-1/3 yards 9596-99 Blocks-Black
1-1/2 yards 9603-99 Acorns-Black
2-1/2 yards 9605-44 Trees-Amber for backing
Fusible web
Plastic for template
Matching thread
33" x 62" piece of batting for runner
Six 13-1/2" x 18-1/2" pieces of batting for placemats

Cut Fabrics

Note: *All strips are cut across the width of the fabric (WOF) from selvage to selvage unless otherwise noted. If cut across the length of the fabric (LOF), the LOF notation will be indicated.*

From 9606-99 Owls-Black:

*Cut one 2-5/8" x WOF strip. Sub-cut eight 2-5/8" squares.

From Urban Legend 7101-66 Texture-Hunter:

*Cut four 2-5/8" squares.

*Cut six appliqué centers with template A.

From 9599-99 Words-Black:

*Cut four 4-1/2" squares.

From 9602-88 Dots-Rust:

*Cut four 2-5/8" squares.

*Cut twenty-four leaves with template C.

From Urban Legend 7101-35 Texture-Fawn:

*Cut two 2-1/2" x WOF strips. Sub-cut sixteen 2-1/2" squares.

From 9604-41 Turkeys-Ivory:

*Cut two 4-1/2" squares.

From 9601-41 Leaves-Ivory:

*Cut two 2-3/8" x WOF strips. Sub-cut thirty-two 2-3/8" squares; cut once diagonally. (C)

From Urban Legend 7101-33 Texture-Terra:

*Cut three 2-1/2" x WOF strips. Sub-cut thirty-two 2-1/2" squares.

From Urban Legend 7101-44 Texture-Parchment:

*Cut one 2-7/8" x WOF strip. Sub-cut twelve 2-7/8" squares; cut once diagonally. (A)

*Cut two 4-1/2" x WOF strips. Sub-cut twenty-four 2-1/2" x 4-1/2" rectangles.

From Urban Legend 7101-98 Texture-Black:

*Cut two 1-7/8" x WOF strips. Sub-cut twenty-four 1-7/8" squares; cut once diagonally. (B)

*Cut four 2-1/2" x WOF strips for binding.

From Urban Legend 7101-45 Texture-Gold:

*Cut one 1-1/2" x WOF strip. Sub-cut twenty-four 1-1/2" squares.

*Cut twelve 1-1/4 x WOF strips for placemats border 1.

*Cut two 8-1/2" x WOF strips. Sub-cut six 8-1/2" squares.

From 9596-99 Blocks-Black:

*Fussy-cut twelve 6-1/2" x 8-1/4" rectangles.

From 9603-99 Acorns-Black:

*Cut twenty-four leaves with template B.

*Cut twelve 2-1/2" x WOF strips for placemats border.

*Cut four 3-1/2" x WOF strips for table runner border.

From 9605-44 Trees-Amber:

*Cut two 18" x WOF strips. Sub-cut six 13-1/2" x 18-1/2" rectangles for placemats backing.

*Use remainder for table runner backing.

Assemble Blocks

Note: Measurements include 1/4" seam allowances. Sew with right sides together unless otherwise stated. If no direction is specified, press seams toward darker fabric.

Table Runner

1. Draw a diagonal line on the wrong side of the Urban Legend Texture-Terra 2-1/2" squares. With right sides together and noting the line direction, layer a marked Urban Legend Texture-Terra square on the left short end of a Urban Legend Texture-Parchment 2-1/2" x 4-1/2" rectangle and stitch on the drawn line. Trim 1/4" away from the seam line and press open. In the same manner, stitch another Urban Legend Texture-Parchment square to the right short end of the same rectangle (*figure 1*). Repeat to make a total of sixteen flying-geese units.



Figure 1

2. Repeat step 1 with the Urban Legend Texture-Fawn 2-1/2" squares and the remaining Urban Legend Texture-Parchment 2-1/2" x 4-1/2" rectangles (*figure 2*). Make a total of eight flying-geese units.



Figure 2

3. Sew one Urban Legend Texture-Black triangle B to one side of one Urban Legend Texture-Gold 1-1/2" square. Press open. Sew another Urban Legend Texture-Black triangle B to the adjacent side of the same square (*figure 3*). Press open and trim ears. Repeat to make twenty-four patches.



Figure 3

4. Sew one Urban Legend Texture-Parchment triangle A to each step 3 patch. Press open and trim to 2-1/2" square (*figure 4*).



Figure 4

5. Sew one step 1 flying geese unit to opposite sides of a Words-Black 4-1/2" square (*figure 5*). Press seams toward center. Repeat to make four block centers.

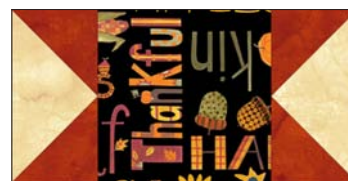


Figure 5

6. Repeat step 5 with the step 2 flying-geese units and the Turkeys-Ivory 4-1/2" squares (*figure 6*). Make two block centers.

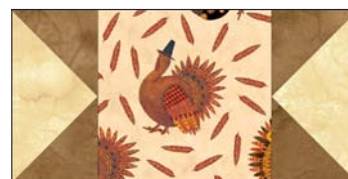


Figure 6

7. Sew two step 4 patches to both sides of all the remaining flying-geese units. Press seams away from flying geese (*figures 7 and 8*). Make eight strips with the Terra flying geese and four strips with the Fawn flying-geese.



Figure 7 – Make 8



Figure 8 – Make 4

8. Sew the steps 5 and 6 block centers with the matching step 7 strips to make the blocks as shown below (*figures 9 and 10, next page*). Press seams open.



Figure 9 – Make 4



Figure 10 – Make 2

9. Trace shapes A, B, and C on the plastic for templates. Cut on the outline. Trace templates on the smooth side of the fusible web in the amounts listed below. Cut each shape 1/8" outside the outline. Fuse the shapes to the wrong side of the fabrics, cut on the outline, and remove paper backing.

Shape A: trace and cut 6; fuse to Urban Legend Texture-Hunter.

Shape B: trace and cut 24; fuse to Acorns-Black.

Shape C: trace and cut 24; fuse to Dots-Rust.

10. Fold and crease the Urban Legend Texture-Gold 8-1/2" squares in half twice, then diagonally twice. Position appliqué shapes on squares using the creased guidelines and fuse them according to manufacturer's instructions (*figure 11*). Machine appliqué using matching thread and the blanket stitch. Make six blocks.



Figure 11

11. Sew a Leaves-Ivory triangle C to opposite sides of an Owls-Black 2-5/8" square. Press seams away from

center. Sew two more Leaves-Ivory triangles C to the other sides of the same square (*figure 12*). Press. Repeat to make eight 3-1/2" squares.



Figure 12

12. Repeat step 11 with the remaining Leaves-Ivory triangles C and the Urban Legend Texture-Hunter and Dots-Rust 2-5/8" squares (*figures 13 and 14*). Make 4 blocks of each fabric combination.

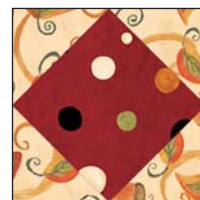


Figure 13



Figure 14

Assemble Table Runner

13. Referring to the table runner photo and diagram for block placement, arrange six 8-1/2" blocks in two columns. Sew blocks together in each column and press seam allowances in one direction.

14. Repeat step 13 with the step 11 and 12 blocks.

15. Sew the three columns together and press seams open.

16. For the border, sew the Owls-Black 3-1/2" strips together end to end using diagonal seams. Measure the vertical length of the table runner through the center and cut two border strips that length. Sew one strip to each side of the runner. Press seam allowances toward

the border strips. Measure the width of the runner through the center. Cut two border strips that length and sew one to the top and one to the bottom. Press the seams toward the borders.

Finishing

17. Create a quilt sandwich with the batting between the table runner and the backing. Pin or baste layers together, mark quilting design, and quilt by hand or machine. When quilting is complete, remove pins or basting, and trim batting and backing even with raw edges of the quilt top.

18. Join the eight Urban Legend Texture-Black 2-1/2" binding strips together end to end using a diagonal seam to make one long strip. Press in half lengthwise. Sew binding to the edges of the table runner, mitering corners, and overlapping ends. Fold binding to the back of the runner and stitch it in place by hand to finish.

Placemats

1. Sew Blocks-Black 6-1/2" x 8-1/4" rectangles two by two (refer to *figure 1* for block placement). Press seams to one direction.

2. Join the twelve Urban Legend Texture-Gold 1-1/4" strips together end to end using diagonal seams. Sew a strip to each side of the placemat centers and trim. Press seam allowances toward the border strips. Repeat with the top and bottom of each placemat center. Press the seams toward the borders.

3. Repeat step 2 with the Acorns-Black 2-1/2" strips to make and add border 2 to placemats.

Finishing

4. Layer the placemat centers right sides together atop the Trees-Amber 13-1/2" x 18-1/2" rectangles. Layer a piece of batting on top. Sew around the placemats using a 1/4" seam allowance and leaving a 4" opening. Trim placemats at the seam allowance.

5. Turn placemats inside out, close opening with a hand stitch (or pin to close them when topstitching), press, and topstitch 1/2" inside the edge.

6. Quilt as desired.



Figure 1

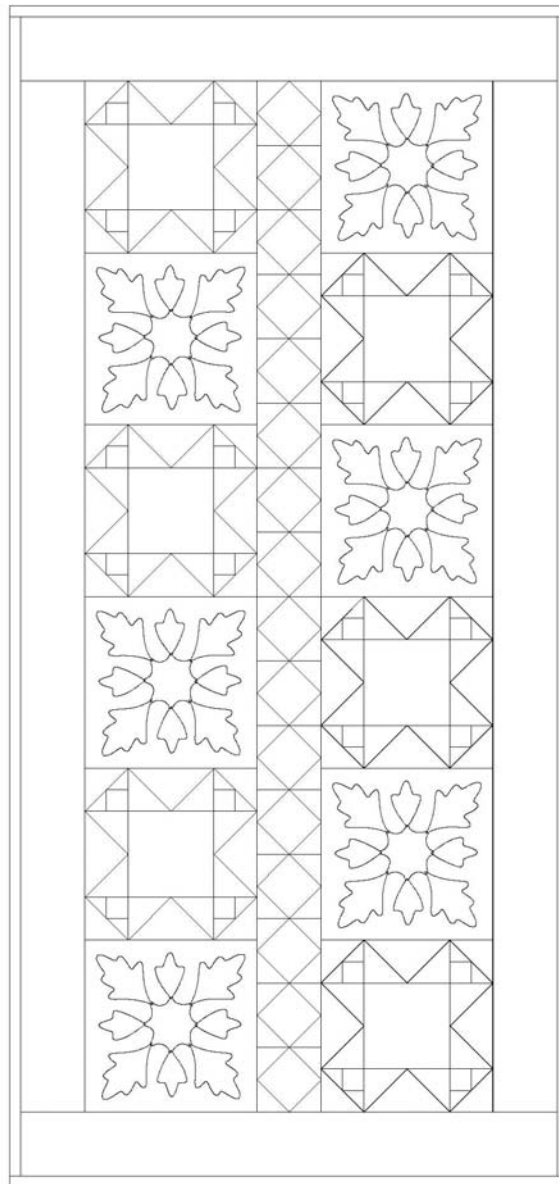
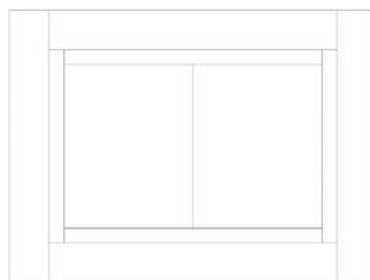
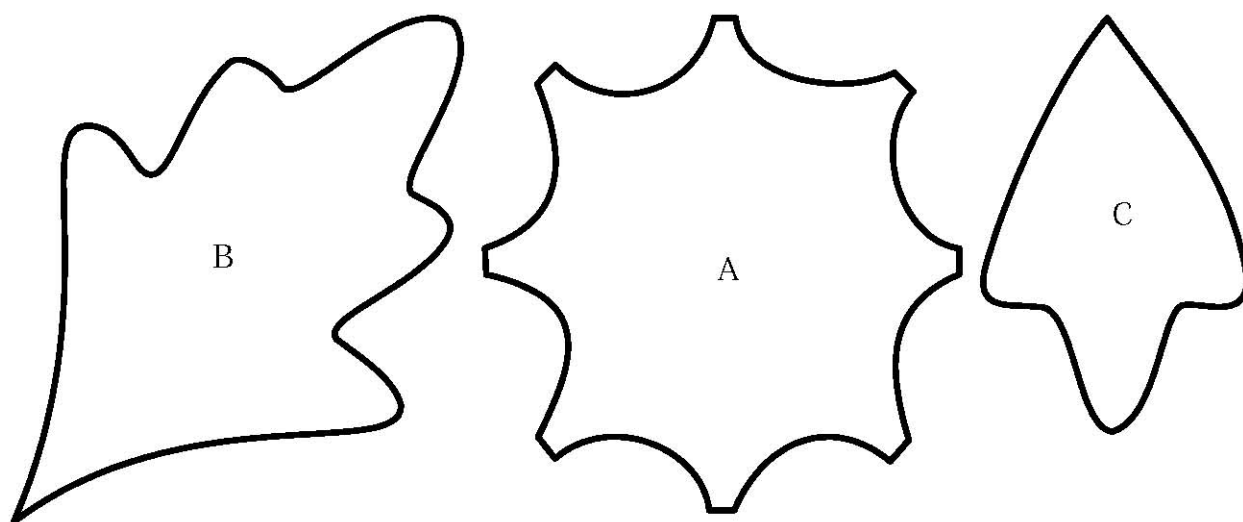


Table Runner Diagram



Placemat Diagram

Templates



©2018 Blank Quilting Corporation

Every effort has been made to ensure that all projects are error free. All the information is presented in good faith; however, no warranty can be given nor results guaranteed as we have no control over the execution of instructions. Therefore, we assume no responsibility for the use of this information or damages that may occur as a result. When errors are brought to our attention, we make every effort to correct and post a revision as soon as possible. Please make sure to check www.blankquilting.net for pattern updates prior to starting the project. We also recommend that you test the project prior to cutting for kits. Finally, all free projects are intended to remain free to you and are not for resale.