

# I'll Drink to That

A Free Project Sheet  
NOT FOR RESALE

By Yolanda Fundora

Wine Bags

Design by Heidi Pridemore



Version #1



Version #2



Version #3

Skill Level: Advanced Beginner



facebook

Finished Bag Size: 6" x 11"  
49 West 37th Street, 14th floor, New York, NY 10018  
Toll Free: 800-294-9495  
fax: 212-679-4578  
www.blankquilting.net

Please check our website for pattern updates before starting this project.



# I'LL DRINK TO THAT Wine Bags

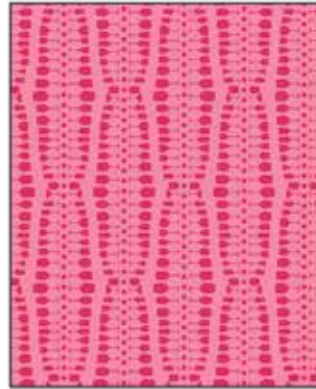
## Fabrics in the I'll Drink to That Collection



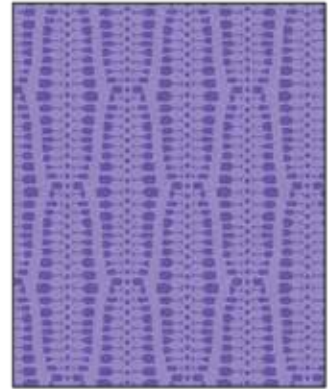
Wine Glasses - Light Pink  
1732-20



Wine Glasses - Light Green  
1732-60



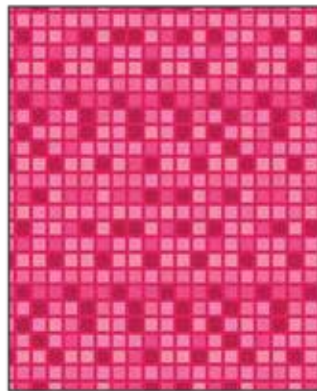
Wine Lace - Light Pink  
1733-20



Wine Lace - Light Purple  
1733-50



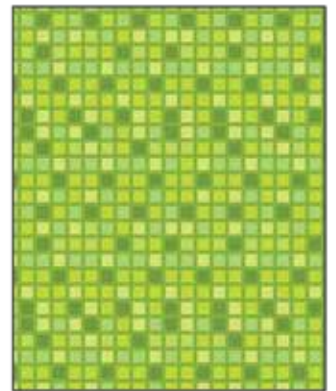
Wine Lace - Light Green  
1733-60



Tiles - Pink  
1734-22



Tiles - Purple  
1734-55



Tiles - Green  
1734-66



Grapes - Light Pink  
1735-20



Grapes - Light Green  
1735-60



Wine Coasters - Pink  
1736-22

Select Fabric from the  
Starlet Collection



Ivory  
6383-Ivory

### Materials

#### Wine Bag #1

¼ yard	Tiles - Pink (A)	1734-22
⅓ yard	Wine Lace - Light Purple (B)	1733-50
¼ yard	Grapes - Light Pink (C)	1735-20

#### Wine Bag #2

¼ yard	Tiles - Green (D)	1734-66
⅓ yard	Wine Lace - Light Purple (E)	1733-50
¼ yard	Wine Glasses - Light Green (F)	1732-60

#### Wine Bag #3

⅓ yard	Wine Glasses - Light Green (G)	1732-60
⅓ yard	Wine Lace - Light Pink (H)	1733-20

### Cutting Instructions

Please note: All strips are cut across the width of fabric (WOF) from selvage to selvage unless otherwise noted.

#### Wine Bag #1

##### From the Tiles - Pink (A), cut:

- (1) 4 ½" x WOF strip. Sub-cut into (2) 4 ½" x 6 ½" strips.

##### From the Wine Lace - Light Purple (B), cut:

- (1) 6 ½" x WOF strip. Sub-cut into (2) 6 ½" x 11 ½" strips and (2) 1 ¼" x 6 ½" strips.
- (1) 2" x WOF strip

##### From the Grapes - Light Pink (C), cut:

- (1) 6 ¾" x WOF strip. Sub-cut into (2) 6 ¾" x 6 ½" strips.

#### Wine Bag #2

##### From the Tiles - Green (D), cut:

- (1) 4 ½" x WOF strip. Sub-cut into (2) 4 ½" x 6 ½" strips.

##### From the Wine Lace - Light Purple (E), cut:

- (1) 6 ½" x WOF strip. Sub-cut into (2) 6 ½" x 11 ½" strips and (2) 1 ¼" x 6 ½" strips.
- (1) 2" x WOF strip

##### From the Wine Glasses - Light Green (F), cut:

- (1) 6 ¾" x WOF strip. Sub-cut into (2) 6 ¾" x 6 ½" strips.

#### Wine Bag #3

##### From the Wine Glasses - Light Green (G), cut:

- (1) 3 ½" x WOF strip. Sub-cut into (2) 3 ½" x 6 ½" strips.

##### From the Wine Lace - Light Pink (H), cut:

- (1) 8 ½" x WOF strip. Sub-cut into (2) 6 ½" x 11 ½" strips and (2) 6 ½" x 8 ½" strips.
- (1) 2" x WOF strip

### Bag Assembly

Note: The arrows figures represent the fabric print direction. Pay attention to the fabric orientations when assembling the various components. Use a ¼" seam allowance with right sides together (RST) unless otherwise noted.

1. Sew (1) 4 ½" x 6 ½" Fabric A strip to the bottom of (1) 1 ¼" x 6 ½" Fabric B strip. Sew (1) 6 ¾" x 6 ½" Fabric C strip to the top of the Fabric B strip to make the Outer Bag #1 front (Fig. 1). Repeat to make the Outer Bag #1 back.
2. On the wrong side of the Outer Bag front, measure down from the top edge 1" and mark. Measure down ¾" from the first mark and make a second mark. Repeat on the other side of the bag front. This marks the top and bottom of the drawstring opening.
3. Place the Outer Bag #1 front and Outer Bag #1 back right sides together. Starting at the top of one side, sew down each side and across the bottom. Do not sew across the ¾" openings marked in Step 2 to make the Outer Bag #1 (Fig. 2).

Outer Bag #1 Front/Back  
make 2

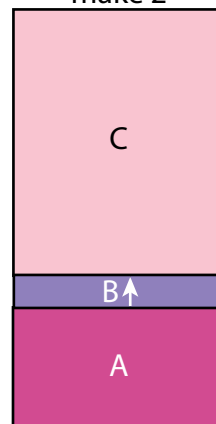


Fig. 1

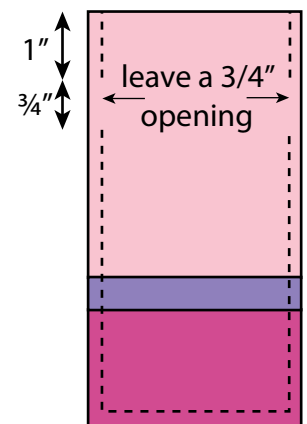


Fig. 2

4. Turn the Outer bag right side out and press. Make sure to tuck in the two drawstring openings. Top Stitch each opening to create a finished edge.

5. Place the 6 ½" x 11 ½" Fabric B strips, right sides together. Stitch down each side and across the bottom, leaving a 3"- 4" opening for turning to make the Bag Lining (Fig. 3).

Bag Lining

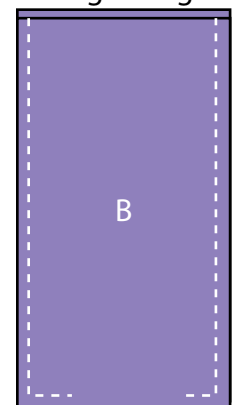


Fig. 3

6. Slide the bag lining over the Outer Bag, right sides together. Align the side seams on both pieces and sew around the top edge of the bag and lining. Turn the bag right side out through the opening in the lining. Stitch the opening closed.

7. To make the drawstring, fold in each short edge  $\frac{1}{4}$ " to the wrong side and press. Fold one 2" x WOF Fabric B strip in half lengthwise and press (Fig. 4). Open the folded fabric and fold each long edge to the creased centerline and press (Fig. 5).

8. Fold the pressed fabric in half again and press to make one  $\frac{1}{2}$ " x WOF strip (Fig. 6). Top stitch down both long sides  $\frac{1}{8}$ " in from the edge to make (1) drawstring (Fig. 7).

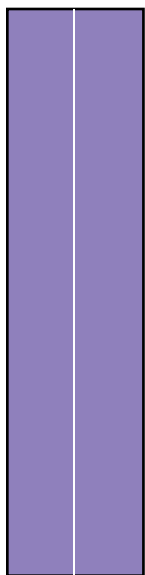


Fig. 4

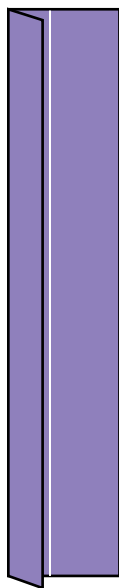


Fig. 5



Fig. 6



Fig. 7

9. Thread the drawstring through one opening on the bag and then back around the other side coming out the second opening. With the same end go back through the first opening and exit out the second opening to make a cinch drawstring.

10. Trim the drawstring ends to the desired length and trim. Tie a knot at the end of each drawstring to complete.

11. Repeat Steps 1-10 and refer to Figure 8 for fabric identification and placement to make Wine Bag #2. Use the (2)  $6\frac{1}{2}$ " x  $11\frac{1}{2}$ " Fabric E strips for the lining.

12. Sew (1)  $3\frac{1}{2}$ " x  $6\frac{1}{2}$ " Fabric G strip to the bottom of (1)  $8\frac{1}{2}$ " x  $6\frac{1}{2}$ " Fabric H strip to make the Outer Bag #3 front (Fig. 9). Repeat to make the Outer Bag #3 back.

13. Repeat Steps 2-10 with Outer Bag #3 front and back pieces to make Wine Bag #3. Use the (2)  $6\frac{1}{2}$ " x  $11\frac{1}{2}$ " Fabric H strips for the lining.

Outer Bag #2  
make 2

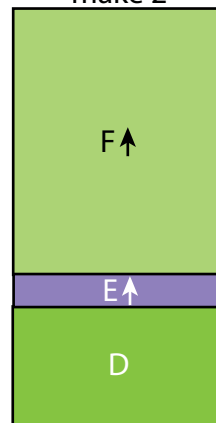


Fig. 8

Outer Bag #3  
make 2

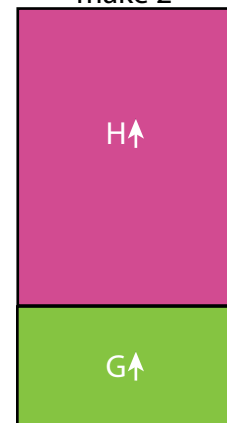


Fig. 9