



Once in a Blue Mood

Quilt 1

by Denise Russell



Quilt size: 45" x 65"

Skill Level: Beginner

Blank Quilting Corporation
49 West 37th Street ♦ New York, NY 10018
Tel: 800-294-9495 ♦ Fax: 212-679-4578
www.blankquilting.net

facebook

Free Project
NOT FOR RESALE

Once in a Blue Mood - Fabrics in the Collection



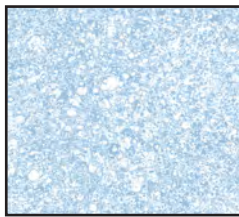
9732P - Panel - Med. Blue



9733-70 Large Floral - Lt. Blue



9734-77 Dot Texture
Dk. Blue



9735-70 Speckled
Marble - Lt. Blue



9736-75 Buds
Med. Blue



9736-77 Buds
Dk. Blue



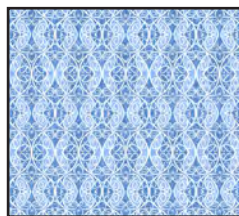
9737-70 Mums
Lt. Blue



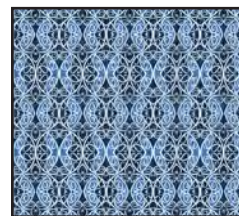
9737-77 Mums
Dk. Blue



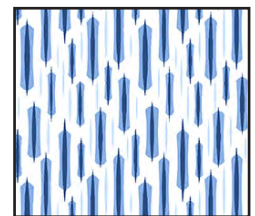
9738-77 Lacy Floral
Dk. Blue



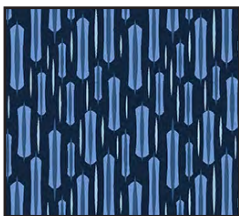
9739-75 Butterfly
Scroll - Med. Blue



9739-77 Butterfly
Scroll - Dk. Blue



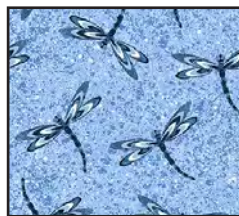
9740-70 Long Stitch
Lt. Blue



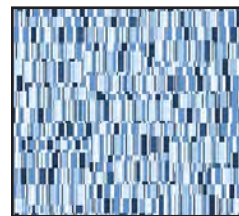
9740-77 Long Stitch
Dk. Blue



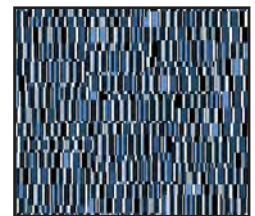
9741-70 Dragonfly
Lt. Blue



9741-75 Dragonfly
Med. Blue



9742-75 Mini
Rectangle Geo
Med. Blue



9742-77 Mini
Rectangle Geo
Dk. Blue

Materials

Yardages and cutting instructions are based on 42" of usable fabric width.

1 9732P-75 Panel-Med. Blue
 1/4 yard 9737-70 Mums-Lt. Blue
 1/4 yard 9739-75 Butterfly Scroll-Med. Blue
 1/3 yard 9735-70 Speckled Marble-Lt. Blue
 1/3 yard 9740-75 Long Stitch-Lt. Blue
 1/2 yard 3955 Eclipse-White
 1/2 yard 9734-77 Dot Texture-Dk. Blue
 3/4 yard 9736-77 Buds-Dk. Blue
 3/4 yard 9733-70 Large Floral-Lt. Blue
 4-1/8 yards 9741-75 Dragonfly-Med. Blue for backing
 53" x 73" piece of batting

Cut Fabrics

Note: All strips are cut across the width of the fabric (WOF) from selvage to selvage unless otherwise noted. If cut across the length of the fabric (LOF), the LOF notation will be indicated.

From 9732P-75 Panel-Med. Blue:

*Trim panel to 23-1/2" x 43-1/2".

From 9737-70 Mums-Lt. Blue:

*Cut one 4-1/8" x WOF strip. Sub-cut eight 4-1/8" squares; cut once diagonally. (A)

From 9739-75 Butterfly Scroll-Med. Blue:

*Cut one 4-1/8" x WOF strip. Sub-cut eight 4-1/8" squares; cut once diagonally. (B)

From 9735-70 Speckled Marble-Lt. Blue:

*Cut one 1-3/8" x WOF strip. Sub-cut four 1-3/8" x 3-7/8" rectangles.
 *Cut one 1-5/8" x WOF strip. Sub-cut sixteen 1-5/8" squares.
 *Cut one 4-5/8" x WOF strip. Sub-cut:
 - Sixteen 1-3/8" x 4-5/8" rectangles; and
 - Twelve 1-3/8" x 3-7/8" rectangles (for a total of 16 rectangles).

From 9740-75 Long Stitch-Lt. Blue:

*Cut one 1-3/8" x WOF strip. Sub-cut four 1-3/8" x 3-7/8" rectangles.

*Cut one 1-5/8" x WOF strip. Sub-cut sixteen 1-5/8" squares.

*Cut one 4-5/8" x WOF strip. Sub-cut:
 - Sixteen 1-3/8" x 4-5/8" rectangles; and
 - Twelve 1-3/8" x 3-7/8" rectangles (total: 16 rectangles).

From 3955 Eclipse-White:

*Cut nine 1-1/2" x WOF strips – four for border 1 and five for border 3.

From 9734-77 Dot Texture-Dk. Blue

*Cut six 2-1/2" x WOF strips for binding.

From 9736-77 Buds-Dk. Blue:

*Cut one 1-3/8" x WOF strip. Sub-cut eight 1-3/8" x 3-7/8" rectangles.

*Cut two 1-5/8" x WOF strips. Sub-cut thirty-two 1-5/8" squares.

*Cut two 4-5/8" x WOF strips. Sub-cut:
 - Thirty-two 1-3/8" x 4-5/8" rectangles; and
 - Twenty-four 1-3/8" x 3-7/8" rectangles (for a total of 32 rectangles).

*Cut two 4-1/8" x WOF strips. Sub-cut sixteen 4-1/8" squares; cut once diagonally. (C)

From 9733-70 Large Floral-Lt. Blue:

*Cut five 4-1/2" x WOF strips for border 4.

Assemble Blocks

Note: Measurements include 1/4" seam allowances. Sew with right sides together unless otherwise stated. If no direction is specified, press seams toward darker fabric.

1. Draw a diagonal line on the wrong side of the 1-5/8" Buds-Dk. Blue squares. With right sides together, layer the marked Buds-Dk. Blue squares atop the 1-5/8" Mums-Lt. Blue squares. Stitch 1/4" on each side of the marked line, cut on the drawn line, press each unit open with seam toward dark fabric, and trim dog ears (*figure 1*). Make a total of thirty-two small half-square triangles.



Figure 1 - Make 32.

2. Repeat step 1 with the remaining 1-5/8" Buds-Dk. Blue squares and the 1-5/8" Long Stitch-Lt. Blue squares to make thirty-two small half-square triangles (*figure 2*).



Figure 2 - Make 32.

3. Sew a Mums-Lt. Blue triangle A to a Buds-Dk. Blue triangle C (*figure 3*). Press seams toward dark fabric. Repeat with remaining triangles A and fifteen more Buds-Dk. Blue triangle C to make a total of sixteen large half-square triangles.



Figure 3 - Make 16.

4. Repeat step 3 with the remaining Buds-Dk. Blue triangles C and the Butterfly Scroll-Med. Blue triangles B (*figure 4*). Make a total of sixteen large half-square triangles.



Figure 4 - Make 16.

5. Sew one 1-3/8" x 3-7/8" Buds-Dk. Blue rectangle to the left side (light-colored) of the step 3 half-square triangles, and one 1-3/8" x 3-7/8" Mums-Lt. Blue rectangle to the right side (dark-colored) of the same units (*figure 5*). Press seams away from center.



Figure 5

6. Repeat step 5 with the remaining 1-3/8" x 3-7/8" Buds-Dk. Blue rectangles, the 1-3/8" x 3-7/8" Long

Stitch-Lt. Blue rectangles, and the step 4 large half-square triangles (*figure 6*).



Figure 6

7. Noticing fabric orientation, sew a step 1 small half-square triangle to the **left short end** of a 1-3/8" x 4-5/8" **Mums-Lt. Blue** rectangle. Sew another step 1 small half-square triangle to the **right short end** of a 1-3/8" x 4-5/8" **Buds-Dk. Blue** rectangle (*figure 7*). Press seams toward rectangles. Repeat with remaining Mums-Lt. Blue rectangles to make sixteen strips W, and with fifteen more Buds-Dk. Blue rectangles to make sixteen strips X.



Strips W - Make 16.



Strips X - Make 16.

Figure 7

8. Repeat step 7 with the step 2 small half-square triangles, the remaining Buds-Dk. Blue rectangles, and the 1-3/8" x 4-5/8" Long Stitch-Lt. Blue rectangles (*figure 8*) to make sixteen strips Y and sixteen strips Z.



Strips Y - Make 16.



Strips Z - Make 16.

Figure 8

9. Noticing fabric orientation, sew one step 7 strip W to the top and one strip X to the bottom of the step 3 large half-square triangles (*figure 9*). Press seams away from center. Make sixteen 5-1/2" blocks.



Figure 9 - Make 16.

10. Repeat step 9 with the step 8 Y and Z strips, and the step 4 large half-square triangles (*figure 10*) to make sixteen 5-1/2" blocks.



Figure 10 – Make 16.

Assemble Quilt Top

11. For border 1, sew four 1-1/2" Eclipse White strips together end to end using diagonal seams. Measure the vertical length of the quilt top through the center and cut two border strips that length. Sew strips to the sides of the quilt top. Measure the width of the quilt top through its center. Cut two border strips that length and sew one to the top and one to the bottom. Press seams toward borders.

12. For border 2 and following the quilt photograph for block color placement and fabric orientation, sew together two strips of 9 blocks each. Sew one strip to

the right and one to the left side of the quilt center. Press seams to center. For the top and bottom, sew two strips of seven blocks each and add one strip to the top and one to the bottom of the quilt center.

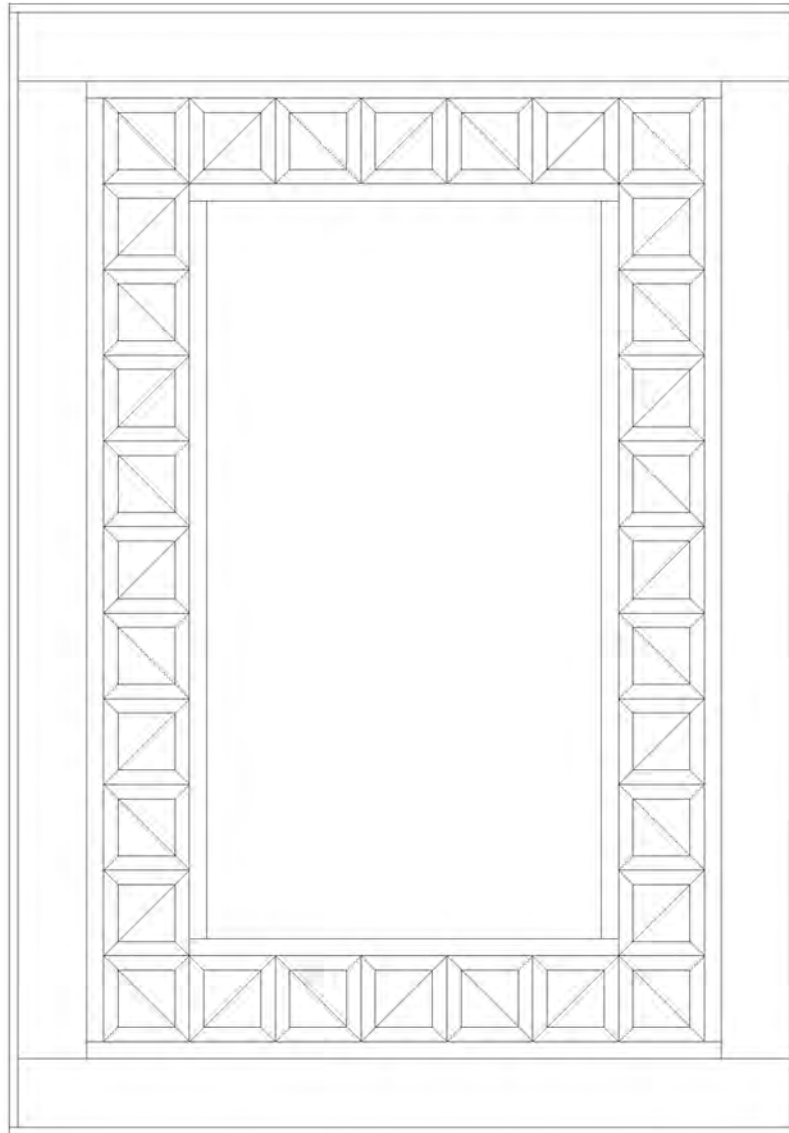
13. Repeat step 11 with the five 1-1/2" Eclipse White strips to make and add border 3.

14. Repeat step 11 with the five 4-1/2" Large Floral-Lt. Blue strips to make and add border 4.

Finishing

15. Create a quilt sandwich with the batting between the quilt top and the backing. Pin or baste layers together, mark quilting design, and quilt by hand or machine. When quilting is complete, remove pins or basting, and trim batting and backing even with raw edges of the quilt top.

16. Join the six 2-1/2" Dot Texture-Dk. Blue binding strips together end to end using a diagonal seam to make one long strip. Press in half lengthwise. Sew binding to the edges of the quilt top, mitering corners, and overlapping ends. Fold binding to the back of the quilt and stitch it in place by hand to finish.



Quilt Diagram

©2019 Blank Quilting Corporation

Every effort has been made to ensure that all projects are error free. All the information is presented in good faith; however, no warranty can be given nor results guaranteed as we have no control over the execution of instructions. Therefore, we assume no responsibility for the use of this information or damages that may occur as a result. When errors are brought to our attention, we make every effort to correct and post a revision as soon as possible. Please make sure to check www.blankquilting.net for pattern updates prior to starting the project. We also recommend that you test the project prior to cutting for kits. Finally, all free projects are intended to remain free to you and are not for resale.