

Joy of Color

by Color Pop Studio



Quilt design by Denise Russell.

Quilt size: 56" x 65"

Skill Level: Beginner

Blank Quilting Corporation

49 West 37th Street ♦ New York, NY 10018

Tel: 800-294-9495 ♦ Fax: 212-679-4578

www.blankquilting.net

facebook

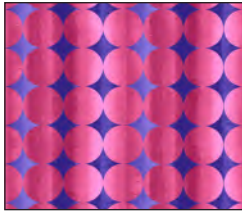
Free Project

NOT FOR RESALE

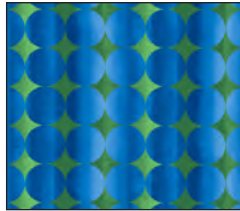
Joy of Color - Fabrics in the Collection



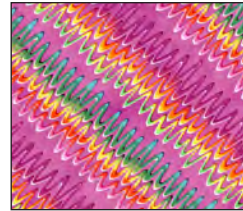
2860-77 Large
Medallion - Blue



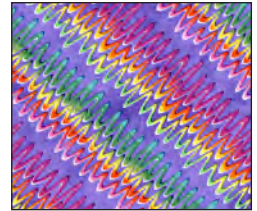
2861-22 Ombre
Dots - Raspberry



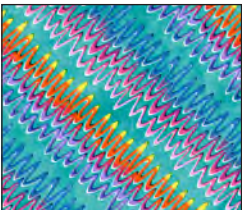
2861-77 Ombre
Dots - Blue



2862-22 Squiggle
Lines - Raspberry



2862-55 Squiggle
Lines - Purple



2862-67 Squiggle
Lines - Teal



2863-22 Square
Geometric - Raspberry



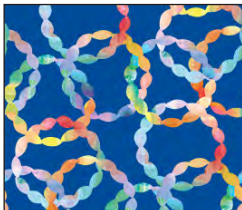
2864-22 Tonal
Medallions - Raspberry



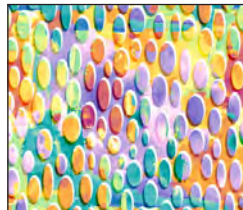
2864-33 Tonal
Medallions - Orange



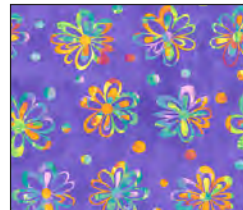
2864-67 Tonal
Medallions - Teal



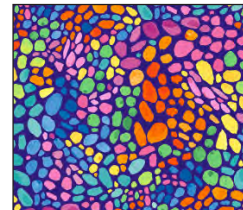
2865-77 Linked
Circles - Blue



2866-50 Rainbow
Ovals - Lilac

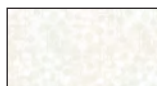


2867-55 Rainbow
Flowers - Purple



2868-77 Abstract
Dots - Blue

Selected fabrics from the
Jot Dot Collection



9570-09
Marshmallow



9570-44
Yellow

Materials

Yardages and cutting instructions are based on 42" of usable fabric width.

1/4 yard 9570-44 Jot Dot - Yellow
 3/8 yard 2860-77 Large Medallion - Blue
 3/8 yard 2864-22 Tonal Medallions - Raspberry
 1/2 yard 2867-55 Rainbow Flowers - Purple
 1/2 yard 2868-77 Abstract Dots - Blue
 3/4 yard 2865-77 Linked Circles - Blue
 3/4 yard 2864-33 Tonal Medallions - Orange
 7/8 yard 9570-09 Jot Dot - Marshmallow
 1 yard 2864-67 Tonal Medallions - Teal
 3-1/2 yards 2865-77 Linked Circles - Blue for backing
 64" x 73" piece of Air Lite® Colour Me 100%
 Cotton batting

Cut Fabrics

Note: All strips are cut across the width of the fabric (WOF) from selvage to selvage unless otherwise indicated.

From 9570-44 Jot Dot – Yellow, cut:

*Two 2" x WOF strips. Sub-cut thirty 2" squares.

From 2860-77 Large Medallion – Blue, cut:

*Five 2" x WOF strips. Sub-cut fourteen 2" x 6-1/2" strips and fourteen 2" x 8" strips.

From 2864-22 Tonal Medallions – Raspberry, cut:

*Two 2" x WOF strips. Sub-cut twelve 2" x 6-1/2" strips.

*One 8" x WOF strip. Sub-cut sixteen 2" x 8" strips and four 2" x 6-1/2" strips (for a total of 16).

From 2867-55 Rainbow Flowers – Purple, cut:

*Four 2" x WOF strips. Sub-cut:

- Fourteen 2" squares
- Sixteen 2" x 3-1/2" strips
- Sixteen 2" x 5" strips.

*One 6-1/2" x WOF strip. Sub-cut sixteen 2" x 6-1/2" strips.

From 2868-77 Abstract Dots – Blue, cut:

*One 8" x WOF strip. Sub-cut sixteen 2" x 8" strips.

*One 9-1/2" x WOF strip. Sub-cut sixteen 2" x 9-1/2" strips.

From 2865-77 Linked Circles – Blue, cut:

*Twelve 2" x WOF strips for borders 2 and 4.

From 2864-33 Tonal Medallions – Orange, cut:

*Seven 2" x WOF strips. Sub-cut:

- Sixteen 2" squares
- Sixteen 2" x 3-1/2" strips
- Fourteen 2" x 6-1/2" strips
- Fourteen 2" x 5" strips.

*Six 1-1/2" x WOF strips for border 3.

From 9570-09 Jot Dot – Marshmallow, cut:

*One 3-1/2" x WOF strip. Sub-cut twenty-one 2" x 3-1/2" strips.

*Two 5" x WOF strips. Sub-cut thirty 2" x 5" strips and nine 2" x 3-1/2" strips (for a total of 30).

*Six 2" x WOF strips for border 1.

From 2864-67 Tonal Medallions – Teal, cut:

*Four 2" x WOF strips. Sub-cut fourteen 2" x 9-1/2" strips.

*One 8" x WOF strip. Sub-cut fourteen 2" x 8" strips.

*Seven 2-1/2" x WOF strips for binding.

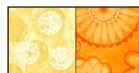
From 2865-77 Linked Circles - Blue, cut:

*Two 64" x WOF panels, pieced horizontally.

Assemble Blocks

Notes: Measurements include 1/4" seam allowances. Sew with right sides together unless otherwise stated. If no direction is specified, press the seam toward the darker fabric.

1. Sew one 2" 2864-33 Tonal Medallions – Orange square to one 2" 9570-44 Jot Dot – Yellow square. Make sixteen units. Press the seams toward the darker fabric. Repeat with fourteen 2" 2867-55 Rainbow Flowers – Purple squares and fourteen 2" Yellow squares (*figure 1*). These 2" x 3-1/2" units are labeled in the block diagram on the next page as "1a/Ctr".



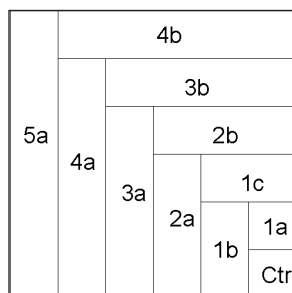
For blocks X – Make 16. For blocks Y – Make 14.

Figure 1 – Make (30) assorted 2" x 3-1/2" units.

Joy of Color - Quilt 2

Page 2

2. Refer to the block diagram above and Table 1 for each round's sewing sequence and strip size.



Round Location	Fabric Block X/Block Y	Strip Size
1b	2864-33 Tonal Medallions – Orange/2867-55 Rainbow Flowers – Purple	2" x 3-1/2"
1c	9570-09 Jot Dot – Marshmallow/9570-09 Jot Dot – Marshmallow	2" x 3-1/2"
2a	9570-09 Jot Dot – Marshmallow/9570-09 Jot Dot – Marshmallow	2" x 5"
2b	2867-55 Rainbow Flowers – Purple/2864-33 Tonal Medallions – Orange	2" x 5"
3a	2867-55 Rainbow Flowers – Purple /2864-33 Tonal Medallions – Orange	2" x 6-1/2"
3b	2864-22 Tonal Medallions – Raspberry /2860-77 Large Medallion – Blue	2" x 6-1/2"
4a	2864-22 Tonal Medallions – Raspberry /2860-77 Large Medallion – Blue	2" x 8"
4b	2868-77 Abstract Dots – Blue/2864-67 Tonal Medallions – Teal	2" x 8"
5a	2868-77 Abstract Dots – Blue/2864-67 Tonal Medallions – Teal	2" x 9-1/2"

Table 1. Sewing sequence, fabric used, and strip size for blocks X and Y.

3. As each strip is added, notice the following:
- The blocks can be chain-pieced, i.e., do the same step for all the blocks X and Y.
 - After stitching each round, press the strips open with the seams toward the last addition.
4. Make sixteen blocks X and fourteen blocks Y. The blocks finish at 9-1/2" (*figure 2*).



X - Make 16



Y - Make 14

Figure 2 – Make (30) assorted 9-1/2" blocks.

Assemble Quilt Top

5. Referring to the quilt photo for block placement and orientation, lay out five blocks in six rows, and join the blocks together in each row. Press the seams in one direction.
6. Matching adjacent seams, sew block rows together. Press the seams in one direction.
7. For border 1, join the six 2" 9570-09 Jot Dot – Marshmallow strips together end to end using diagonal seams. Measure the vertical length of the quilt top through the center and cut two border strips that length. Sew one strip to each side of the quilt top and press the seams toward the border strips. Measure the width of the quilt top through the center. Cut two border strips that length and sew one to the top and one to the bottom. Press the seams toward the borders.
8. Repeat Step 7 with the six 2" 2865-77 Linked Circles – Blue strips to make and add border 2.

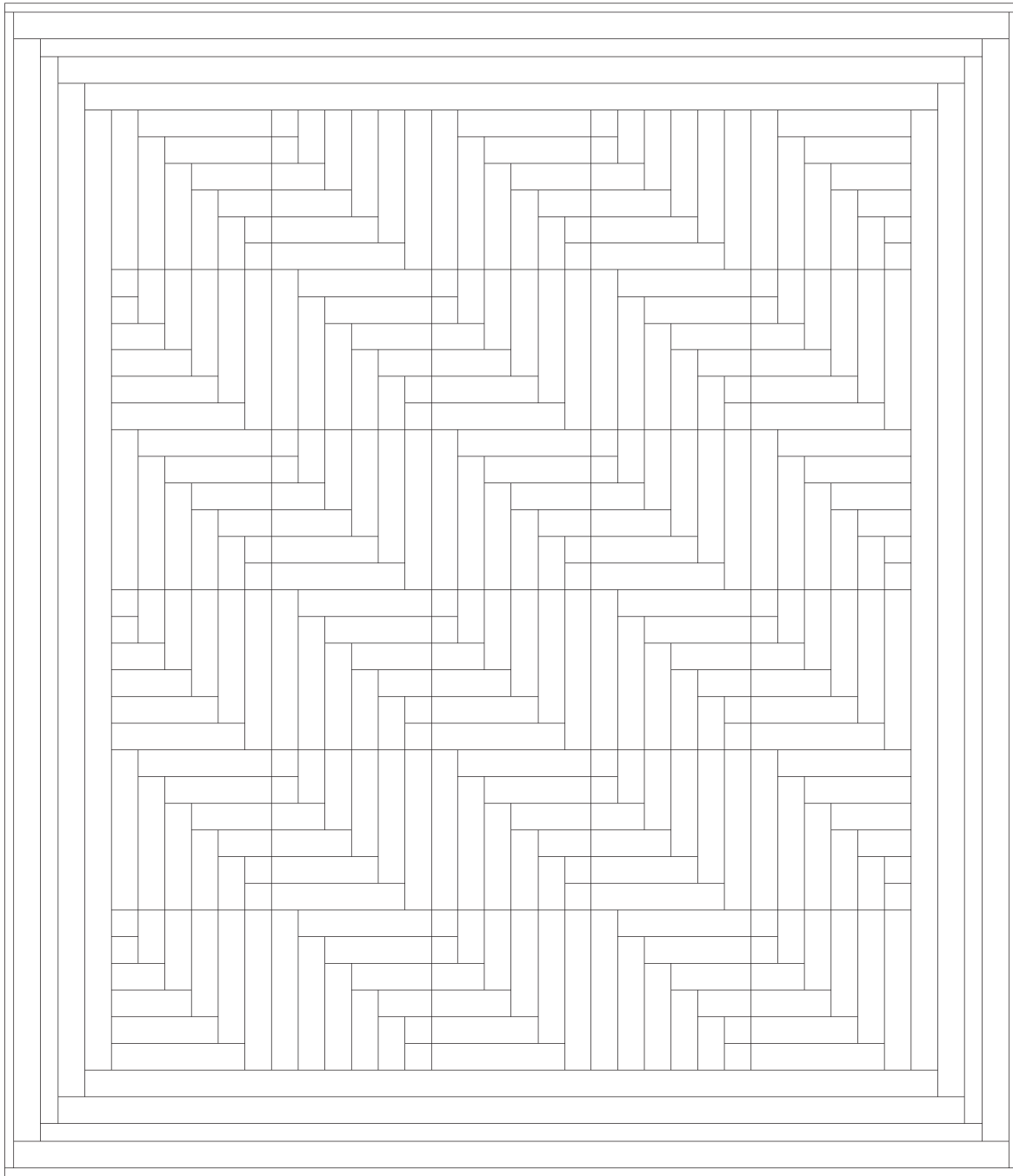
9. Repeat Step 7 with six 1-1/2" 2864-33 Tonal Medallions – Orange strips to make and add border 3.
10. Repeat Step 7 with the six 2" 2865-77 Linked Circles – Blue strips to make and add border 4.

Finishing

11. Create a quilt sandwich with the batting between the quilt top and the backing. Pin or baste layers together, mark the quilting design, and quilt by hand or machine. When quilting is complete, remove pins or basting, and trim batting and backing even with raw edges of the quilt top.
12. Join the seven 2-1/2" 2864-67 Tonal Medallions – Teal binding strips together end to end using a diagonal seam to make one long strip. With wrong sides together, fold in half lengthwise and press. Sew binding to the edges of the quilt, mitering corners, and overlapping ends. Fold binding to the back of the quilt and stitch it in place by hand to finish.

Joy of Color - Quilt 2

Page 4



Quilt Diagram