



Quilt 1

# Joy of Color

by Color Pop Studio



Quilt design by Denise Russell.

Quilt size: 68" x 80"

Skill Level: Advanced Beginner

**Blank Quilting Corporation**

49 West 37th Street ♦ New York, NY 10018

Tel: 800-294-9495 ♦ Fax: 212-679-4578

[www.blankquilting.net](http://www.blankquilting.net)

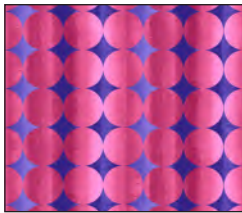
facebook

Free Project  
NOT FOR RESALE

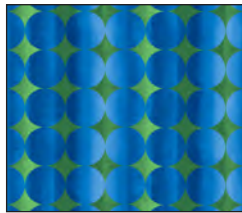
# Joy of Color - Fabrics in the Collection



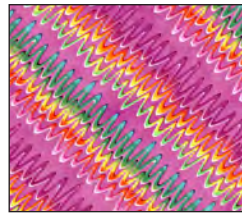
2860-77 Large Medallion - Blue



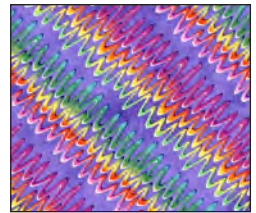
2861-22 Ombre Dots - Raspberry



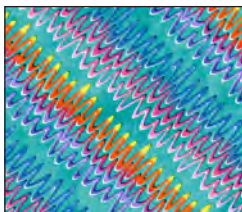
2861-77 Ombre Dots - Blue



2862-22 Squiggle Lines - Raspberry



2862-55 Squiggle Lines - Purple



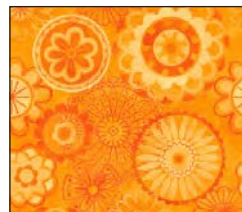
2862-67 Squiggle Lines - Teal



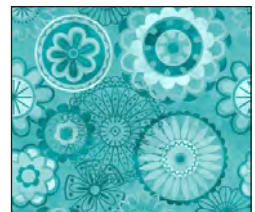
2863-22 Square Geometric - Raspberry



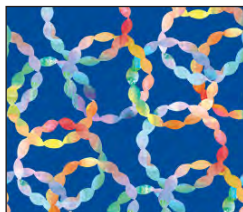
2864-22 Tonal Medallions - Raspberry



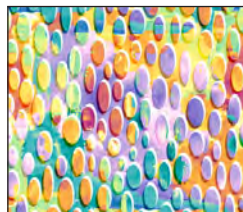
2864-33 Tonal Medallions - Orange



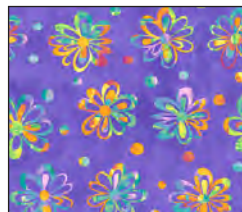
2864-67 Tonal Medallions - Teal



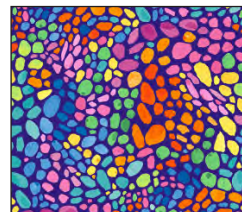
2865-77 Linked Circles - Blue



2866-50 Rainbow Ovals - Lilac



2867-55 Rainbow Flowers - Purple



2868-77 Abstract Dots - Blue

Selected fabrics from the Jot Dot Collection



9570-09 Marshmallow



9570-55 Purple

# Joy of Color - Quilt 1

Page 1

## Materials

*Yardages and cutting instructions are based on 42" of usable fabric width.*

1/4 yard 2861-22 Ombre Dots - Raspberry  
1/4 yard 2862-55 Squiggle Lines - Purple  
1/4 yard 2864-33 Tonal Medallions - Orange  
1/4 yard 2865-77 Linked Circles - Blue  
3/8 yard 2866-50 Rainbow Ovals - Lilac  
5/8 yard 2867-55 Rainbow Flowers - Purple  
5/8 yard 9570-55 Jot Dot - Purple  
2/3 yard 2864-67 Tonal Medallions - Teal  
7/8 yard 2864-22 Tonal Medallions - Raspberry  
1 yard 2863-22 Square Geometric - Raspberry  
1-1/8 yards 2860-77 Large Medallion - Blue  
2-3/4 yards 9570-09 Jot Dot - Marshmallow  
5 yards 2864-22 Tonal Medallions - Raspberry for backing  
76" x 88" piece of Air Lite® Colour Me 100% Cotton batting

## Cut Fabrics

*Note: All strips are cut across the width of the fabric (WOF) from selvage to selvage unless otherwise indicated.*

### From 2861-22 Ombre Dots – Raspberry, cut:

\*One 6-1/2" x WOF strip. Sub-cut eight 3-1/2" x 6-1/2" rectangles.

### From each, cut:

#### 2862-55 Squiggle Lines – Purple

#### 2864-33 Tonal Medallions – Orange

\*One 6-1/2" x WOF strip. Sub-cut nine 3-1/2" x 6-1/2" rectangles.

### From 2865-77 Linked Circles – Blue, cut:

\*One 6-1/2" x WOF strip. Sub-cut eleven 3-1/2" x 6-1/2" rectangles.

### From 2866-50 Rainbow Ovals – Lilac, cut:

\*One 3-1/2" x WOF strip. Sub-cut four 3-1/2" squares.

\*One 6-1/2" x WOF strip. Sub-cut eleven 3-1/2" x 6-1/2" rectangles.

### From 2867-55 Rainbow Flowers – Purple, cut:

\*One 6-1/2" x WOF strip. Sub-cut nine

3-1/2" x 6-1/2" rectangles.

\*Five 2-1/4" x WOF strips for border 2.

### From 9570-55 Jot Dot – Purple, cut:

\*Eight 2-1/2" x WOF strips for binding.

### From 2864-67 Tonal Medallions – Teal, cut:

\*One 6-1/2" x WOF strip. Sub-cut nine 3-1/2" x 6-1/2" rectangles.

\*Two 7-1/4" x WOF strips. Sub-cut nine 7-1/4" squares; cut twice diagonally. (A)

### From 2864-22 Tonal Medallions – Raspberry, cut:

\*Two 2" x WOF strips. Sub-cut thirty-two 2" squares.

\*One 6-1/2" x WOF strip. Sub-cut eleven 3-1/2" x 6-1/2" rectangles.

\*Two 7-1/4" x WOF strips. Sub-cut nine 7-1/4" squares; cut twice diagonally. (B)

### From 2863-22 Square Geometric – Raspberry, cut:

\*One 6-1/2" x WOF strip. Sub-cut eight 3-1/2" x 6-1/2" rectangles.

\*Two 7-1/4" x WOF strips. Sub-cut nine 7-1/4" squares; cut twice diagonally. (C)

\*Six 1-3/4" x WOF strips for border 4.

### From 2860-77 Large Medallion – Blue, cut:

\*One 6-1/2" x WOF strip. Sub-cut eleven 3-1/2" x 6-1/2" rectangles.

\*Eight 3-1/2" x WOF strips for border 8.

### From 9570-09 Jot Dot – Marshmallow, cut:

\*Twenty-1 2" x WOF strips. Sub-cut (400) 2" squares and sixteen 2" x 3-1/2" rectangles.

\*Two 7-1/4" x WOF strips. Sub-cut nine 7-1/4" squares; cut twice diagonally. (D)

\*Twenty-three 1-1/2" x WOF strips for borders 1, 3, 5, and 7.

### From 2864-22 Tonal Medallions - Raspberry, cut:

\*Two 88" x WOF panels, pieced vertically.

## Assemble Blocks

*Notes: Measurements include 1/4" seam allowances. Sew with right sides together unless otherwise stated. If no direction is specified, press the seam toward the darker fabric.*

1. Draw a diagonal line from corner to corner on the wrong side of 384 2" 9570-09 Jot Dot – Marshmallow squares. With right sides together, place one marked Marshmallow square on a corner of one 3-1/2" x 6-1/2" 2860-77 Large Medallion – Blue rectangle and stitch on the drawn line. Repeat with the opposite corner of the same rectangle. Trim seam allowances to 1/4" and press open. Do the same with the other corners and repeat to make eleven units. Working with forty-four more 2" Marshmallow squares and the eleven 3-1/2" x 6-1/2" 2864-22 Tonal Medallions – Raspberry rectangles, make eleven units. Sew together one unit of each kind to complete eleven 6-1/2" blocks (*figure 1*). Press the seams in one direction.

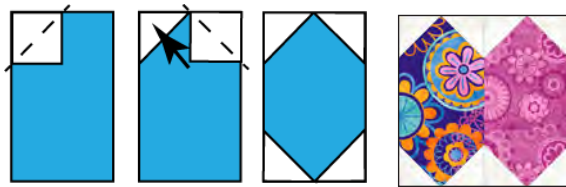
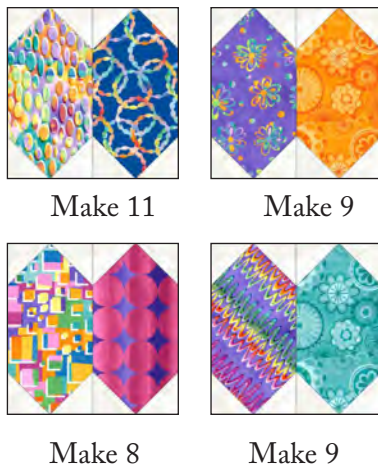


Figure 1 – Make (11) 6-1/2" blocks.

2. Repeat Step 1 with the remaining marked 2" Marshmallow squares and the 3-1/2" x 6-1/2" rectangles of 2866-50 Rainbow Ovals – Lilac, 2865-77 Linked Circles – Blue, 2867-55 Rainbow Flowers – Purple, 2864-33 Tonal Medallions – Orange, 2863-22 Square Geometric – Raspberry, 2861-22 Ombre Dots – Raspberry, 2862-55 Squiggle Lines – Purple, and 2864-67 Tonal Medallions – Teal (*figure 2*).



Make 11

Make 9

Make 8

Make 9

Figure 2 – Make 37 assorted 6-1/2" blocks for a total of 48.

3. Sew a 2863-22 Square Geometric – Raspberry C triangle to a 9570-09 Jot Dot – Marshmallow D triangle. Press the seam toward the darker fabric. Sew a 2864-67 Tonal Medallions – Teal A triangle to a 2864-22 Tonal Medallions – Raspberry triangle B. Press as before. Sew the two units together to make a 6-1/2" block (*figure 3*). Press the seam open. Repeat to make thirty-six blocks.



Figure 3 – Make (36) 6-1/2" blocks.

4. Draw a diagonal line from corner to corner on the wrong side of thirty-two 2" 2864-22 Tonal Medallions – Raspberry squares. Noting the line orientation and with right sides together, layer a marked Raspberry square on the left short end of a 2" x 3-1/2" 9570-09 Jot Dot – Marshmallow rectangle and stitch on the drawn line. Trim 1/4" away from the seam line and press open. Similarly, stitch another Raspberry square to the opposite end of the same rectangle (*figure 4*). Make sixteen 2" x 3-1/2" flying-geese units.



Figure 4 – Make (16) 2" x 3-1/2" units.

5. Sew one Step 4 unit to the right and one to the left of a 3-1/2" 2866-50 Rainbow Ovals – Lilac square. Press the seams toward the center. Repeat to make four center rows. Noting fabric orientation, sew a 2" 9570-09 Jot Dot – Marshmallow square to opposite sides of the remaining Step 4 units to make eight rows. Press the seams away from the center. Sew one row to the top and one to the bottom of the center rows to make four 6-1/2" star units (*figure 5*, next page). Press the seams open.

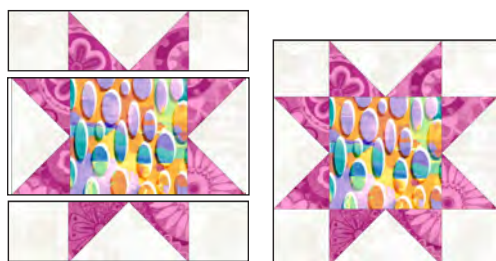


Figure 5 – Make (4) 6-1/2” units.

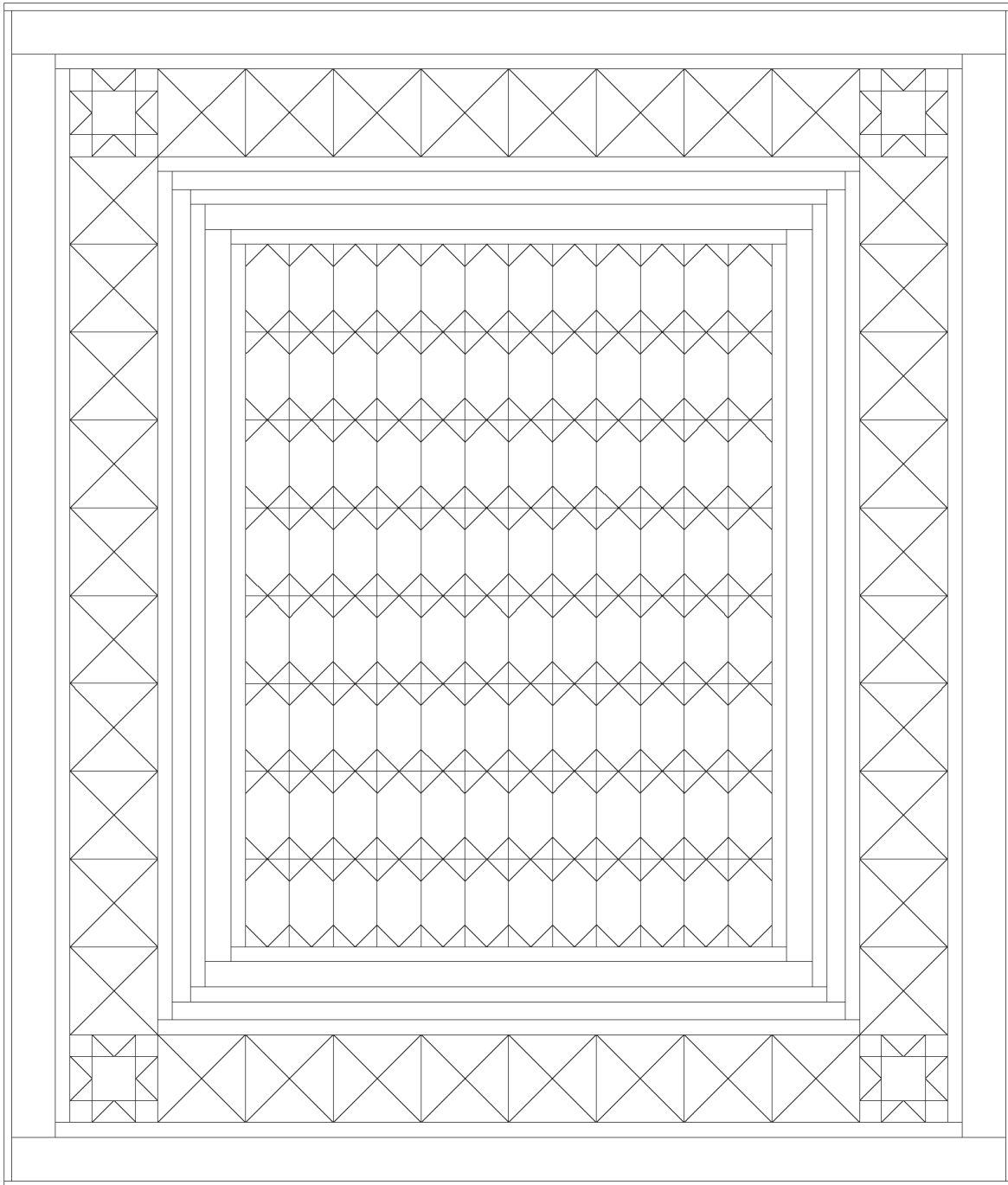
## Assemble Quilt Top

6. Referring to the quilt photo for block placement and orientation, lay out six blocks in eight rows, and join the blocks together in each row. Press the seams in one direction.
7. Matching adjacent seams, sew block rows together. Press the seams in one direction.
8. For border 1, join the five 1-1/2” 9570-09 Jot Dot – Marshmallow strips together end to end using diagonal seams. Measure the vertical length of the quilt top through the center and cut two border strips that length. Sew one strip to each side of the quilt top and press the seams toward the border strips. Measure the width of the quilt top through the center. Cut two border strips that length and sew one to the top and one to the bottom. Press the seams toward the borders.
9. Repeat Step 8 with the five 2-1/4” 2867-55 Rainbow Flowers – Purple strips to make and add border 2.
10. Repeat Step 8 with five 1-1/2” Marshmallow strips to make and add border 3.
11. Repeat Step 8 with the six 1-3/4” 2863-22 Square Geometric – Raspberry strips to make and add border 4.
12. Repeat Step 8 with six 1-1/2” Marshmallow strips to make and add border 5. The quilt measures 48-1/2” x 60-1/2” up to here.

13. For border 6 and referring to the quilt photo for block placement and orientation, arrange ten Step 3 blocks for each side of the quilt. Sew blocks together and sew one border strip to each side of the quilt center. Press the seam toward quilt center.
14. Repeat Step 13 with the four Step 4 star blocks and the remaining blocks (eight for each strip) and sew one border strip to the top and one to the bottom of the quilt center.
15. Repeat Step 8 with seven 1-1/2” Marshmallow strips to make and add border 7.
16. Repeat Step 8 with the eight 3-1/2” 2860-77 Large Medallion – Blue strips to make and add border 8.

## Finishing

17. Create a quilt sandwich with the batting between the quilt top and the backing. Pin or baste layers together, mark the quilting design, and quilt by hand or machine. When quilting is complete, remove pins or basting, and trim batting and backing even with raw edges of the quilt top.
18. Join the eight 2-1/2” 9570-55 Jot Dot – Purple binding strips together end to end using a diagonal seam to make one long strip. With wrong sides together, fold in half lengthwise and press. Sew binding to the edges of the quilt, mitering corners, and overlapping ends. Fold binding to the back of the quilt and stitch it in place by hand to finish.



Quilt Diagram

©2022 Blank Quilting Corporation

*Every effort has been made to ensure that all projects are error free. All the information is presented in good faith; however, no warranty can be given nor results guaranteed as we have no control over the execution of instructions. Therefore, we assume no responsibility for the use of this information or damages that may occur as a result. When errors are brought to our attention, we make every effort to correct and post a revision as soon as possible. Please make sure to check [www.blankquilting.net](http://www.blankquilting.net) for pattern updates prior to starting the project. We also recommend that you test the project prior to cutting for kits. Finally, all free projects are intended to remain free to you and are not for resale.*