

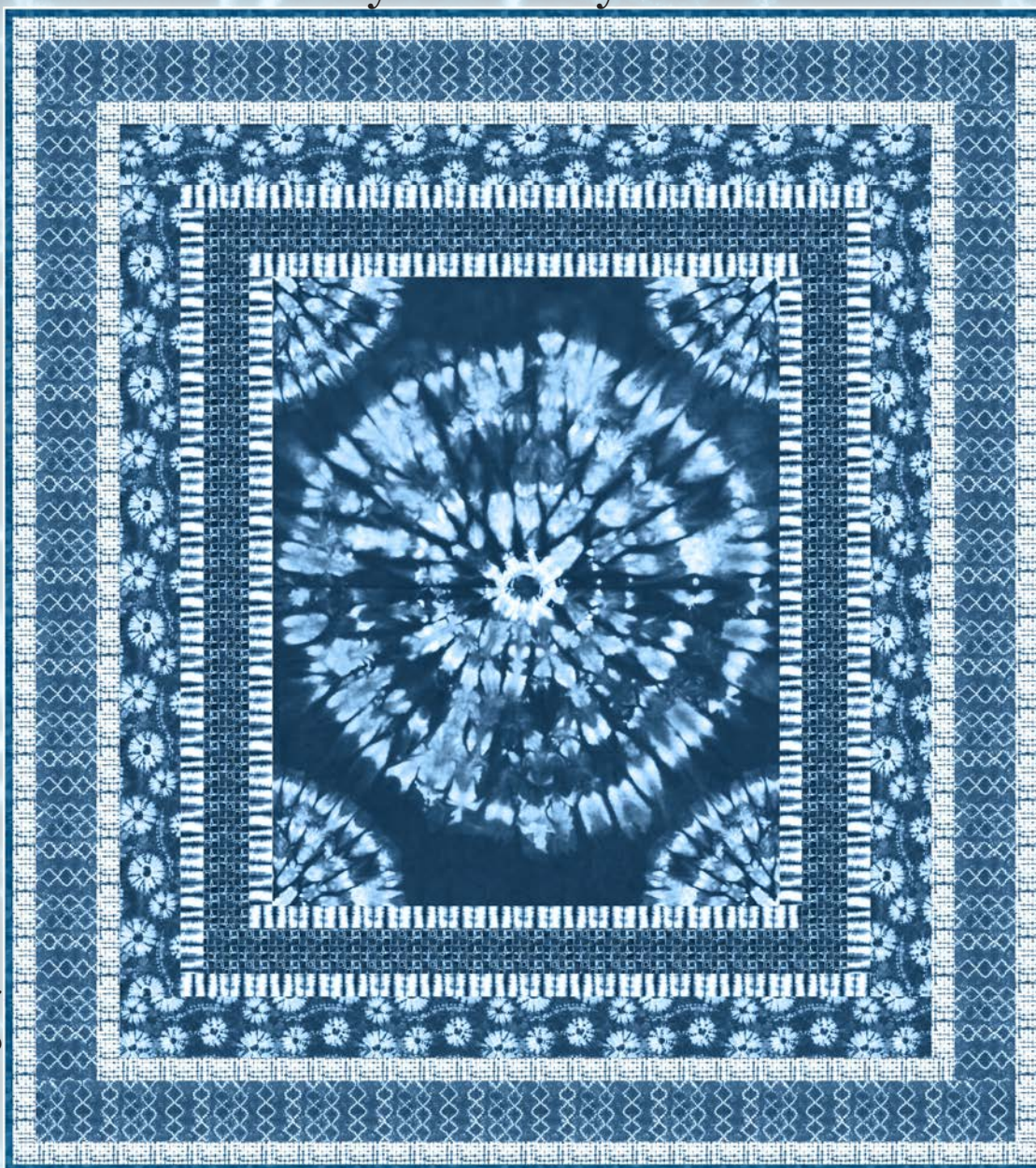


Quilt 1

# Katori

by Two if by Sea

Quilt design by Denise Russell.



Quilt size: 68-1/2" x 76-1/2"

Skill Level: Beginner

## Blank Quilting Corporation

49 West 37th Street ♦ New York, NY 10018

Tel: 800-294-9495 ♦ Fax: 212-679-4578

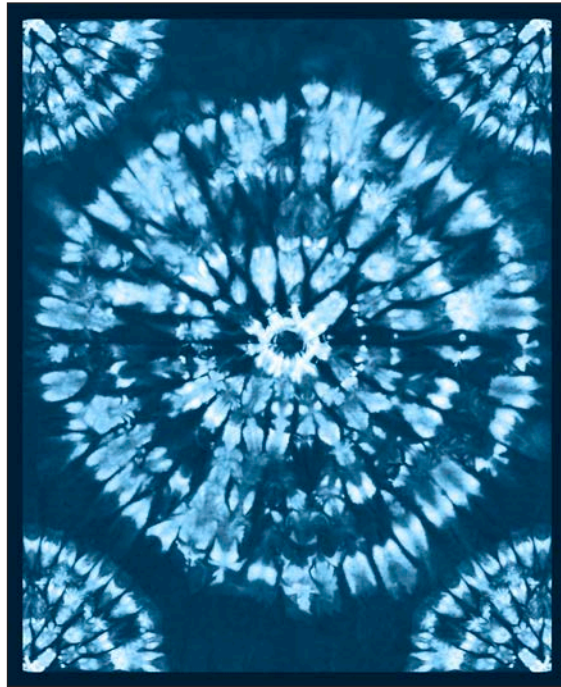
[www.blankquilting.net](http://www.blankquilting.net)

facebook

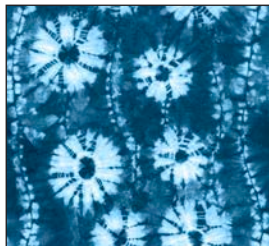
Free Project  
NOT FOR RESALE



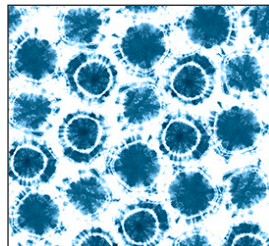
# Katori - Fabrics in the Collection



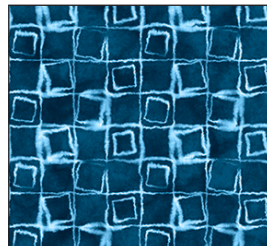
2203P-75 Circle Panel  
Blue



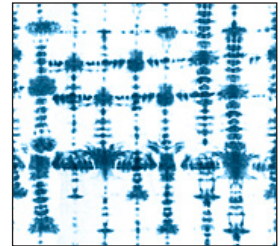
2194-75 Floral Chain  
Blue



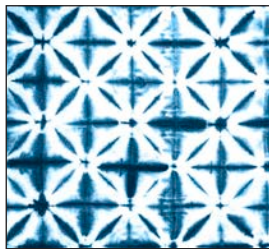
2195-01 Small Dot  
White



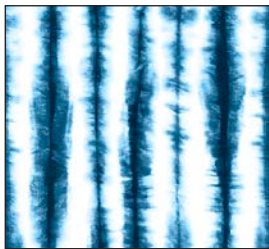
2196-75 Squares  
Geometric - Blue



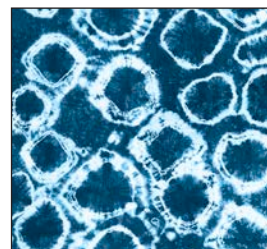
2197-01 Grid Geo  
White



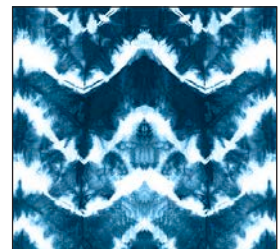
2198-01 Tiles  
White



2199-01 Stripe  
White



2200-75 Circles  
Blue



2201-75 Chevron  
Blue



2202-75 Diamonds  
Blue

Selected fabric from the  
Jot Dot II Collection



9570-75  
Ocean

# Katori - Quilt 1

Page 1

## Materials

*Yardages and cutting instructions are based on 42" of usable fabric width*

One 2203P-75 Circle Panel - Blue  
5/8 yard 2196-75 Squares Geometric - Blue  
5/8 yard 2199-01 Stripe - White  
2/3 yard 9570-75 Jot Dot - Ocean  
7/8 yard 2194-75 Floral Chain - Blue  
7/8 yard 2197-01 Grid Geo - White  
1-1/8 yards 2202-75 Diamonds - Blue  
4 1/2 yards 2200-75 Circles - Blue for backing  
77" x 84" piece of Air Lite® Colour Me 100% Cotton batting

## Cut Fabrics

**Note:** All strips are cut across the width of the fabric (WOF) from selvage to selvage unless otherwise indicated.

### From 2203P-75 Circle Panel – Blue:

\*Trim panel to 33-3/4" x 41-3/4".

*Note: Due to the panel printing process, and since there are no pieced borders around the panel, adjust this measurement if needed.*

### From 2196-75 Squares Geometric – Blue:

\*Cut five 3-1/2" x WOF strips for border 2.

### From 2199-01 Stripe – White:

\*Cut nine 2" x WOF strips for borders 1 and 3.

### From 9570-75 Jot Dot – Ocean:

\*Cut eight 2-1/2" x WOF strips for binding.

### From 2194-75 Floral Chain – Blue:

\*Cut six 4-1/2" x WOF strips for border 4.

### From 2197-01 Grid Geo – White:

\*Cut thirteen 2" x WOF strips for borders 5 and 7.

### From 2202-75 Diamonds – Blue:

\*Cut eight 4-1/2" x LOF strips for border 6.

## Assemble Quilt Top

1. Join the nine 2" 2199-01 Stripe – White strips together end to end using diagonal seams. Measure

the vertical length of the quilt top through the center and cut two border strips that length. Sew one strip to each side of the quilt top and press the seams toward the border strips. Measure the width of the quilt top through the center. Cut two border strips that length and sew one to the top and one to the bottom. Press the seams toward the borders. Save the remaining strip for border 3.

2. Repeat Step 1 with the five 3-1/2" 2196-75 Squares Geometric – Blue strips to make and add border 2.

3. Repeat Step 1 with the remaining 2" 2199-01 Stripe – White long strip to make and add border 3.

4. Repeat Step 1 with the six 4-1/2" 2194-75 Floral Chain – Blue strips to make and add border 4.

5. Repeat Step 1 with the six 2" 2197-01 Grid Geo – White strips to make and add border 5. Save remaining strip for border 7.

6. Repeat Step 1 with the eight 4-1/2" 2202-75 Diamonds – Blue strips to make and add border 6.

7. Repeat Step 1 with the remaining 2" 2197-01 Grid Geo – White long strip to make and add border 7.

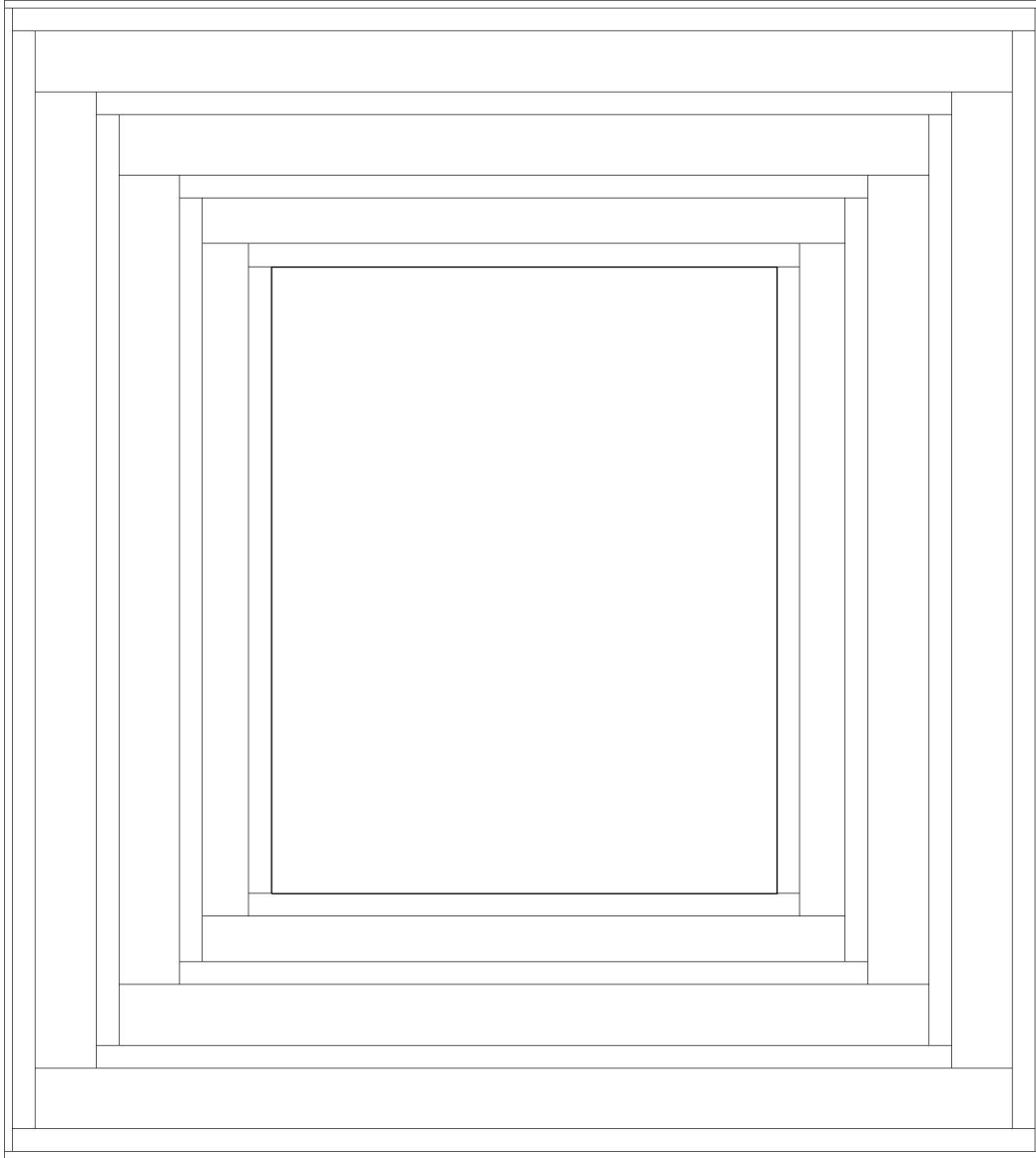
## Finishing

8. Create a quilt sandwich with the batting between the quilt top and the backing. Pin or baste layers together, mark quilting design, and quilt by hand or machine. When quilting is complete, remove pins or basting, and trim batting and backing even with raw edges of the quilt top.

9. Join the eight 2-1/2" 9570-75 Jot Dot – Ocean binding strips together end to end using a diagonal seam to make one long strip. Fold in half lengthwise and press. Sew binding to the edges of the quilt, mitering corners, and overlapping ends. Fold binding to the back of the quilt and stitch it in place by hand to finish.

# Katori - Quilt 1

Page 2



Quilt Diagram

©2021 Blank Quilting Corporation

*Every effort has been made to ensure that all projects are error free. All the information is presented in good faith; however, no warranty can be given nor results guaranteed as we have no control over the execution of instructions. Therefore, we assume no responsibility for the use of this information or damages that may occur as a result. When errors are brought to our attention, we make every effort to correct and post a revision as soon as possible. Please make sure to check [www.blankquilting.net](http://www.blankquilting.net) for pattern updates prior to starting the project. We also recommend that you test the project prior to cutting for kits. Finally, all free projects are intended to remain free to you and are not for resale.*