



Quilt 1

Let's Partea

by Satin Moon Designs



Quilt design by Denise Russell.

Quilt size: 47" x 62"

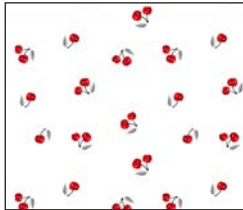
Skill Level: Beginner

Blank Quilting Corporation
49 West 37th Street ♦ New York, NY 10018
Tel: 800-294-9495 ♦ Fax: 212-679-4578
www.blankquilting.net

[facebook](#)

Free Project
NOT FOR RESALE

Let's Partea - Fabrics in the Collection



2377-01 Cherries
White



2378-90 Tossed Tea-
pots & Teacups - Gray



2379-99 Tossed
Teacups - Black



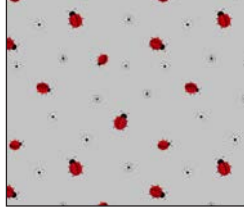
2380-99 Teabags
Black



2381-01 Tossed
Teapots - White



2382-01 Teacup Stripe
White



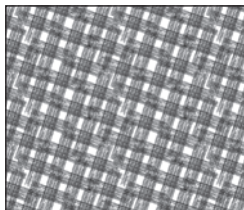
2383-90 Ladybugs
Gray



2384-90 Teaspoons
Gray



2385-88 Abstract
Argyle - Red

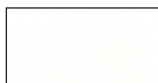


2385-99 Abstract
Argyle - Black



2376-01 Teapots and Teacups
White

Selected fabrics from the
Eclipse Collection



3955
White



3955
Red



3955
Jet Black

Materials

Yardages and cutting instructions are based on 42" of usable fabric width.

1/4 yard 2379-99 Tossed Teacups - Black
1/4 yard 2380-99 Teabags - Black
1/4 yard 2381-01 Tossed Teapots - White
1/4 yard 2382-01 Teacup Stripe - White
1/4 yard 2384-90 Teaspoons - Gray
1/4 yard 2385-88 Abstract Argyle - Red
3/8 yard 3955 Eclipse - Red
5/8 yard 3955 Eclipse - Jet Black
5/8 yard 2383-90 Ladybugs - Gray
3/4 yard 2378-90 Tossed Teapots & Teacups - Gray
2 yards 3955 Eclipse - White
3-1/8 yards 2376-01 Teapots & Teacups for backing
55" x 70" piece of Air Lite® Colour Me 100%
Cotton batting

Cut Fabrics

Note: All strips are cut across the width of the fabric (WOF) from selvage to selvage unless otherwise indicated.

From 2379-99 Tossed Teacups – Black:

*Cut one 5" x WOF strip. Sub-cut seven 5" squares.

From each:

2384-90 Teaspoons - Gray

2382-01 Teacup Stripe - White

*Cut one 5" x WOF strip. Sub-cut six 5" squares.

From 2380-99 Teabags – Black:

*Cut one 5" x WOF strip. Sub-cut five 5" squares.

From each:

2385-88 Abstract Argyle – Red

2381-01 Tossed Teapots – White

*Cut one 5" x WOF strip. Sub-cut four 5" squares.

From 3955 Eclipse – Red:

*Cut six 1-1/2" x WOF strips for border 3.

From 3955 Eclipse - Jet Black:

*Cut six 2-1/2" x WOF strips for binding.

From 2383-90 Ladybugs – Gray:

*Cut five 3-1/2" x WOF strips. Sub-cut fifty-five 3-1/2" squares.

From 2378-90 Tossed Teapots & Teacups – Gray:

*Cut one 5" x WOF strip. Sub-cut four 5" squares.

*Cut five 3-1/2" x WOF strips for border 2.

From 3955 Eclipse – White:

*Cut eleven 2" x WOF strips. Sub-cut 220 2" squares.

*Cut three 5" x WOF strips. Sub-cut seventy-two 1-1/4" x 5" strips and ten 2" x 3-1/2" strips.

*Cut three 6-1/2" x WOF strips. Sub-cut seventy-two 1-1/4" x 6-1/2" strips.

*Cut five 1-1/2" x WOF strips for border 1.

Assemble Blocks

Note: Measurements include 1/4" seam allowances. Sew with right sides together unless otherwise stated. If no direction is specified, press the seam toward the darker fabric.

1. Sew a 1-1/4" x 5" 3955 Eclipse – White strip to opposite sides of all the 5" squares from 2379-99 Tossed Teacups – Black, 2384-90 Teaspoons – Gray, 2382-01 Teacup Stripe – White, 2380-99 Teabags – Black, 2385-88 Abstract Argyle – Red, 2381-01 Tossed Teapots – White, and 2378-90 Tossed Teapots & Teacups – Gray. Press the seams away from the center. Sew one 1-1/4" x 6-1/2" strip to the top and one to the bottom of all units to make thirty-six 6-1/2" assorted blocks (*figure 1*). Press as before.



Figure 1 – Make (36) 6-1/2" assorted blocks.

2. Draw a diagonal line on the wrong side of the 2" 3955 Eclipse – White squares. With right sides together, place one marked White square on a corner of one 3-1/2" 2383-90 Ladybugs – Gray square and stitch on the drawn line. Repeat with the opposite corner of the same square. Trim seam allowances to 1/4"

and press open. Repeat with the other square corners (figure 2). Make fifty-five 3-1/2" blocks.

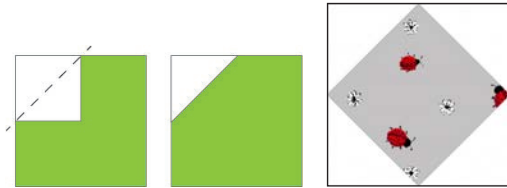


Figure 2 – Make (55) 3-1/2" blocks.

Assemble Quilt Top

3. Referring to the quilt photo for block placement, lay out the Step 1 blocks in six rows, and join the blocks together in each row. Press the seams in one direction.
4. To make the horizontal sashing rows, sew together eleven Step 2 blocks, beginning and ending with one 2" x 3-1/2" 3955 Eclipse – White strip. Press the seams open. Repeat to make a total of five sashing strips.
5. Matching adjacent seams, sew block rows and horizontal sashing strips together. Press the seams in one direction.
6. For border 1, join the five 1-1/2" 3955 Eclipse – White strips together end to end using diagonal seams. Measure the vertical length of the quilt top through the center and cut two border strips that length. Sew one strip to each side of the quilt top and

press the seams toward the border strips. Measure the width of the quilt top through the center. Cut two border strips that length and sew one to the top and one to the bottom. Press the seams toward the borders.

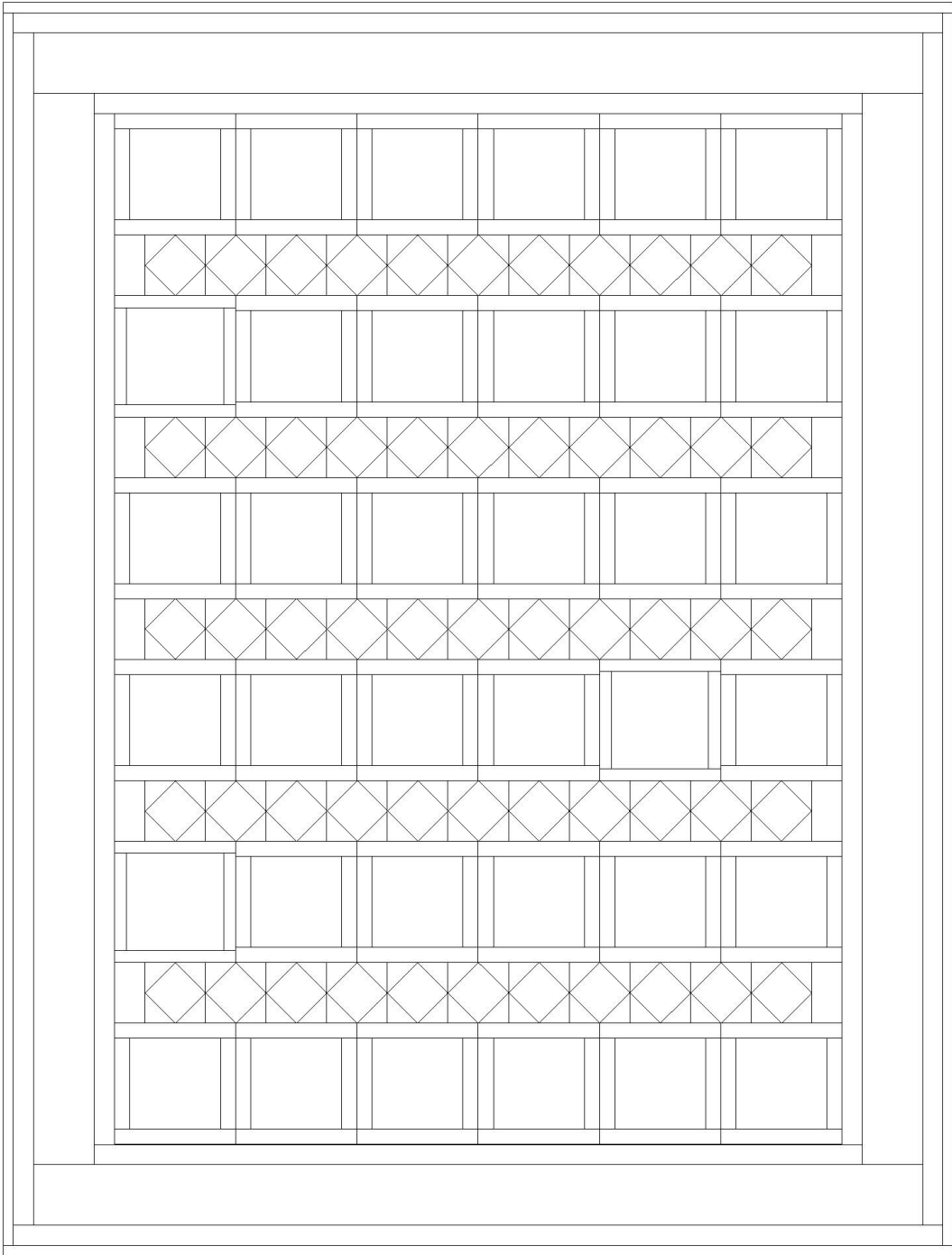
7. Repeat Step 6 with the five 3-1/2" 2378-90 Tossed Teapots & Teacups – Gray strips to make and add border 2.

8. Repeat Step 6 with the six 1-1/2" 3955 Eclipse – Red strips to make and add border 3.

Finishing

9. Create a sandwich with the batting between the quilt top and the backing. Pin or baste layers together, mark quilting design, and quilt by hand or machine. When quilting is complete, remove pins or basting, and trim batting and backing even with raw edges of the quilt top.
10. Join the six 2-1/2" 3955 Eclipse - Jet Black binding strips together end to end using a diagonal seam to make one long strip. Fold in half lengthwise and press. Sew binding to the edges of the quilt, mitering corners, and overlapping ends. Fold binding to the back of the quilt and stitch it in place by hand to finish.

Let's Partea - Quilt 1



Quilt Diagram